

Vancouver-UBC Local Committee

September 21st, 2021

Web Meeting via Zoom

For a better web meeting:

- We may have many people online, so please mute your phone or microphone when you are not speaking
- Ensure your name is displayed so that we know who you are
- We have a volunteer co host who will watch the text chat queue and help make sure people can ask questions
- Take advantage of the text chat function; ask questions, raise your hand to speak, or provide feedback on a topic. This gives us a text log for the preparation of our minutes. Test it out before 6:30 pm by letting us know you are online, just enter your first name. This will help us with the minutes.
- If you are not logged in to the Zoom meeting you won't see the presentation, but you can access it on our wiki, [here](#) and follow along.
- You can use computer audio (microphone and speaker), or dial in separately

Meeting Agenda

- Welcome, introductions, and announcements
- Updates from Working Group leads
- Consultations Update
- HUB Cycling RAC and Board Updates
- Other Business
- Meeting Adjourns
- Break Out Rooms (8:00 pm – 8:30 pm)
 - Cycling in Parks
 - General Topics

Welcome and Introductions

- Welcome to new attendees
- Anything to add to the agenda?
- Minutes from July (we had no meeting in August)

Announcements

- Van Connect – please report bike lane maintenance issues, particularly debris and flooding, as we enter the fall
- Go By Bike Week is Sept 27th to Oct 3 – register, log your trips, volunteer
- HUB Cycling webinar on [Cycle Superhighways](#) is Oct 24
- North Shore [Cargo Bike Festival](#) is Sept 26 including a guided ride (cargo bike not required, bring any bike that you use to move stuff)
- Washington State [Bike Walk and Roll Summit](#) is Sept 27 to Oct 1
- HUB Cycling adult [Streetwise](#) and youth [Learn2Ride](#) courses are online, and free for participants
- UBCM Motion for a Safe Passing Law has passed! Thanks to all those who supported our HUB Cycling campaign (1220 letters were sent from 42 municipalities)
- Two bike crashes reported on 10th in the construction zone (loose gravel)
- At the end of our regular meeting, at 8 pm, we intend to have several Zoom breakout rooms set up, for some of our working groups. Entrance will be direct from the main meeting, with no need to log in separately. This will be an opportunity for smaller group discussions. This is our first attempt at break out rooms online.
- Any other announcements?

Updates from Working Group Leads

- Assessment Rides – Jeff, Philippe. Kent Ave Bikeway report nearing completion. CVG ride held and draft report completed. Fall CoV budget plan for active transportation could be used to identify routes to assess.
- Cycling in Parks – Lisa - Kits Beach Park and Arbutus St. temporary lane; Stanley Park road reallocation; more Stanley Park details under Consultations.
- Arbutus Greenway – Stan – Broadway subway construction detour
- Cargo Bikes and Freight – Sam – North Shore Cargo Bike festival, micro logistics hub progress with the CoV
- Broadway Subway – Jeff – Detour implemented for the Arbutus Greenway from 10th to 7th for the next three years. Engagement with the Business Stakeholders Advisory Group
- East Van Greenway – Clark

Consultations – Stanley Park Temporary Protected Lane

- Phases 1 -3 implemented. Originally intended to be in place until October. Discuss.



Consultations – Kits Beach Park Seaside Greenway improvements

- Public engagement process
 - Values and Priorities – survey finished in August on how people use the park and paths
 - Cycle Path Route Options (October 2021)
 - Preferred Options (February 2022)
- Additional pavement added to the Yew path and on the desire line path west of the concession
 - We were advised this was not part of the planning process, but was done by Park Operations staff

Consultations – Richards St Bikeway

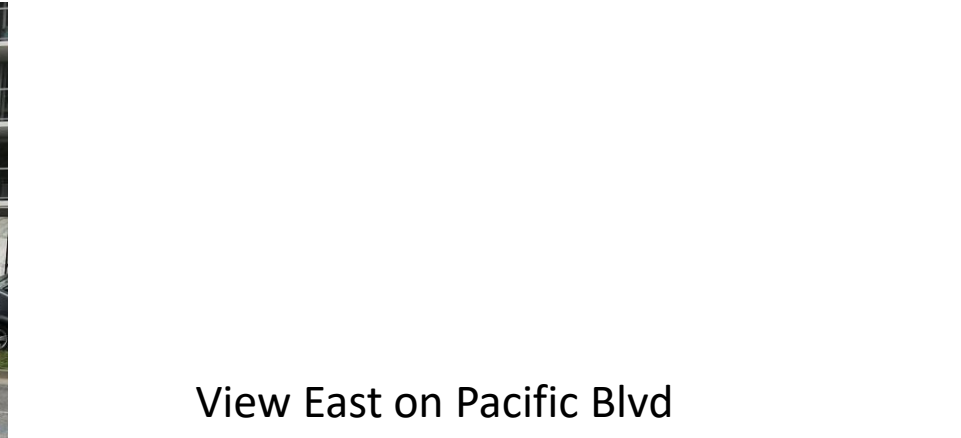


Grand Opening (Cordova to Smithe)
held Sept 8th with a HUB Cycling tent
and giveaways (merchant gift cards)

Consultations – Richards St Bikeway at Pacific Boulevard intersection



View North on Richards St



View East on Pacific Blvd



CITY OF VANCOUVER

Consultations - Ontario St. Bikeway improvements at 16th Ave



View North on Ontario St

Public Engagement Sessions (with this design) were held in the Fall of 2015

View South on Ontario St



Consultations – Haro St. Improvements 2021



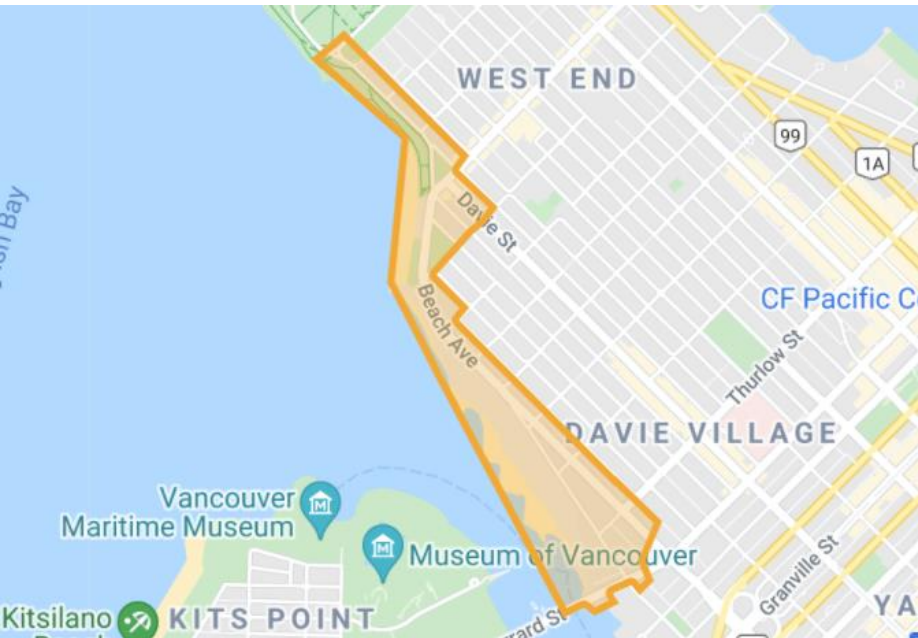
Haro and Bute Diversion

Haro St. Bikeway approved by Council - 2005
Signage and paint installed - 2012
Public Consultation on improvements - 2019

Haro and Cardero Diversion



Consultations – Imagine West End Waterfront Plan



- Community Advisory Group being formed (Fall 2021 – Spring 2023)
- Masterplan to address neighbourhood connectivity and access, seawall experience, park services, and more
- This planning process relates strongly to the Interim Beach Ave Bikeway recently implemented



Consultations – School Streets Pilot

- Three schools are participating now in the [School Streets Program](#): Lord Roberts, Van Horne, and Hastings
- Additional schools are being added
- The CoV is supporting volunteer recruitment, working with [Dash](#)
- Opportunities to volunteer for one or two shifts per week (morning or afternoon)
- We continue to encourage the CoV to implement safer infrastructure to allow for safer and more comfortable trips to schools without requiring parent and community volunteers to attend the School Streets twice each day

Consultations – Other

- Smithe St Bikeway construction pending
- Broadway Subway Construction Business Awareness campaign
- Parking Program (Climate Emergency Response)
- Translink Major Bikeway Network and Metro Vancouver Greenways updates
- UBC Engineering Students 1st Year Projects this year will focus on Vancouver cycling lanes and decision making (5 routes were suggested for students to select from)
- Jericho Lands Planning Process – worth following the progress as this will be a major development

HUB RAC and Board Updates

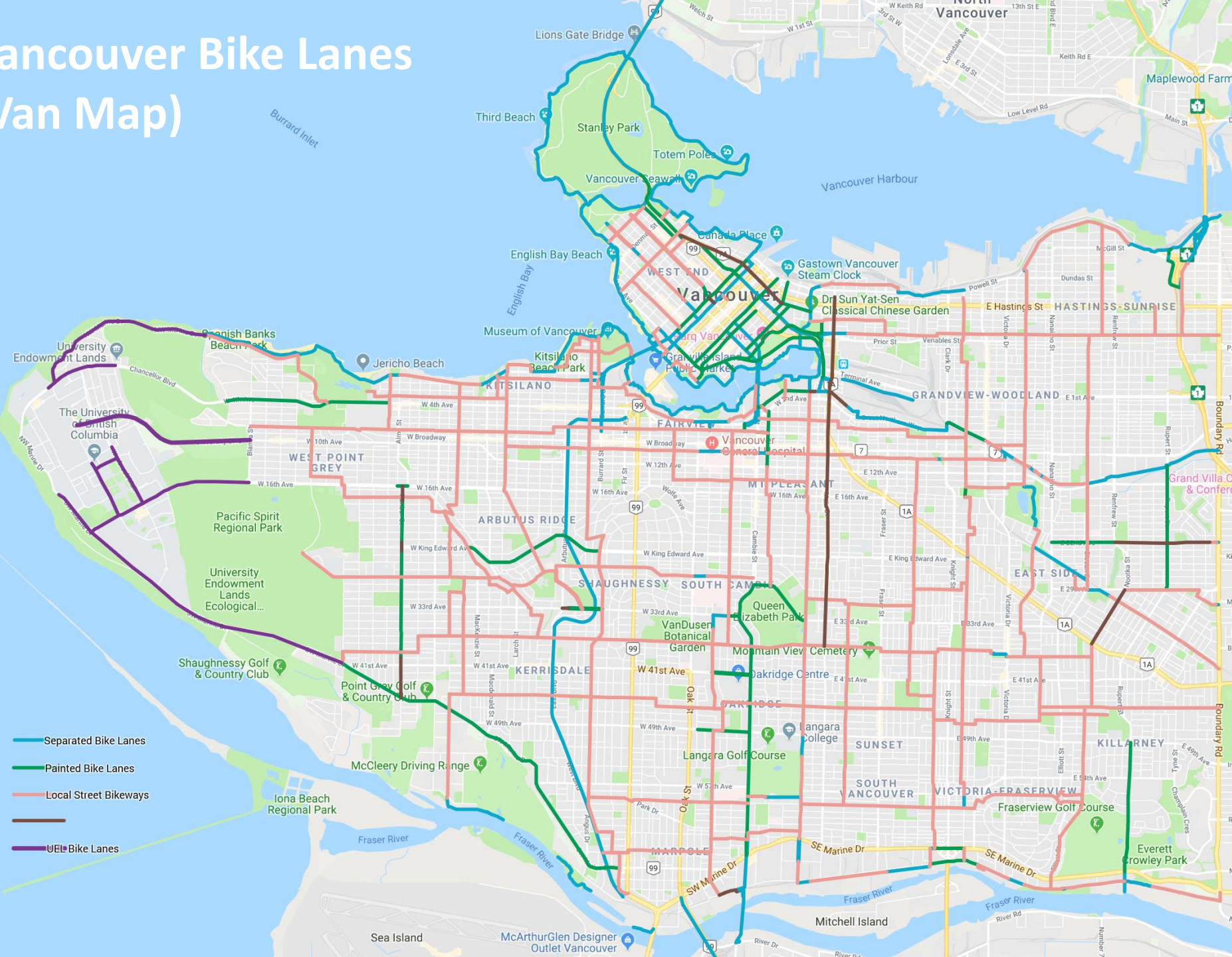
- Regional Advisory Committee (RAC)
 - Hwy 7 upgrades east from Maple Ridge
 - George Massey Crossing and corridor improvements
 - Communications with Ministers regarding the MoTI Cycling Policy and the application of it to MOTI projects
- HUB Cycling Board of Directors
 - Our AGM was held Sept 16th; 5 new directors were elected
 - Our AGM vote on the proposed new HUB membership model passed, which allows us to introduce Lifetime Memberships

Breakout Rooms

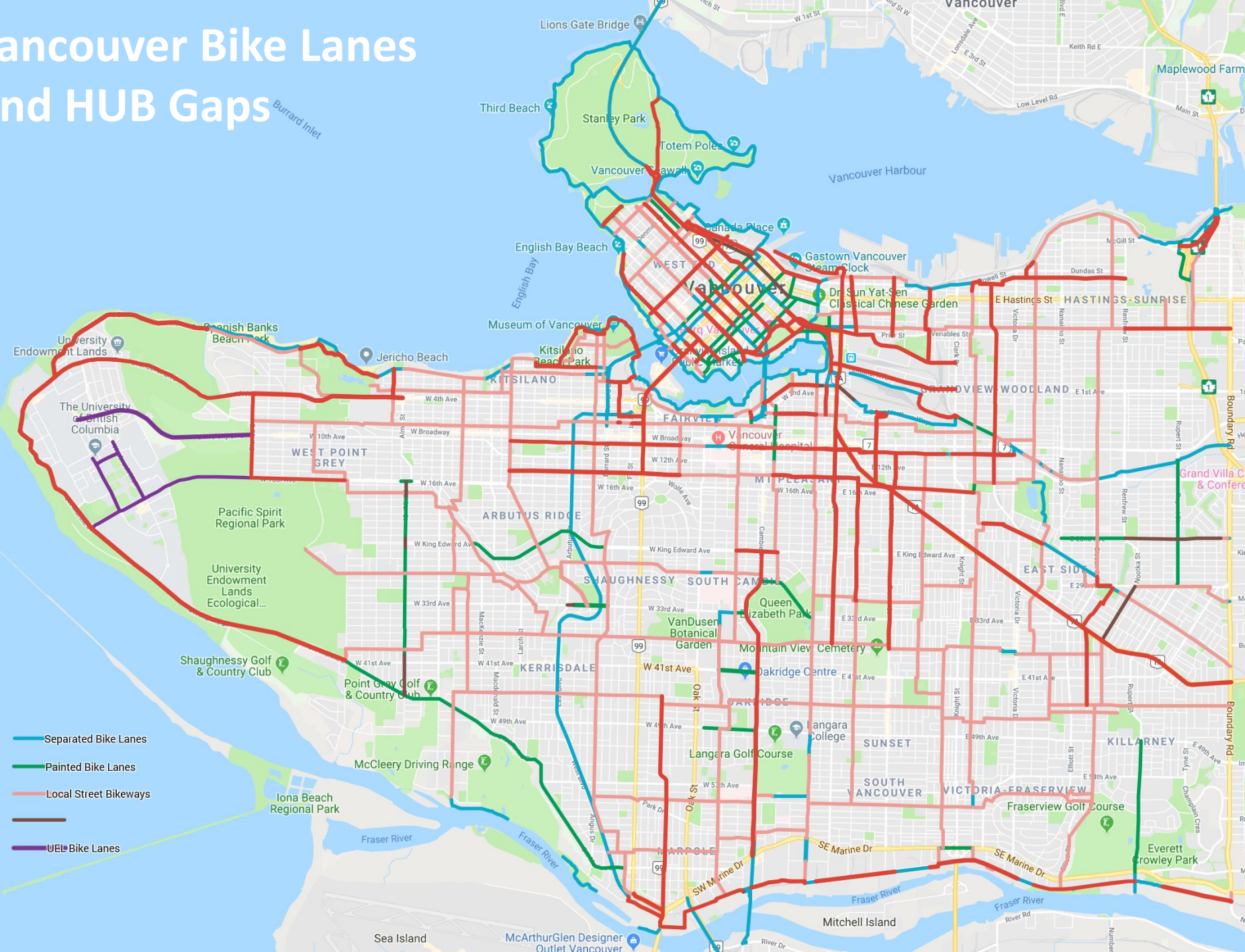
- We have set up several Breakout Rooms so that our working groups can continue with smaller group discussions.
- Each will have a moderator/leader. The rooms will be open for 30 minutes.
- Please select which one you would like to go to
 - Cycling in Parks (Lisa/Anthony)
 - General Discussion (Jeff)

Appendices

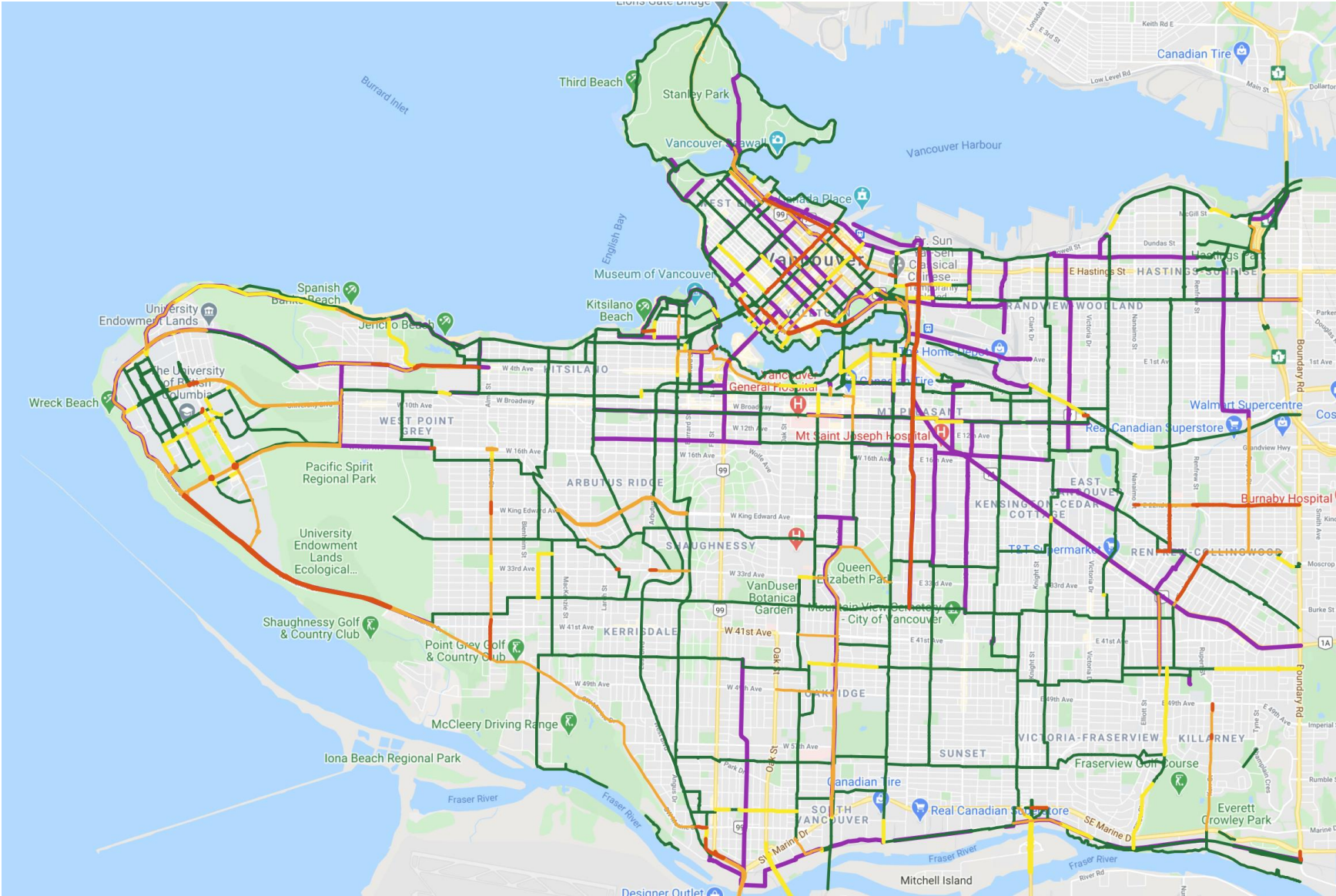
Vancouver Bike Lanes (Van Map)



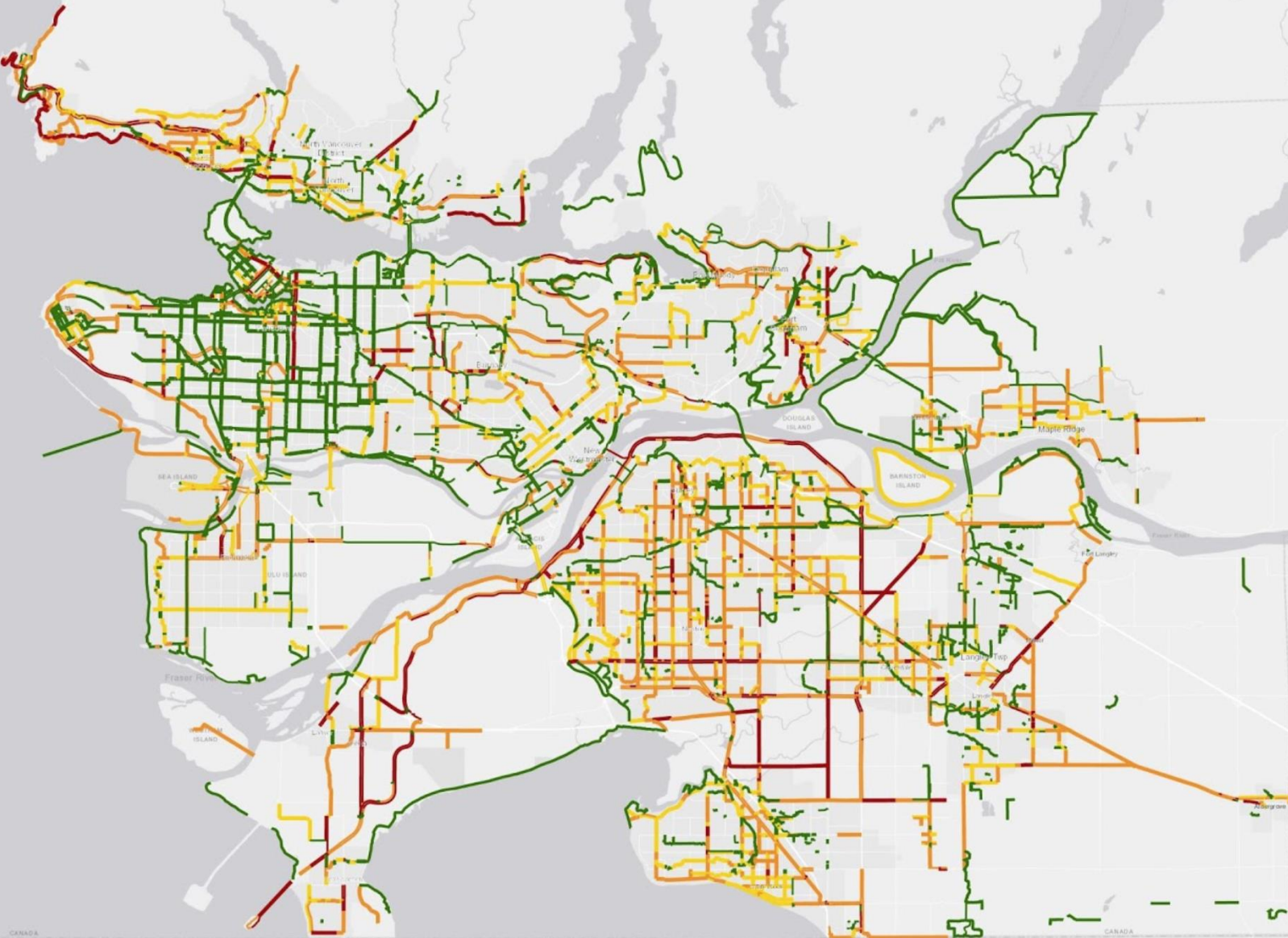
Vancouver Bike Lanes And HUB Gaps



Prototype Gap Maps with SoC Route Data



Regional Bikeway Map



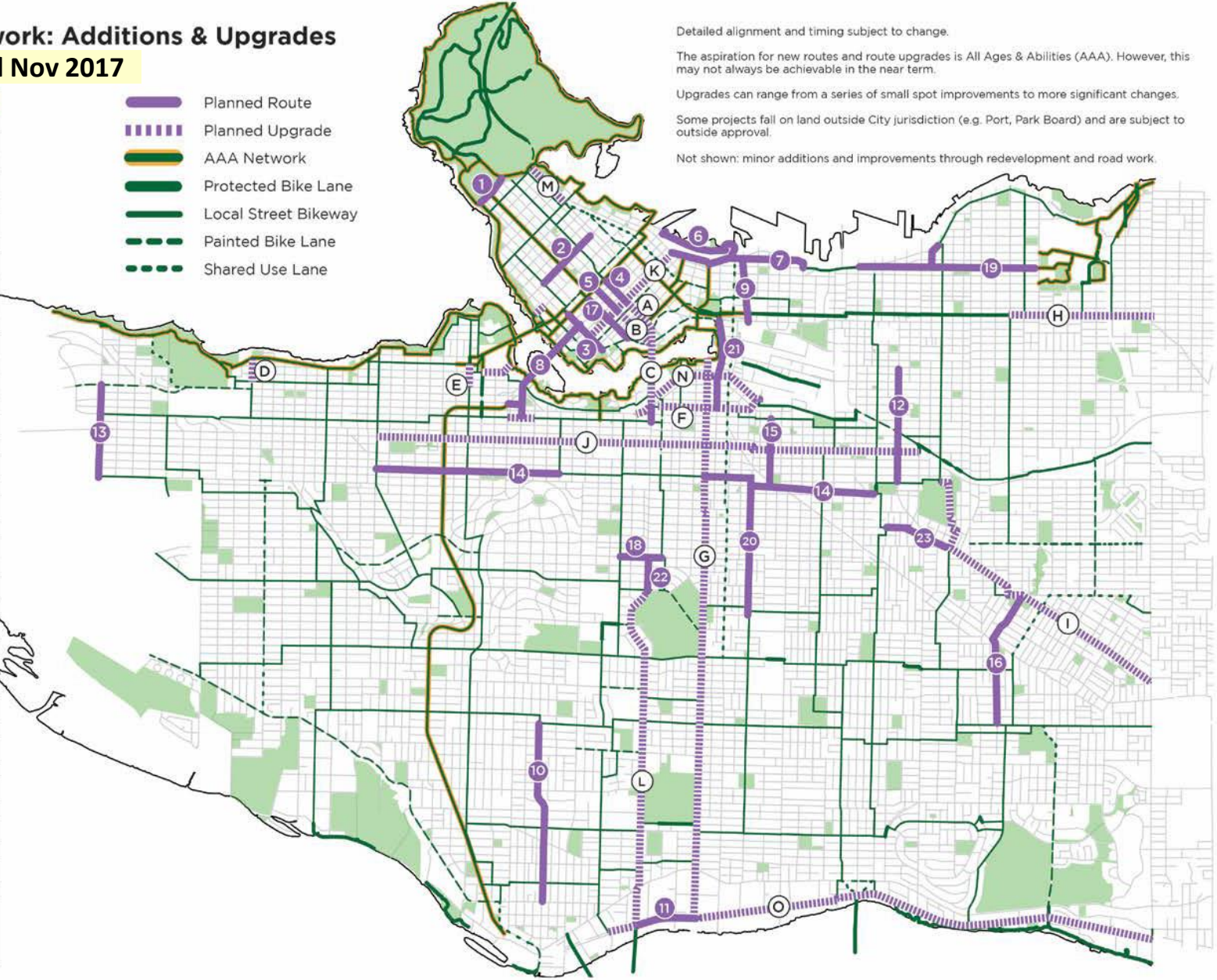
5-Year Cycling Network: Additions & Upgrades 2018-2022

Added Nov 2017

Detailed alignment and timing subject to change.
 The aspiration for new routes and route upgrades is All Ages & Abilities (AAA). However, this may not always be achievable in the near term.
 Upgrades can range from a series of small spot improvements to more significant changes.
 Some projects fall on land outside City jurisdiction (e.g. Port, Park Board) and are subject to outside approval.
 Not shown: minor additions and improvements through redevelopment and road work.

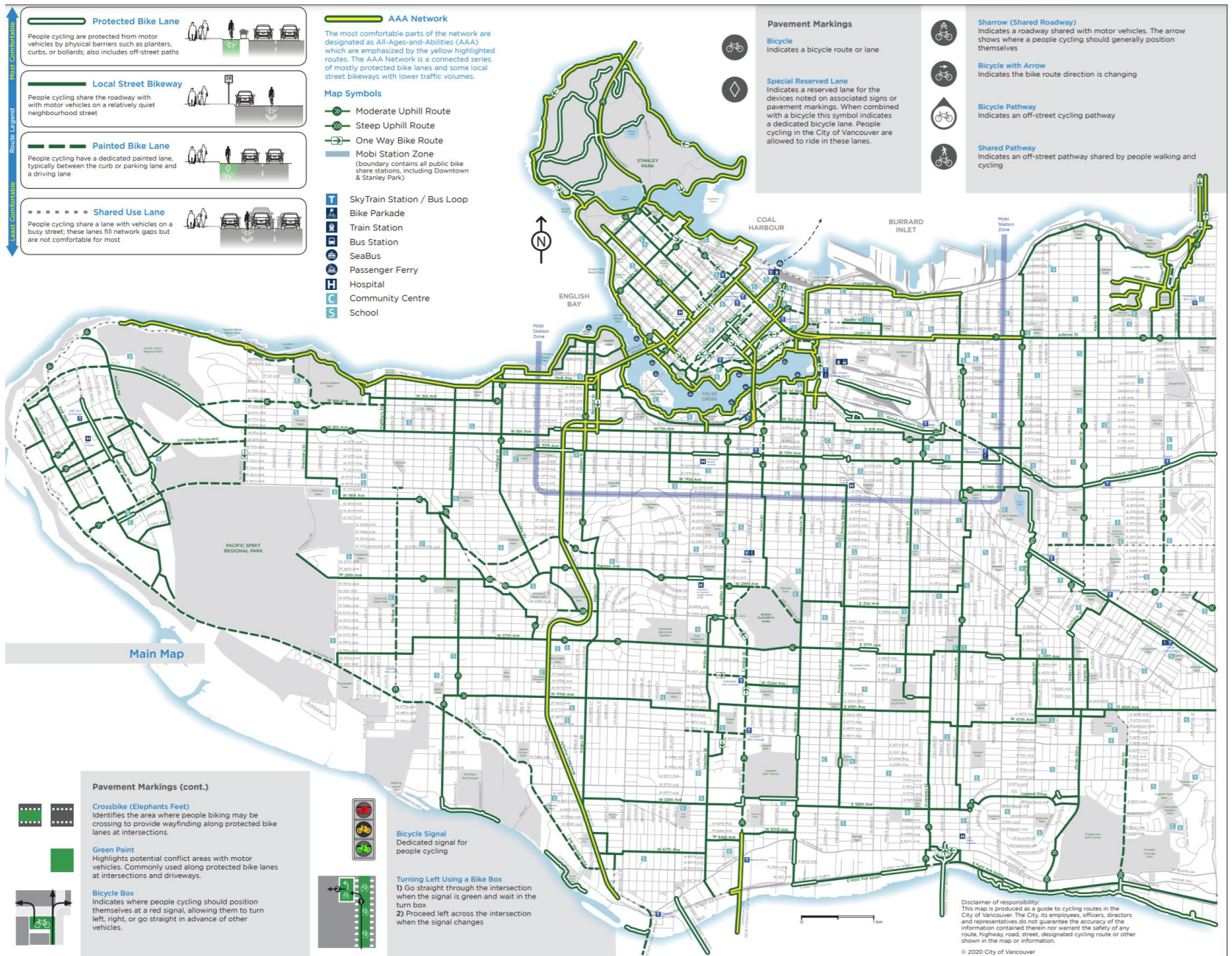
Planned Routes	
1	Park Lane*
2	Bute
3	Drake
4	Smithe
5	Nelson
6	West Waterfront Road**
7	Water-Alexander-Powell
8	Granville Bridge
9	Gore
10	Hudson
11	Kent
12	Commercial
13	Blanca
14	14th Ave
15	St. George Rainway
16	Duchess-Wales*
17	Helmcken
18	King Edward
19	Pandora-Semlin
20	Prince Edward
21	Quebec
22	Cambie
23	Stainsbury
Planned Upgrades	
A	Smithe
B	Nelson
C	Cambie Bridge
D	Highbury
E	Cypress
F	5th Ave
G	Ontario
H	Adanac
I	BC Parkway
J	10th Ave
K	Richards
L	Cambie
M	Georgia
N	1st Ave
O	Kent

- Planned Route
- Planned Upgrade
- AAA Network
- Protected Bike Lane
- Local Street Bikeway
- Painted Bike Lane
- Shared Use Lane



* Park Board jurisdiction
 ** Port Authority jurisdiction
 Number/Letter sequence does not imply priority

CoV Cycling Map – Fall 2020 Update



Protected Bike Lane
People cycling are protected from motor vehicles by physical barriers such as planters, curbs, or bollards; also includes off-street paths

Local Street Bikeway
People cycling share the roadway with motor vehicles on a relatively quiet neighbourhood street

Painted Bike Lane
People cycling have a dedicated painted lane, typically between the curb or parking lane and a driving lane

Shared Use Lane
People cycling share a lane with vehicles on a busy street; these lanes fill network gaps but are not comfortable for most

AAA Network
The most comfortable parts of the network are designated as All-Ages-and-Abilities (AAA) which are emphasized by the yellow highlighted routes. The AAA Network is a connected series of mostly protected bike lanes and some local street bikeways with lower traffic volumes.

- Map Symbols**
- Moderate Uphill Route
 - Steep Uphill Route
 - One Way Bike Route
 - Mobi Station Zone (boundary contains all public bike share stations, including Downtown & Stanley Park)

- SkyTrain Station / Bus Loop
- Bike Parkade
- Train Station
- Bus Station
- SeaBus
- Passenger Ferry
- Hospital
- Community Centre
- School

- Pavement Markings**
- Bicycle**
Indicates a bicycle route or lane
 - Special Reserved Lane**
Indicates a reserved lane for the devices noted on associated signs or pavement markings. When combined with a bicycle this symbol indicates a dedicated bicycle lane. People cycling in the City of Vancouver are allowed to ride in these lanes.

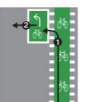
- Sharrow (Shared Roadway)**
Indicates a roadway shared with motor vehicles. The arrow shows where a people cycling should generally position themselves
- Bicycle with Arrow**
Indicates the bike route direction is changing
- Bicycle Pathway**
Indicates an off-street cycling pathway
- Shared Pathway**
Indicates an off-street pathway shared by people walking and cycling

Pavement Markings (cont.)

- Crossbike (Elephants Feet)**
Identifies the area where people biking may be crossing to provide wayfinding along protected bike lanes at intersections.
- Green Paint**
Highlights potential conflict areas with motor vehicles. Commonly used along protected bike lanes at intersections and driveways.
- Bicycle Box**
Indicates where people cycling should position themselves at a red signal, allowing them to turn left, right, or go straight in advance of other vehicles.



Bicycle Signal
Dedicated signal for people cycling

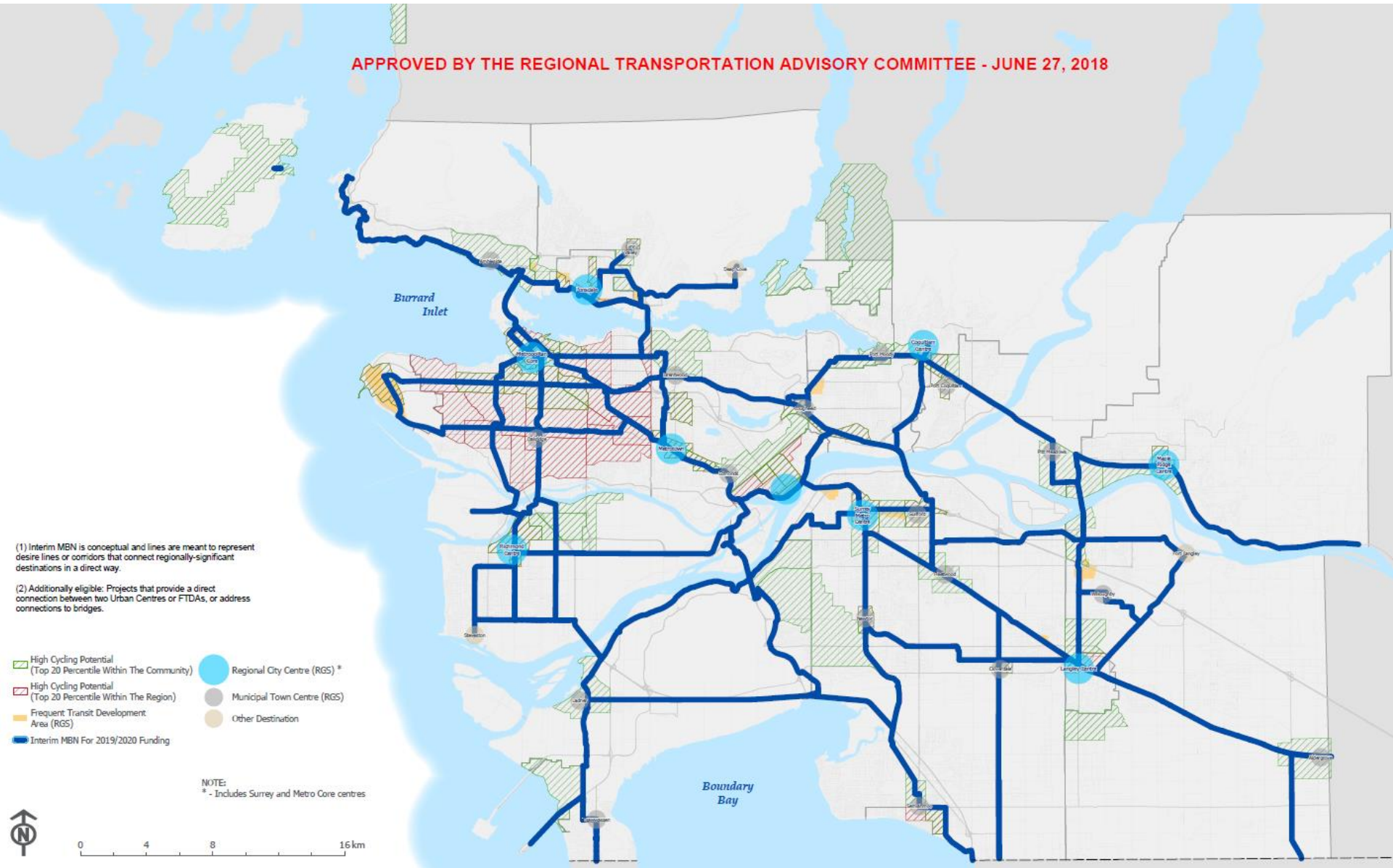


Turning Left Using a Bike Box
1) Go straight through the intersection when the signal is green and wait in the turn box
2) Proceed left across the intersection when the signal changes

Disclaimer of responsibility:
This map is produced as a guide to cycling routes in the City of Vancouver. The City, its employees, officers, directors and representatives do not guarantee the accuracy of any route, highway, road, street, designated cycling route or other shown in the map or information.
© 2020 City of Vancouver

Translink Major Bikeway Network (MBN)

APPROVED BY THE REGIONAL TRANSPORTATION ADVISORY COMMITTEE - JUNE 27, 2018



Metro Vancouver Greenway Plan

