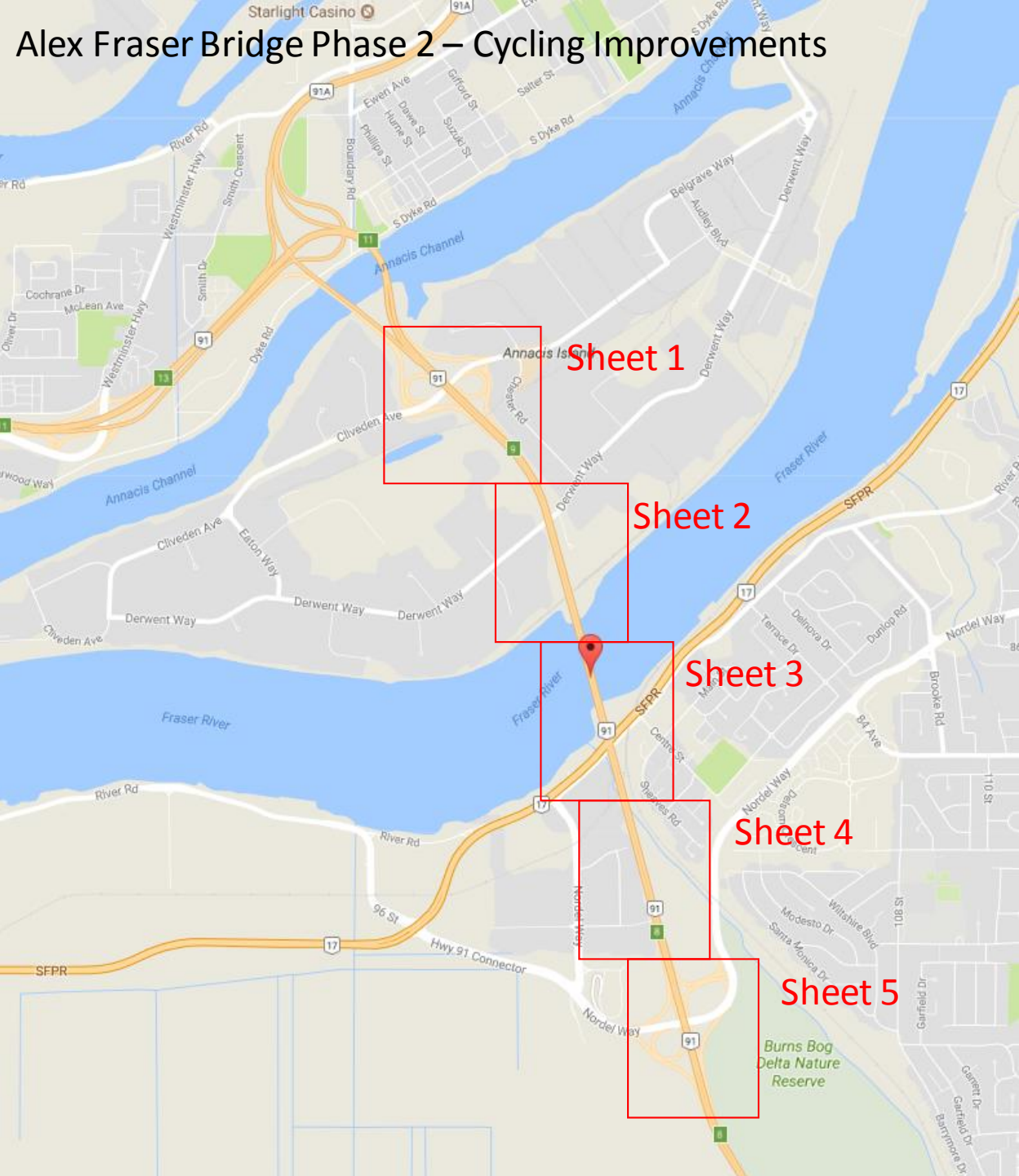


Alex Fraser Bridge Phase 2 – Cycling Improvements



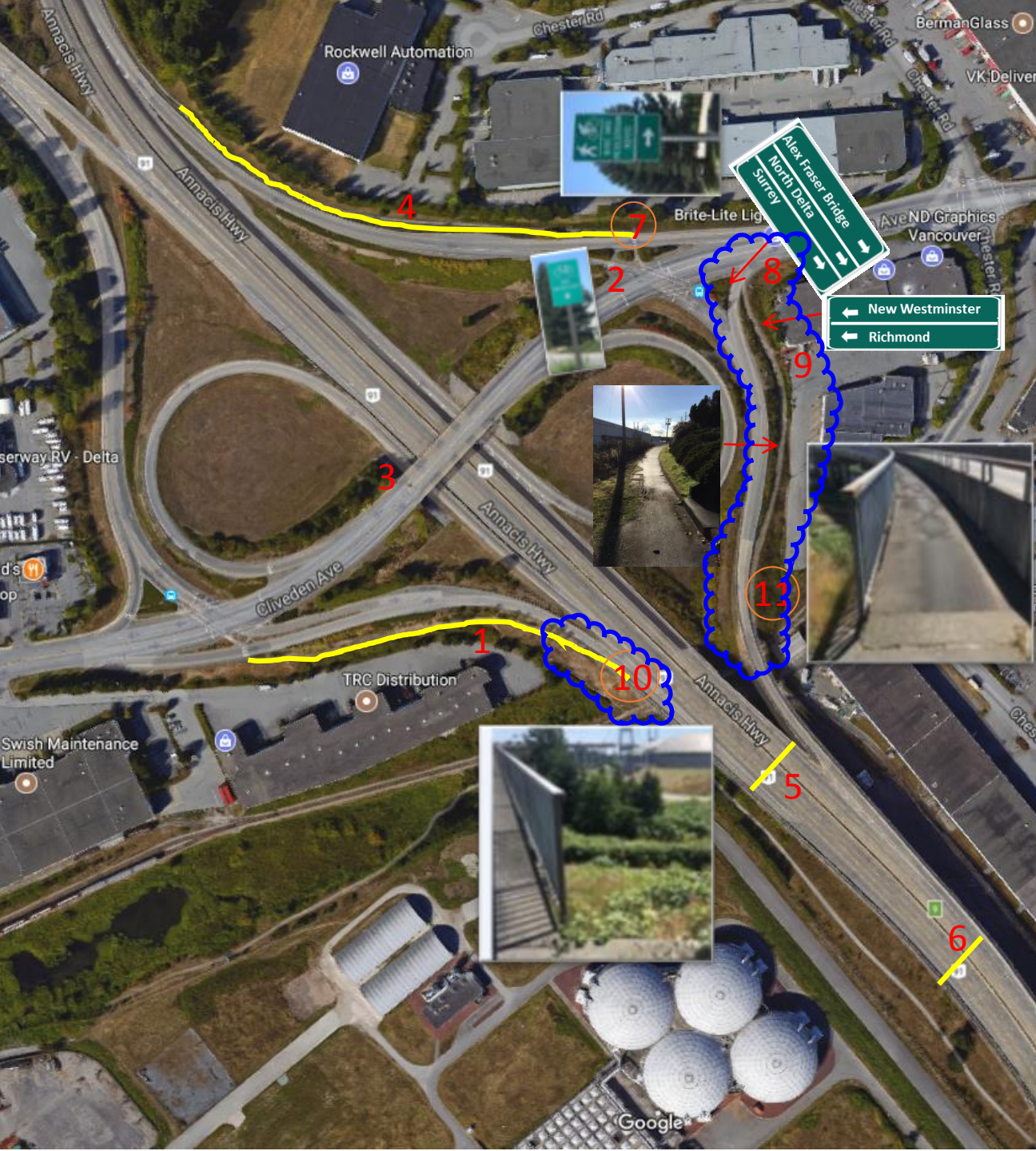
Sheet 1

Sheet 2

Sheet 3

Sheet 4

Sheet 5



1. ~~Widen Path, remove sloughing & Drainage Problems, reduce grade to 5%~~
2. Crossing at Cliveden should be upgraded. Sign pointing in the wrong direction. Adjust sign to have arrow pointing straight towards crosswalk on north side.
3. Upgrade signing and access through Cliveden intersection
4. ~~Fix sloughing, widen path~~
5. New guide sign at N20. Widen sidewalk locally on West side only
6. New guide sign at N15. Widen sidewalk locally, both sides.
7. Sign pointing in the wrong direction. Change tab to have arrow pointing left and not right as shown here. (Currently points towards a parking lot)
8. Install sign as shown to direct cyclist traffic to bridge.
9. Install sign as shown to direct cyclist traffic towards New Westminster and Richmond.
10. Install Zw-054R on beginning of fencing. **Flare Hand Rail**
11. Install Zw-054L on beginning of fencing. **Fix trail. Flare Hand Rail**



12. Existing guide sign at Nxxx.
Widen sidewalk locally

13. Install Zw-054L on first bridge
pillar in SB direction.

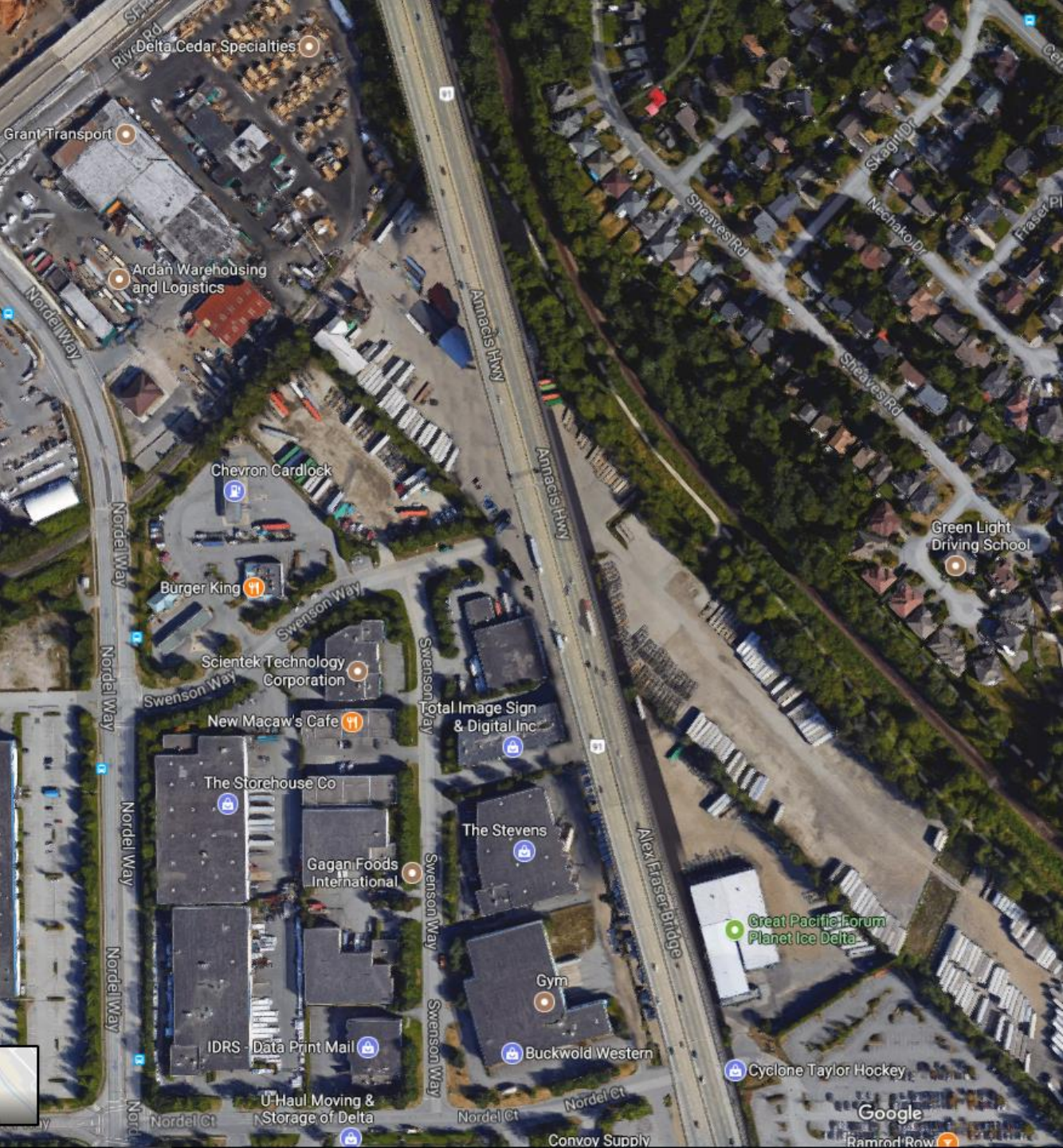
14. Install Zw-054R on first bridge
pillar in SB direction.



15. Existing guide sign at Nxxx.
Widen sidewalk locally

16. Install Zw-054R on first
bridge pillar in NB direction.

17. Install Zw-054L on first
bridge pillar in NB direction.



Delta Cedar Specialties

Grant Transport

Ardan Warehousing and Logistics

Chevron Cardlock

Burger King

Sciencet Technology Corporation

New Maçaw's Cafe

The Storehouse Co

Gagan Foods International

IDRS - Data Print Mail

U-Haul Moving & Storage of Delta

Annacis Hwy

Annacis Hwy

Alex Fraser Bridge

Total Image Sign & Digital Inc

The Stevens

Gym

Buckwold Western

Great Pacific Forum Planet Ice Delta

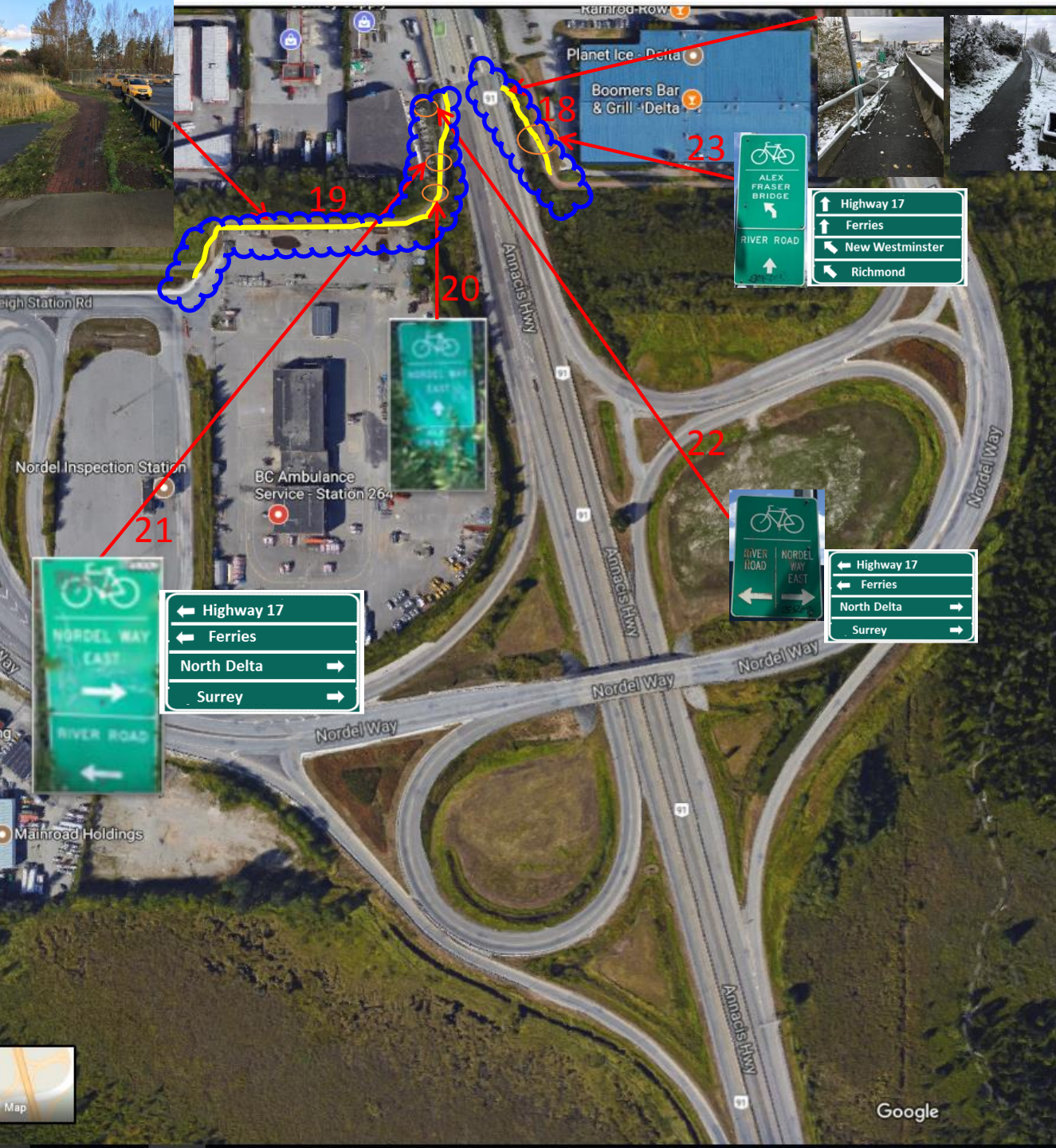
Cyclone Taylor Hockey

Green Light Driving School

Google

Ramrod Row

Convoy Supply



~~18. Improve Access, Widen Path, Repave, lower grade.~~

Retaining wall , relocate lamp standard, shrub trimming, flare/widen switchback

19. Improve Access, Widen Path, Repave, lower grade (replace bricks with paved path). Retaining wall, flare/widen switchback

20. Keep existing sign and cut shrubbery so that sign is not obstructed.

21. Keep existing sign (Nordel way east/river road) and install new guide sign (highway 17, ferries, etc.).

22. Keep existing sign (Nordel way east/river road) and install new guide sign (highway 17, ferries, etc.).

23. Keep existing sign (Alex Fraser Bridge/River Road) and install new guide sign (highway 17, ferries, etc.).