

Vancouver-UBC Local Committee

June 21, 2022

Web Meeting via Zoom

For a better web meeting:

- We may have many people online, so please mute your phone or microphone when you are not speaking
- Ensure your name is displayed so that we know who you are
- We have a volunteer co host who will watch the text chat queue and help make sure people can ask questions
- Take advantage of the text chat function; ask questions, raise your hand to speak, or provide feedback on a topic. This gives us a text log for the preparation of our minutes. Test it out before 6:30 pm by letting us know you are online, just enter your first name. This will help us with the minutes.
- If you are not logged in to the Zoom meeting you won't see the presentation, but you can access it on our wiki, [here](#) and follow along.
- You can use computer audio (microphone and speaker), or dial in separately

Meeting Agenda

- Welcome, introductions, and announcements
- Updates from Working Group leads
- Consultations Update
- Regional Advisory Committee (RAC) update
- HUB Board of Directors update
- Other Business
- Meeting Adjourns (8:00 pm)
- Break Out Rooms (8:00 pm – 8:30 pm)

Welcome and Introductions

- Welcome to new attendees
- Anything to add to the agenda?
- Minutes from May

Announcements

- Van Connect – please report bike lane maintenance issues to the City
- Concord Cycling Festival is on June 30th, 4-9 pm. We are planning to have a HUB cycling tent and table and need volunteers
- HUB All Committee Workshop planned for July 6th 6-8 pm. Emerging paradigms in roadway and bikeway design, including road space reallocation (A follow up to our NACTO training)
- [A journal article](#) was published on Case Studies on Sustainable Transportation Initiatives from the Pandemic. Vancouver is profiled.
- [Velpalooza](#), a festival of all things cycling, will run all July.
- At the end of our regular meeting, at 8 pm, we will have several Zoom breakout rooms set up, for some of our working groups (Parks, General Discussion)
- Any other announcements?

Updates from Working Group Leads

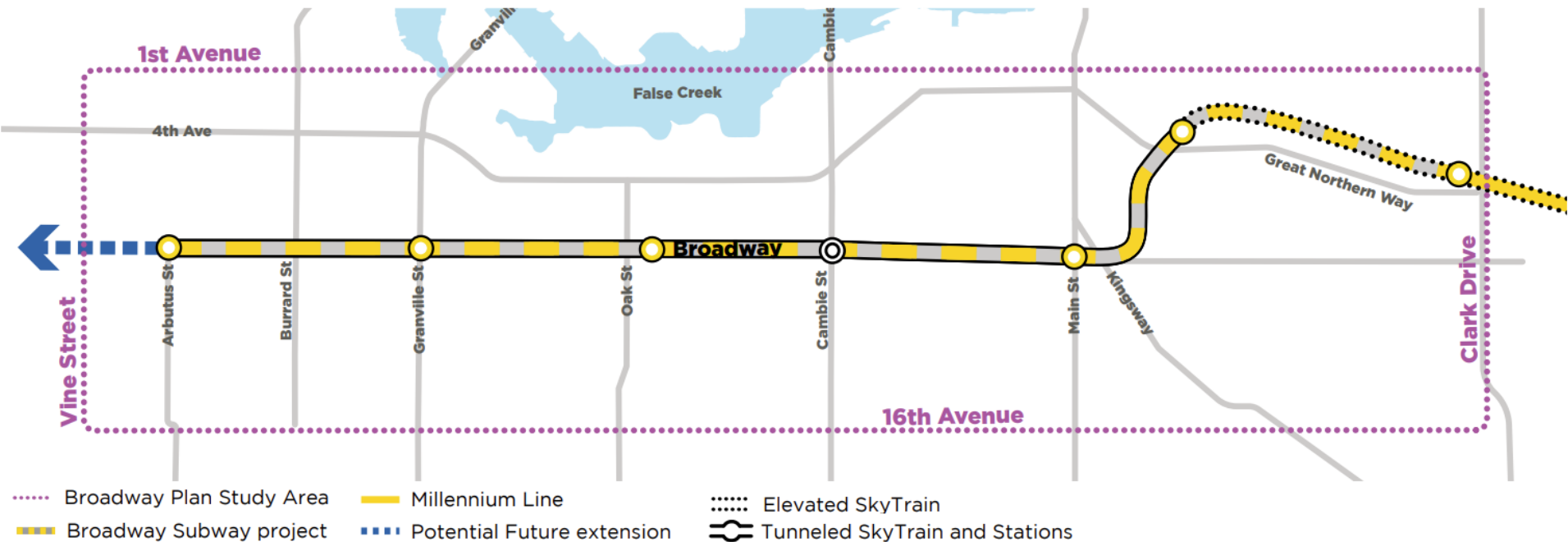
- Assessment Rides – Jeff, Anthony, Philippe – Richard St/Smithe St report underway. SW Marine report underway. Future assessment rides?
- Cycling in Parks – Lisa - Stanley Park Mobility Study, listening sessions announced, register to attend.
- Arbutus Greenway – Stan – Update
- Broadway Subway – Jeff, Anthony – Engagement with the Business Stakeholders Advisory Group, and Broadway Subway Project Traffic Advisory Group
- East Van Greenway – Clark – update
- Vancouver Municipal Election – Lisa – preparing for the 2022 election

Consultations – Stanley Park

- Mobility Study underway by staff to explore reducing vehicle traffic volumes in the park.
- Listening Session announced for June 27th
- Potential for a decision and vote by commissioners before the election this fall

Consultations – The Broadway Plan

- Scope: The Broadway Corridor, from Clark Drive to Vine St, between 1st Ave and 16th Ave



Consultations – The Broadway Plan

- Councillors are continuing their deliberations over the plan. There have been many presentations to Council, and letters received.
- An amendment by Councillor Boyle passed:
 - THAT Council commit to a future for the street of Broadway that increases safety and livability for families, seniors, and people with disabilities and decreases carbon emissions. And do so by ~~directing staff to implement a car-lite Broadway,~~ reallocating surface road space to prioritize pedestrians, buses, access for people with disabilities, safe active transportation and micro-mobility, emergency vehicles, public space, and the movement of goods. And deprioritizing personal private vehicles.
 - FURTHER THAT Council commit to building a AAA safe active transportation lane along Broadway.
 - FURTHER THAT Council direct staff to review, analyze and report back on recommended designs and funding sources for meeting the above goals.

Consultations – The Broadway Plan

- Memo from staff to councillors:
 - “Protected lanes on Broadway would help more directly serve cycling and micro-mobility access to businesses and other designations along Broadway”
 - Implementing bike lanes with the subway opening could cost \$20 – \$80 m. Staff later clarified that the street improvements could cost up to \$63 m without bike lanes. At the low end it would be interim, at the high end it would be a full street reconstruction. A mix is possible, and estimates will be refined through the design process.
 - Bike lanes could be accommodated by reallocating the curb lanes to protected bike lanes instead of wider sidewalks or reducing vehicle lanes to one in each direction (it is expected that this option would create significant congestion). Staff provided alternative design options with cross sections.

Consultations – The Broadway Plan

- Our advocacy campaign included:
 - Establishment of the project guiding principles, in 2016, which included references to active transportation infrastructure, and which were adopted by Council
 - Many meetings with the staff project team, over multiple years (with little success)
 - Meetings with business improvement associations, as part of the CoV stakeholder meetings
 - Meetings with elected officials
 - Work with Councillor Boyle, including input to her draft amendment, coming out publicly in support of it, and tracking both support and lack of support
 - Many media interviews (print, radio, tv)
 - Encouraging our supporters to send letters and emails to councillors

Consultations – The Vancouver Plan

- A long-term strategy for growth through 2050, expected to come to Council in July
- Includes references to Active Transportation:
 - Vision is for a transportation system that connects people to jobs and daily needs in an equitable way, prioritizing low-cost, healthy ways of getting around
 - Includes discussion of more greenways
 - Enable safe and comfortable walking, biking, and transit through land use and urban design
 - Create People First streets. Design retail streets as complete streets, prioritizing safe and comfortable walking, rolling, biking and transit access.
 - Move towards car free corridors and a network of car free retail streets in the city centre
 - Prioritize walking biking, transit and public space on streets over parking






Consultations – HUB RAC

BC Parkway Improvements

- Engagement with Translink on their plans to twin the BC Parkway in New Westminster and Burnaby, from the 22nd St station to Patterson St.
- Separate walking and cycling paths, intersection improvements, attention to sightlines, wayfinding signage. Future improvements planned in Vancouver, and Surrey
- Discussions are underway on the Surrey Langley Skytrain Project guideway
- This project overlaps with HUB Cycling's promotion of Cycle Highways

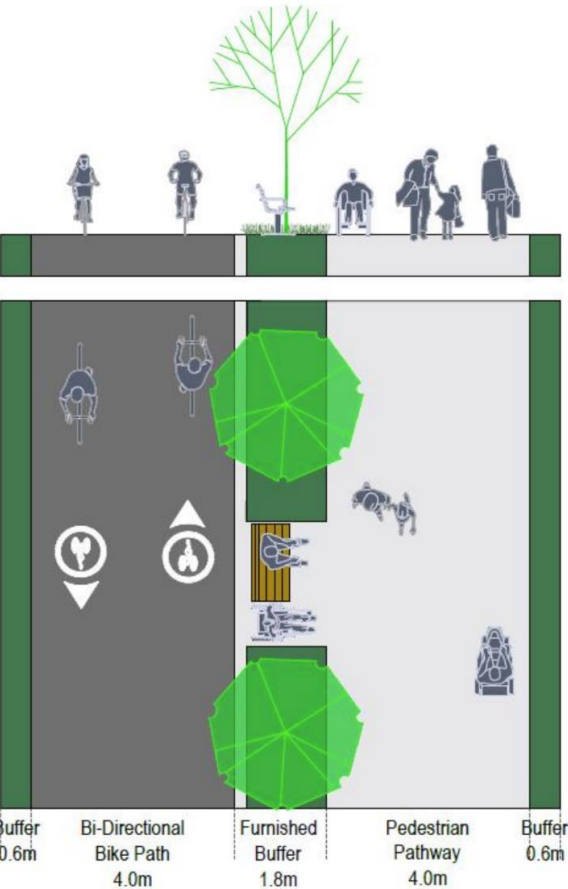
PROJECT BACKGROUND & OBJECTIVES

- 26km pathway
- Multi-modal
- Predominantly a multi-use pathway
- Located through various land use contexts

-  Urban
-  Residential
-  Industrial
-  Open Space
-  SkyTrain Station



PREFERRED CONDITIONS



Consultations – HUB RAC

Iona Island Roadway Improvements

- Metro Vancouver is planning significant work at the Iona Island Wastewater Treatment Plant.
- The plan is to improve road access along Ferguson Road and the Iona Causeway, with accompanying walking and cycling access improvements through to the Iona Beach Regional Park.
- Construction traffic will be increased until 2035
- One important consideration is that the route is currently used by two distinct groups of people cycling; recreational users, and sport/training riders

Consultations – HUB RAC

Iona Island Roadway Improvements

ACCESS TO IONA ISLAND

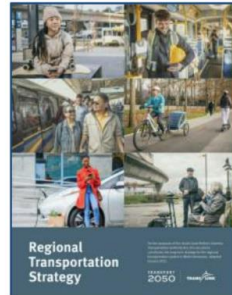
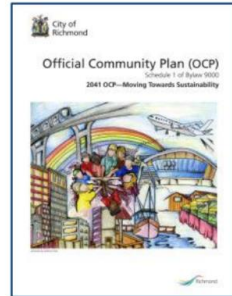
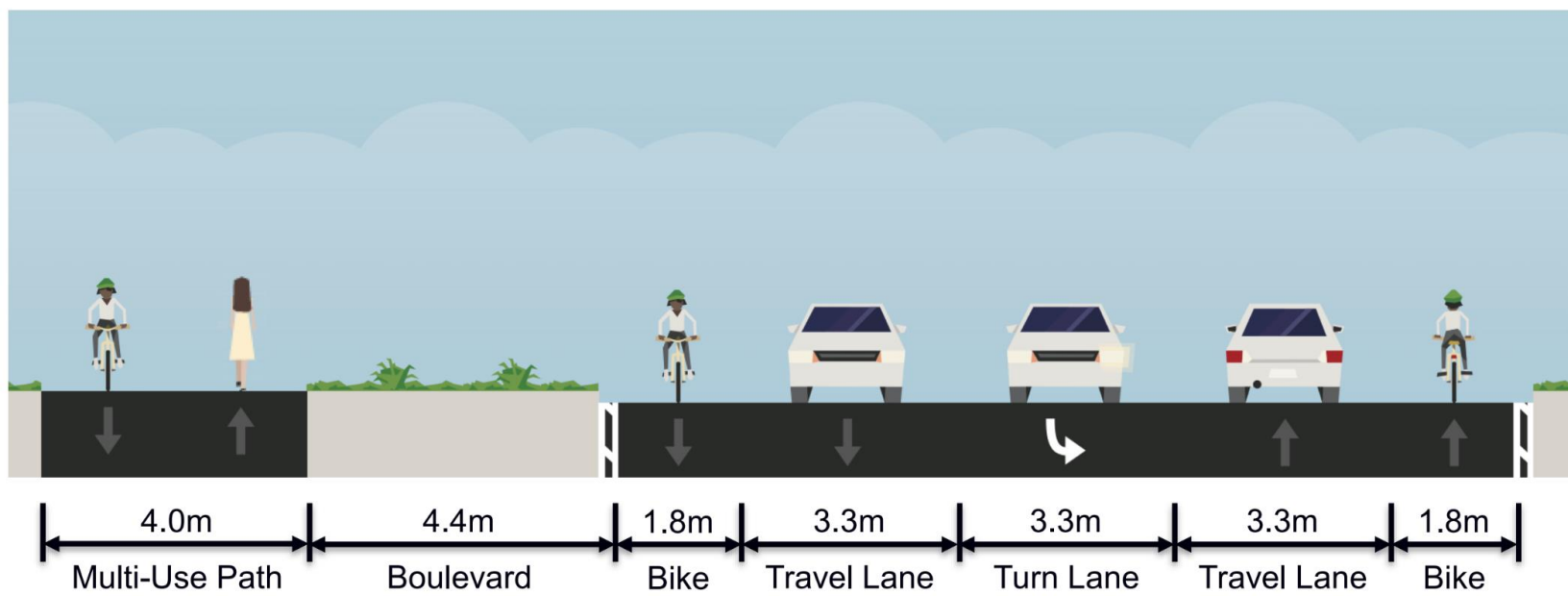
Ferguson Road



Consultations – HUB RAC

Iona Island Roadway Improvements

PROPOSED FERGUSON ROAD IMPROVEMENTS



Consultations – HUB RAC

Other Initiatives

- Participation in a UBC Study on the use of cycling facilities by those with mobility challenges
- BC Sustainable Freight Roundtable formed
- Participation in a study by Metro Vancouver on e-commerce impacts and last km delivery by sustainable modes (eg electric cargo bikes)
- Discussions with MoTI on Hwy 1 widening from 264th through to Whatcom Road, and active transportation considerations on this route

HUB Board Update

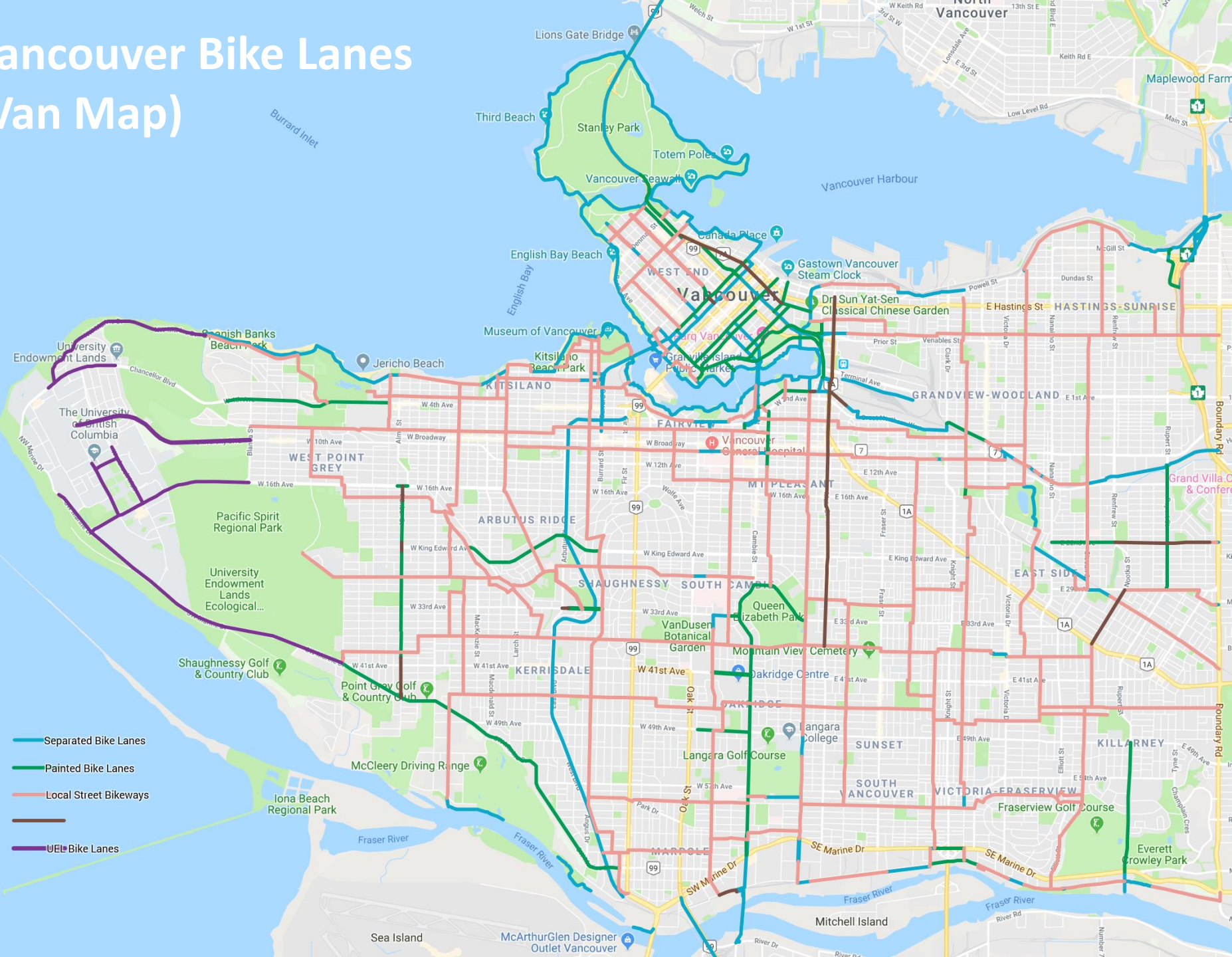
- The HUB Cycling AGM is planned for Sept 29th. Voting for Directors and President is open to all HUB members, and will run the week prior to the AGM, online. Registration is required.

Breakout Rooms

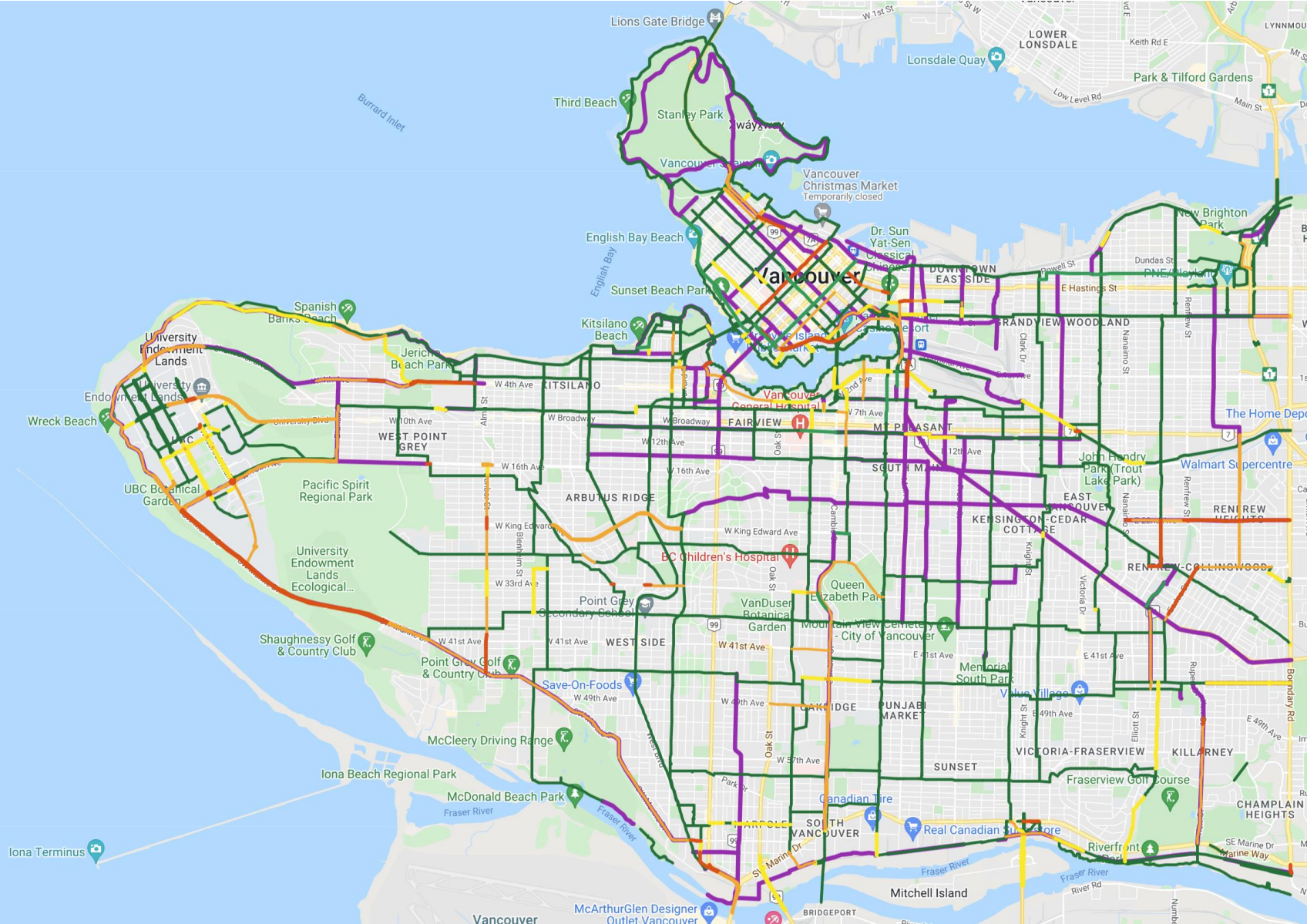
- We have set up several Breakout Rooms so that our working groups can continue with smaller group discussions.
- Each will have a moderator/leader. The rooms will be open for 30 minutes.
- Please select which one you would like to go to
 - Cycling in Parks (Lisa)
 - General Discussion (Jeff)

Appendices

Vancouver Bike Lanes (Van Map)

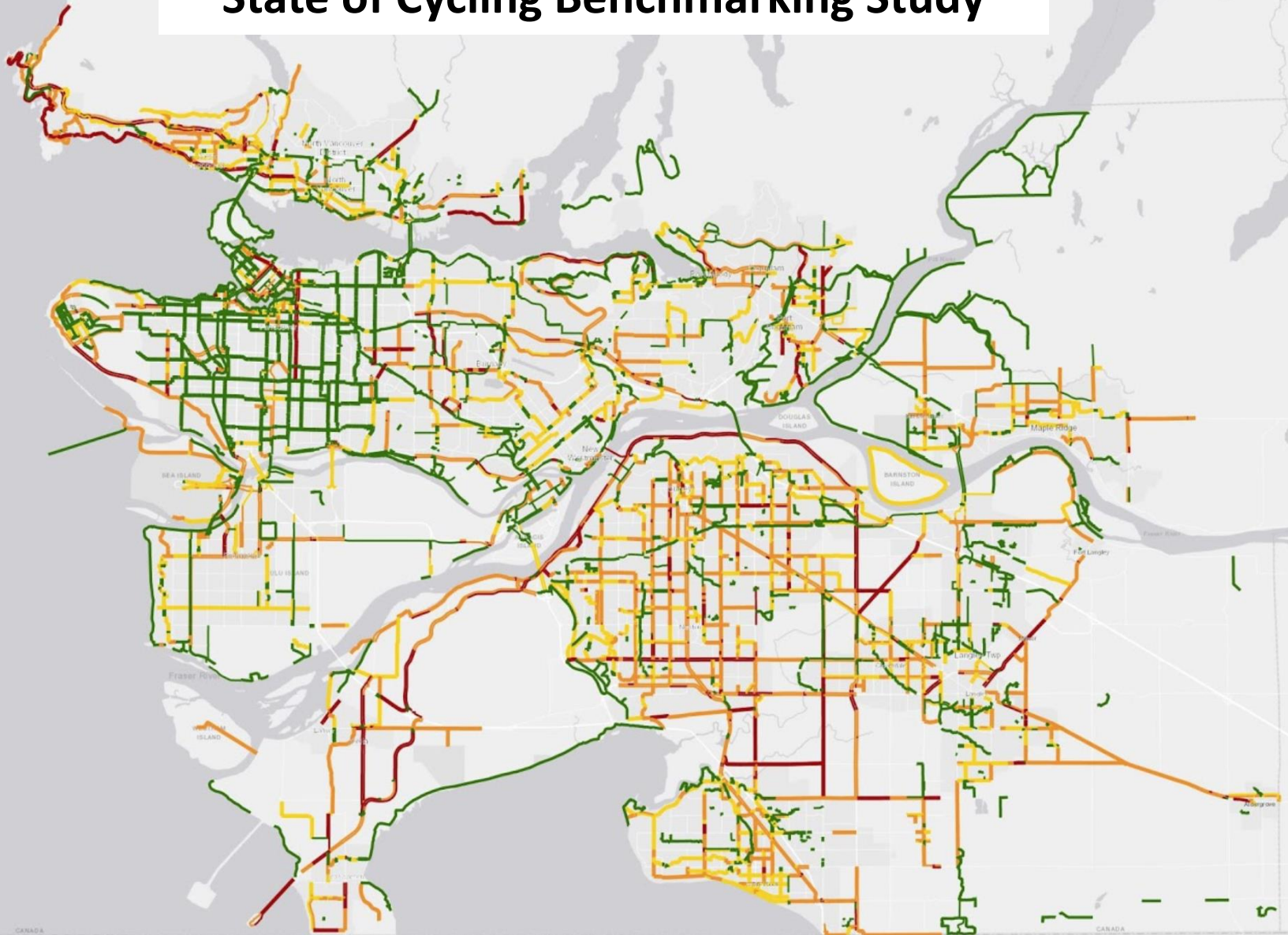


Prototype Gap Map (Vancouver/UBC) with SoC Route Data (May 2022)



Regional Bikeway Map

State of Cycling Benchmarking Study



CoV Cycling Network Improvement Budget

5-Year Cycling Network: Additions & Upgrades 2018-2022 **Added Nov 2017**

Detailed alignment and timing subject to change.

The aspiration for new routes and route upgrades is All Ages & Abilities (AAA). However, this may not always be achievable in the near term.

Upgrades can range from a series of small spot improvements to more significant changes.

Some projects fall on land outside City jurisdiction (e.g. Port, Park Board) and are subject to outside approval.

Not shown: minor additions and improvements through redevelopment and road work.

-  Planned Route
-  Planned Upgrade
-  AAA Network
-  Protected Bike Lane
-  Local Street Bikeway
-  Painted Bike Lane
-  Shared Use Lane

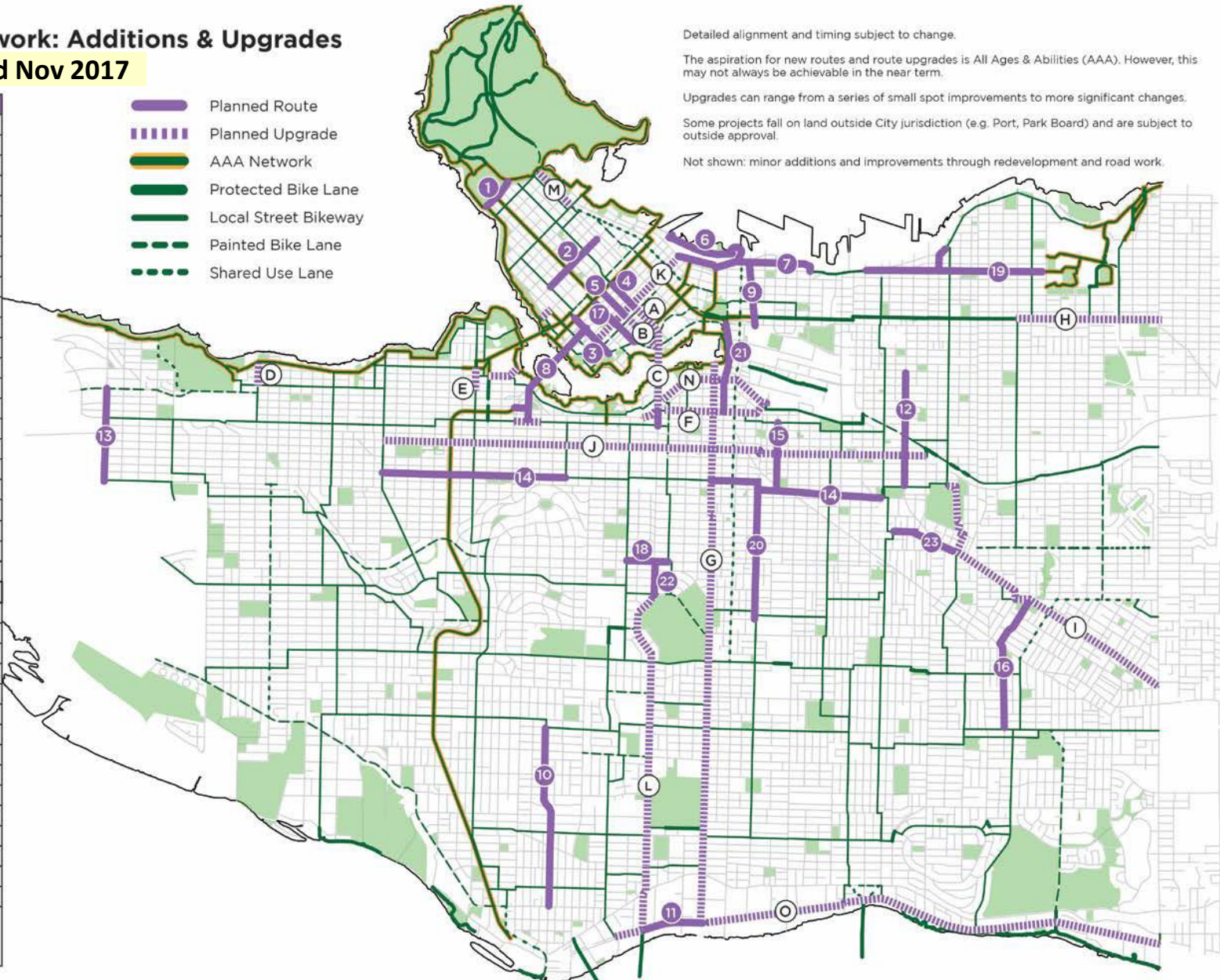
Planned Routes

1	Park Lane*
2	Bute
3	Drake
4	Smithe
5	Nelson
6	West Waterfront Road**
7	Water-Alexander-Powell
8	Granville Bridge
9	Gore
10	Hudson
11	Kent
12	Commercial
13	Blanca
14	14th Ave
15	St. George Rainway
16	Duchess-Wales*
17	Helmcken
18	King Edward
19	Pandora-Semlin
20	Prince Edward
21	Quebec
22	Cambie
23	Stainsbury

Planned Upgrades

A	Smithe
B	Nelson
C	Cambie Bridge
D	Highbury
E	Cypress
F	5th Ave
G	Ontario
H	Adanac
I	BC Parkway
J	10th Ave
K	Richards
L	Cambie
M	Georgia
N	1st Ave
O	Kent

* Park Board jurisdiction
 ** Port Authority jurisdiction
 Number/Letter sequence does not imply priority



CoV Cycling Map – Fall 2021 Update



Protected Bike Lane
People cycling are protected from motor vehicles by physical barriers such as planters, curbs, or bollards; also includes off-street paths

Local Street Bikeway
People cycling share the roadway with motor vehicles on a relatively quiet neighbourhood street

Painted Bike Lane
People cycling have a dedicated painted lane, typically between the curb or parking lane and a driving lane

Shared Use Lane
People cycling share a lane with vehicles on a busy street; these lanes fill network gaps but are not comfortable for most

AAA Network
The most comfortable parts of the network are designated as All-Ages-and-Abilities (AAA) which are emphasized by the yellow highlighted routes. The AAA Network is a connected series of mostly protected bike lanes and some local street bikeways with lower traffic volumes.

- Map Symbols**
- Moderate Uphill Route
 - Steep Uphill Route
 - One Way Bike Route
 - Mobi Station Zone (boundary contains all public bike share stations, including Downtown & Stanley Park)
 - SkyTrain Station / Bus Loop
 - Bike Parkade
 - Train Station
 - Bus Station
 - SeaBus
 - Passenger Ferry
 - Hospital
 - Community Centre
 - School

Pavement Markings

Bicycle
Indicates a bicycle route or lane

Special Reserved Lane
Indicates a reserved lane for the devices noted on associated signs or pavement markings. When combined with a bicycle this symbol indicates a dedicated bicycle lane. People cycling in the City of Vancouver are allowed to ride in these lanes.

- Narrow (Shared Roadway)**
Indicates a roadway shared with motor vehicles. The arrow shows where a people cycling should generally position themselves
- Bicycle with Arrow**
Indicates the bike route direction is changing
- Bicycle Pathway**
Indicates an off-street cycling pathway
- Shared Pathway**
Indicates an off-street pathway shared by people walking and cycling

Main Map

Pavement Markings (cont.)

Crosswalk (Elephants Feet)
Identifies the area where people biking may be crossing to provide wayfinding along protected bike lanes at intersections.

Green Paint
Highlights potential conflict areas with motor vehicles. Commonly used along protected bike lanes at intersections and driveways.

Bicycle Box
Indicates where people cycling should position themselves at a red signal, allowing them to turn left, right, or go straight in advance of other vehicles.

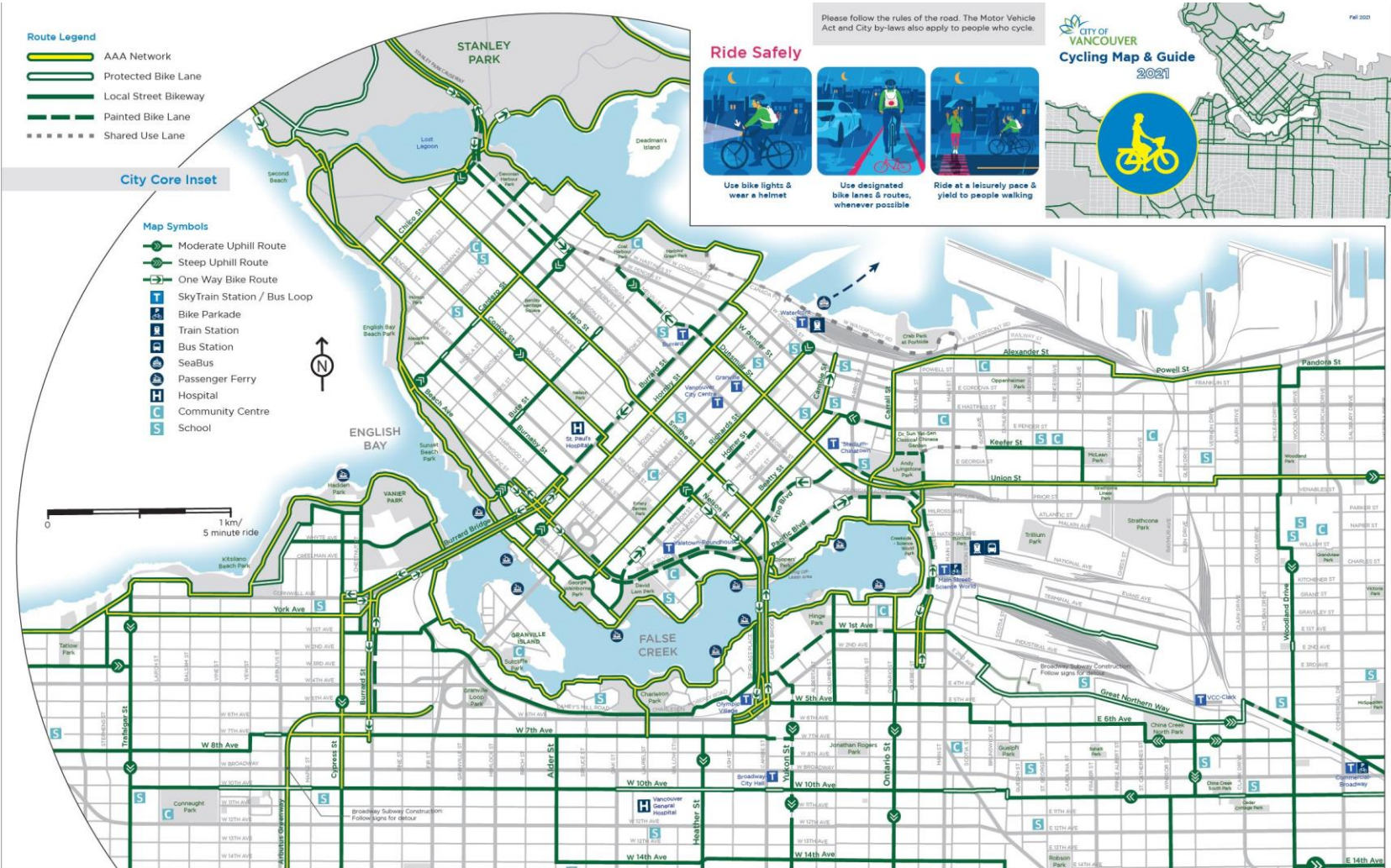


Bicycle Signal
Dedicated signal for people cycling

Turning Left Using a Bike Box
1) Go straight through the intersection when the signal is green and wait in the turn box
2) Proceed left across the intersection when the signal changes

Disclaimer of responsibility: This map is produced as a guide to cycling routes in the City of Vancouver. The City, its employees, officers, directors and representatives do not guarantee the accuracy of any route, highway, road, street, designated cycling route or other shown in the map or information.
© 2021 City of Vancouver

CoV Cycling Map – Fall 2021 Update



- Route Legend**
- AAA Network
 - Protected Bike Lane
 - Local Street Bikeway
 - Painted Bike Lane
 - Shared Use Lane

City Core Inset

- Map Symbols**
- Moderate Uphill Route
 - Steep Uphill Route
 - One Way Bike Route
 - SkyTrain Station / Bus Loop
 - Bike Parkade
 - Train Station
 - Bus Station
 - SeaBus
 - Passenger Ferry
 - Hospital
 - Community Centre
 - School

Please follow the rules of the road. The Motor Vehicle Act and City by-laws also apply to people who cycle.

Ride Safely



- Use bike lights & wear a helmet
- Use designated bike lanes & routes, whenever possible
- Ride at a leisurely pace & yield to people walking



Mobi by Show Go is Vancouver's public bike share system

- Users can unlock a bike at any station, ride, and return it to any station.
- Users can take an unlimited number of trips during their membership period.
- Most of the stations have free Wi-Fi.

For more info and current station locations:

- Visit www.mobibikes.ca
- Download the "Mobi by Show Go" App
- Call 778-655-1800

Check out the Mobi Station Zone on the Main Map. The boundary contains all public bike share stations, including Downtown and Stanley Park.

Walk + Bike + Roll: Getting Around the Vancouver Way

By walking, cycling, rolling, and taking transit more often, you can:

- Improve your personal health
- Improve the health of your environment
- Alleviate congestion on our streets

vancouver.ca/walkbikeroll

For More Information from the City of Vancouver

Phone/TTY: 3-1-1/7-1-1

Web: vancouver.ca/cycling

Download the cycling map vancouver.ca/cycling

Bike network inquiries & small upgrade projects: bikeupgrades@vancouver.ca

Report garbage, graffiti, and much more with the City's [VanConnect](http://vancouver.ca/vanconnect) app vancouver.ca/vanconnect

Micro Mobility: Where can I ride?

	Major Road	Local Road	Protected Bike Lane or Pathway	Sidewalk
Bicycle	✓	✓	✓	x
E-Bike*	✓	✓	✓	x
Moped	✓	✓	x	x
Skateboard**	x	x	x	✓
Hoverboard**	x	x	x	x
E-Skateboard**	x	x	x	x

*With the exception of medical wheelchairs, Vancouver bylaws prohibit the use of motorized devices (e-bikes and e-scooters) on the seawall.

**Curry hoverboards and e-skateboards may not be operated on roads or sidewalks as per the BC Motor Vehicle Act.

Register your Bike to Reduce Theft

It's free and takes only 5 minutes. In the event your bike goes missing, you can activate the police and community to help recover your bike.

Always report a missing bike with police. Better reporting means more returned bikes and helps law enforcement to prioritize their efforts.

www.projects29.com

Bikes on Transit

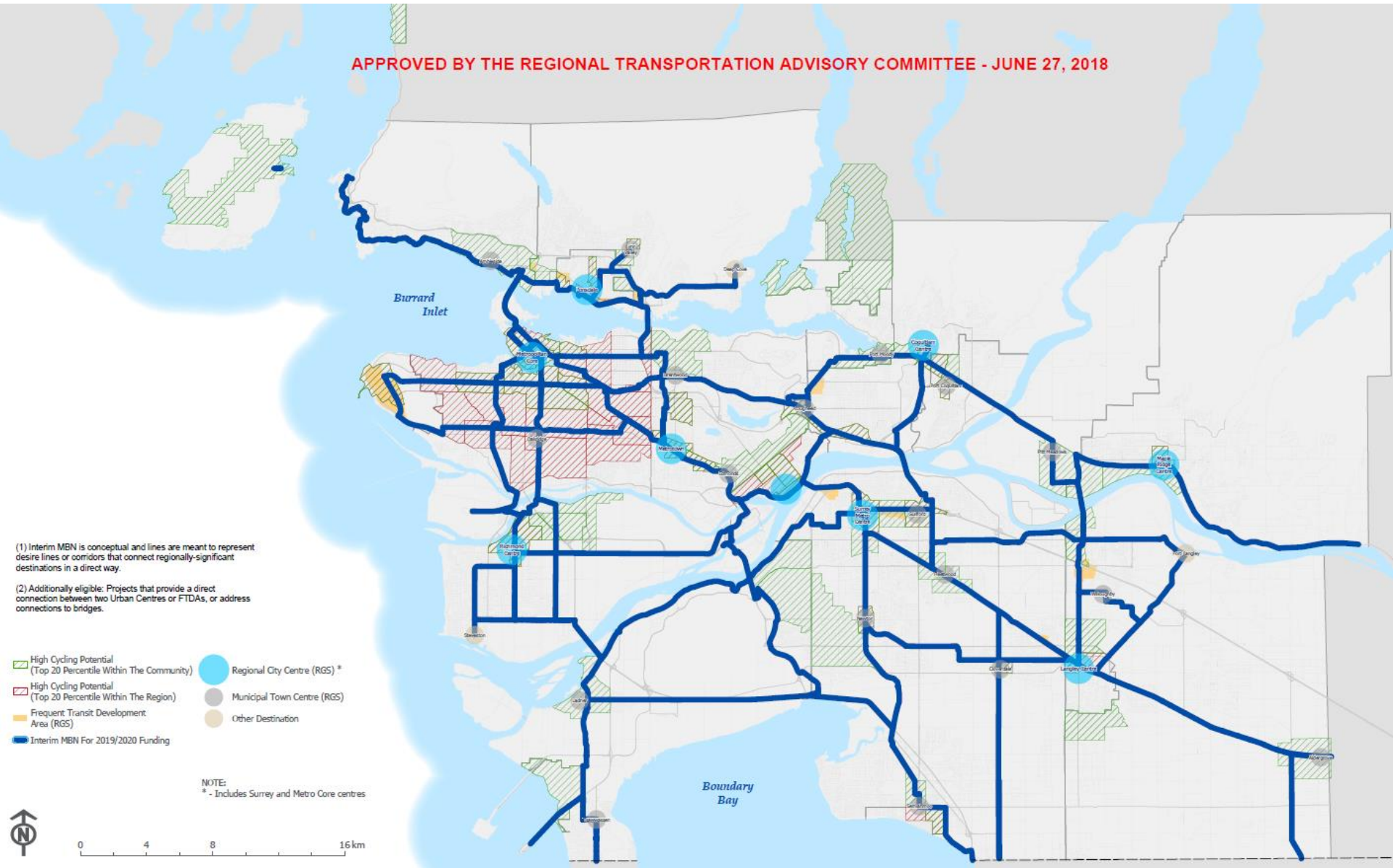
Public transit can help you and your bike go further. You can take your bike on the bus, SkyTrain, SeaBus, and WestCoast Express. Electric and folding bikes are also allowed on the system now (with some restrictions).

Bike Parkades are indoor facilities for registered Compass customers and are available in Vancouver at Main Street-Science World, King Edward, Commercial-Broadway, and Joyce-Collingwood.

For more information visit www.translink.ca

Translink Major Bikeway Network (MBN)

APPROVED BY THE REGIONAL TRANSPORTATION ADVISORY COMMITTEE - JUNE 27, 2018



(1) Interim MBN is conceptual and lines are meant to represent desire lines or corridors that connect regionally-significant destinations in a direct way.
 (2) Additionally eligible: Projects that provide a direct connection between two Urban Centres or FTDA's, or address connections to bridges.

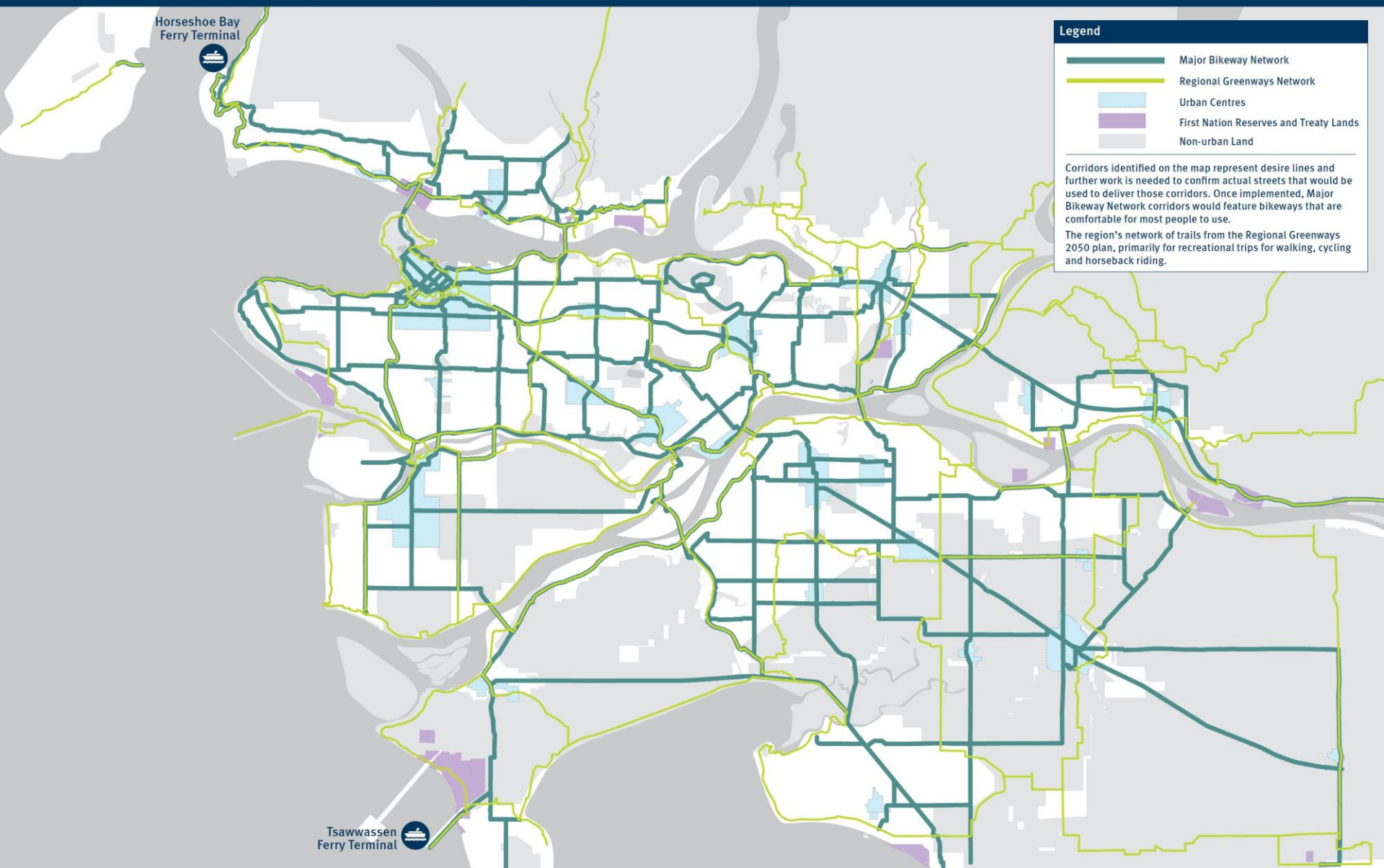
- High Cycling Potential (Top 20 Percentile Within The Community)
- High Cycling Potential (Top 20 Percentile Within The Region)
- Frequent Transit Development Area (RGS)
- Interim MBN For 2019/2020 Funding
- Regional City Centre (RGS) *
- Municipal Town Centre (RGS)
- Other Destination

NOTE:
 * - Includes Surrey and Metro Core centres



Translink Major Bikeway Network October 2021

Transport 2050 Regional Cycling Network



Legend

- Major Bikeway Network
- Regional Greenways Network
- Urban Centres
- First Nation Reserves and Treaty Lands
- Non-urban Land

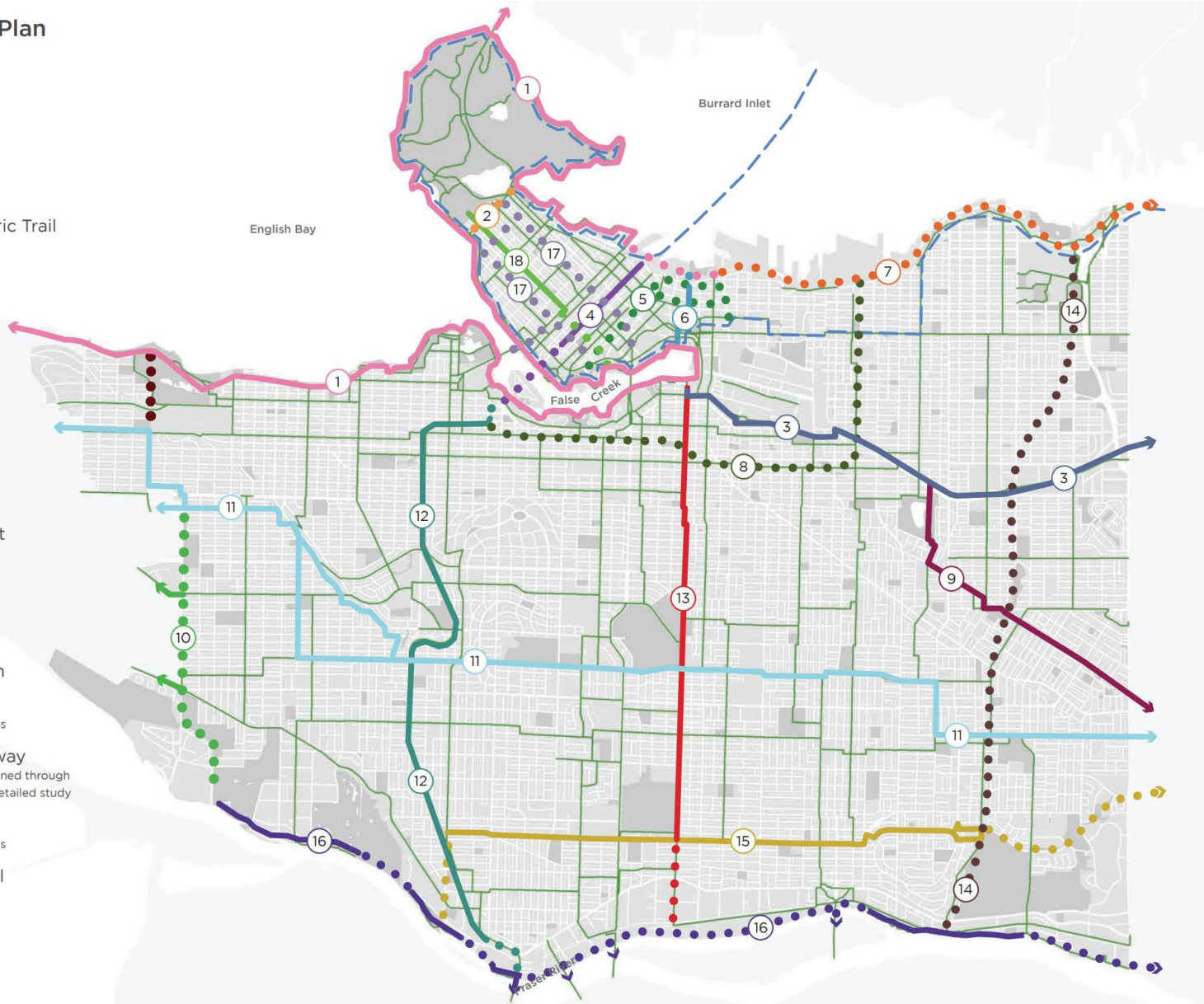
Corridors identified on the map represent desire lines and further work is needed to confirm actual streets that would be used to deliver those corridors. Once implemented, Major Bikeway Network corridors would feature bikeways that are comfortable for most people to use.

The region's network of trails from the Regional Greenways 2050 plan, primarily for recreational trips for walking, cycling and horseback riding.

Vancouver Greenways Plan

City Greenways Plan

- ① Seaside
- ② Lagoon
- ③ Central Valley
- ④ Granville
- ⑤ Downtown Historic Trail
- ⑥ Carrall
- ⑦ Portside
- ⑧ Midtown Way
- ⑨ Parkway
- ⑩ Spirit Trail
- ⑪ Ridgeway
- ⑫ Arbutus
- ⑬ Ontario
- ⑭ Eastside Crosscut
- ⑮ Masumi Mitsui
- ⑯ Fraser River Trail
- ⑰ City Centre
- ⑱ Comox-Helmcken
- Greenway
Constructed or in progress
- Proposed Greenway
Exact route to be determined through public consultation and detailed study
- Bikeway
Constructed or in progress
- - - TransCanada Trail



Metro Vancouver Greenway Plan

