

# Vancouver-UBC Local Committee

February 15<sup>th</sup>, 2022

Web Meeting via Zoom

# For a better web meeting:

- We may have many people online, so please mute your phone or microphone when you are not speaking
- Ensure your name is displayed so that we know who you are
- We have a volunteer co host who will watch the text chat queue and help make sure people can ask questions
- Take advantage of the text chat function; ask questions, raise your hand to speak, or provide feedback on a topic. This gives us a text log for the preparation of our minutes. Test it out before 6:30 pm by letting us know you are online, just enter your first name. This will help us with the minutes.
- If you are not logged in to the Zoom meeting you won't see the presentation, but you can access it on our wiki, [here](#) and follow along.
- You can use computer audio (microphone and speaker), or dial in separately

# Meeting Agenda

- Welcome, introductions, and announcements
- Updates from Working Group leads
- Consultations Update
- Local Committee Election
- Other Business
- Meeting Adjourns
- Break Out Rooms (8:00 pm – 8:30 pm)
  - Cycling in Parks
  - General Topics

# Welcome and Introductions

- Welcome to new attendees
- Anything to add to the agenda?
- Minutes from January

# Announcements

- Van Connect – please report bike lane maintenance issues, particularly debris and/or flooding
- The most important public engagement feedback opportunity this month is regarding Kits Beach Park and the proposed new paths. Please complete the survey or attend a session and show your support for addressing this gap in the Seaside Greenway.
- [HUB Cycling Bike Awards](#) will be held Feb 24 via Zoom
- At the end of our regular meeting, at 8 pm, we intend to have several Zoom breakout rooms set up, for some of our working groups. Entrance will be direct from the main meeting, with no need to log in separately. This will be an opportunity for smaller group discussions.
- Any other announcements?

# Updates from Working Group Leads

- Assessment Rides – Jeff, Philippe – Dumfries, Central Valley Greenway, Ontario Bikeway, and Stanley Park temporary protected lane assessment ride reports all finalized, approved, and posted on our wiki. UBC Wesbrook report to complete. Richard St/Smithe St ride planned. Future assessment rides?
- Cycling in Parks – Lisa - Kits Beach Park public engagement, John Hendry Park public engagement. (see details under Consultations)
- Arbutus Greenway – Stan
- Cargo Bikes and Freight – Sam
- Broadway Subway – Jeff, Anthony – Engagement with the Business Stakeholders Advisory Group, and Broadway Subway Project Traffic Advisory Group
- East Van Greenway – Clark – Portside Greenway coming to public consultation in early 2022
- Vancouver Municipal Election – Lisa – preparing for the 2022 election

# Consultations – Quadricycle Tours



- Council motion passed
- On specific roads only (not in bike lanes) and during specific hours, subject to CoV permit process
- No rider helmets required
- Stanley Park – Horse Drawn Carriage replacement?

# Consultations – Next CoV Capital Budget Plan to be Aligned with CEAP

- Motion from Councillor Carr
- That the 2023-2026 Capital Plan help ensure we meet our City's Climate Emergency Action Plan goals re GHG reduction by 2030
- Targets a 35% reduction in GHG
- Funding will include transportation measures including walking and cycling improvements
- Motion passed unanimously

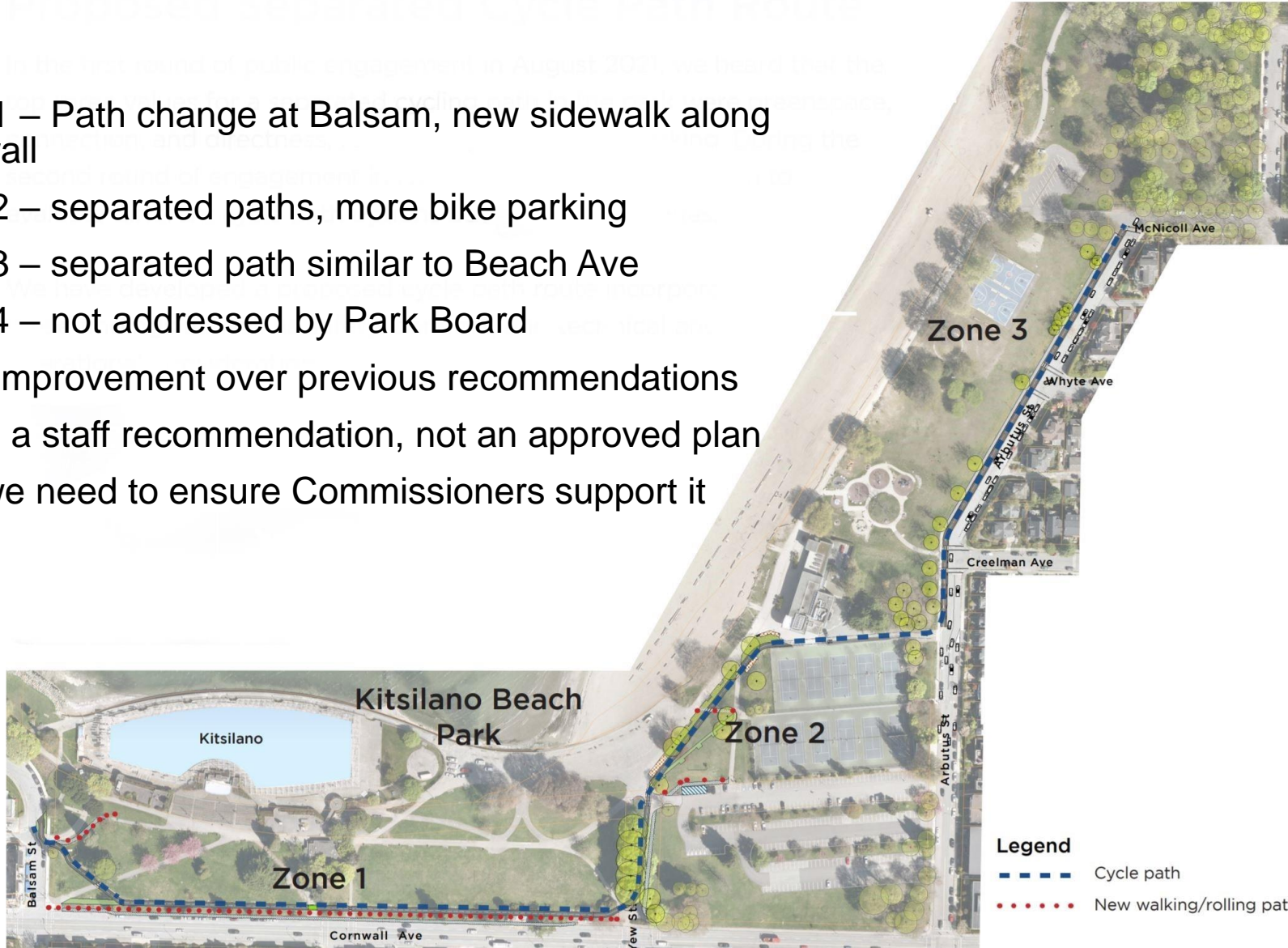


# Consultations – Kits Beach Park Seaside Greenway improvements

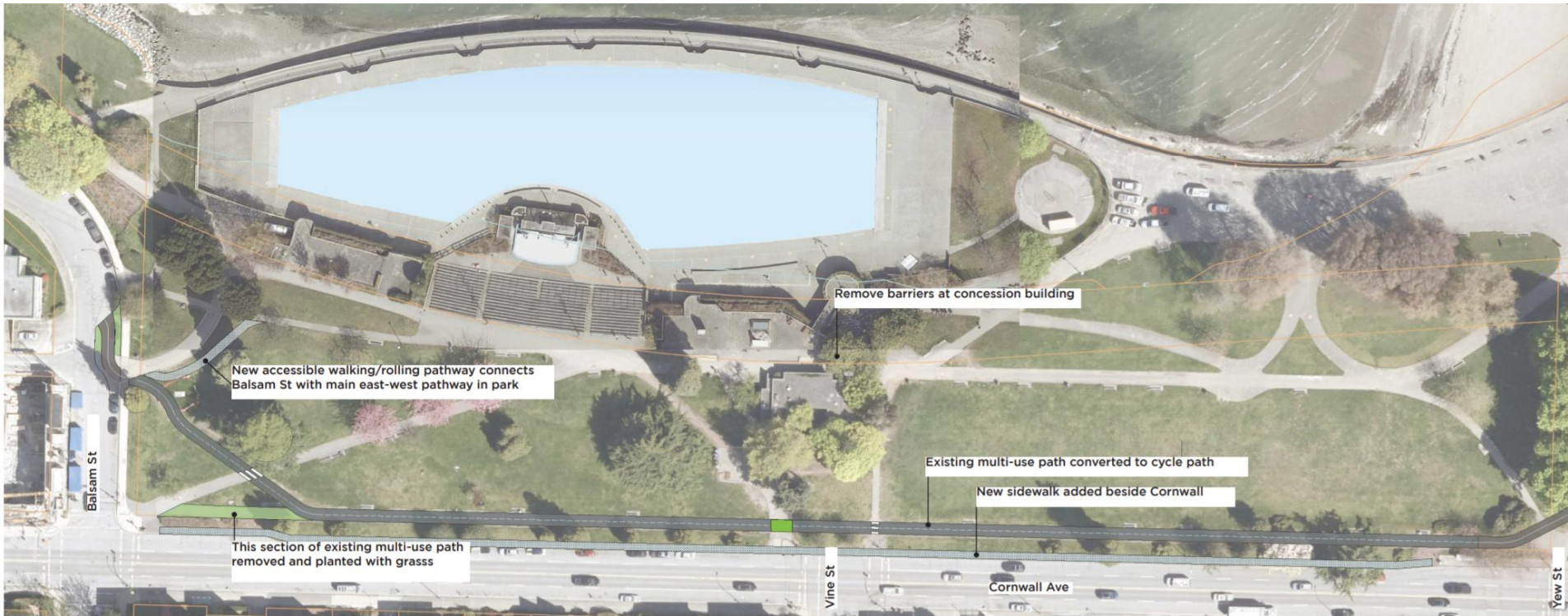
- Round 3 – Preferred cycle path route announced
- Stakeholder Engagement Sessions
- Public Engagement Virtual Drop-In Sessions
  - February 24 (12-2); March 5 (11-1)
- Top Priorities – safety and comfort
- Top Values – Greenspace, Connections, Directness
- This is still an interim solution (eg 5 years, until the Kits Beach Park Master Plan is completed)

# Consultations – Kits Beach Park Seaside Greenway improvements

- Zone 1 – Path change at Balsam, new sidewalk along Cornwall
- Zone 2 – separated paths, more bike parking
- Zone 3 – separated path similar to Beach Ave
- Zone 4 – not addressed by Park Board
- Huge improvement over previous recommendations
- This is a staff recommendation, not an approved plan
- Now we need to ensure Commissioners support it

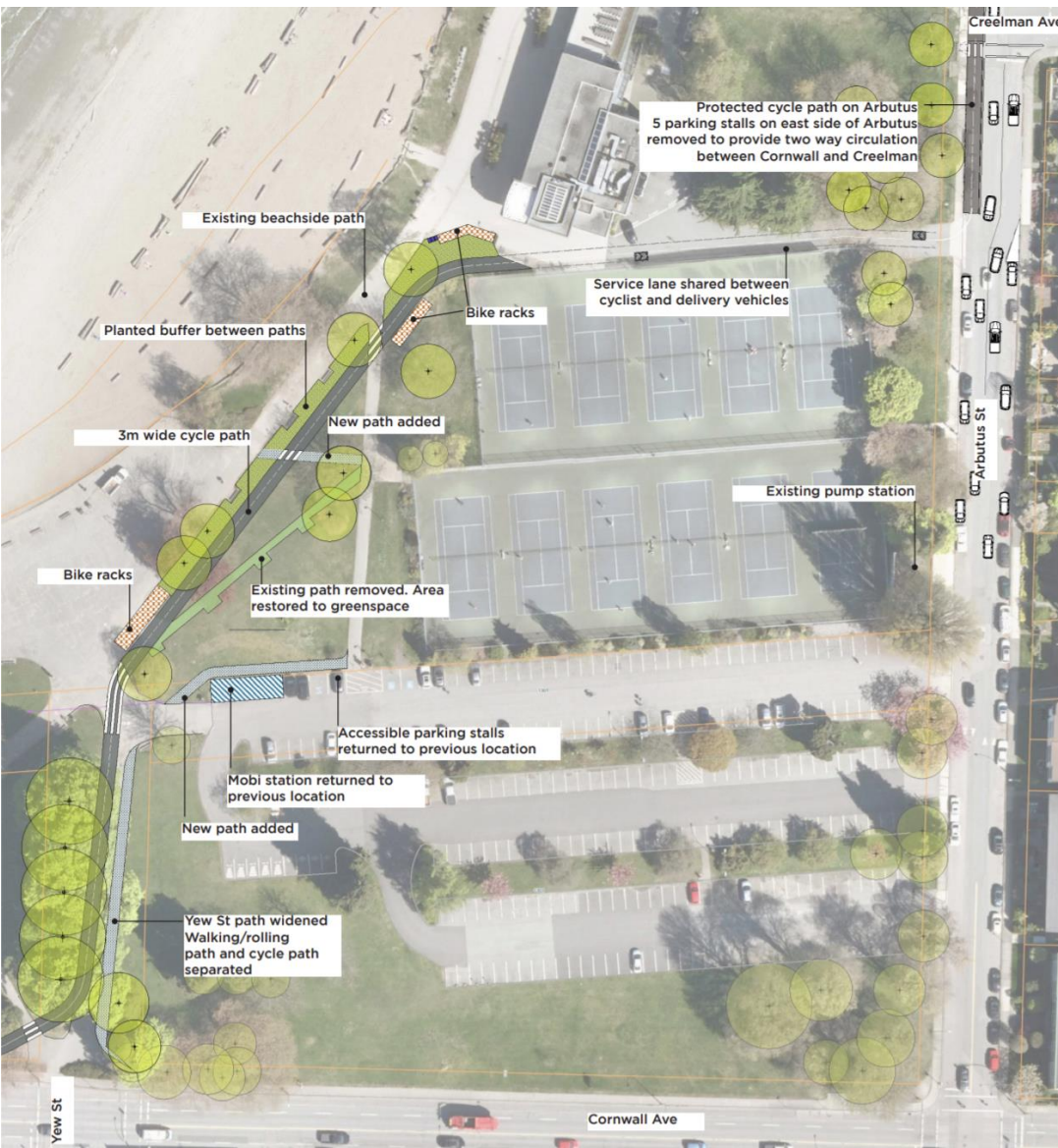


# Consultations – Kits Beach Park Zone 1 – Balsam to Yew





# Consultations – Kits Beach Park Zone 2 – Yew to Creelman





# Consultations – Kits Beach Park Zone 3 – Creelman to McNicoll



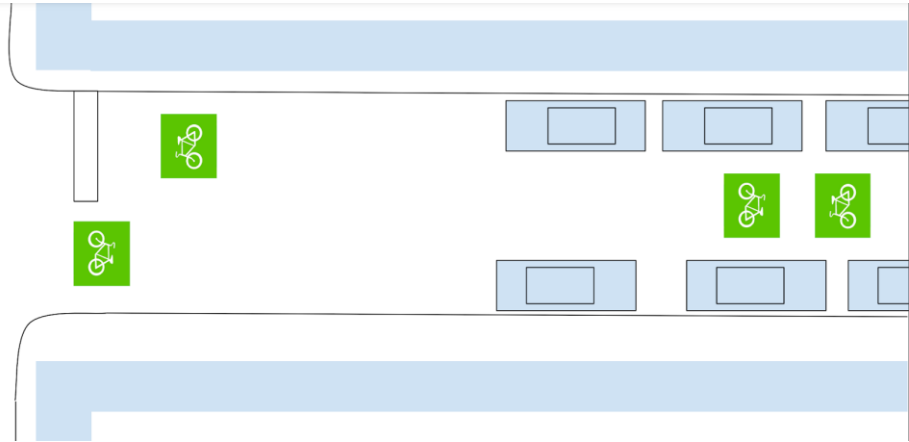
# Consultations – Kits Beach Park Seaside Greenway improvements

- Additional recommendations to the Park Board
  - Painted centre line on the bike paths
  - Painted crossings of the bike paths
  - Very happy to see some low value pavement being removed; should consider removing more
- Additional recommendations to the City
  - Consider access to the Arbutus protected bike lane at each intersection
  - Consider providing a separated bidirectional bike lane along the north side of Ogden, to match the one on Arbutus
  - Monitor cycle volumes this summer to determine if 3 m width is sufficient

# Consultations – Pavement Markings on Local Street Bikeways

- For discussion: Consider an opportunity to improve pavement markings on local street bikeways using bike stencils on a solid colour background.
- This could include routes such as 3<sup>rd</sup>, Off Broadway, 10<sup>th</sup>, 14<sup>th</sup>, Ridgeway, Adanac, etc.
- Similar to markings used for sharrows, but without arrows to indicate bike positioning.
- Would this make it safer or more comfortable for people cycling by establishing that people on bikes may be on the street, essentially proclaiming “bikes belong here”.
- Should we be advocating for this? Thoughts?

# Consultations – Potential Pavement Markings on Local Street Bikeways





# Consultations – Current Pavement Markings on Local Street Bikeways



Seaside Greenway at Howe St.



Yukon St at 10<sup>th</sup> Ave.

# Consultations – Coming Soon

- Bute St Greenway (Spring 2022)
- Draft Broadway Plan (Feb 28 release)
- Oakridge Property Development (Public Hearing March 1<sup>st</sup>)
- John Hendry Park Renewal Plan (Early 2022)
- Portside Greenway Proposal (Early 2022)

# Consultations – Portside Greenway

## City Greenways Plan

- ① Seaside
  - ② Lagoon
  - ③ Central Valley
  - ④ Granville
  - ⑤ Downtown Historic Trail
  - ⑥ Carrall
  - ⑦ Portside
  - ⑧ Midtown Way
  - ⑨ Parkway
  - ⑩ Spirit Trail
  - ⑪ Ridgeway
  - ⑫ Arbutus
  - ⑬ Ontario
  - ⑭ Eastside Crosscut
  - ⑮ Masumi Mitsui
  - ⑯ Fraser River Trail
  - ⑰ City Centre
  - ⑱ Comox-Helmcken
- Greenway  
Constructed or in progress
  - Proposed Greenway  
Exact route to be determined through public consultation and detailed study
  - Bikeway  
Constructed or in progress
  - - - TransCanada Trail



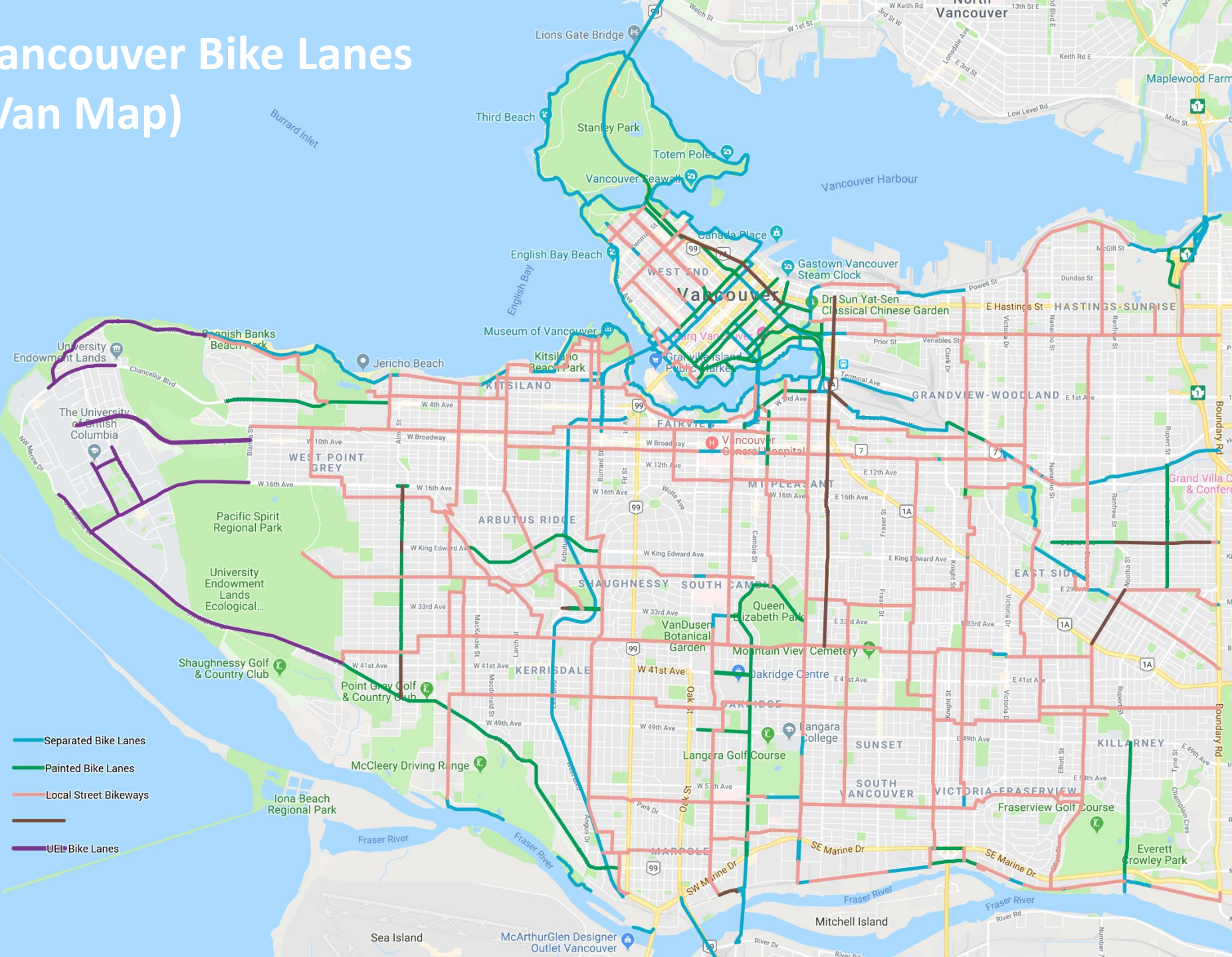
# Breakout Rooms

- We have set up several Breakout Rooms so that our working groups can continue with smaller group discussions.
- Each will have a moderator/leader. The rooms will be open for 30 minutes.
- Please select which one you would like to go to
  - Cycling in Parks (Anthony)
  - General Discussion (Jeff)

# Appendices

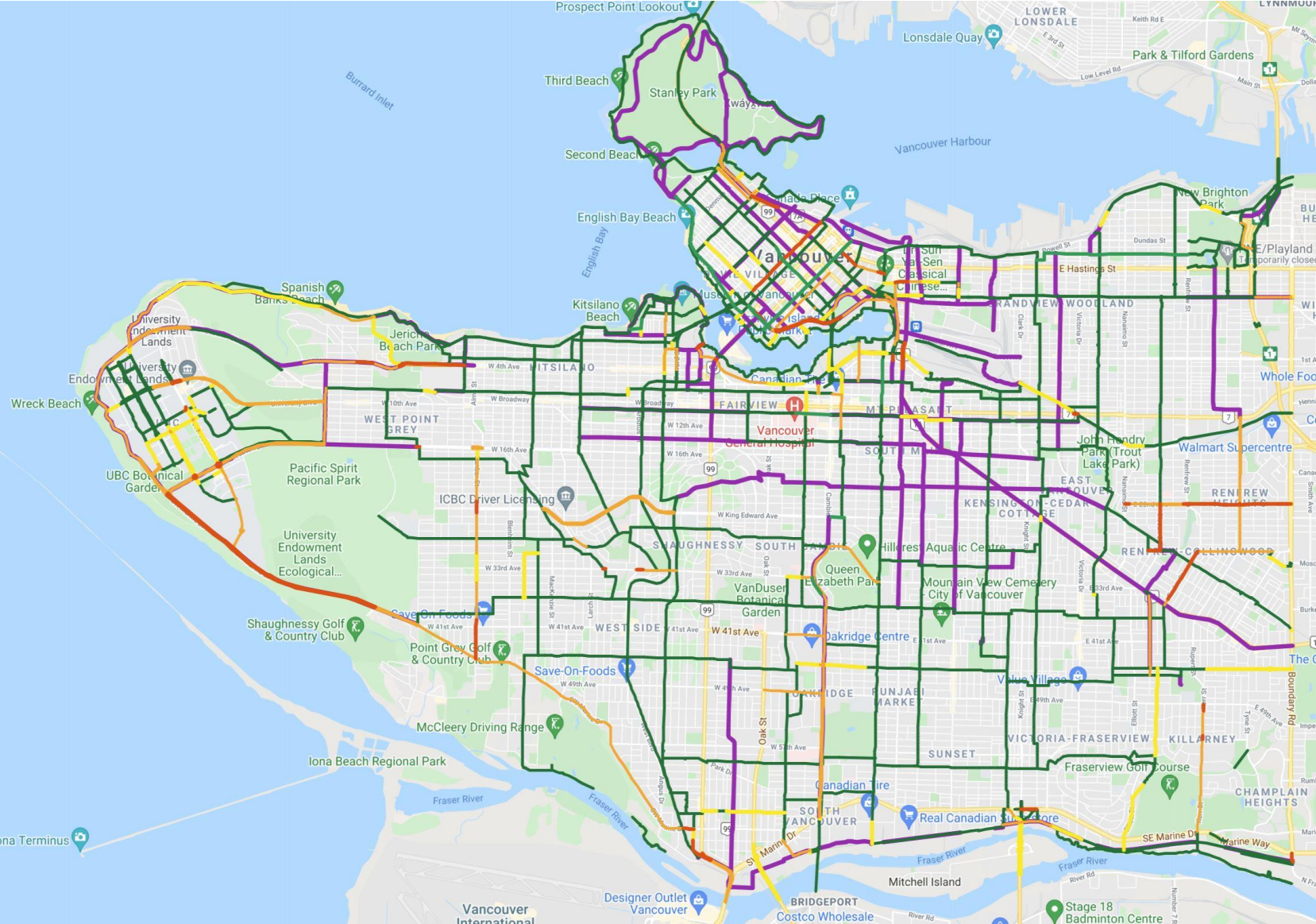


# Vancouver Bike Lanes (Van Map)



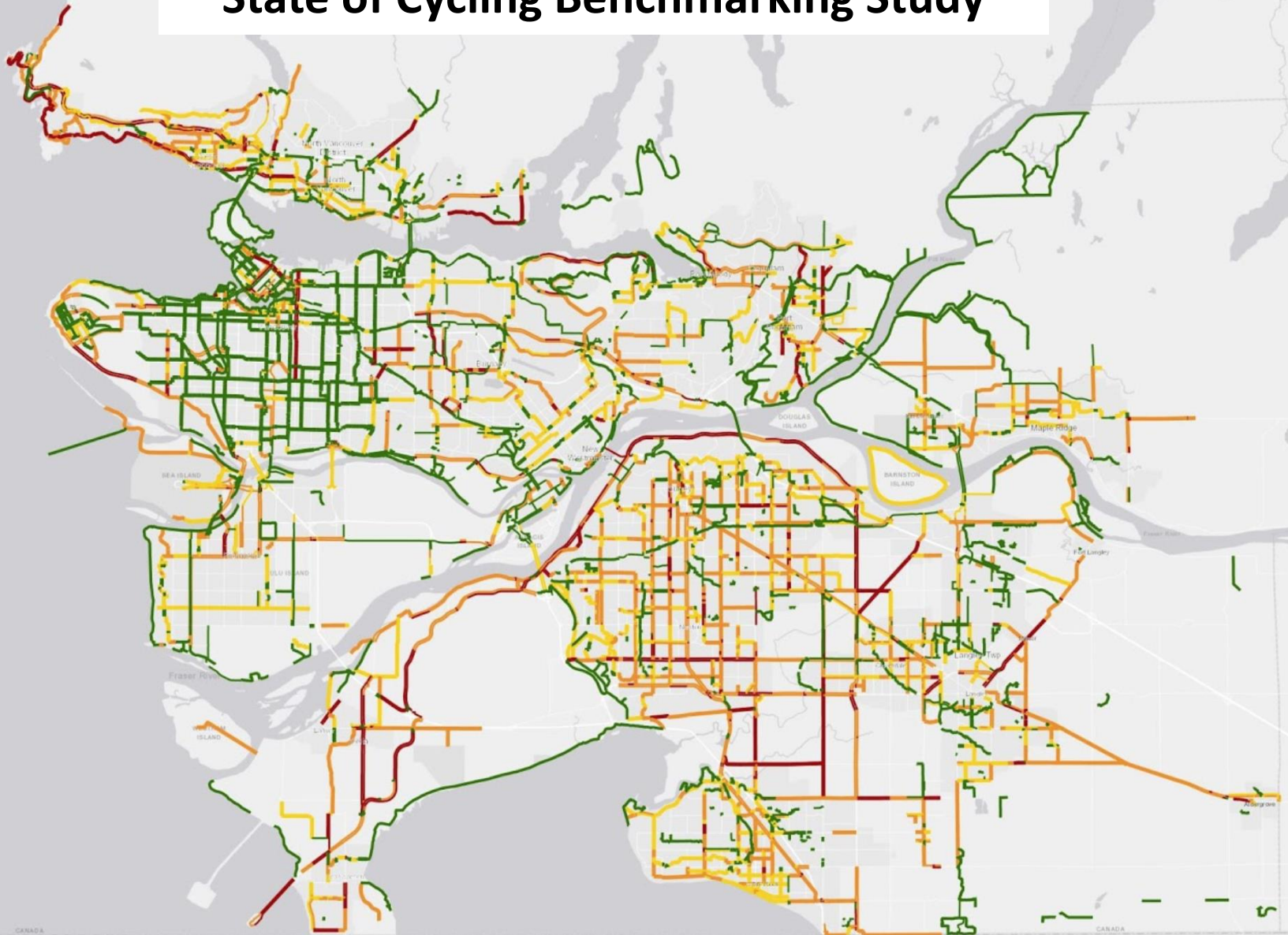


# Prototype Gap Map (Vancouver/UBC) with SoC Route Data (January 2022)



# Regional Bikeway Map

## State of Cycling Benchmarking Study





# CoV Cycling Network Improvement Budget

## 5-Year Cycling Network: Additions & Upgrades 2018-2022 **Added Nov 2017**

Detailed alignment and timing subject to change.

The aspiration for new routes and route upgrades is All Ages & Abilities (AAA). However, this may not always be achievable in the near term.

Upgrades can range from a series of small spot improvements to more significant changes.

Some projects fall on land outside City jurisdiction (e.g. Port, Park Board) and are subject to outside approval.

Not shown: minor additions and improvements through redevelopment and road work.

-  Planned Route
-  Planned Upgrade
-  AAA Network
-  Protected Bike Lane
-  Local Street Bikeway
-  Painted Bike Lane
-  Shared Use Lane

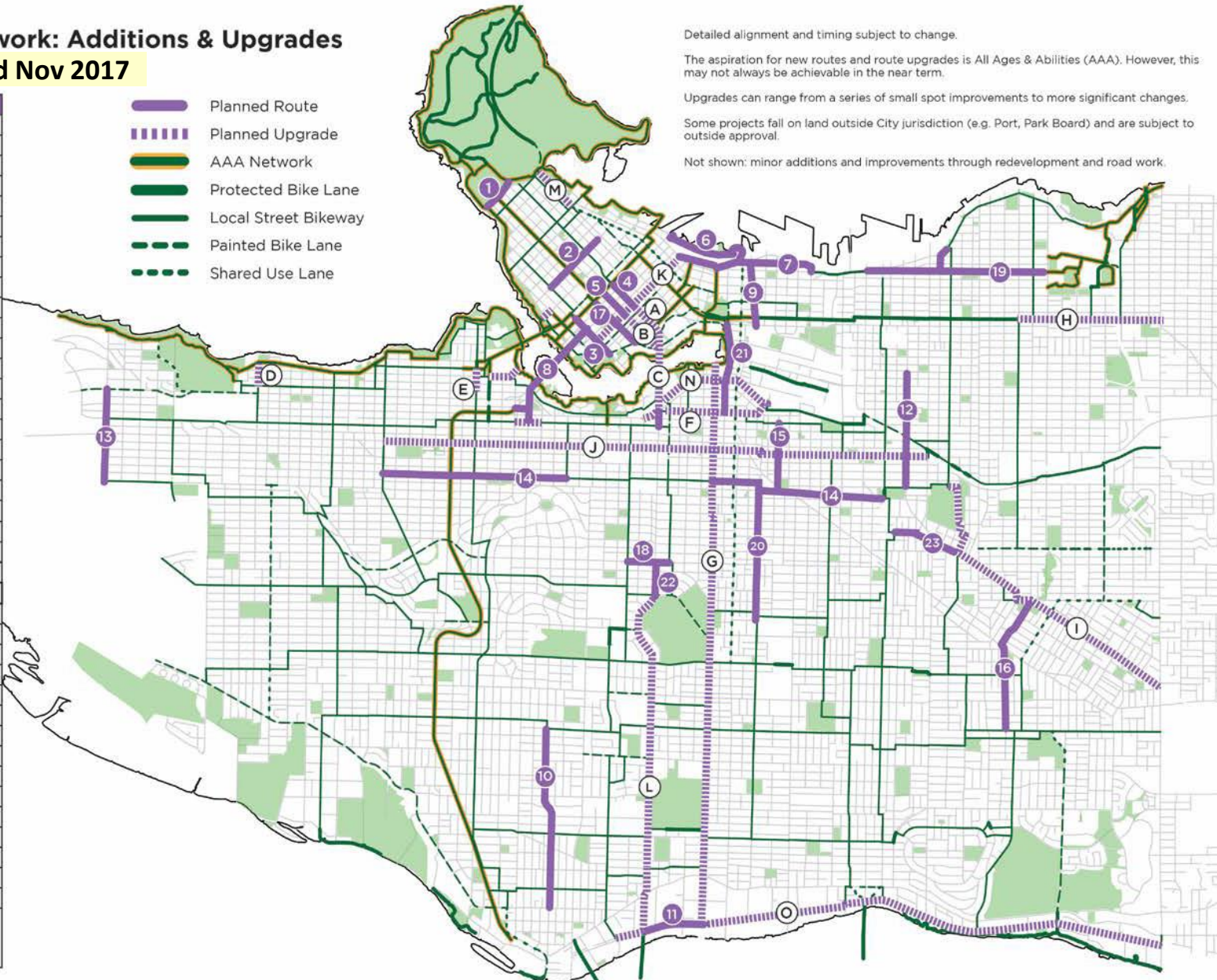
### Planned Routes

1	Park Lane*
2	Bute
3	Drake
4	Smithe
5	Nelson
6	West Waterfront Road**
7	Water-Alexander-Powell
8	Granville Bridge
9	Gore
10	Hudson
11	Kent
12	Commercial
13	Blanca
14	14th Ave
15	St. George Rainway
16	Duchess-Wales*
17	Helmcken
18	King Edward
19	Pandora-Semlin
20	Prince Edward
21	Quebec
22	Cambie
23	Stainsbury

### Planned Upgrades

A	Smithe
B	Nelson
C	Cambie Bridge
D	Highbury
E	Cypress
F	5th Ave
G	Ontario
H	Adanac
I	BC Parkway
J	10th Ave
K	Richards
L	Cambie
M	Georgia
N	1st Ave
O	Kent

\* Park Board jurisdiction  
 \*\* Port Authority jurisdiction  
 Number/Letter sequence does not imply priority





# CoV Cycling Map – Fall 2021 Update



**Protected Bike Lane**  
People cycling are protected from motor vehicles by physical barriers such as planters, curbs, or bollards; also includes off-street paths

**Local Street Bikeway**  
People cycling share the roadway with motor vehicles on a relatively quiet neighbourhood street

**Painted Bike Lane**  
People cycling have a dedicated painted lane, typically between the curb or parking lane and a driving lane

**Shared Use Lane**  
People cycling share a lane with vehicles on a busy street; these lanes fill network gaps but are not comfortable for most

**AAA Network**  
The most comfortable parts of the network are designated as All-Ages-and-Abilities (AAA) which are emphasized by the yellow highlighted routes. The AAA Network is a connected series of mostly protected bike lanes and some local street bikeways with lower traffic volumes.

- Map Symbols**
- Moderate Uphill Route
  - Steep Uphill Route
  - One Way Bike Route
  - Mobi Station Zone (boundary contains all public bike share stations, including Downtown & Stanley Park)
  - SkyTrain Station / Bus Loop
  - Bike Parkade
  - Train Station
  - Bus Station
  - SeaBus
  - Passenger Ferry
  - Hospital
  - Community Centre
  - School

**Pavement Markings**

**Bicycle**  
Indicates a bicycle route or lane

**Special Reserved Lane**  
Indicates a reserved lane for the devices noted on associated signs or pavement markings. When combined with a bicycle this symbol indicates a dedicated bicycle lane. People cycling in the City of Vancouver are allowed to ride in these lanes.

- Narrow (Shared Roadway)**  
Indicates a roadway shared with motor vehicles. The arrow shows where a people cycling should generally position themselves
- Bicycle with Arrow**  
Indicates the bike route direction is changing
- Bicycle Pathway**  
Indicates an off-street cycling pathway
- Shared Pathway**  
Indicates an off-street pathway shared by people walking and cycling

**Pavement Markings (cont.)**

**Crosswalk (Elephants Feet)**  
Identifies the area where people biking may be crossing to provide wayfinding along protected bike lanes at intersections.

**Green Paint**  
Highlights potential conflict areas with motor vehicles. Commonly used along protected bike lanes at intersections and driveways.

**Bicycle Box**  
Indicates where people cycling should position themselves at a red signal, allowing them to turn left, right, or go straight in advance of other vehicles.

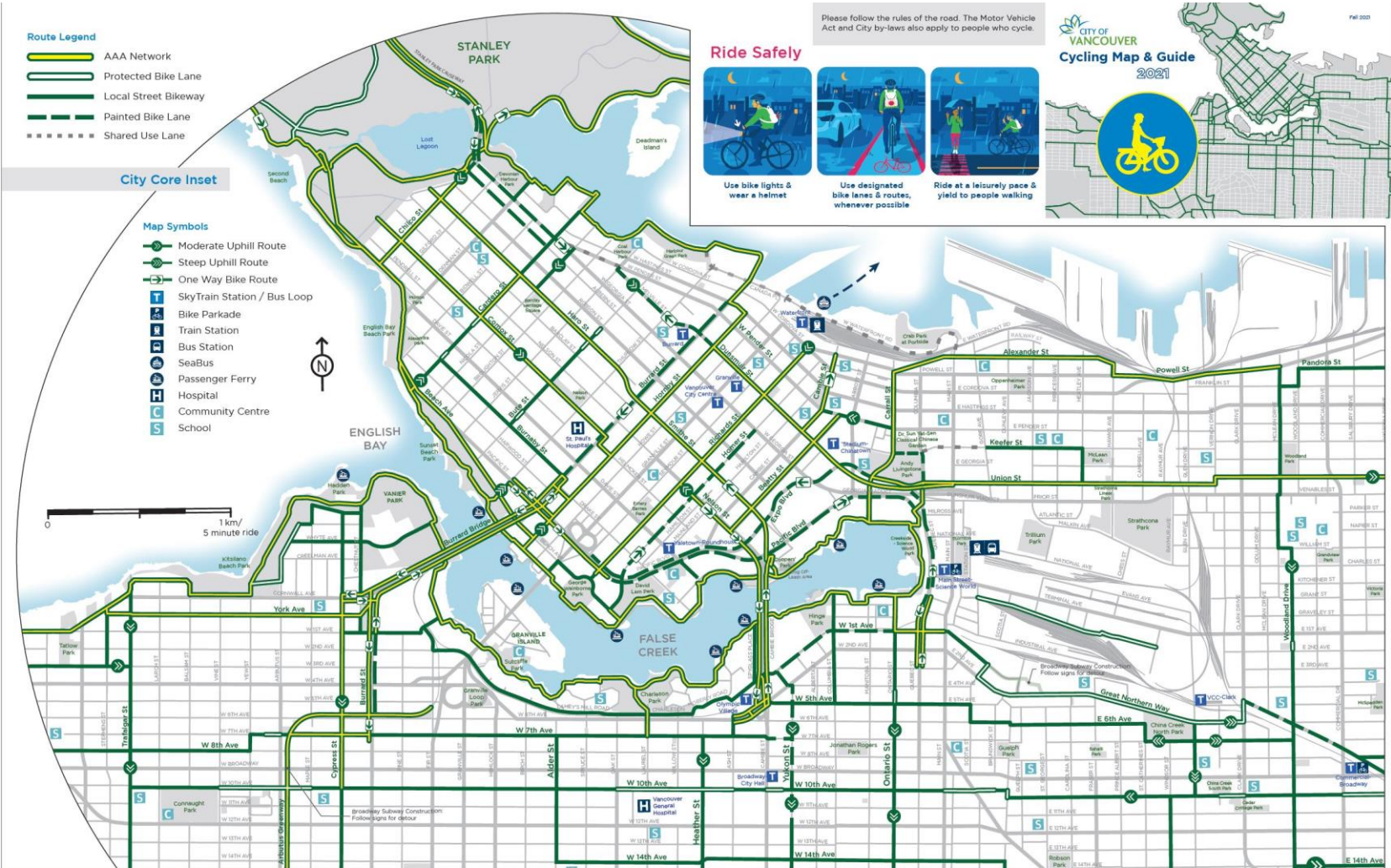
**Bicycle Signal**  
Dedicated signal for people cycling

**Turning Left Using a Bike Box**  
1) Go straight through the intersection when the signal is green and wait in the turn box  
2) Proceed left across the intersection when the signal changes

Disclaimer of responsibility:  
This map is produced as a guide to cycling routes in the City of Vancouver. The City, its employees, officers, directors and representatives do not guarantee the accuracy of any information contained therein nor warrant the safety of any route, highway, road, street, designated cycling route or other shown in the map or information.  
© 2021 City of Vancouver



# CoV Cycling Map – Fall 2021 Update



- Route Legend**
- AAA Network
  - Protected Bike Lane
  - Local Street Bikeway
  - Painted Bike Lane
  - Shared Use Lane

**City Core Inset**

- Map Symbols**
- Moderate Uphill Route
  - Steep Uphill Route
  - One Way Bike Route
  - SkyTrain Station / Bus Loop
  - Bike Parkade
  - Train Station
  - Bus Station
  - SeaBus
  - Passenger Ferry
  - Hospital
  - Community Centre
  - School

Please follow the rules of the road. The Motor Vehicle Act and City by-laws also apply to people who cycle.

**Ride Safely**



- Use bike lights & wear a helmet
- Use designated bike lanes & routes, whenever possible
- Ride at a leisurely pace & yield to people walking



**Mobi by Show Go is Vancouver's public bike share system**

- Users can unlock a bike at any station, ride, and return it to any station.
- Users can take an unlimited number of trips during their membership period.
- Most of the stations have free Wi-Fi.

**For more info and current station locations:**

- Visit [www.mobibikes.ca](http://www.mobibikes.ca)
- Download the "Mobi by Show Go" App
- Call 778-655-1800

Check out the Mobi Station Zone on the Main Map. The boundary contains all public bike share stations, including Downtown and Stanley Park.

**Walk + Bike + Roll: Getting Around the Vancouver Way**

By walking, cycling, rolling, and taking transit more often, you can:

- Improve your personal health
- Improve the health of your environment
- Alleviate congestion on our streets

[vancouver.ca/walkbikeroll](http://vancouver.ca/walkbikeroll)

**For More Information from the City of Vancouver**

Phone/TTY: 3-1-1/7-1-1

Web: [vancouver.ca/cycling](http://vancouver.ca/cycling)

Download the cycling map [vancouver.ca/cycling](http://vancouver.ca/cycling)

Bike network inquiries & small upgrade projects: [bikeupgrades@vancouver.ca](mailto:bikeupgrades@vancouver.ca)

Report garbage, graffiti, and much more with the City's [VanConnect](http://vancouver.ca/vanconnect) app [vancouver.ca/vanconnect](http://vancouver.ca/vanconnect)

**Micro Mobility: Where can I ride?**

	Major Road	Local Road	Protected Bike Lane or Pathway	Sidewalk
Bicycle	✓	✓	✓	x
E-Bike*	✓	✓	✓	x
Moped	✓	✓	x	x
Skateboard**	x	x	x	✓
Hoverboard**	x	x	x	✓
E-Skateboard**	x	x	x	x

\*With the exception of medical wheelchairs, Vancouver bylaws prohibit the use of motorized devices (e-bikes and e-scooters) on the seawall.

\*\*Curry hoverboards and e-skateboards may not be operated on roads or sidewalks as per the BC Motor Vehicle Act.

**Register your Bike to Reduce Theft**

It's free and takes only 5 minutes. In the event your bike goes missing, you can activate the police and community to help recover your bike.

Always report a missing bike with police. Better reporting means more returned bikes and helps law enforcement to prioritize their efforts.

[www.projects29.com](http://www.projects29.com)

**Bikes on Transit**

Public transit can help you and your bike go further. You can take your bike on the bus, SkyTrain, SeaBus, and WestCoast Express. Electric and folding bikes are also allowed on the system now (with some restrictions).

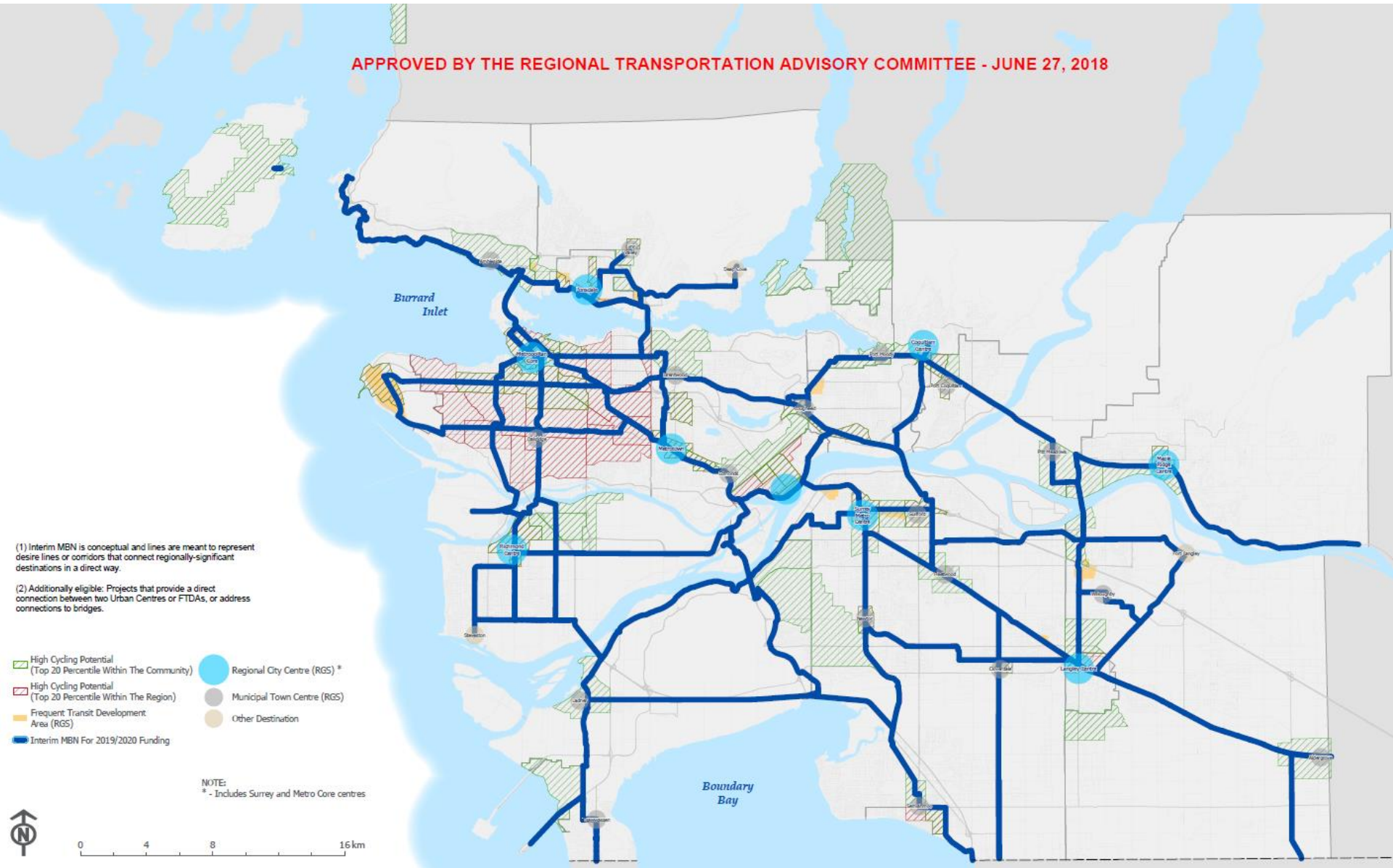
Bike Parkades are indoor facilities for registered Compass customers and are available in Vancouver at Main Street-Science World, King Edward, Commercial-Broadway, and Joyce-Collingwood.

For more information visit [www.translink.ca](http://www.translink.ca)



# Translink Major Bikeway Network (MBN)

APPROVED BY THE REGIONAL TRANSPORTATION ADVISORY COMMITTEE - JUNE 27, 2018



# Translink Proposed MBN October 2021

## Transport 2050 Regional Cycling Network

