

# Vancouver-UBC Local Committee

January 17, 2023

Web Meeting via Zoom

# For a better web meeting:

- We may have many people online, so please mute your phone or microphone when you are not speaking
- Ensure your name is displayed so that we know who you are
- We have a volunteer co host who will watch the text chat queue and help make sure people can ask questions
- Take advantage of the text chat function; ask questions, raise your hand to speak, or provide feedback on a topic. This gives us a text log for the preparation of our minutes. Test it out before 6:30 pm by letting us know you are online, just enter your first name. This will help us with the minutes.
- If you are not logged in to the Zoom meeting you won't see the presentation, but you can access it on our wiki, [here](#) and follow along.
- You can use computer audio (microphone and speaker), or dial in separately

# Meeting Agenda

- Welcome and introductions
- Agenda and Action Item Review
- Presentation by CoV staff – Greenway Projects
- Announcements
- Updates from Working Group leads
- Consultations Update
- Other Business
- Meeting Adjourns (8:00 pm)
- Break Out Rooms (8:00 pm – 8:30 pm)

# Welcome and Introductions

- Welcome to new attendees
- Anything to add to the agenda?
- Minutes from November meeting

# Presentations by CoV staff

- The Portside Greenway – Erica Mason
  - Progress on a new East Van Greenway
- The East Side Crosscut – Paul Krueger
  - Proposed Routing for a new North-South East Van Greenway
- Other Updates

# Vancouver Greenways Plan

## City Greenways Plan

- ① Seaside
  - ② Lagoon
  - ③ Central Valley
  - ④ Granville
  - ⑤ Downtown Historic Trail
  - ⑥ Carrall
  - ⑦ Portside
  - ⑧ Midtown Way
  - ⑨ Parkway
  - ⑩ Spirit Trail
  - ⑪ Ridgeway
  - ⑫ Arbutus
  - ⑬ Ontario
  - ⑭ Eastside Crosscut
  - ⑮ Masumi Mitsui
  - ⑯ Fraser River Trail
  - ⑰ City Centre
  - ⑱ Comox-Helmcken
- Greenway  
Constructed or in progress
- Proposed Greenway  
Exact route to be determined through public consultation and detailed study
- Bikeway  
Constructed or in progress
- TransCanada Trail



# Announcements

- Van Connect – please report bike lane maintenance issues to the City
- On February 15, City staff are planning to present the Climate Emergency Action Plan Annual Report to Council, outlining our progress, successes, and challenges when it comes to implementing the CEAP. The CoV Amplifier Network will hold a briefing on this on February 7. Please advise Jeff if you would like to attend this briefing
- The City is seeking public feedback on the 2023 budget. The full 2023 Draft Current State Budget includes short and long-term funding to support key City plans and priorities. In December, City Council approved the Capital budget and deferred a decision on the 2023 Operating budget to spring 2023. There is an opportunity to indicate your priorities for City spending. See more details in the agenda.

# Announcements

- HUB Cycling research staff have completed a Report on Cycling and Older Buildings, looking at the impacts of outdated building design on access to cycling, with an equity lens.
- HUB Cycling is turning 25 years-old in 2023! Staff are looking for a talented artist to design a graphic for our 25th anniversary t-shirts. Indigenous and racialized artists are strongly encouraged to apply. Your artwork will be financially compensated.
- Upcoming Event: Breaking Down Barriers to Cycling for University Students. Join HUB staff at UBC or online on January 24 from 6:00-7:30 PM for a free panel discussion where our expert speakers will highlight resources available to overcome barriers and start cycling.
- Please join us at HUB Cycling's 10th annual virtual Bike Awards ceremony on Thursday, February 23, from 7-8:00 PM! HUB Cycling is awarding organizations and individuals that achieved great things for cycling in 2022, while also showcasing personal stories and successes.



# Announcements

- HUB staff are planning on running a special program to promote cycling with native youth, at the invitation of the Musqueam band. This follows a successful program in Pitt Meadows with the Katzie band. Bikes are given to the participants at the end of the program. Volunteers are required to find and potentially fix up 5 bikes (5 are in hand, and funding has been sourced for 10 more). Let Jeff know asap if you are interested in helping out.
- At the end of our regular meeting, at 8 pm, we will have several Zoom breakout rooms set up, for some of our working groups (Cycling in Parks, General Discussion)
- Any other announcements?

# Action Item Review

- Van Connect – please report bike lane maintenance issues to the CoV
- Philippe - Plan and hold SW Marine assessment ride
  - Ride held, report in progress

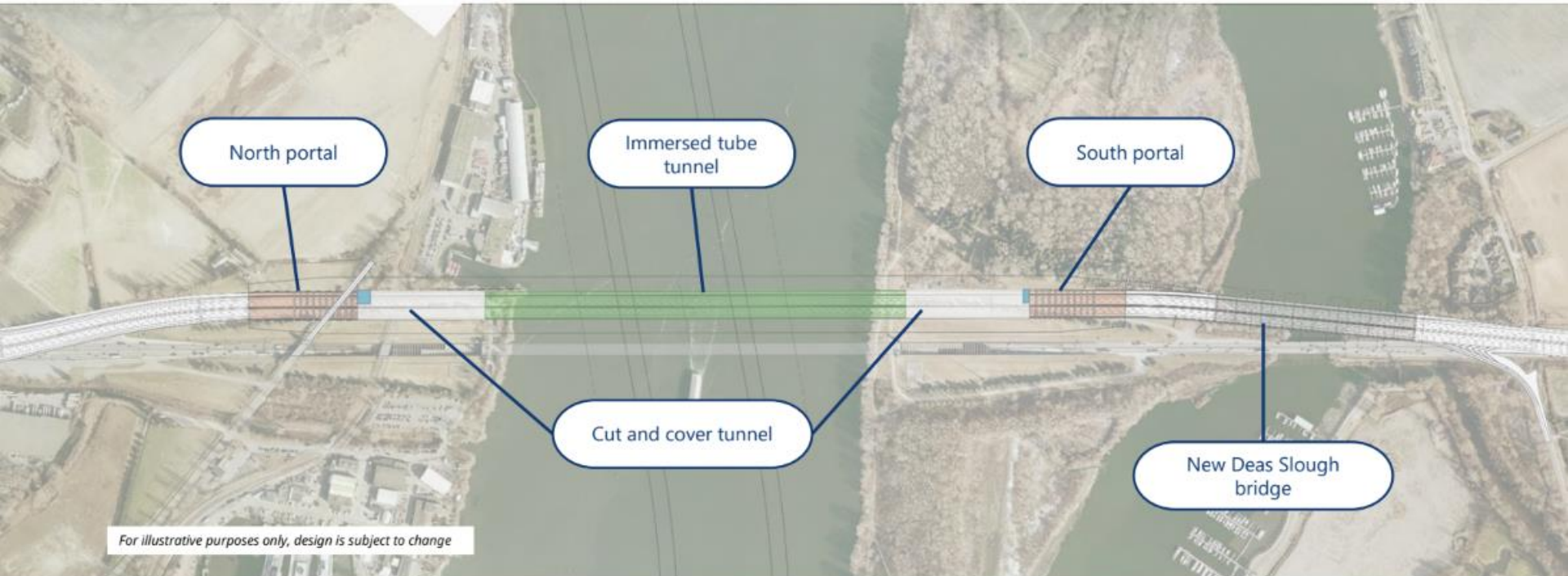
# Updates from Working Group Leads

- Assessment Rides – Jeff, Anthony, Philippe – SW Marine report in progress.
- Cycling in Parks – Lisa - Update
- Arbutus Greenway – Stan – No update this month
- Broadway Subway – Jeff, Anthony – Traffic advisories being received
- Elections Working Group – Lisa
- East Van Greenway – Clark – See presentation

# Consultations – Hwy 99 Tunnel Program

- Engagement by the Regional Advisory Committee, but likely of interest to Vancouver UBC LC members
- The Hwy 99 Tunnel Program includes
  - The Fraser River Tunnel Project
  - The Steveston Interchange Project
  - Improved connections at Bridgeport
  - Improvements at the Hwy 17A interchange
- Our advocacy focus is on the design features of the crossing itself, and on the connections

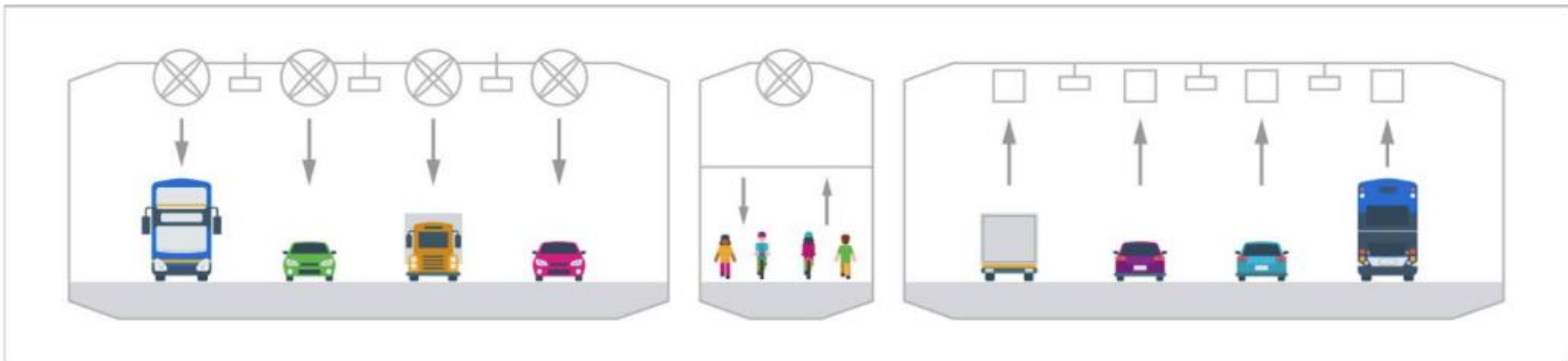
# Consultations – Hwy 99 Tunnel Program



# Fraser River Tunnel Project Design Features

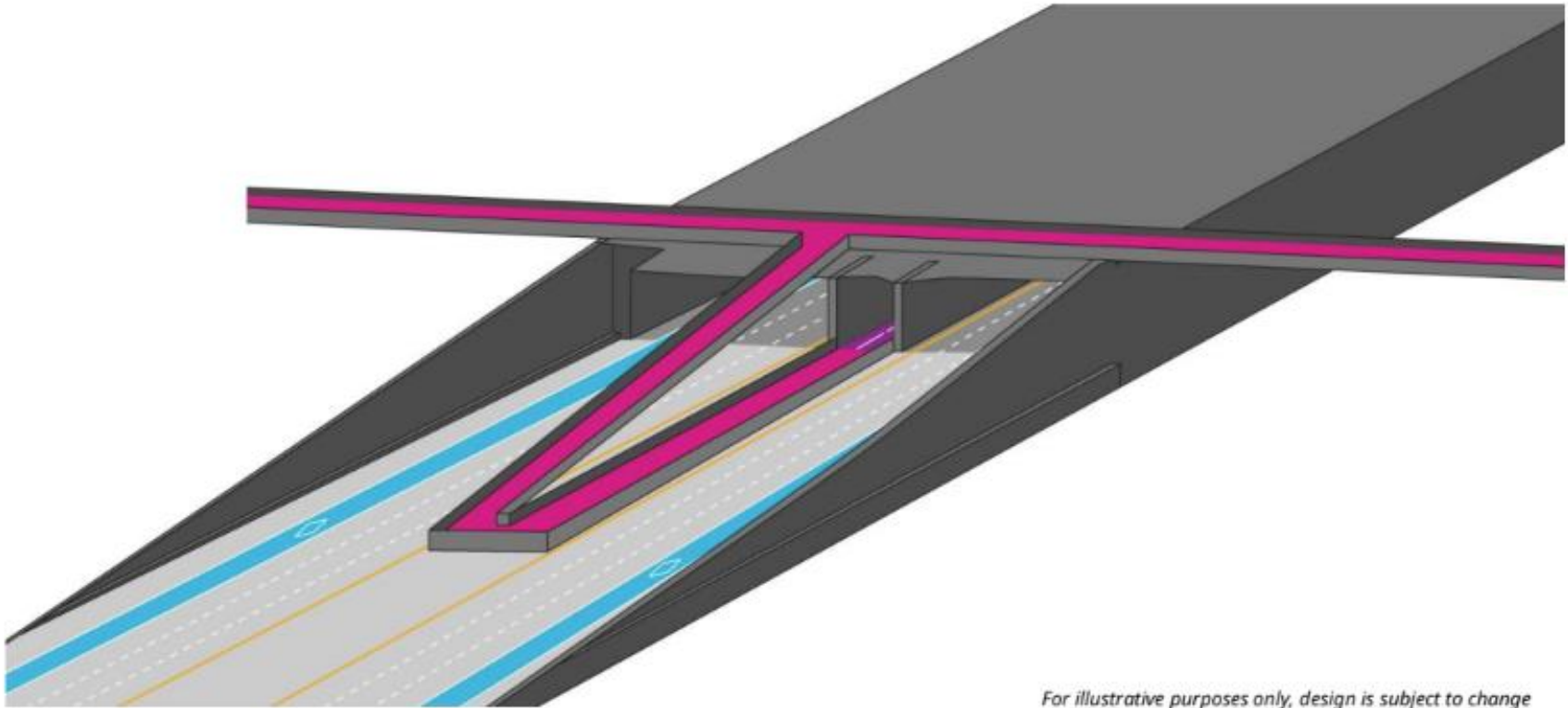
- Management of grades
- Separate ventilation system
- Physical separation from vehicle corridor
- Delineation of traffic in different directions
- Lighting
- Emergency call box
- CCTV
- AT tube also serves as emergency egress from the tunnel (centre alignment)

# Fraser River Tunnel Project Tunnel Cross-section



*For illustrative purposes only, design is subject to change*

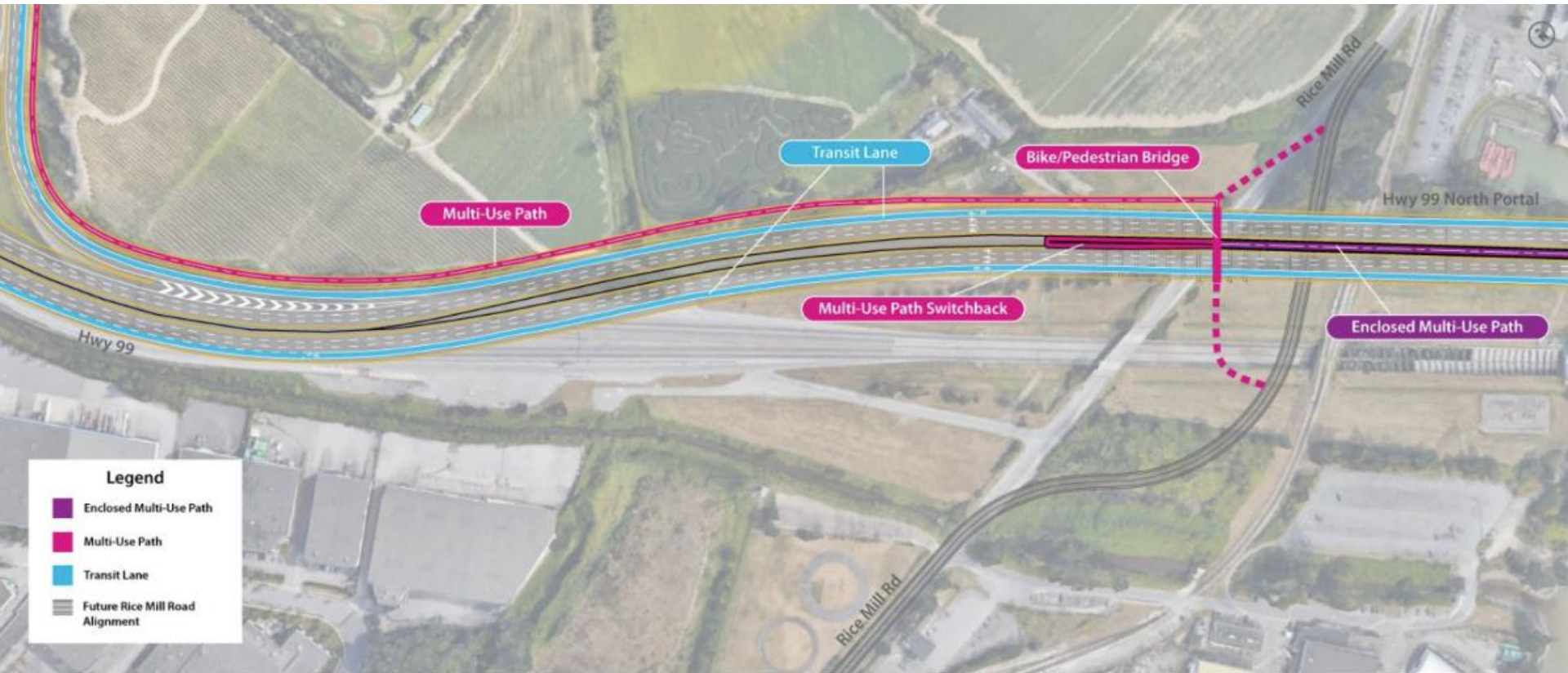
# Fraser River Tunnel Project North Portal - Concept



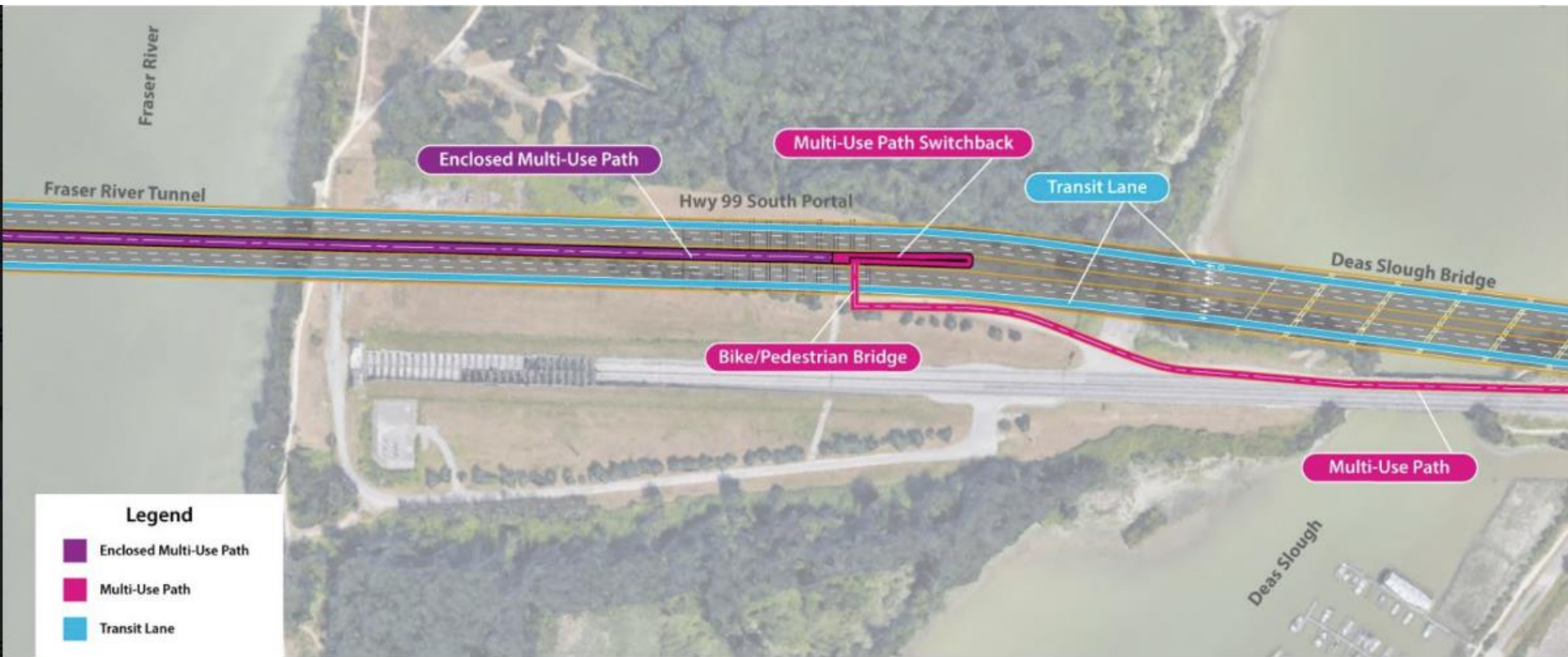
*For illustrative purposes only, design is subject to change*



# Fraser River Tunnel Project Proposed Richmond Connections

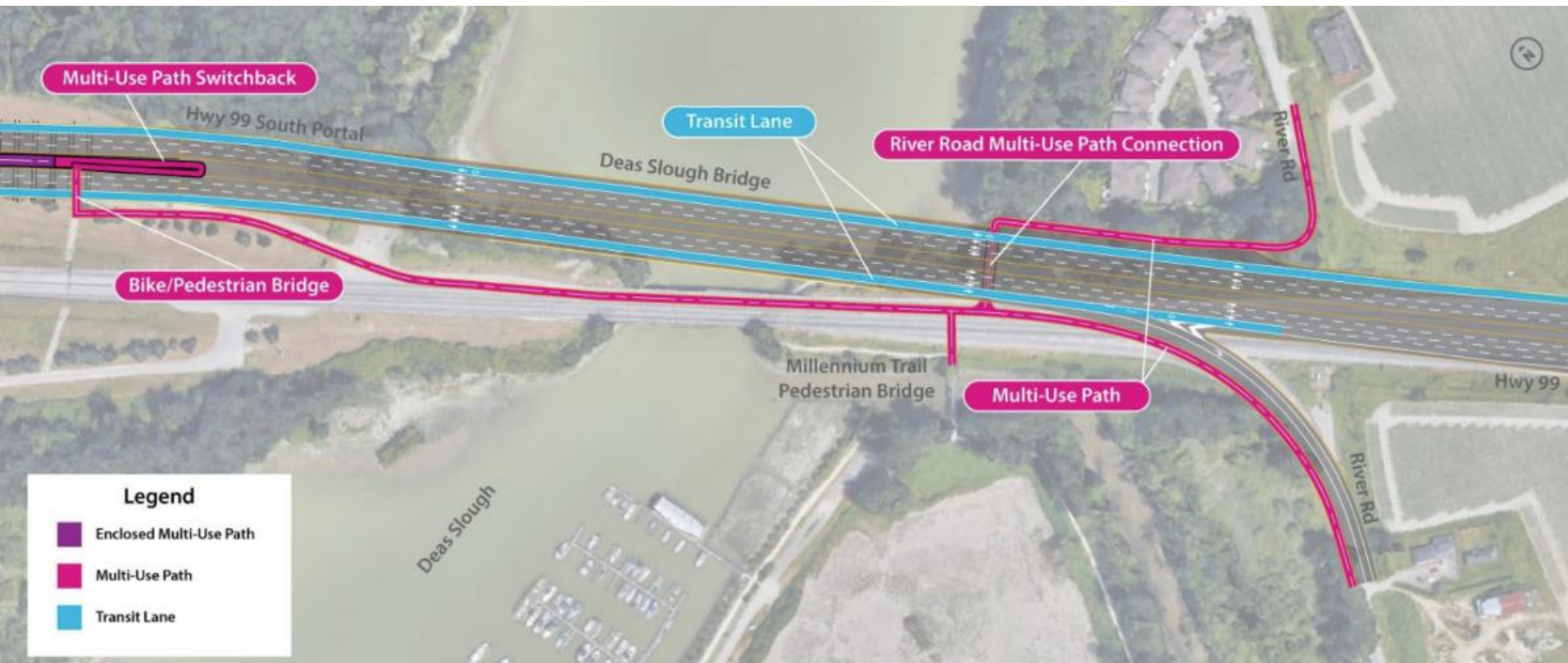


# Fraser River Tunnel Project Proposed Deas Island Connections

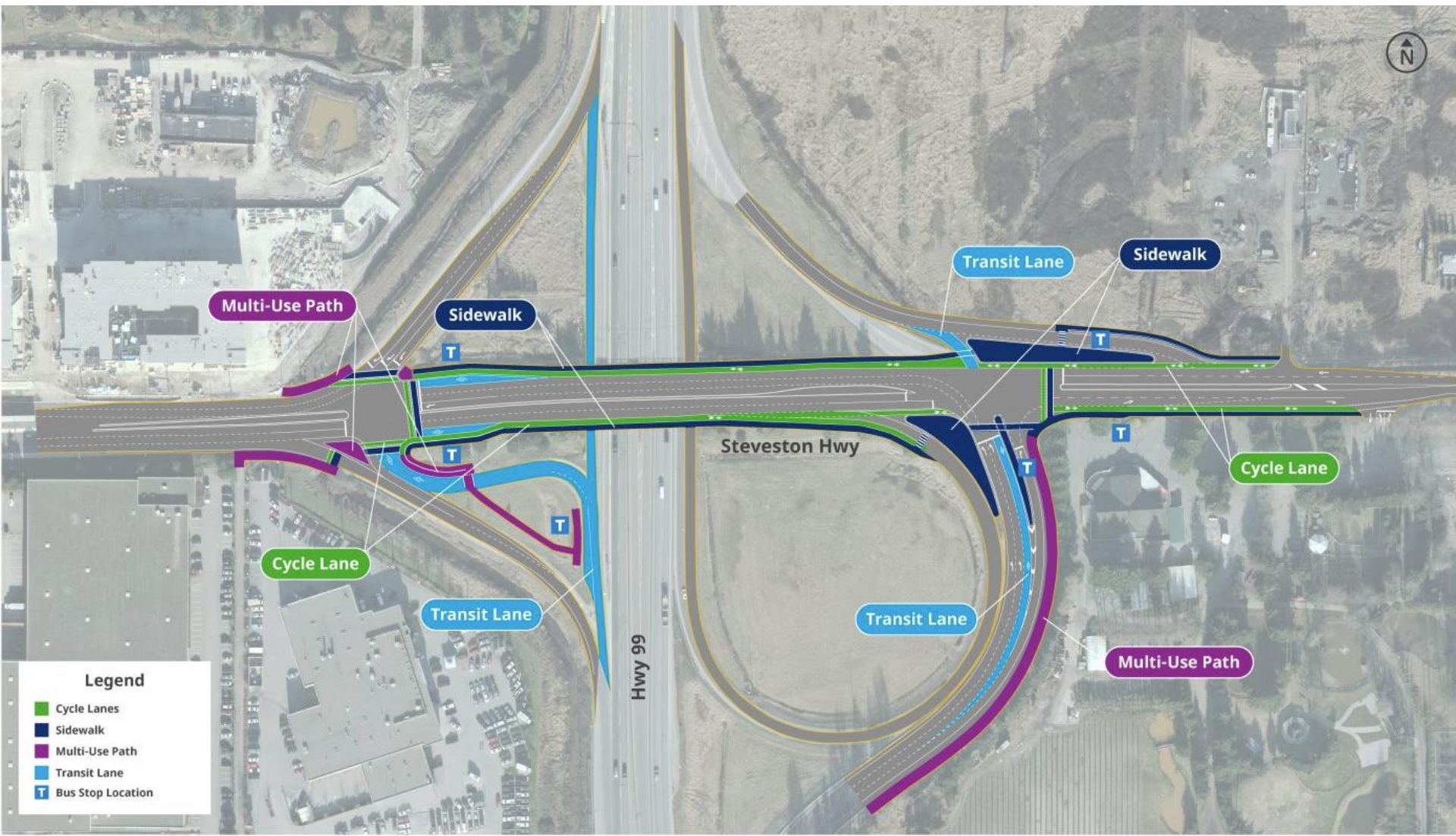




# Fraser River Tunnel Project Proposed Delta Connections



# Consultations – Steveston Interchange



# Consultations – CVG Closure

- The Central Valley Greenway was closed for an extended period of time due to a Worksafe ruling following a building collapse.
- A follow up meeting was held with CoV staff
- Staff agreed that the response was inadequate
- Take-aways
  - There is no classification system for bikeways, similar to that for roadways (arterials, local streets)
  - There is no standing policy on what to do following an event of this type (eg outside the City's control)
  - There was unclear responsibility (who ordered the closure, who would respond, no budget)
  - There was a shifting timeline

# Communications

- Follow up meetings held with several councillors and PB commissioners following our letters of congratulations. Lots of interest in the potential of Greenway development on the East Side

# Breakout Rooms

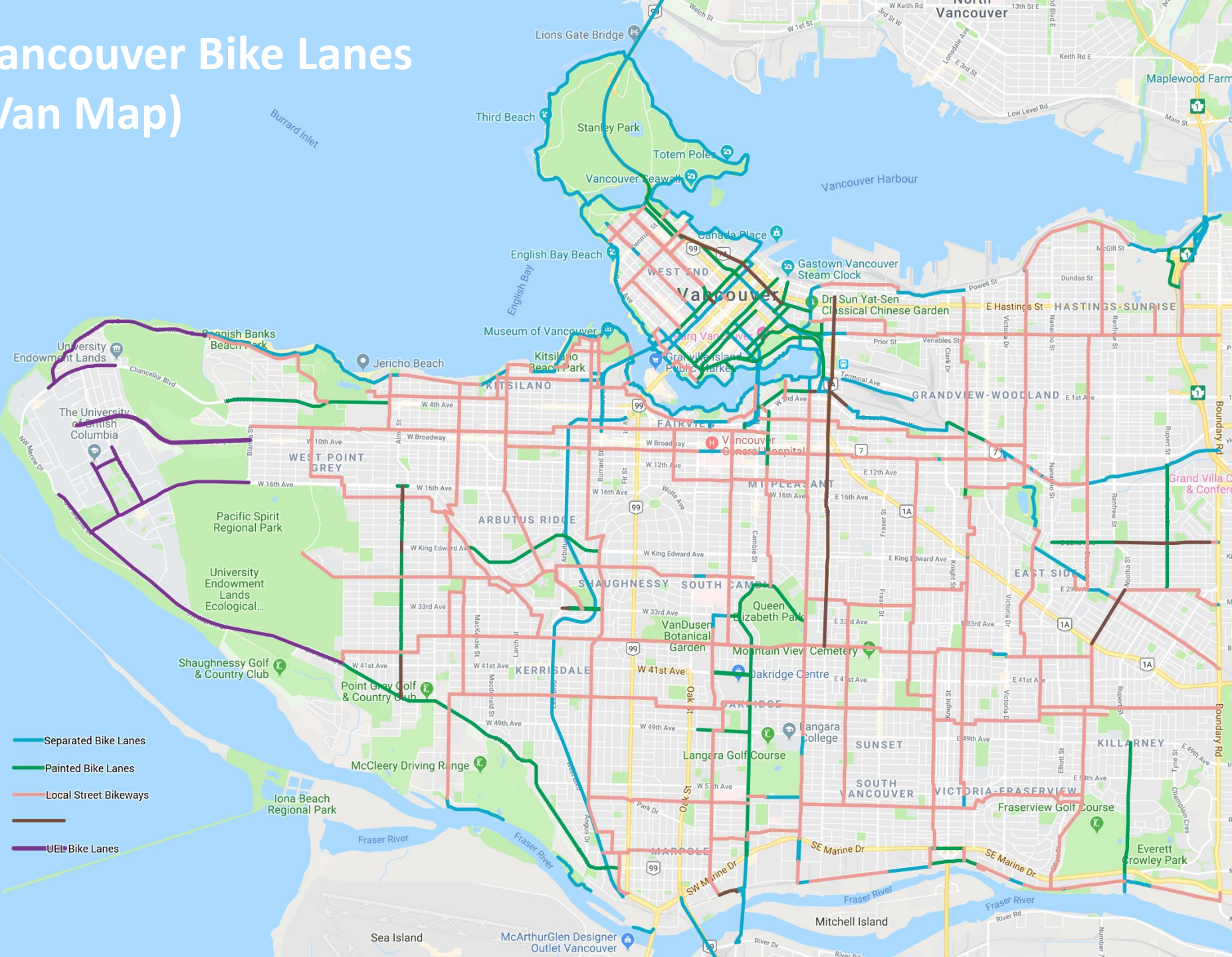
- We have set up several Breakout Rooms so that our working groups can continue with smaller group discussions.
- Each will have a moderator/leader. The rooms will be open for 30 minutes.
- Please select which one you would like to go to
  - Cycling in Parks (Lisa)
  - General Discussion (Jeff)



# Appendices

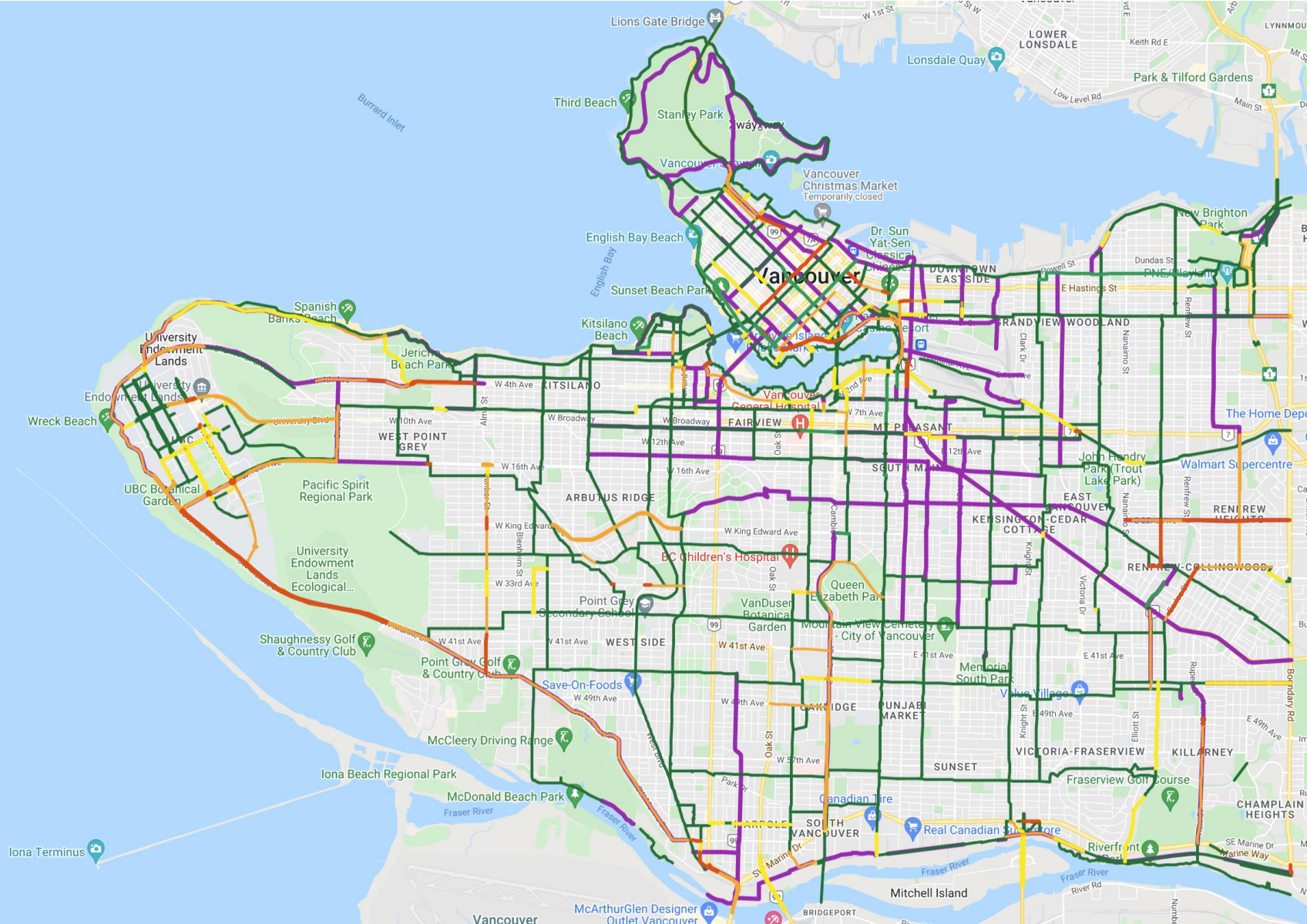


# Vancouver Bike Lanes (Van Map)



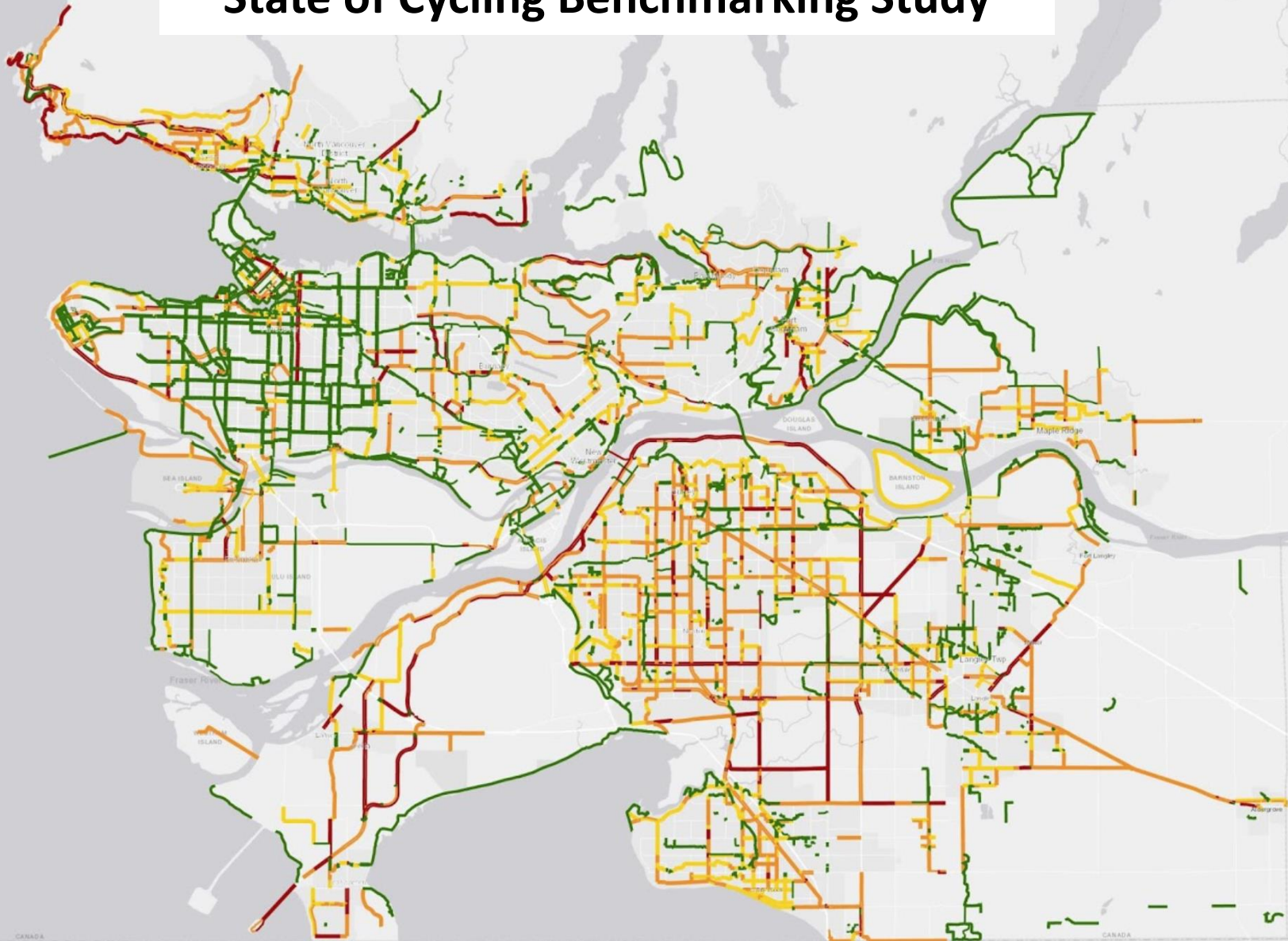


# Prototype Gap Map (Vancouver/UBC) with SoC Route Data (May 2022)



# Regional Bikeway Map

## State of Cycling Benchmarking Study





# CoV Cycling Network Improvement Budget

## 5-Year Cycling Network: Additions & Upgrades 2018-2022 **Added Nov 2017**

Detailed alignment and timing subject to change.

The aspiration for new routes and route upgrades is All Ages & Abilities (AAA). However, this may not always be achievable in the near term.

Upgrades can range from a series of small spot improvements to more significant changes.

Some projects fall on land outside City jurisdiction (e.g. Port, Park Board) and are subject to outside approval.

Not shown: minor additions and improvements through redevelopment and road work.

-  Planned Route
-  Planned Upgrade
-  AAA Network
-  Protected Bike Lane
-  Local Street Bikeway
-  Painted Bike Lane
-  Shared Use Lane

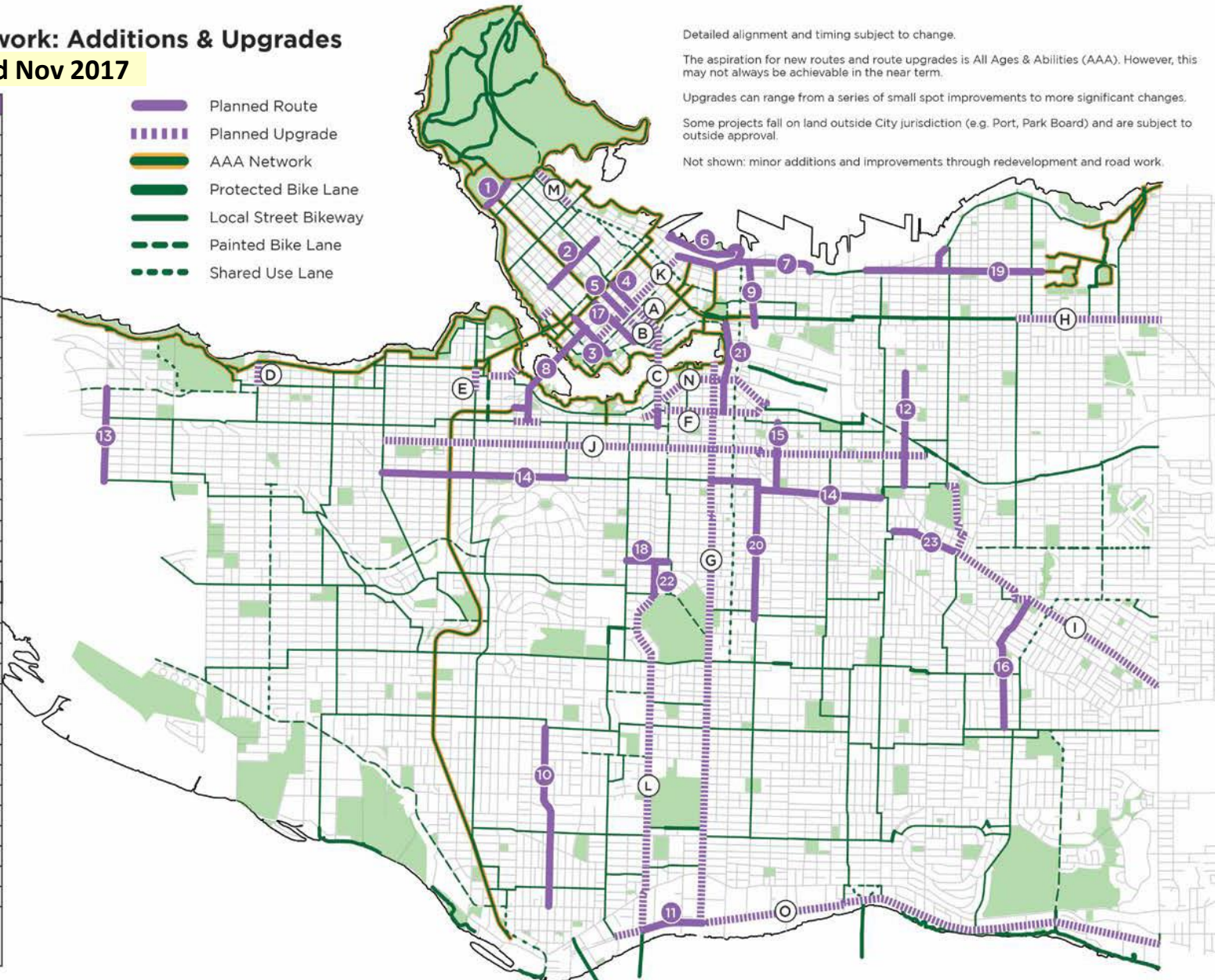
### Planned Routes

1	Park Lane*
2	Bute
3	Drake
4	Smithe
5	Nelson
6	West Waterfront Road**
7	Water-Alexander-Powell
8	Granville Bridge
9	Gore
10	Hudson
11	Kent
12	Commercial
13	Blanca
14	14th Ave
15	St. George Rainway
16	Duchess-Wales*
17	Helmcken
18	King Edward
19	Pandora-Semlin
20	Prince Edward
21	Quebec
22	Cambie
23	Stainsbury

### Planned Upgrades

A	Smithe
B	Nelson
C	Cambie Bridge
D	Highbury
E	Cypress
F	5th Ave
G	Ontario
H	Adanac
I	BC Parkway
J	10th Ave
K	Richards
L	Cambie
M	Georgia
N	1st Ave
O	Kent

\* Park Board jurisdiction  
 \*\* Port Authority jurisdiction  
 Number/Letter sequence does not imply priority





# CoV Cycling Map – Fall 2021 Update



**Protected Bike Lane**  
People cycling are protected from motor vehicles by physical barriers such as planters, curbs, or bollards; also includes off-street paths

**Local Street Bikeway**  
People cycling share the roadway with motor vehicles on a relatively quiet neighbourhood street

**Painted Bike Lane**  
People cycling have a dedicated painted lane, typically between the curb or parking lane and a driving lane

**Shared Use Lane**  
People cycling share a lane with vehicles on a busy street; these lanes fill network gaps but are not comfortable for most

**AAA Network**  
The most comfortable parts of the network are designated as All-Ages-and-Abilities (AAA) which are emphasized by the yellow highlighted routes. The AAA Network is a connected series of mostly protected bike lanes and some local street bikeways with lower traffic volumes.

- Map Symbols**
- Moderate Uphill Route
  - Steep Uphill Route
  - One Way Bike Route
  - Mobi Station Zone (boundary contains all public bike share stations, including Downtown & Stanley Park)
  - SkyTrain Station / Bus Loop
  - Bike Parkade
  - Train Station
  - Bus Station
  - SeaBus
  - Passenger Ferry
  - Hospital
  - Community Centre
  - School

**Pavement Markings**

**Bicycle**  
Indicates a bicycle route or lane

**Special Reserved Lane**  
Indicates a reserved lane for the devices noted on associated signs or pavement markings. When combined with a bicycle this symbol indicates a dedicated bicycle lane. People cycling in the City of Vancouver are allowed to ride in these lanes.

**Narrow (Shared Roadway)**  
Indicates a roadway shared with motor vehicles. The arrow shows where a people cycling should generally position themselves

**Bicycle with Arrow**  
Indicates the bike route direction is changing

**Bicycle Pathway**  
Indicates an off-street cycling pathway

**Shared Pathway**  
Indicates an off-street pathway shared by people walking and cycling

**Pavement Markings (cont.)**

**Crosswalk (Elephants Feet)**  
Identifies the area where people biking may be crossing to provide wayfinding along protected bike lanes at intersections.

**Green Point**  
Highlights potential conflict areas with motor vehicles. Commonly used along protected bike lanes at intersections and driveways.

**Bicycle Box**  
Indicates where people cycling should position themselves at a red signal, allowing them to turn left, right, or go straight in advance of other vehicles.

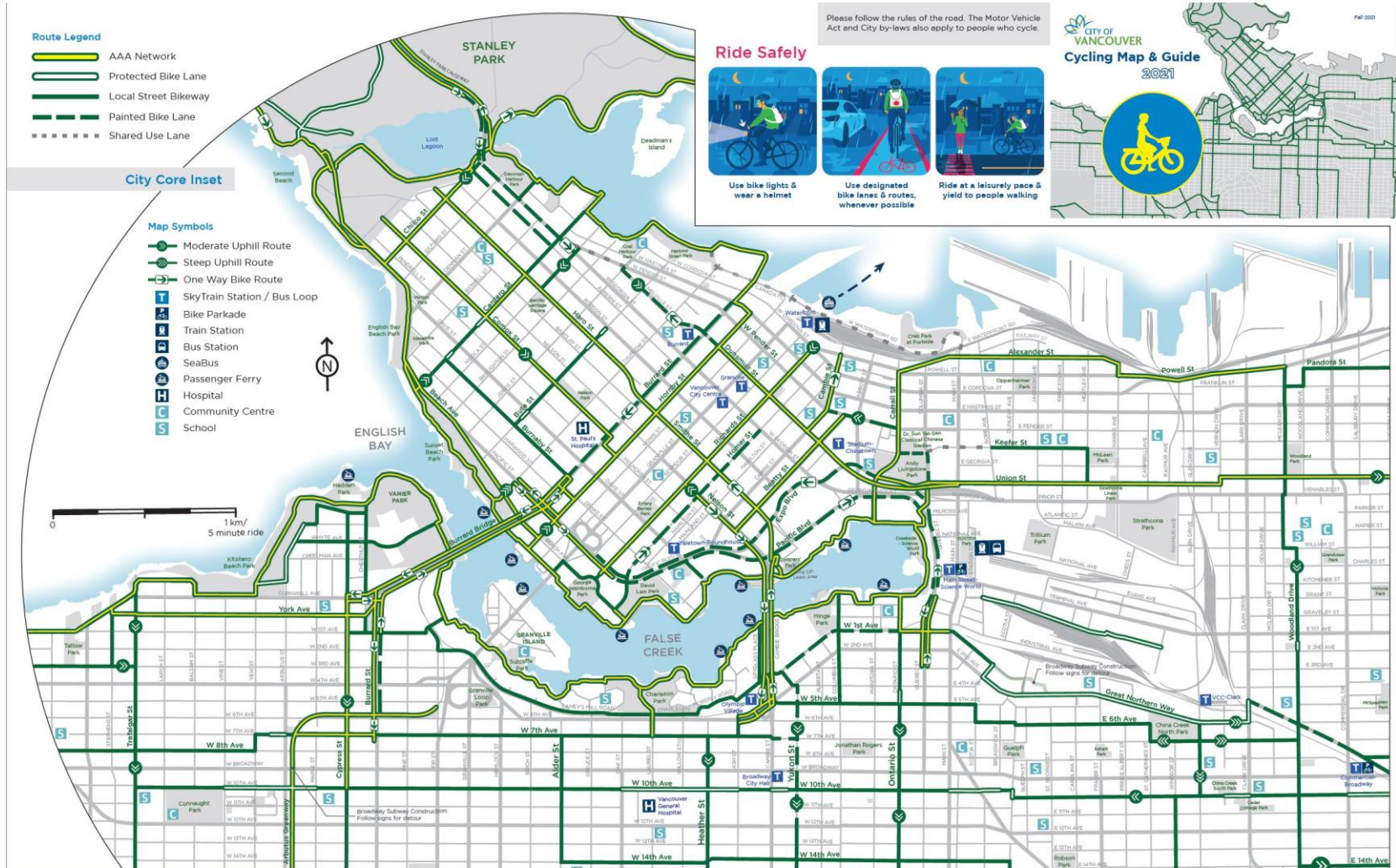
**Bicycle Signal**  
Dedicated signal for people cycling

**Turning Left Using a Bike Box**  
1) Go straight through the intersection when the signal is green and wait in the turn box  
2) Proceed left across the intersection when the signal changes

Disclaimer of responsibility: This map is produced as a guide to cycling routes in the City of Vancouver. The City, its employees, officers, directors and representatives do not guarantee the accuracy of any information contained therein nor warrant the safety of any route, highway, road, street, designated cycling route or other shown in the map or information.  
© 2021 City of Vancouver



# CoV Cycling Map – Fall 2021 Update



- Route Legend**
- AAA Network
  - Protected Bike Lane
  - Local Street Bikeway
  - Painted Bike Lane
  - Shared Use Lane

**City Core Inset**

- Map Symbols**
- Moderate Uphill Route
  - Steep Uphill Route
  - One Way Bike Route
  - SkyTrain Station / Bus Loop
  - Bike Parkade
  - Train Station
  - Bus Station
  - SeaBus
  - Passenger Ferry
  - Hospital
  - Community Centre
  - School

Please follow the rules of the road. The Motor Vehicle Act and City by-laws also apply to people who cycle.

**Ride Safely**



- Use bike lights & wear a helmet
- Use designated bike lanes & routes, whenever possible
- Ride at a leisurely pace & yield to people walking



**Mobi by Show Go is Vancouver's public bike share system**

- Users can unlock a bike at any station, ride, and return it to any station.
- Users can take an unlimited number of trips during their membership period.
- Most of the stations have free Wi-Fi.

**For more info and current station locations:**

- Visit [www.mobibikes.ca](http://www.mobibikes.ca)
- Download the "Mobi by Show Go" App
- Call 778-655-1800

Check out the Mobi Station Zone on the Main Map. The boundary contains all public bike share stations, including Downtown and Stanley Park.

**Walk + Bike + Roll: Getting Around the Vancouver Way**

By walking, cycling, rolling, and taking transit more often, you can:

- Improve your personal health
- Improve the health of your environment
- Alleviate congestion on our streets

[vancouver.ca/walkbikeroll](http://vancouver.ca/walkbikeroll)

**For More Information from the City of Vancouver**

Phone/TTY: 3-1-1/7-1-1

Web: [vancouver.ca/cycling](http://vancouver.ca/cycling)

Download the cycling map [vancouver.ca/cycling](http://vancouver.ca/cycling)

Bike network inquiries & small upgrade projects: [bikeupgrades@vancouver.ca](mailto:bikeupgrades@vancouver.ca)

Report garbage, graffiti, and much more with the City's [VanConnect](http://vancouver.ca/vanconnect) app [vancouver.ca/vanconnect](http://vancouver.ca/vanconnect)

**Micro Mobility: Where can I ride?**

	Major Road	Local Road	Protected Bike Lane or Pathway	Sidewalk
Bicycle	✓	✓	✓	x
E-Bike*	✓	✓	✓	x
Moped	✓	✓	x	x
Skateboard**	x	x	x	✓
Hoverboard**	x	x	x	✓
E-Skateboard**	x	x	x	x

\*With the exception of medical wheelchairs, Vancouver bylaws prohibit the use of motorized devices (e-bikes and e-scooters) on the seawall.  
\*\*Curry hoverboards and e-skateboards may not be operated on roads or sidewalks as per the BC Motor Vehicle Act.

**Register your Bike to Reduce Theft**

It's free and takes only 5 minutes. In the event your bike goes missing, you can activate the police and community to help recover your bike.

Always report a missing bike with police. Better reporting means more returned bikes and helps law enforcement to prioritize their efforts.

[www.projects29.com](http://www.projects29.com)

**Bikes on Transit**

Public transit can help you and your bike go further. You can take your bike on the bus, SkyTrain, SeaBus, and WestCoast Express. Electric and folding bikes are also allowed on the system now (with some restrictions).

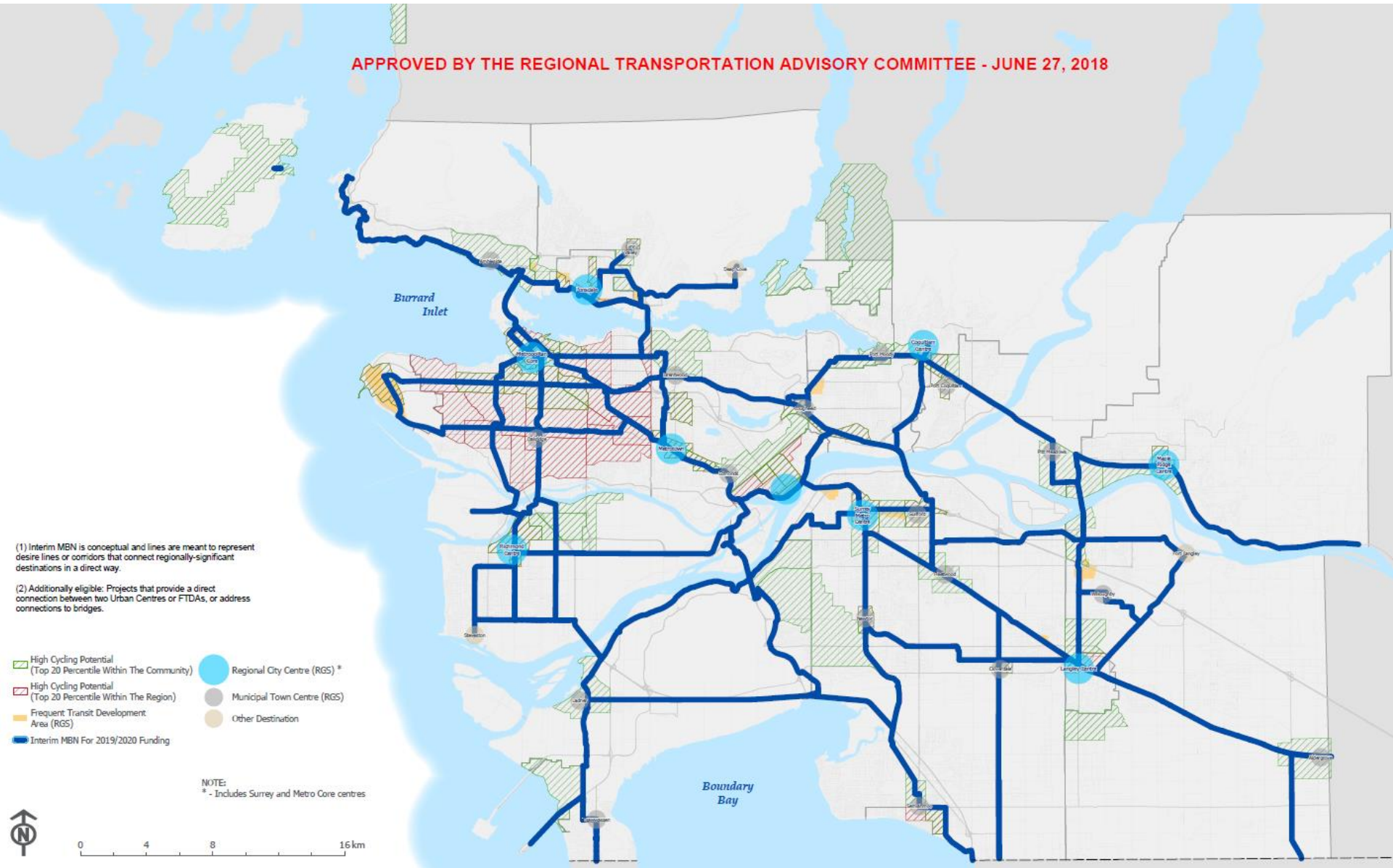
Bike Parkades are indoor facilities for registered Compass customers and are available in Vancouver at Main Street-Science World, King Edward, Commercial-Broadway, and Joyce-Collingwood.

For more information visit [www.translink.ca](http://www.translink.ca)



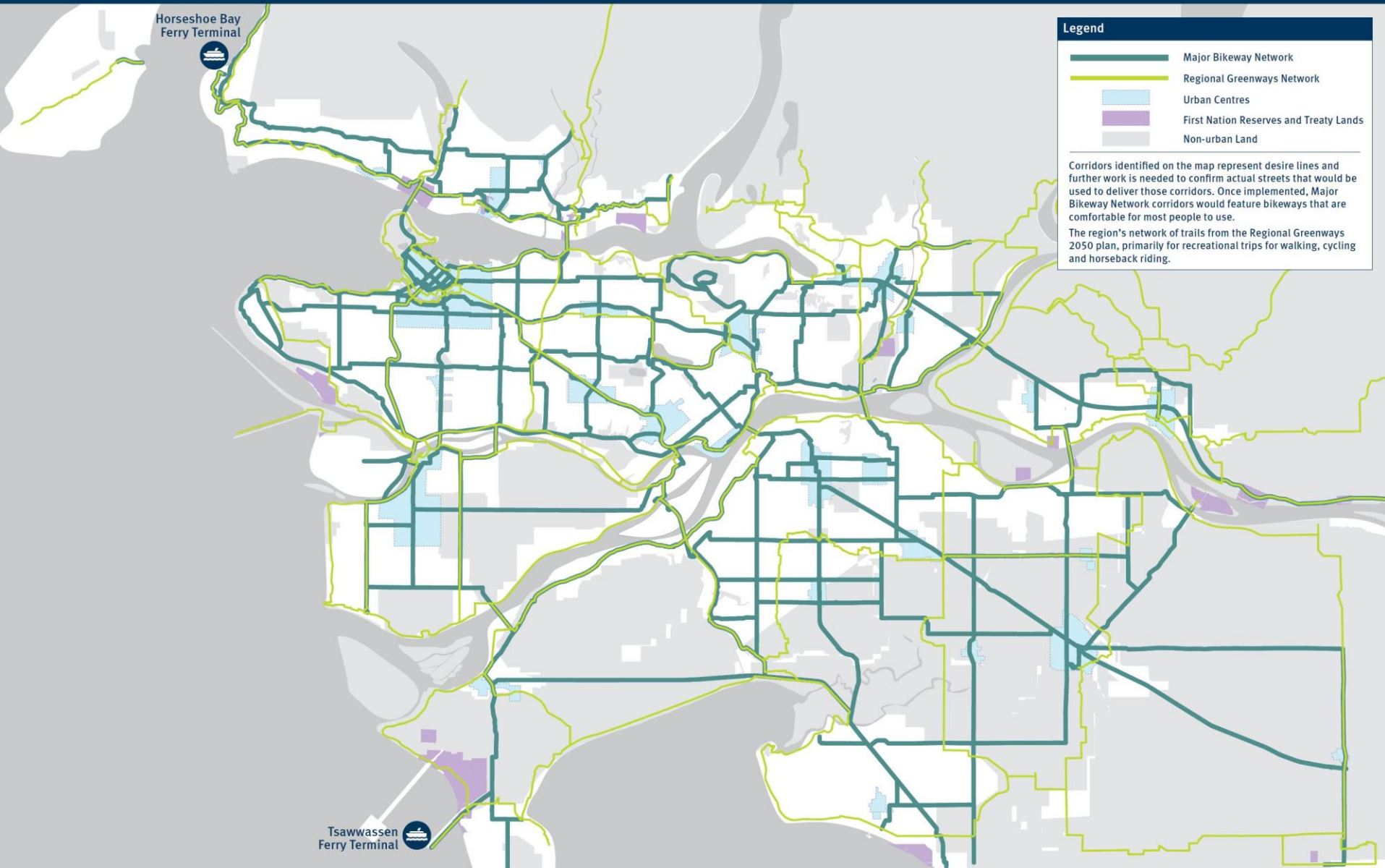
# Translink Major Bikeway Network (MBN)

APPROVED BY THE REGIONAL TRANSPORTATION ADVISORY COMMITTEE - JUNE 27, 2018



# Translink Major Bikeway Network October 2021

## Transport 2050 Regional Cycling Network

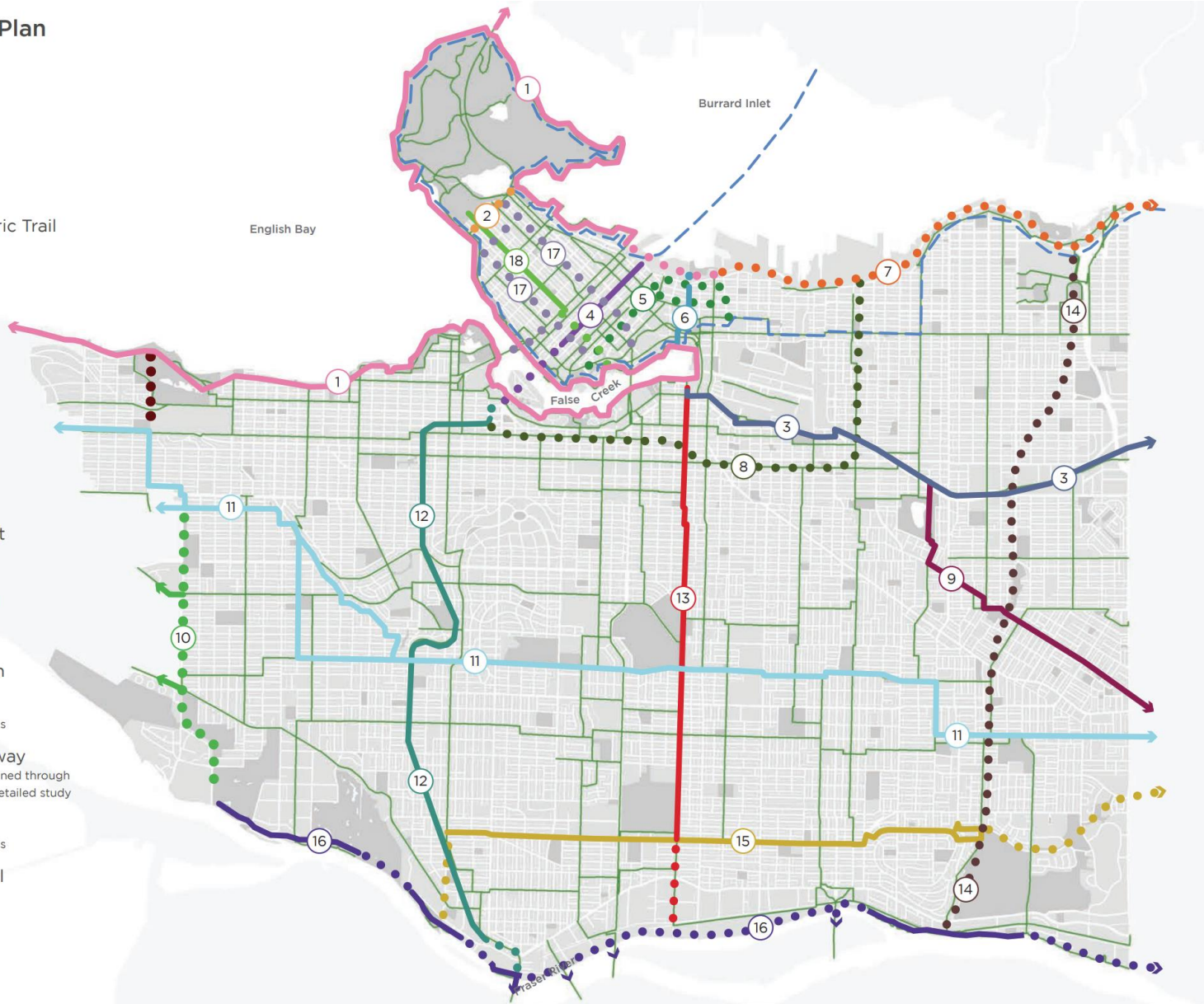




# Vancouver Greenways Plan

## City Greenways Plan

- ① Seaside
- ② Lagoon
- ③ Central Valley
- ④ Granville
- ⑤ Downtown Historic Trail
- ⑥ Carrall
- ⑦ Portside
- ⑧ Midtown Way
- ⑨ Parkway
- ⑩ Spirit Trail
- ⑪ Ridgeway
- ⑫ Arbutus
- ⑬ Ontario
- ⑭ Eastside Crosscut
- ⑮ Masumi Mitsui
- ⑯ Fraser River Trail
- ⑰ City Centre
- ⑱ Comox-Helmcken
- Greenway  
Constructed or in progress
- Proposed Greenway  
Exact route to be determined through public consultation and detailed study
- Bikeway  
Constructed or in progress
- - - TransCanada Trail



# Metro Vancouver Greenway Plan

