

# Vancouver-UBC Local Committee

February 16<sup>th</sup>, 2021

Web Meeting via Zoom

# For a better web meeting:

- We may have many people online, so please mute your phone or microphone when you are not speaking
- Ensure your name is displayed so that we know who you are
- We have a volunteer co host who will watch the text chat queue and help make sure people can ask questions
- Take advantage of the text chat function; ask questions, raise your hand to speak, or provide feedback on a topic. This gives us a text log for the preparation of our minutes. Test it out before 6:30 pm by letting us know you are online, just enter your first name. This will help us with the minutes.
- If you are not logged in to the Zoom meeting you won't see the presentation, but you can access it on our wiki, [here](#) and follow along.
- You can either use computer audio (microphone and speaker), or dial in
- The dial in number is +1 778 907 2071
- The Meeting ID is 896 4063 1700; the one-time password is 969221

# Meeting Agenda

- Web Meeting Best Practices
- Welcome, introductions, and announcements
- Updates from Working Group leads
- Consultations Update
- HUB Cycling Regional Advisory Committee (RAC) Update
- Correspondence Update

# Welcome and Introductions

- Welcome to new attendees
- Anything to add to the agenda?
- Minutes from January
- Announcements:
  - Please provide feedback online to the City of Vancouver on how the installed diversions are working on Ontario, Heather, Charles. Details in the meeting agenda.
  - Any other announcements?

# Updates from Working Group Leads

- Assessment Rides – Jeff, Anthony, Philippe
- Cycling in Parks – Lisa
- Arbutus Greenway – Stan
- Cargo Bikes and Freight – Sam
- Broadway Subway – Jeff
- East Van Greenway – Clark

# Consultations – Projects Underway

- Richards St – trees planted; construction now up to Helmcken; plan is to reach Pacific by end of the summer; look for a CoV celebration/media event in September
- Beach Ave Bikeway – Signal changes, centre lines, edge lines, painted crosswalks are all in progress, subject to weather and crew availability. Consider holding a Local Committee celebration/media event when appropriate
- 16<sup>th</sup> Ave MUP improvements at UBC – MoTI meetings; issues with roadway bike lane signage and parking; safety of MUP at night. Improvements implemented.

# Consultations – 16<sup>th</sup> Ave near UBC



# Consultations – MoTI Projects

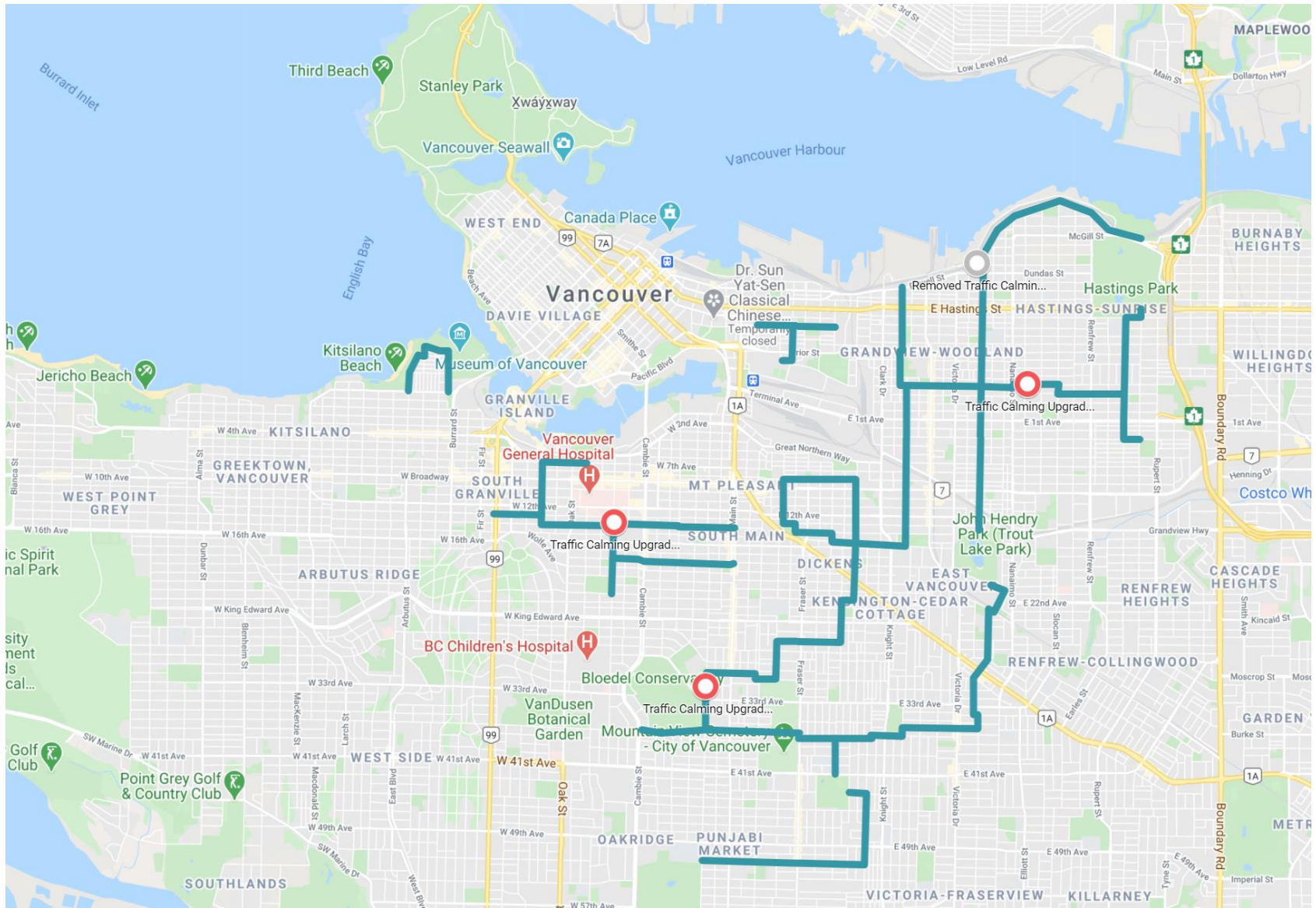
- NW Marine Drive MUP to UBC – MoTI meetings; issues with park, park trail access, different travel speeds for different types of users. Project scope is design only.
- Lions Gate Bridge and Causeway improvements – MoTI meetings; concrete barriers at north end, signage along the causeway; consistency with Park Board plans



# Consultations – Projects Underway

- Granville Connector Design Contract being awarded, project kick off coming up shortly. Timing for Drake, removal of loops, bike lane on Pacific are all being discussed (moving target)
- 30 km/hr Neighbourhood Reduced Speed Pilot – Grandview/Woodlands (bounded by 1<sup>st</sup>, Clark, Commercial, and Grandview Hwy); signage on every block and at gateways, monitoring program
- Slow Streets – Feedback requested on how the installed diversions are working for traffic calming. As there is no formal engagement program, the CoV will rely on feedback received. Make your voice heard! [CoV Survey](#)

# Consultations – Slow Streets and CoV Feedback on Traffic Calming Diversions



# Consultations – School Streets Pilot

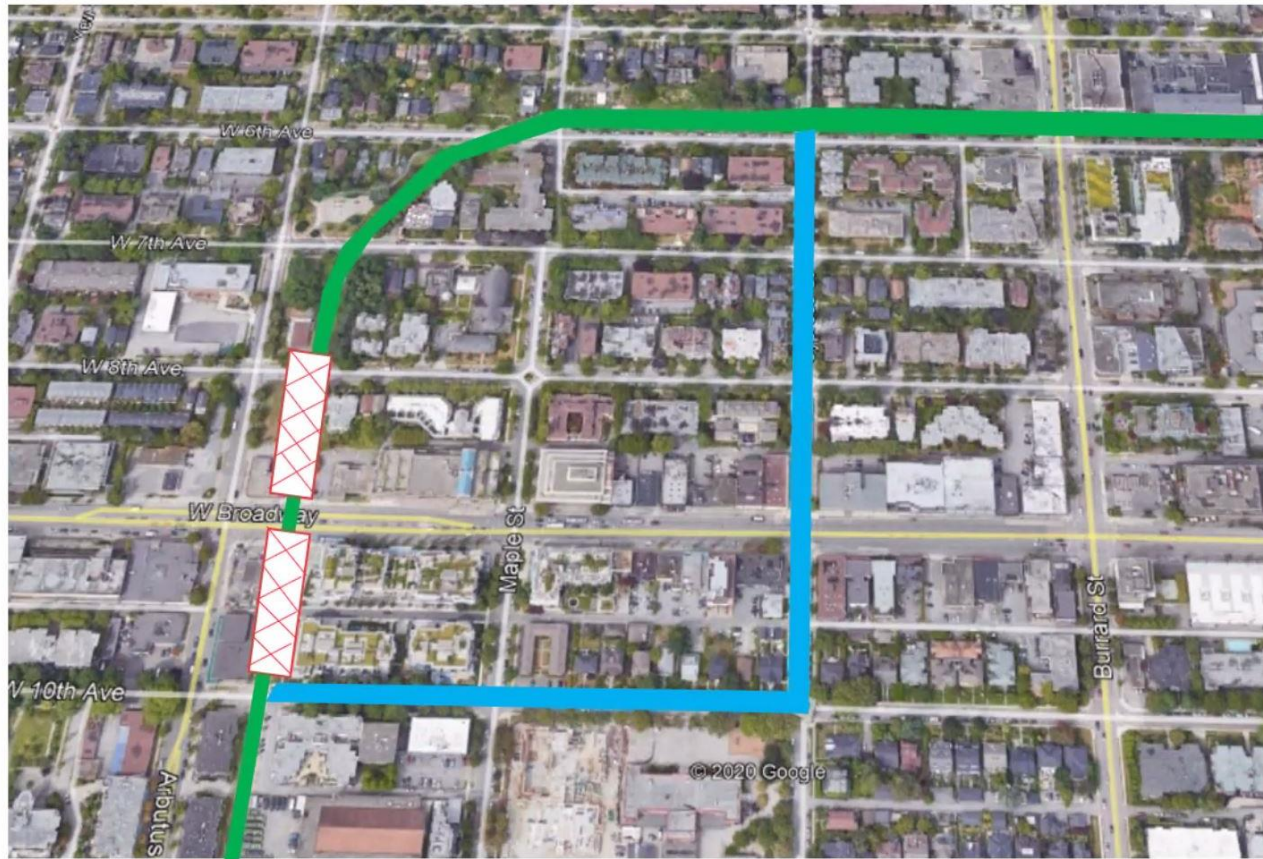
- Three schools have signed up, out of five that were under consideration
- Program will include barricades to prevent vehicle movements in front of each school, during pick up and drop off times (for 30 minutes each)
- Barricades will be attended by volunteers
- Street closures will be permeable for walking and cycling
- Program includes monitoring traffic impacts before and after pilot, including air quality
- Program will include AT promotion
- Pilots will run April 15 to the end of the school year

# Consultations – CoV Transportation Demand Management Program Update

- Report cards being developed
- Employer resources being developed
- Walking School Bus pilot under development
- Sunday Streets Program being scoped
- CoV ebike rebates under discussion

# Consultations – Broadway Subway

## Arbutus Greenway Detour



# Consultations – Broadway Subway

## Central Valley Greenway Detour



# Consultations – 10<sup>th</sup> Ave Improvements (Feb 16<sup>th</sup> – late summer)



# Consultations – BC Parkway Construction at Nanaimo Station

www.invarion.com



**Date:** 2021-02-08 **Author:** Michelle LaPierre @ 604-830-7412 **Project:** Nanaimo Bus Station Upgrades  
**BCCSA TCP#:** SN1058119 **DWG. #:** 002

**Comments:**  
 City of Vancouver  
 Job Description: Deficiencies to repair in manhole on BC Parkway Bike Path on Nanaimo St.  
 Closure Description: BC Parkway Bike Path closed. Cyclists to dismount and walk through the Plaza area.  
 TCP's to direct

**Date:** TDB  
**Hours:** 7:00am to 5:00pm  
 Pedestrian passage will not be affected

**CITY OF VANCOUVER TRAFFIC PLAN REVIEW**

ACCEPTED WITH RESTRICTIONS NOTED  
 ACCEPTED WITH RESTRICTIONS AND CONDITIONS NOTED

**RESTRICTIONS:**

**CONDITIONS:**

REVIEWED ONLY FOR GENERAL CONFORMANCE TO CITY OF VANCOUVER TRAFFIC REQUIREMENTS AND FOR GENERAL CONFORMANCE TO THE BRITISH COLUMBIA MINISTRY OF TRANSPORTATION AND INFRASTRUCTURE'S 2020 TRAFFIC CONTROL MANUAL FOR WORK ON ROADWAYS. REVIEW AND ACCEPTANCE OF TRAFFIC PLAN BY THE CITY OF VANCOUVER SHALL NOT RELIEVE THE CONTRACTOR OF ITS SOLE RESPONSIBILITY AND LIABILITY FOR THE PROPER IMPLEMENTATION OF THE TRAFFIC PLAN IN ACCORDANCE WITH ITS TERMS AND THE FOREGOING REQUIREMENTS. ACCEPTED TRAFFIC PLANS MAY BE USED FOR UP TO SIX MONTHS FROM THE DATE OF ACCEPTANCE. THE CONTRACTOR MUST APPLY FOR A NOISE BYLAW EXCEPTION PERMIT TO WORK OUTSIDE OF NOISE CONTROL BYLAW 6555 HOURS.

**REVIEWED BY:** Greg Nowak **DATE:** 2/8/2021

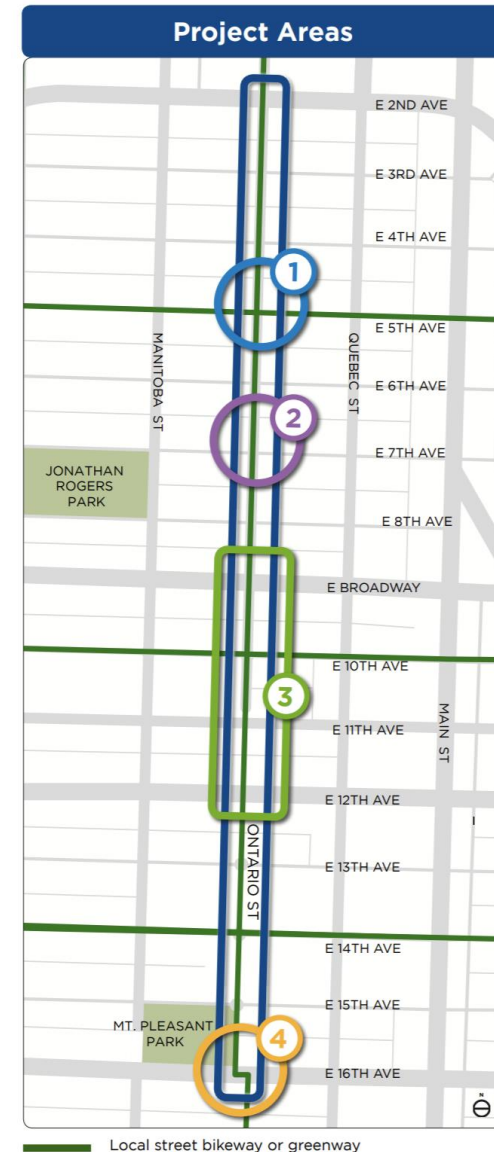


Legend	
	B-C-002
	B-R-101-2 Walk Bicycle symbol
	traffic controller stop
	Tubular
	Work Area

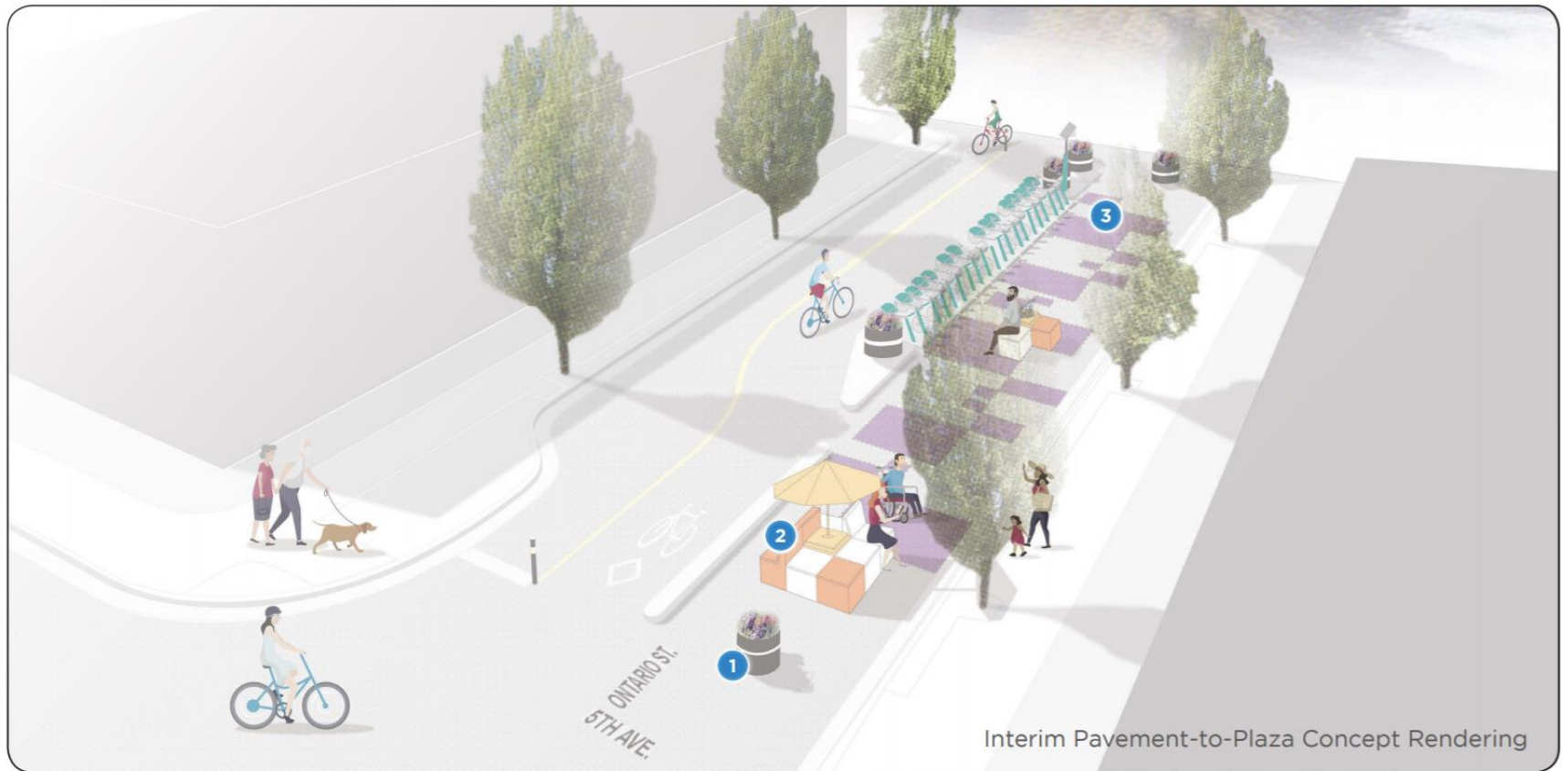


# Consultations – Ontario Bikeway Improvements starting now

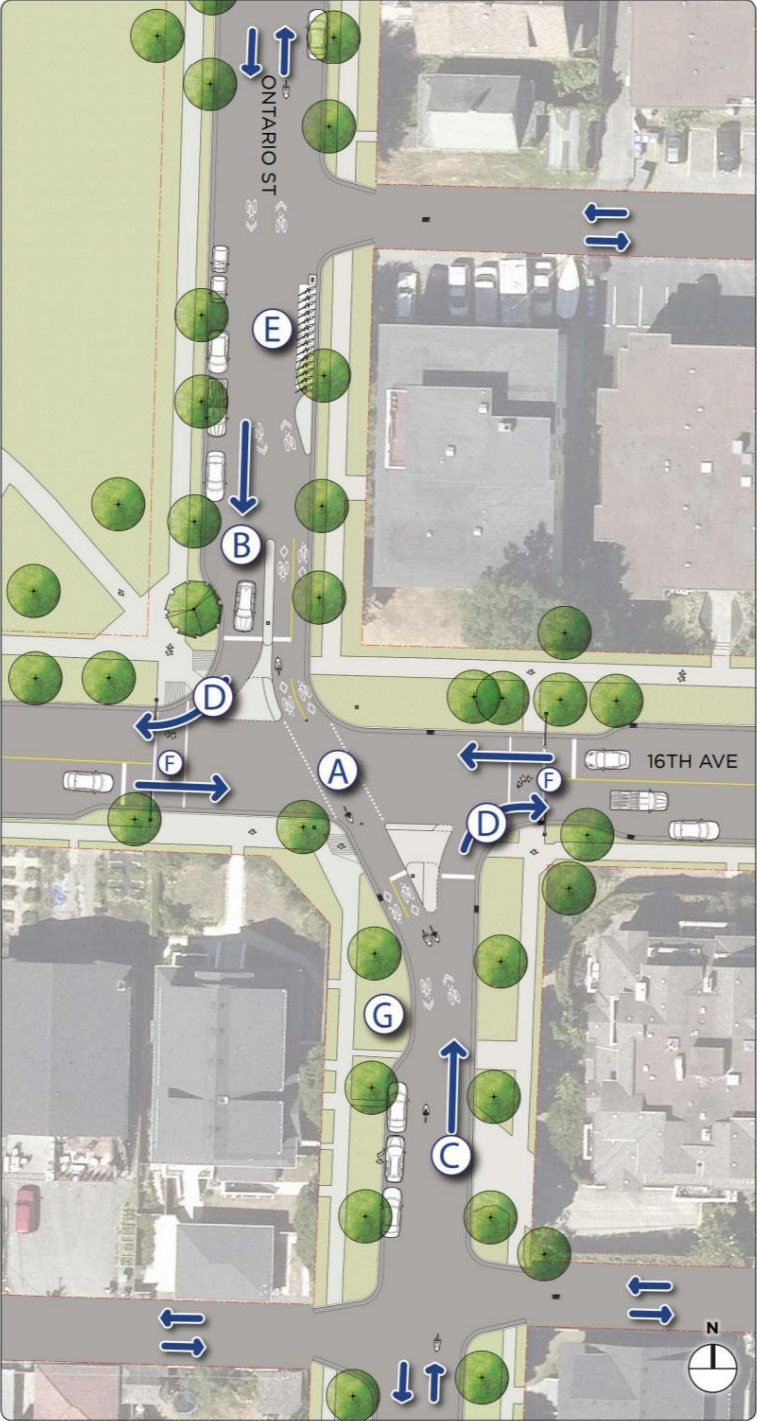
- The full project scope is from 2<sup>nd</sup> to Kent, but the immediate work is at locations #1, #2, and #4
- #1 and #2 have vehicle traffic 5 x the AAA standard, and poor stop sign compliance for all road users
- 5<sup>th</sup> - Traffic diversions (no vehicle through traffic) and a plaza
- 7<sup>th</sup> – Traffic diversions with converging one way for vehicles
- No design solution for #3 yet
- 16<sup>th</sup> – Traffic diversions, and realignment of the bikeway



# Consultations – Ontario Bikeway Improvements – 5<sup>th</sup> Ave Plaza Concept

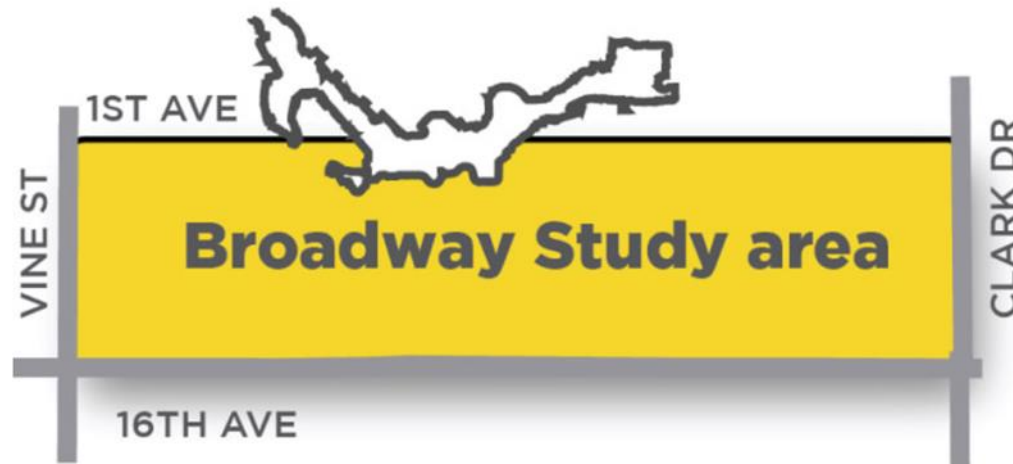


# Consultations – Ontario Bikeway Improvements at 16<sup>th</sup> Ave Intersection



# Consultations – Broadway Corridor

- The Broadway Corridor is the subject of a current City planning initiative. On February 16<sup>th</sup> 2021, the CoV released their Emerging Directions update. The Survey is open until March 31<sup>st</sup> 2021.
- <https://shapeyourcity.ca/broadway-plan>



# Consultations – Broadway Corridor

- This is not yet the plan. This is an interim report on work done to date, and where the plan is headed. Now is the time to provide feedback.
- “The Emerging Directions respond to the community needs identified through public and stakeholder engagement, technical work, and city-wide objectives, and seek to maximize the opportunities associated with the new Subway. They include policy directions for areas for growth and change, land use, affordable housing, job space, parks and public spaces, connections, Broadway as a Great Street, amenities, and sustainability.”

# Consultations – Broadway Corridor

## Some Observations:

- The Broadway Plan Guiding Principles highlight the importance of providing and supporting healthy transportation options and enhancing Broadway as a Great Street.
- The description of the new Great Street does not specifically reference any cycling facilities on Broadway itself. It does describe a greatly improved walking environment, and lots of other positive changes.
- There are multiple cross streets that will provide access to Broadway for people cycling, and discussion of bike storage, and access to the new subway stations, but no mention of travelling along Broadway by bicycle.

# Consultations – Broadway Corridor

- “The Broadway Area will have a dense network of bike routes such that everyone lives within a block or two of a bike route that is safe and comfortable for people of all ages and abilities. People cycling will also have safe cycling routes to connect them to key recreational, commercial and employment destinations, and to the new subway stations, and there will be an adequate amount of bike storage facilities at their destinations.”
- “All bike routes will be upgraded to meet the City’s AAA standards over the course of the plan.”

# Consultations – Broadway Corridor

## Emerging Cycling Network



### Legend

- Broadway Plan Study Area
- Existing Bike Route
- Future Bike Route
- Future Broadway Subway
- T Existing Station
- T Future Station
- Further work required to determine best connection to Station
- Further work required to determine Bike Route alignment

NOTE: All bike routes will be upgraded to meet the City's AAA standards over the course of the plan

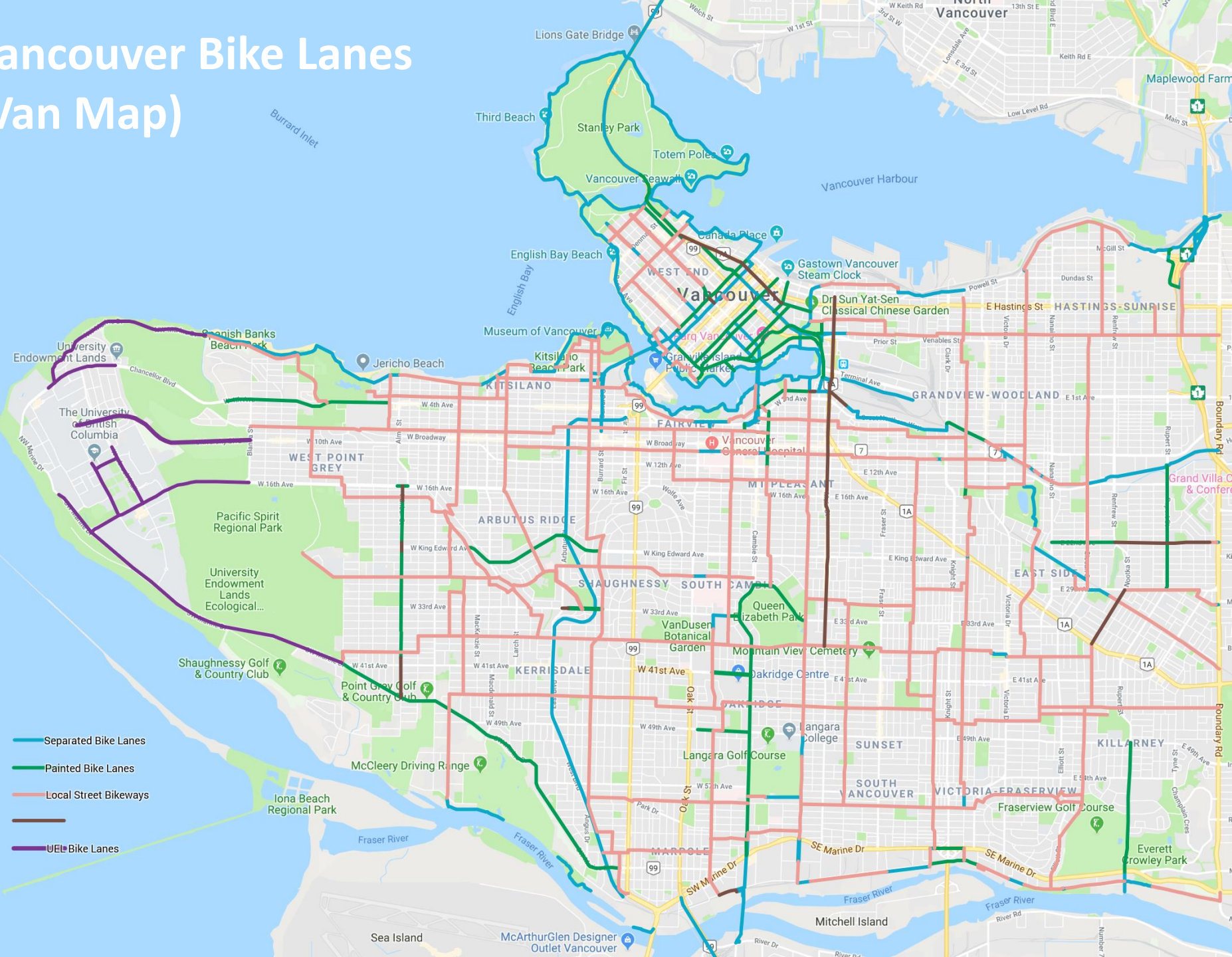
### What is a AAA cycling route?

All-Ages and Abilities (AAA) cycling routes are continuous sections of protected bike lanes or traffic calmed local streets with safe crossings at busy intersections. These routes provide a safe and low stress cycling experience for most people.



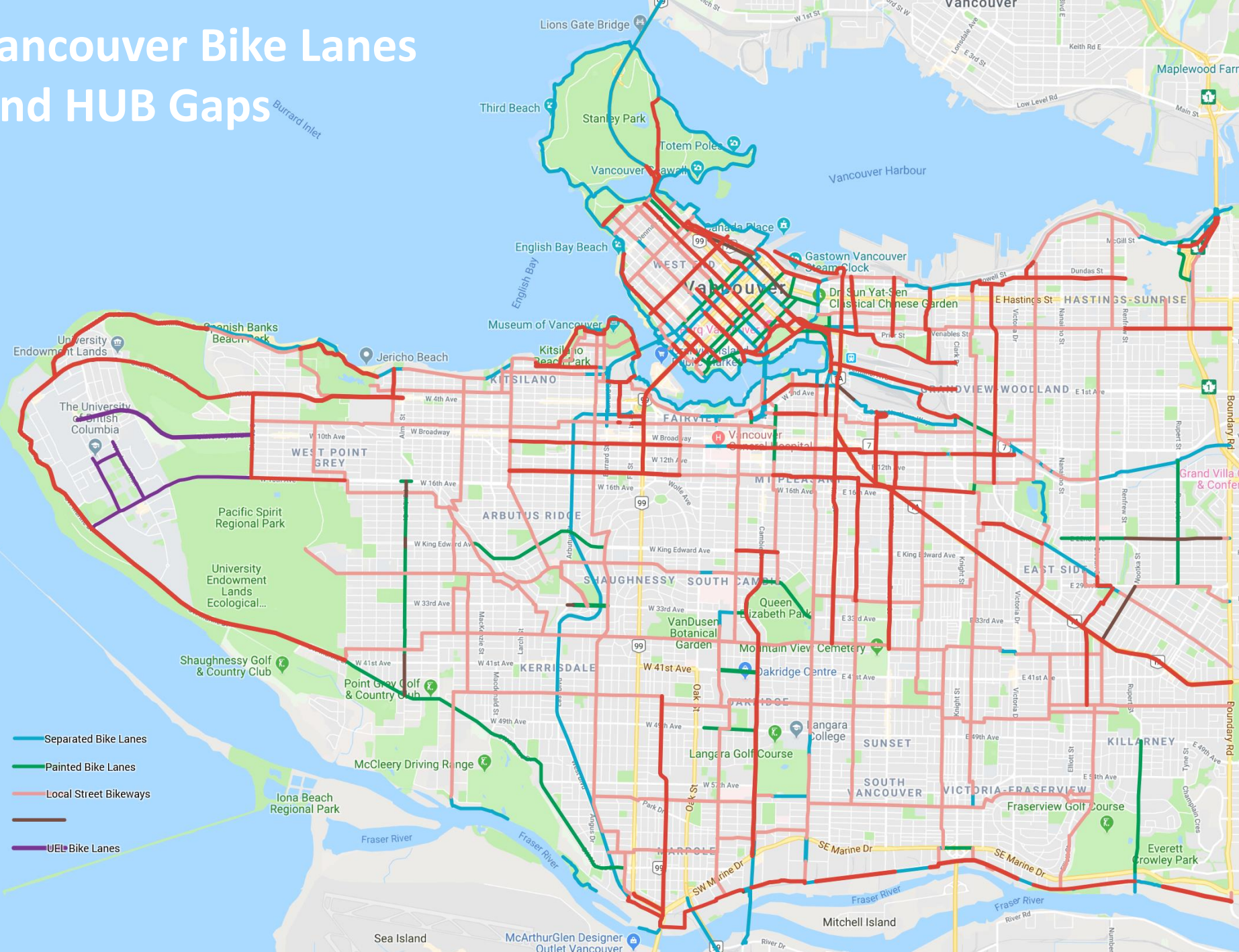
# Appendices

# Vancouver Bike Lanes (Van Map)



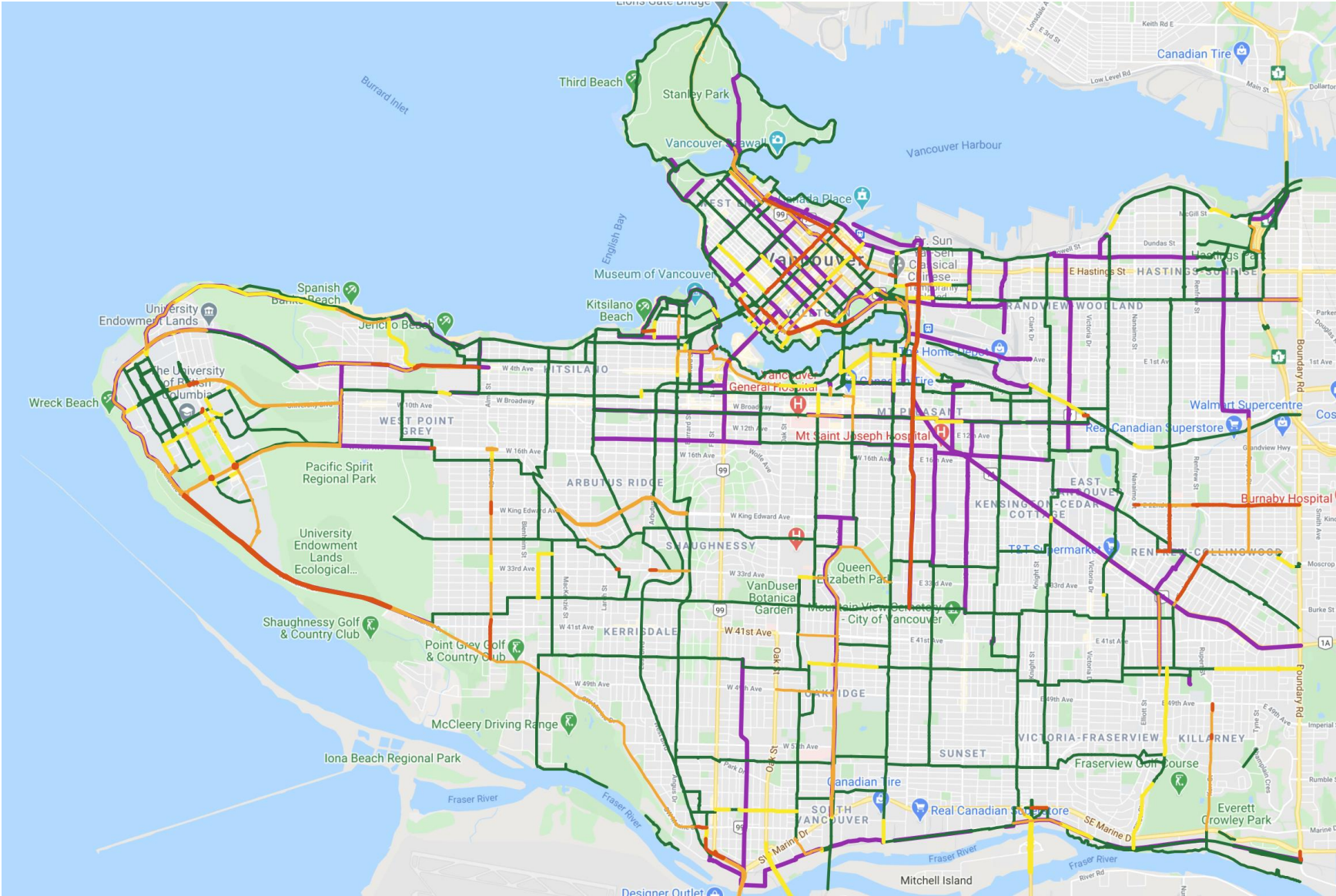
- Separated Bike Lanes
- Painted Bike Lanes
- Local Street Bikeways
- UEL Bike Lanes

# Vancouver Bike Lanes And HUB Gaps

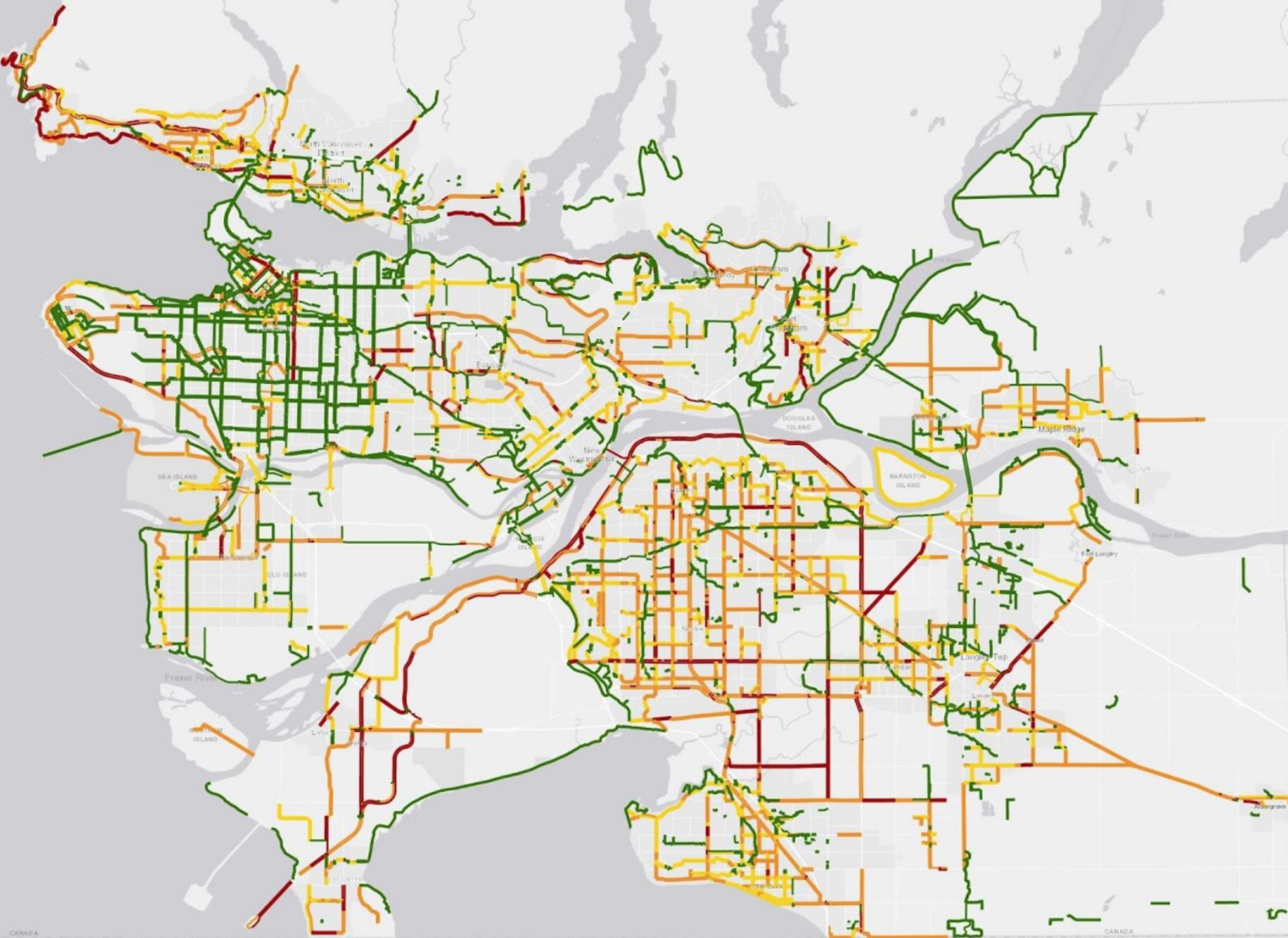


- Separated Bike Lanes
- Painted Bike Lanes
- Local Street Bikeways
- UEL Bike Lanes

# Prototype Gap Maps with SoC Route Data



# Regional Bikeway Map



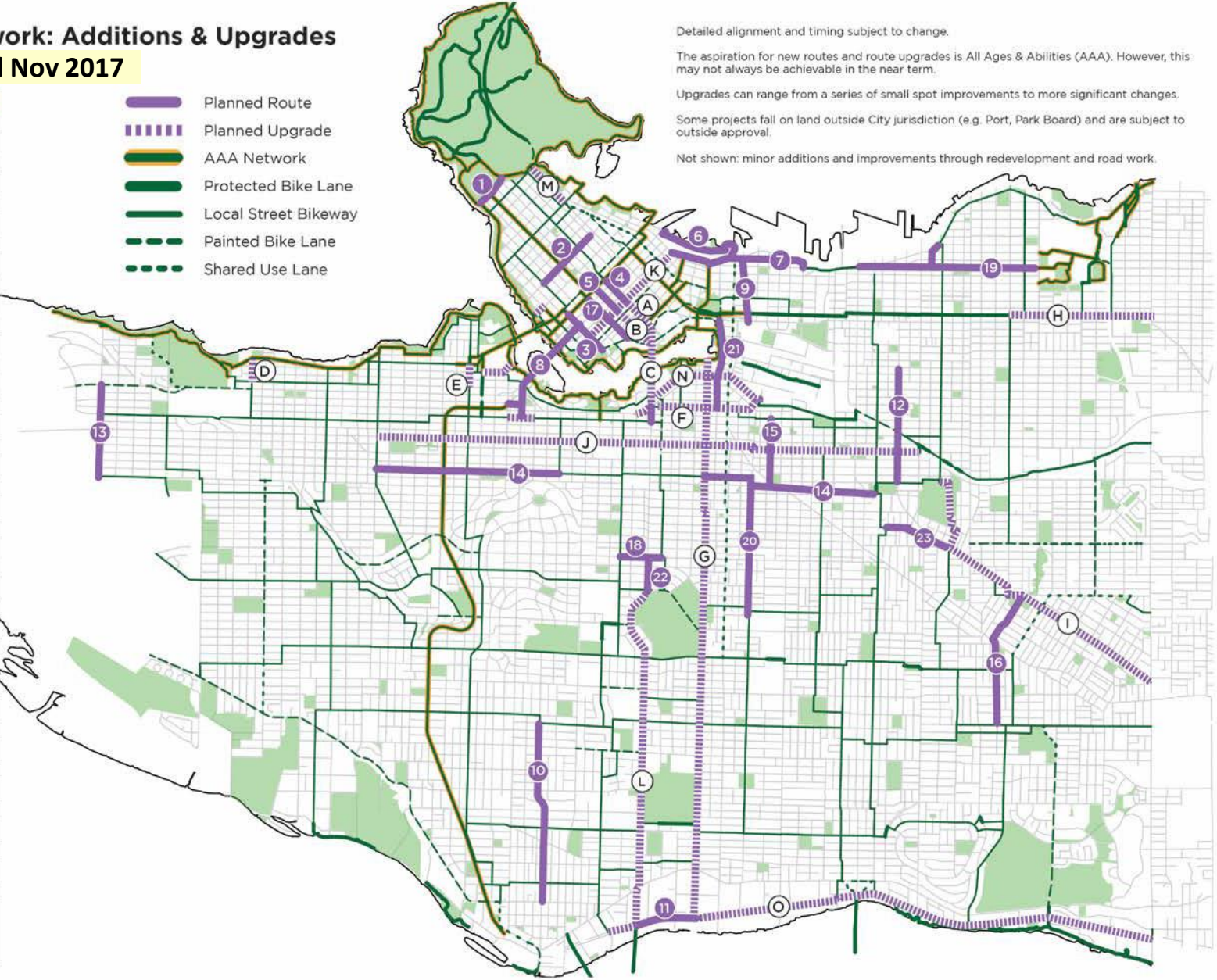
# 5-Year Cycling Network: Additions & Upgrades 2018-2022

Added Nov 2017

Detailed alignment and timing subject to change.  
 The aspiration for new routes and route upgrades is All Ages & Abilities (AAA). However, this may not always be achievable in the near term.  
 Upgrades can range from a series of small spot improvements to more significant changes.  
 Some projects fall on land outside City jurisdiction (e.g. Port, Park Board) and are subject to outside approval.  
 Not shown: minor additions and improvements through redevelopment and road work.

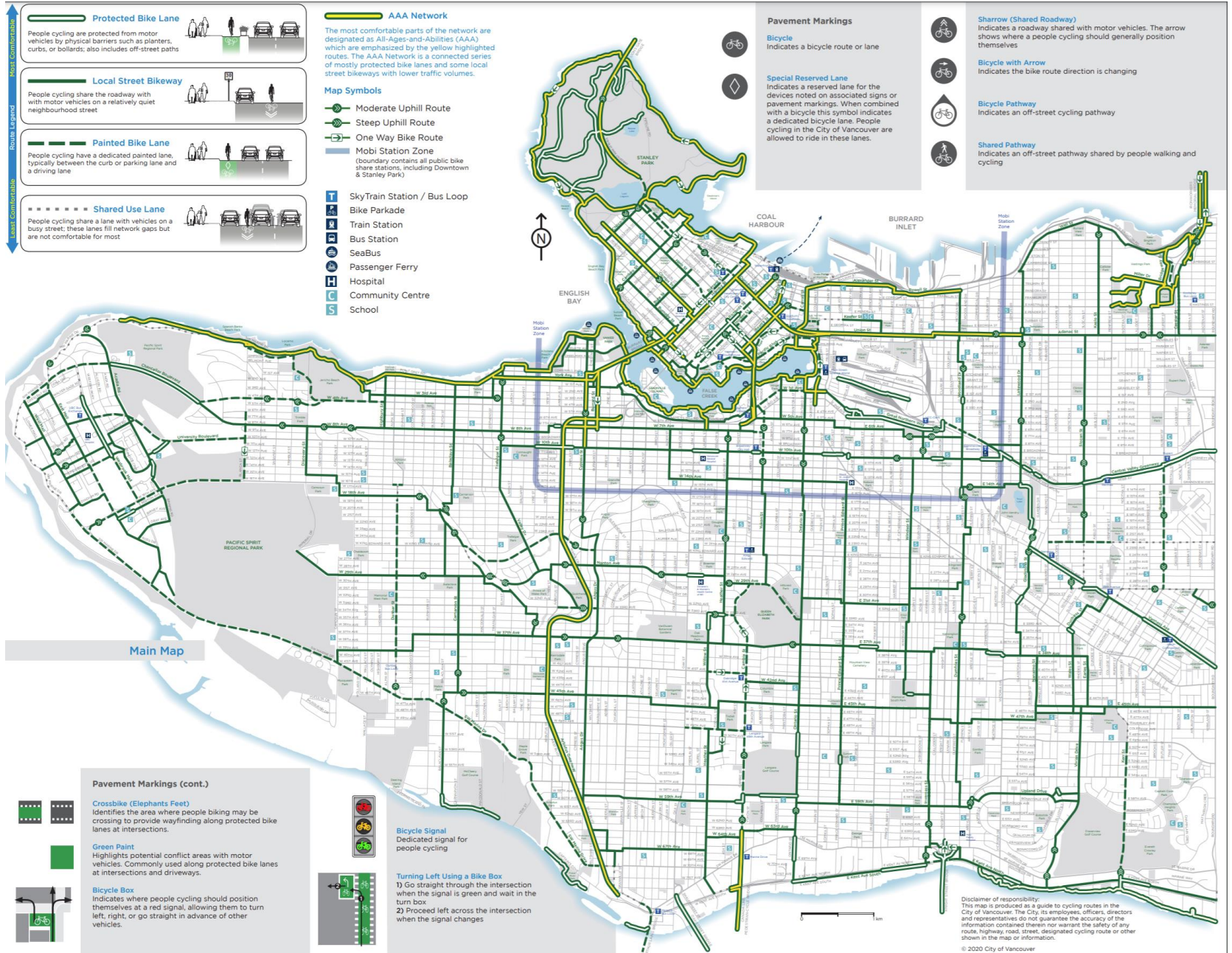
Planned Routes	
1	Park Lane*
2	Bute
3	Drake
4	Smithe
5	Nelson
6	West Waterfront Road**
7	Water-Alexander-Powell
8	Granville Bridge
9	Gore
10	Hudson
11	Kent
12	Commercial
13	Blanca
14	14th Ave
15	St. George Rainway
16	Duchess-Wales*
17	Helmcken
18	King Edward
19	Pandora-Semlin
20	Prince Edward
21	Quebec
22	Cambie
23	Stainsbury
Planned Upgrades	
A	Smithe
B	Nelson
C	Cambie Bridge
D	Highbury
E	Cypress
F	5th Ave
G	Ontario
H	Adanac
I	BC Parkway
J	10th Ave
K	Richards
L	Cambie
M	Georgia
N	1st Ave
O	Kent

- Planned Route
- Planned Upgrade
- AAA Network
- Protected Bike Lane
- Local Street Bikeway
- Painted Bike Lane
- Shared Use Lane



\* Park Board jurisdiction  
 \*\* Port Authority jurisdiction  
 Number/Letter sequence does not imply priority

# CoV Cycling Map – Fall 2020 Update



**Protected Bike Lane**  
People cycling are protected from motor vehicles by physical barriers such as planters, curbs, or bollards; also includes off-street paths

**Local Street Bikeway**  
People cycling share the roadway with motor vehicles on a relatively quiet neighbourhood street

**Painted Bike Lane**  
People cycling have a dedicated painted lane, typically between the curb or parking lane and a driving lane

**Shared Use Lane**  
People cycling share a lane with vehicles on a busy street; these lanes fill network gaps but are not comfortable for most

**AAA Network**  
The most comfortable parts of the network are designated as All-Ages-and-Abilities (AAA) which are emphasized by the yellow highlighted routes. The AAA Network is a connected series of mostly protected bike lanes and some local street bikeways with lower traffic volumes.

- Map Symbols**
- Moderate Uphill Route
  - Steep Uphill Route
  - One Way Bike Route
  - Mobi Station Zone (boundary contains all public bike share stations, including Downtown & Stanley Park)

- SkyTrain Station / Bus Loop
- Bike Parkade
- Train Station
- Bus Station
- SeaBus
- Passenger Ferry
- Hospital
- Community Centre
- School

- Pavement Markings**
- Bicycle**  
Indicates a bicycle route or lane
  - Special Reserved Lane**  
Indicates a reserved lane for the devices noted on associated signs or pavement markings. When combined with a bicycle this symbol indicates a dedicated bicycle lane. People cycling in the City of Vancouver are allowed to ride in these lanes.

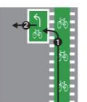
- Sharrow (Shared Roadway)**  
Indicates a roadway shared with motor vehicles. The arrow shows where a people cycling should generally position themselves
- Bicycle with Arrow**  
Indicates the bike route direction is changing
- Bicycle Pathway**  
Indicates an off-street cycling pathway
- Shared Pathway**  
Indicates an off-street pathway shared by people walking and cycling

**Pavement Markings (cont.)**

- Crossbike (Elephants Feet)**  
Identifies the area where people biking may be crossing to provide wayfinding along protected bike lanes at intersections.
- Green Paint**  
Highlights potential conflict areas with motor vehicles. Commonly used along protected bike lanes at intersections and driveways.
- Bicycle Box**  
Indicates where people cycling should position themselves at a red signal, allowing them to turn left, right, or go straight in advance of other vehicles.



**Bicycle Signal**  
Dedicated signal for people cycling



**Turning Left Using a Bike Box**  
1) Go straight through the intersection when the signal is green and wait in the turn box  
2) Proceed left across the intersection when the signal changes

Disclaimer of responsibility:  
This map is produced as a guide to cycling routes in the City of Vancouver. The City, its employees, officers, directors and representatives do not guarantee the accuracy of any route, highway, road, street, designated cycling route or other shown in the map or information.  
© 2020 City of Vancouver

# Translink Major Bikeway Network (MBN)

APPROVED BY THE REGIONAL TRANSPORTATION ADVISORY COMMITTEE - JUNE 27, 2018

