

Vancouver-UBC Local Committee

May 17th, 2022

Web Meeting via Zoom

For a better web meeting:

- We may have many people online, so please mute your phone or microphone when you are not speaking
- Ensure your name is displayed so that we know who you are
- We have a volunteer co host who will watch the text chat queue and help make sure people can ask questions
- Take advantage of the text chat function; ask questions, raise your hand to speak, or provide feedback on a topic. This gives us a text log for the preparation of our minutes. Test it out before 6:30 pm by letting us know you are online, just enter your first name. This will help us with the minutes.
- If you are not logged in to the Zoom meeting you won't see the presentation, but you can access it on our wiki, [here](#) and follow along.
- You can use computer audio (microphone and speaker), or dial in separately

Meeting Agenda

- Welcome, introductions, and announcements
- Updates from Working Group leads
- Consultations Update
- Regional Advisory Committee (RAC) update
- HUB Board of Directors update
- Other Business
- Meeting Adjourns (8:00 pm)
- Break Out Rooms (8:00 pm – 8:30 pm)

Welcome and Introductions

- Welcome to new attendees
- Anything to add to the agenda?
- Minutes from April

Announcements

- Van Connect – please report bike lane maintenance issues, particularly debris and/or flooding
- Go By Bike Week, Bike to School Week, from May 30th to June 5th. Register, log your trips, volunteer
- Concord Cycling Festival June 30th
- Cycling Maps updated (CoV, and Translink)
- At the end of our regular meeting, at 8 pm, we will have several Zoom breakout rooms set up, for some of our working groups (Parks, General Discussion)
- Any other announcements?

Updates from Working Group Leads

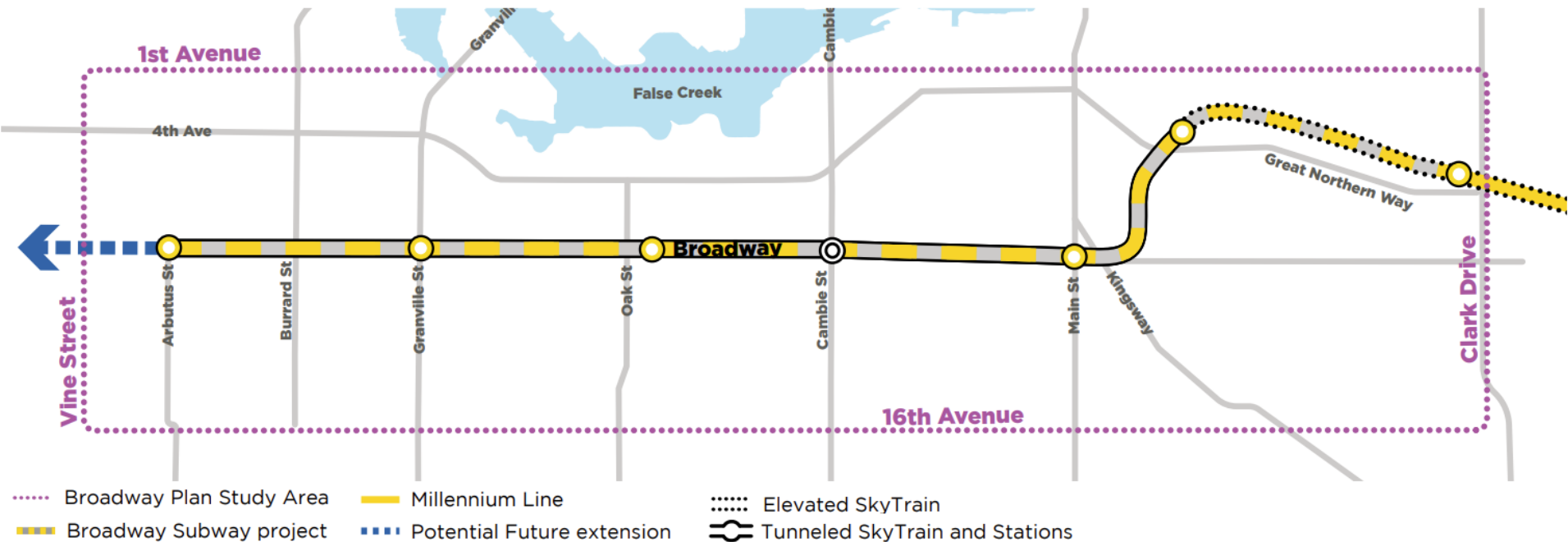
- Assessment Rides – Jeff, Anthony, Philippe – Richard St/Smithe St report underway. Future assessment rides?
- Cycling in Parks – Lisa - John Hendry Park Renewal Plan approved; Stanley Park Mobility Study
- Arbutus Greenway – Stan – Update
- Broadway Subway – Jeff, Anthony – Engagement with the Business Stakeholders Advisory Group, and Broadway Subway Project Traffic Advisory Group
- East Van Greenway – Clark – update; Rupert and Renfrew Station Area Plans
- Vancouver Municipal Election – Lisa – preparing for the 2022 election

Consultations – ICBC

- Insurance basics – theft, damage, liability
- Subrogation – the recovery of costs following a payout for an insurance claim
- ICBC Subrogation Policy changes announced:
 - Cases involving minors
 - Cases with catastrophic injuries or fatalities
 - Cases with unclear liability (50:50 assignment of blame)
 - Cases deemed to have cyclist responsibility will go to a senior ICBC review panel before cost recovery is pursued
- These changes are retroactive for open cases
- Other liability insurance (eg homeowner, rental policies). ICBC coordination with other insurers.
- The importance of witness statements
- More communications to follow. HUB Cycling and the BC Cycling Coalition will host an upcoming webinar

Consultations – The Broadway Plan

- Scope: The Broadway Corridor, from Clark Drive to Vine St, between 1st Ave and 16th Ave



Consultations – The Broadway Plan

- The plan seeks to leverage the opportunity of the Broadway Subway by coordinating planning with a review of land use, housing, transportation, and infrastructure
- The [draft plan](#) continues to not support cycling on Broadway, or to provide safe and comfortable cycling access to key subway stations
- Contact Mayor and Council to request better active transportation facilities prior to May 18th 2022 (see Current Consultations for links)
- Or register to speak to council to voice your concerns.

Consultations – The Broadway Plan

BROADWAY PLAN PROPOSED AMENDMENT FROM COUNCILLOR BOYLE

THAT Council commit to a future for the street of Broadway that increases safety and livability for families, seniors, and people with disabilities and decreases carbon emissions. And do so by directing staff to implement a car-lite Broadway, reallocating surface road space to prioritize pedestrians, buses, access for people with disabilities, active transportation, emergency vehicles, public space, and the movement of goods. And deprioritizing personal private vehicles.

FURTHER THAT Council direct staff to build a safe active transportation lane for all ages and abilities on Broadway.

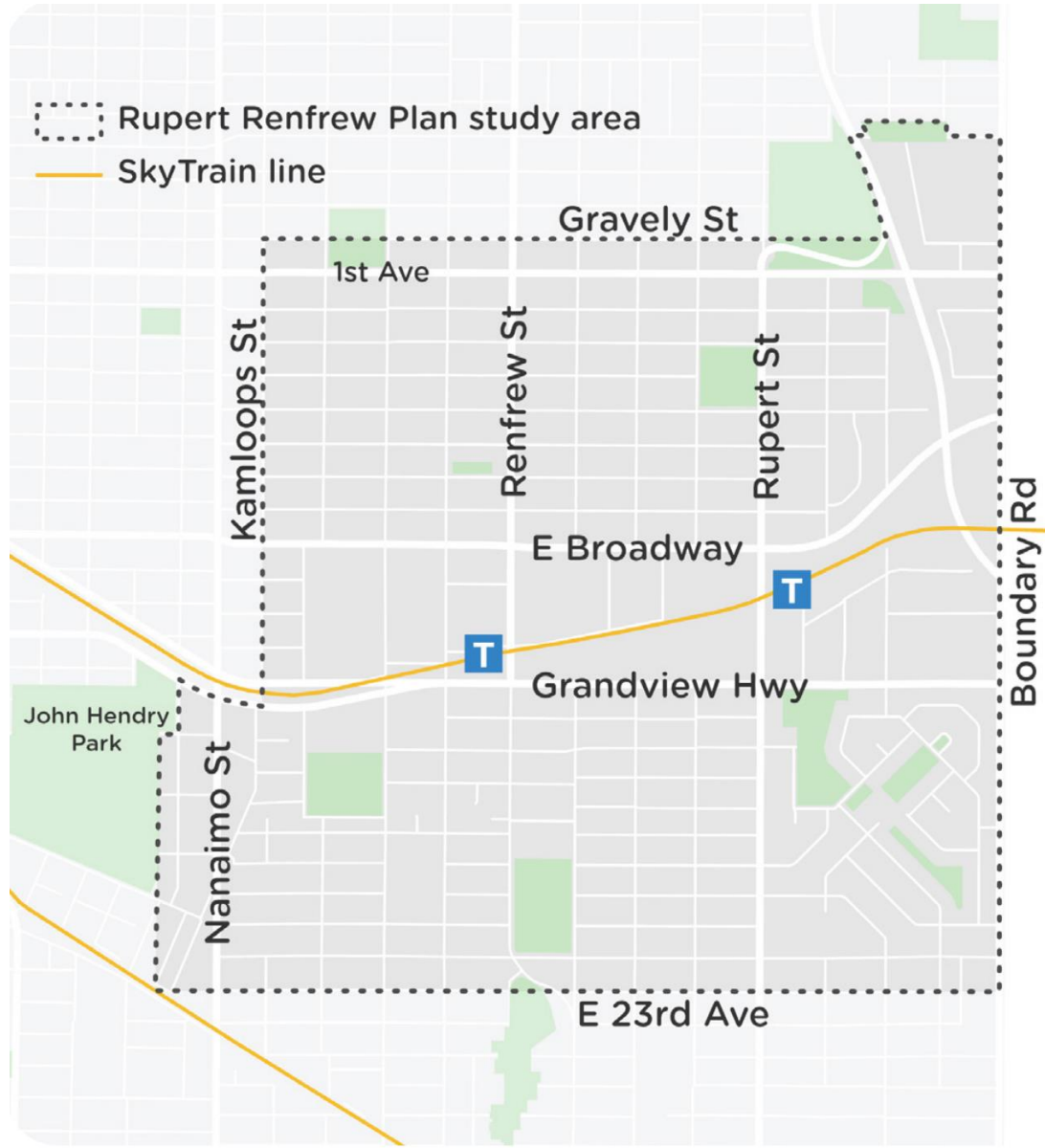
#BROADWAYFORPEOPLE



Consultations – Rupert and Refrew Stations Area Plan

- This area includes the Central Valley Greenway, and the new East Side Crosscut Greenway. Cycling issues include cycling through the plazas at the two Skytrain stations; the Rupert St cycling lanes; and the 22nd St bikeway (Nanaimo to Boundary Road)
- Complete a survey, attend a mapping workshop or open house, email questions or comments

Consultations – Rupert and Refrew Stations Area Plan



Consultations – The Vancouver Plan

- A long-term strategy for growth through to 2050. The primary focus is on land use planning. The plan does consider transportation issues
- Plan elements of note:
 - Connecting people to jobs and daily needs in an equitable way, prioritizing low-cost, healthy ways of getting around
 - Prioritizing land use decisions to build neighbourhoods that help people meet their daily needs without having to drive
 - Transforming road space from spaces for vehicles to places for people
 - Design retail streets as complete streets, prioritizing safe and comfortable walking, rolling, biking, and transit access
 - Car free retail streets in the city centre
 - Develop strategies that prioritize walking, biking, transit and public space on streets over parking
 - An update to the Greenway Plan
- Council decision expected in June
 - Contact Mayor and Council to share your thoughts
 - Register to speak at the council meeting

Consultations – CoV Transportation Advisory Committee (TRAC)

- Met to discuss critical infrastructure gaps for their recommendations to City staff
- Focus of the discussion was on the south and east sides of Vancouver, on transportation routes, and on gaps in the existing network
 - Kent Ave
 - Kerr St
 - Vivian St, Elliot St
 - 22nd Ave
- Invitation for a HUB rep to attend an upcoming workshop on Emergency Preparedness, especially heat emergencies, to be held jointly with the Seniors Advisory Committee

Consultations – Stanley Park Trails (Vancouver Off Road Cycling Assoc)

- VORCA was formed to advocate for better cycling trails in parks and wilderness areas
- New signs were erected restricting trail use by people cycling in Stanley Park
- Question of whether the restrictions are new, or just the signs are new (park control bylaw)
- Question of whether people on bikes cause environmental damage to the trails (erosion, etc)
- Question of how busy the trails are, whether there are increased cases of user conflicts, or not



V.O.R.C.A

p/b



V.O.R.C.A. Founding Presentation

February 2022 Current State: Multi-Use Gravel Roads in Stanley Park

Red = Historical closure
Blue = 2020 signed closure
Purple = Fall 2021 signed closure
Orange = Non-signed closure, officially pedestrian only on city maps





V.O.R.C.A. Founding Presentation

February 2022 Current State: City of Vancouver Gravel Road Map



Consultations – HUB Regional Advisory Committee (RAC)

- MoTI meetings regarding the Surrey Langley Skytrain Extension, and AT components. The opportunity for a cycle highway along the route
- TIC meetings regarding the new Fraser River Tunnel project and AT components
- Engagement with Metro Vancouver re their Iona Causeway project, and proposed cycling lanes there
- Meetings with UBC health care researchers studying the use of cycling facilities by those with mobility challenges
- Attended a workshop on Mobility Pricing hosted by Moving in a Livable Region, as AT subject matter experts

Consultations – HUB Board

- BC Government has advised us that changes are coming to the BC Motor Vehicle Act.
- Multiple ministries are involved
- This is a significant opportunity for advocacy work to benefit vulnerable road users
 - Change the name: eg, MVA to Highway Safety Act
 - Recognize bicycles as a class of vehicle
 - Vulnerable Road User regulations, eg Reverse Onus or strict liability
 - Safe passing regulations
- These changes are likely to arrive in 2023

Breakout Rooms

- We have set up several Breakout Rooms so that our working groups can continue with smaller group discussions.
- Each will have a moderator/leader. The rooms will be open for 30 minutes.
- Please select which one you would like to go to
 - Cycling in Parks (Lisa)
 - General Discussion (Jeff)

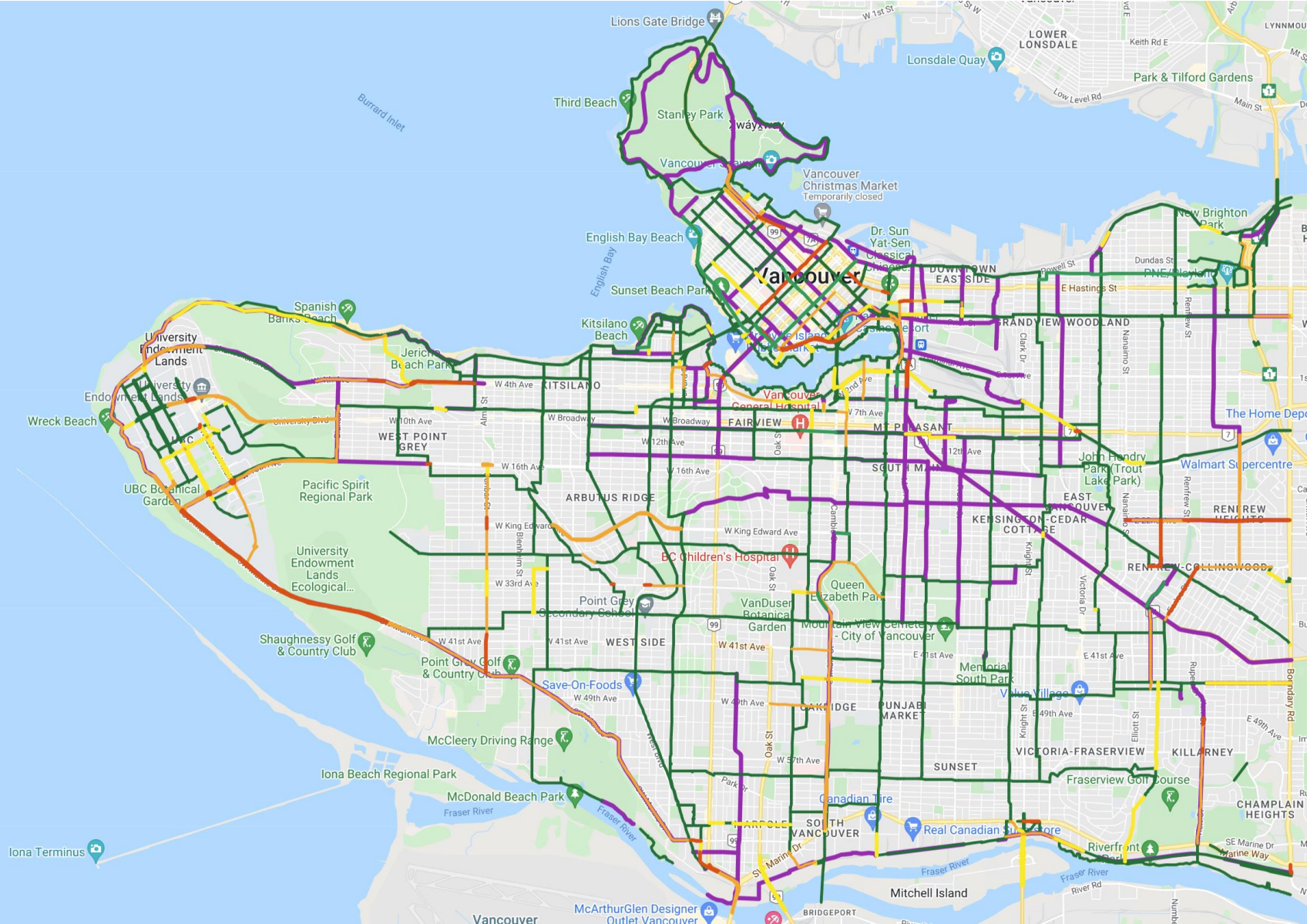
Appendices

Vancouver Bike Lanes (Van Map)



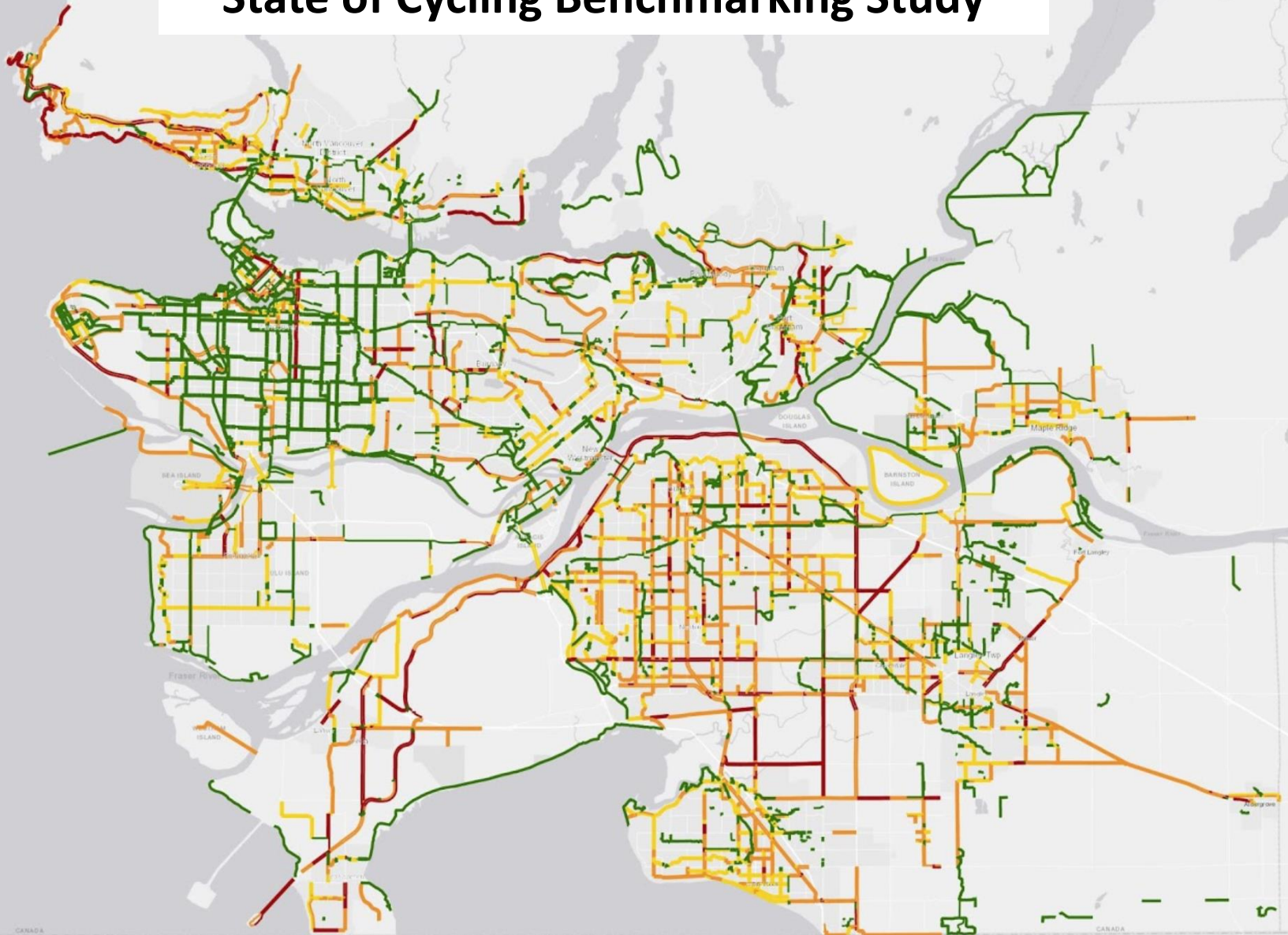
- Separated Bike Lanes
- Painted Bike Lanes
- Local Street Bikeways
- UEL Bike Lanes

Prototype Gap Map (Vancouver/UBC) with SoC Route Data (May 2022)



Regional Bikeway Map

State of Cycling Benchmarking Study



CoV Cycling Network Improvement Budget

5-Year Cycling Network: Additions & Upgrades 2018-2022 **Added Nov 2017**

Detailed alignment and timing subject to change.

The aspiration for new routes and route upgrades is All Ages & Abilities (AAA). However, this may not always be achievable in the near term.

Upgrades can range from a series of small spot improvements to more significant changes.

Some projects fall on land outside City jurisdiction (e.g. Port, Park Board) and are subject to outside approval.

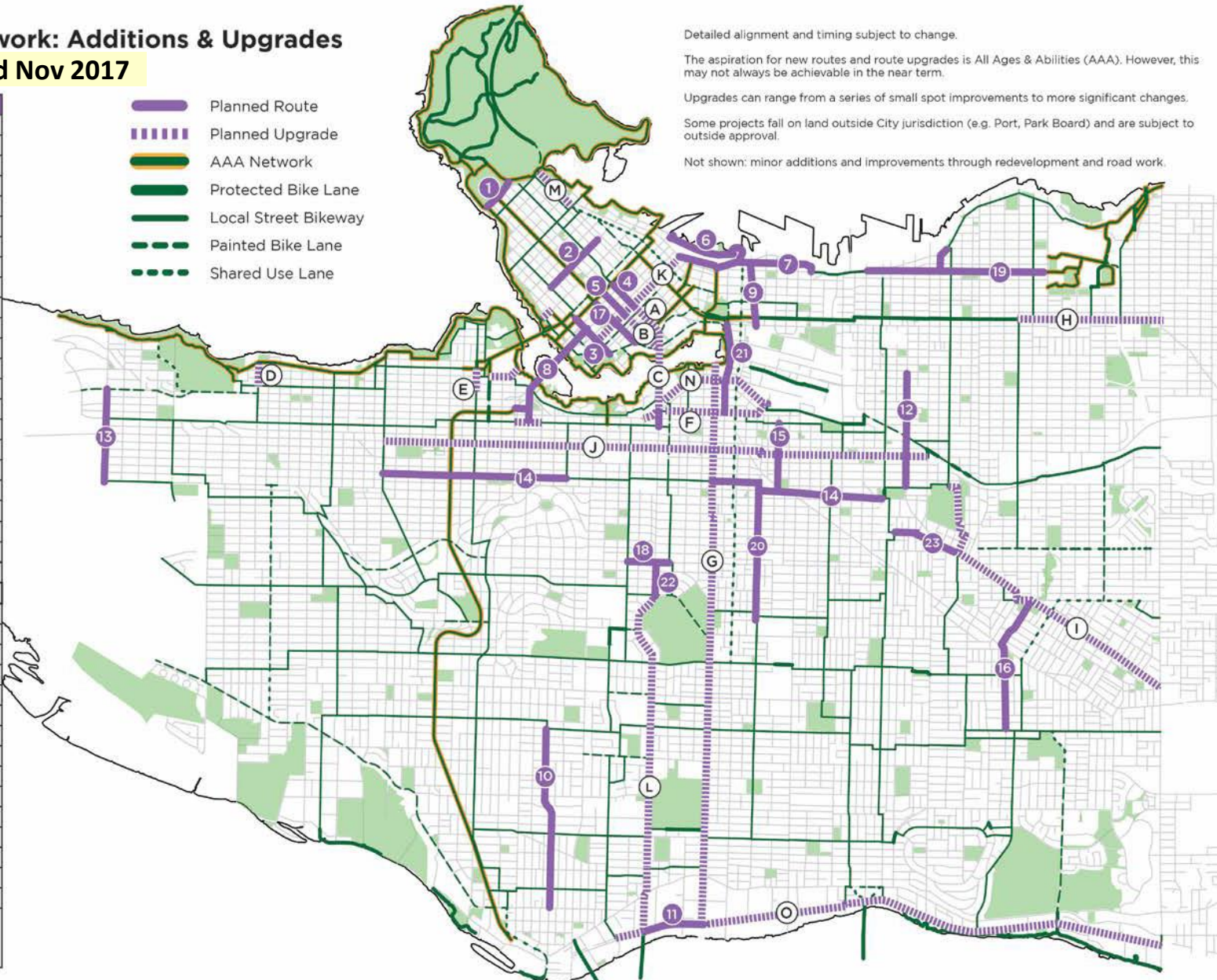
Not shown: minor additions and improvements through redevelopment and road work.

-  Planned Route
-  Planned Upgrade
-  AAA Network
-  Protected Bike Lane
-  Local Street Bikeway
-  Painted Bike Lane
-  Shared Use Lane

Planned Routes	
1	Park Lane*
2	Bute
3	Drake
4	Smithe
5	Nelson
6	West Waterfront Road**
7	Water-Alexander-Powell
8	Granville Bridge
9	Gore
10	Hudson
11	Kent
12	Commercial
13	Blanca
14	14th Ave
15	St. George Rainway
16	Duchess-Wales*
17	Helmcken
18	King Edward
19	Pandora-Semlin
20	Prince Edward
21	Quebec
22	Cambie
23	Stainsbury

Planned Upgrades	
A	Smithe
B	Nelson
C	Cambie Bridge
D	Highbury
E	Cypress
F	5th Ave
G	Ontario
H	Adanac
I	BC Parkway
J	10th Ave
K	Richards
L	Cambie
M	Georgia
N	1st Ave
O	Kent

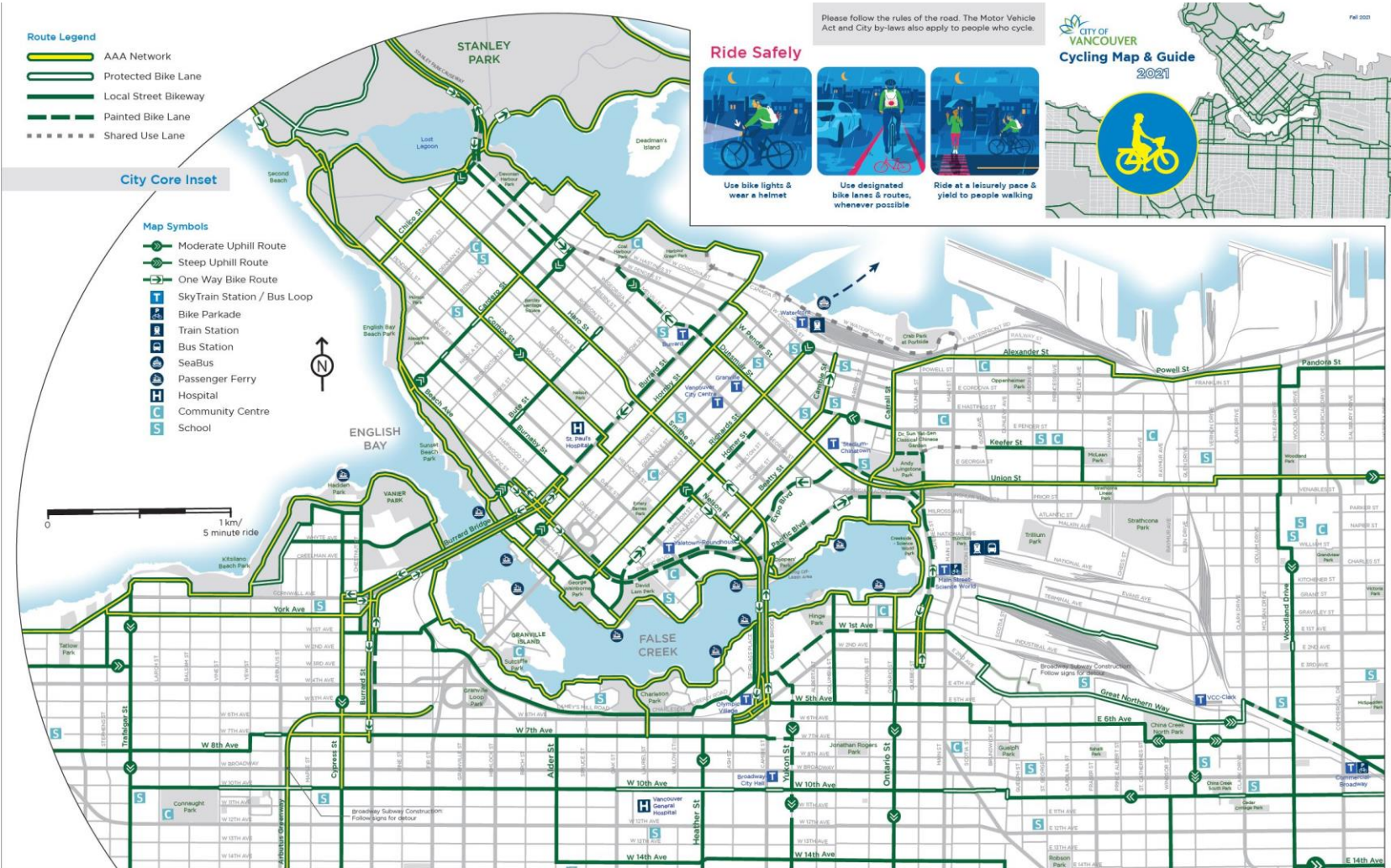
* Park Board jurisdiction
 ** Port Authority jurisdiction
 Number/Letter sequence does not imply priority



CoV Cycling Map – Fall 2021 Update



CoV Cycling Map – Fall 2021 Update



- Route Legend**
- AAA Network
 - Protected Bike Lane
 - Local Street Bikeway
 - Painted Bike Lane
 - Shared Use Lane

City Core Inset

- Map Symbols**
- Moderate Uphill Route
 - Steep Uphill Route
 - One Way Bike Route
 - SkyTrain Station / Bus Loop
 - Bike Parkade
 - Train Station
 - Bus Station
 - SeaBus
 - Passenger Ferry
 - Hospital
 - Community Centre
 - School

Please follow the rules of the road. The Motor Vehicle Act and City by-laws also apply to people who cycle.

Ride Safely



- Use bike lights & wear a helmet
- Use designated bike lanes & routes, whenever possible
- Ride at a leisurely pace & yield to people walking



Mobi by Show Go is Vancouver's public bike share system

- Users can unlock a bike at any station, ride, and return it to any station.
- Users can take an unlimited number of trips during their membership period.
- Most of the stations have free Wi-Fi.

For more info and current station locations:

- Visit www.mobibikes.ca
- Download the "Mobi by Show Go" App
- Call 778-655-1800

Check out the Mobi Station Zone on the Main Map. The boundary contains all public bike share stations, including Downtown and Stanley Park.

Walk + Bike + Roll: Getting Around the Vancouver Way

By walking, cycling, rolling, and taking transit more often, you can:

- Improve your personal health
- Improve the health of your environment
- Alleviate congestion on our streets

vancouver.ca/walkbikeroll

For More Information from the City of Vancouver

Phone/TTY: 3-1-1/7-1-1

Web: vancouver.ca/cycling

Download the cycling map vancouver.ca/cycling

Bike network inquiries & small upgrade projects: bikeupgrades@vancouver.ca

Report garbage, graffiti, and much more with the City's [VanConnect](http://vancouver.ca/vanconnect) app vancouver.ca/vanconnect

Micro Mobility: Where can I ride?

	Major Road	Local Road	Protected Bike Lane or Pathway	Sidewalk
Bicycle	✓	✓	✓	x
E-Bike*	✓	✓	✓	x
Moped	✓	✓	x	x
Skateboard**	x	x	x	✓
Hoverboard**	x	x	x	✓
E-Skateboard**	x	x	x	x

*With the exception of medical wheelchairs, Vancouver bylaws prohibit the use of motorized devices (e-bikes and e-scooters) on the seawall.
**Curly hoverboards and e-skateboards may not be operated on roads or sidewalks as per the BC Motor Vehicle Act.

Register your Bike to Reduce Theft

It's free and takes only 5 minutes. In the event your bike goes missing, you can activate the police and community to help recover your bike.

Always report a missing bike with police. Better reporting means more returned bikes and helps law enforcement to prioritize their efforts.

www.projects29.com

Bikes on Transit

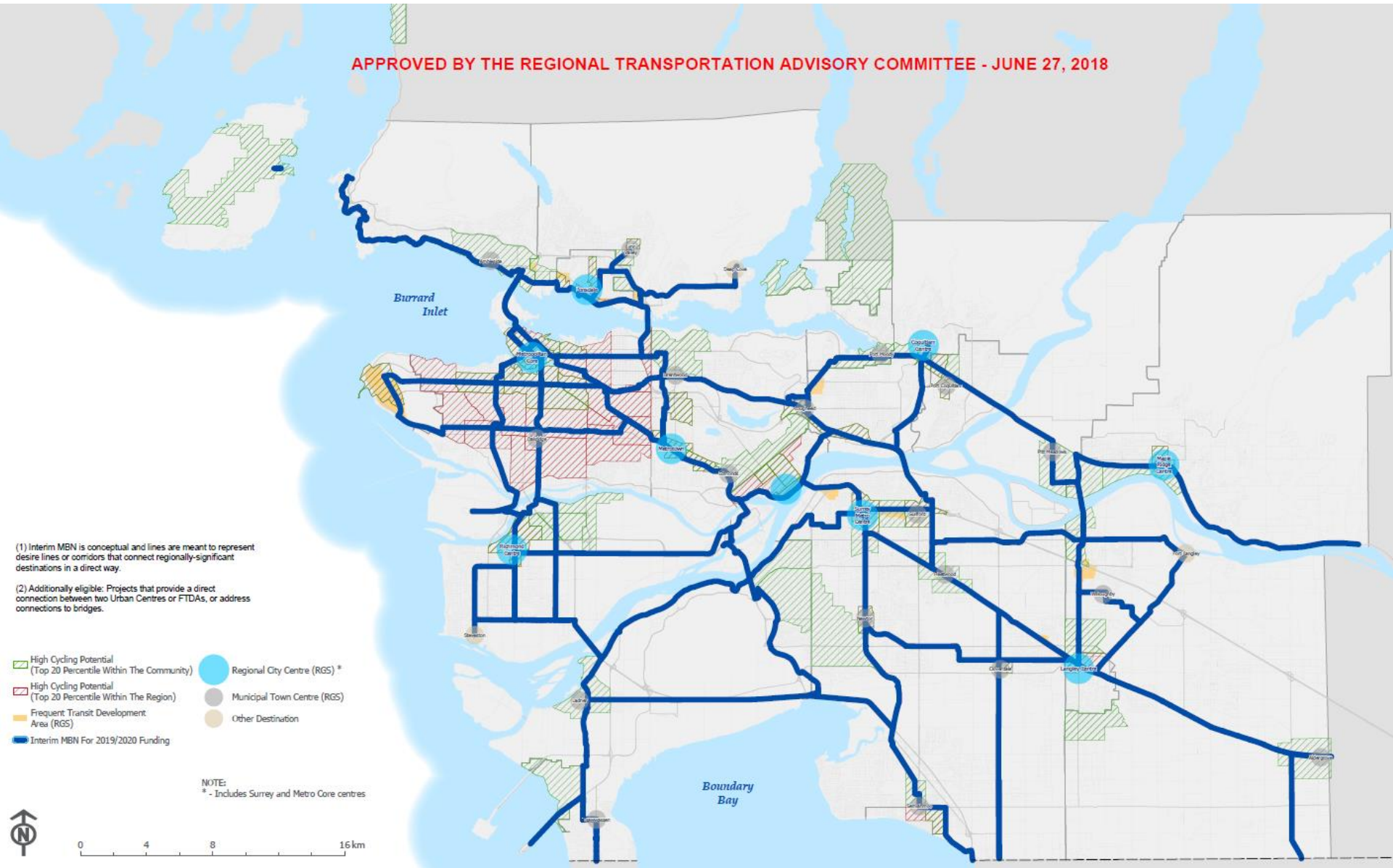
Public transit can help you and your bike go further. You can take your bike on the bus, SkyTrain, SeaBus, and WestCoast Express. Electric and folding bikes are also allowed on the system now (with some restrictions).

Bike Parkades are indoor facilities for registered Compass customers and are available in Vancouver at Main Street-Science World, King Edward, Commercial-Broadway, and Joyce-Collingwood.

For more information visit www.translink.ca

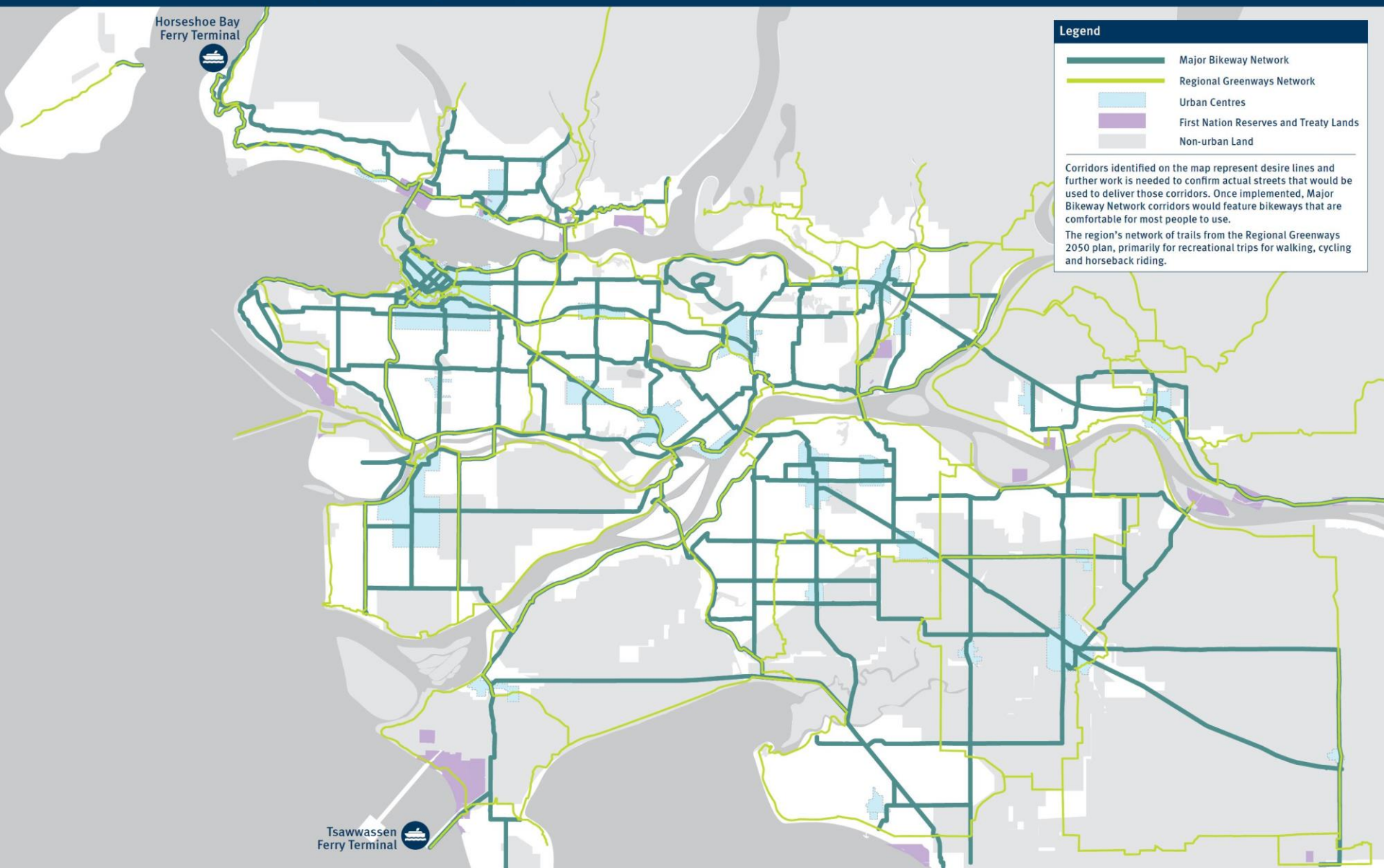
Translink Major Bikeway Network (MBN)

APPROVED BY THE REGIONAL TRANSPORTATION ADVISORY COMMITTEE - JUNE 27, 2018



Translink Major Bikeway Network October 2021

Transport 2050 Regional Cycling Network



Legend

- Major Bikeway Network
- Regional Greenways Network
- Urban Centres
- First Nation Reserves and Treaty Lands
- Non-urban Land

Corridors identified on the map represent desire lines and further work is needed to confirm actual streets that would be used to deliver those corridors. Once implemented, Major Bikeway Network corridors would feature bikeways that are comfortable for most people to use.

The region's network of trails from the Regional Greenways 2050 plan, primarily for recreational trips for walking, cycling and horseback riding.

Vancouver Greenways Plan

City Greenways Plan

- ① Seaside
- ② Lagoon
- ③ Central Valley
- ④ Granville
- ⑤ Downtown Historic Trail
- ⑥ Carrall
- ⑦ Portside
- ⑧ Midtown Way
- ⑨ Parkway
- ⑩ Spirit Trail
- ⑪ Ridgeway
- ⑫ Arbutus
- ⑬ Ontario
- ⑭ Eastside Crosscut
- ⑮ Masumi Mitsui
- ⑯ Fraser River Trail
- ⑰ City Centre
- ⑱ Comox-Helmcken
- Greenway
Constructed or in progress
- Proposed Greenway
Exact route to be determined through public consultation and detailed study
- Bikeway
Constructed or in progress
- - - TransCanada Trail



Metro Vancouver Greenway Plan

