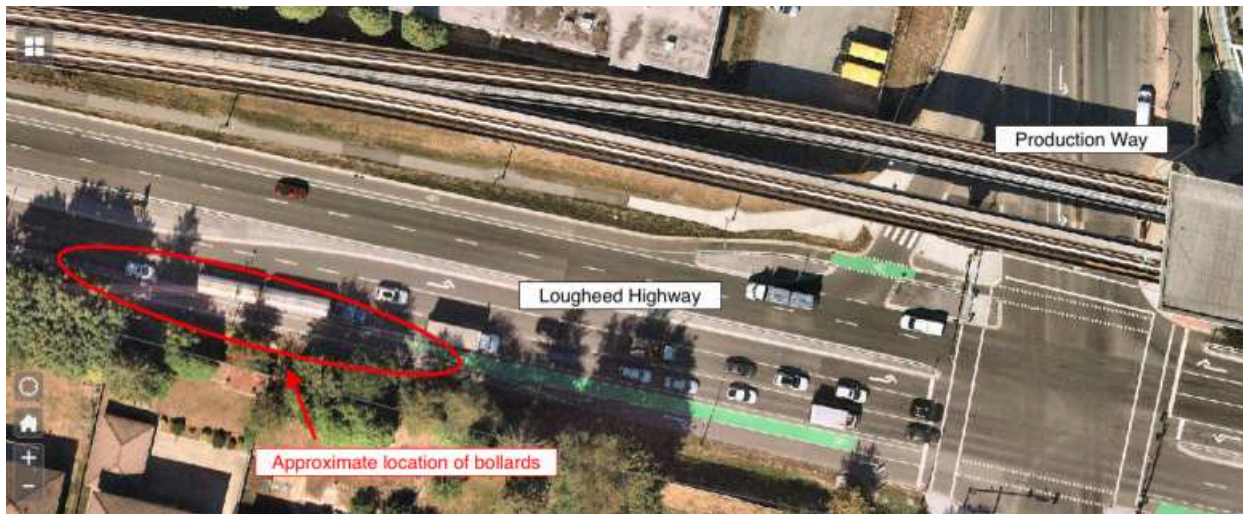


Email to City of Burnaby Transportation Planners

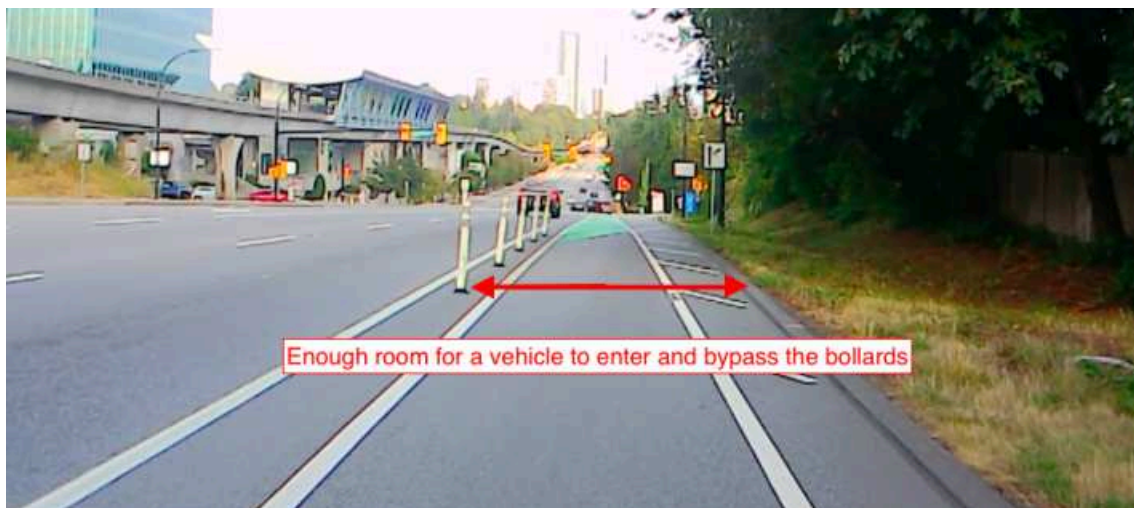
6 August 2024

Subject: Flexible delineators/bollards on Lougheed Hwy bike lane

Our committee would like to bring to your attention a safety concern that we have regarding the positioning of the flexible delineators/bollards along the eastbound bike lane on Lougheed Highway approaching the Production Way intersection:



These flexible delineators are a safety measure in place to provide protection to people riding in the bike lane from people driving in vehicles who are going to turn right at the intersection. However, on multiple occasions, a fellow committee member and I have witnessed vehicles illegally entering the bike lane prior to the start of the flexible delineators as they are placed too far from the curb leaving enough room for a standard vehicle to bypass them:



We've also received feedback from the public regarding this behavior by people driving.

We strongly recommend for the City of Burnaby to review and re-position the flexible delineators at this location to ensure that vehicles are not able to bypass them and mitigate this hazardous situation for people riding in the bike lane.

A better solution would be extending these flexible delineators all the way back to at least Lake City Way, as vehicle traffic tends to drive into the bike lane to pass stopped traffic waiting for the lights at Production Way, which would also offer more protection for people cycling along the bike lane.

We would also like to see quick build curbs where possible as a temporary solution anywhere along Lougheed Hwy similar to what's been implemented on Mt. Seymour Parkway in North Vancouver recently:



Thank you for your consideration,

Wendy Fajloun
HUB Cycling Burnaby Local Committee