

# Vancouver-UBC Local Committee

February 19<sup>th</sup>, 2019

# Topics

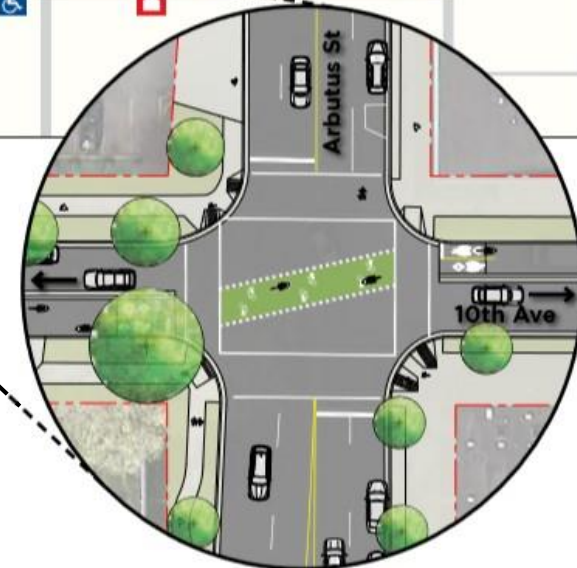
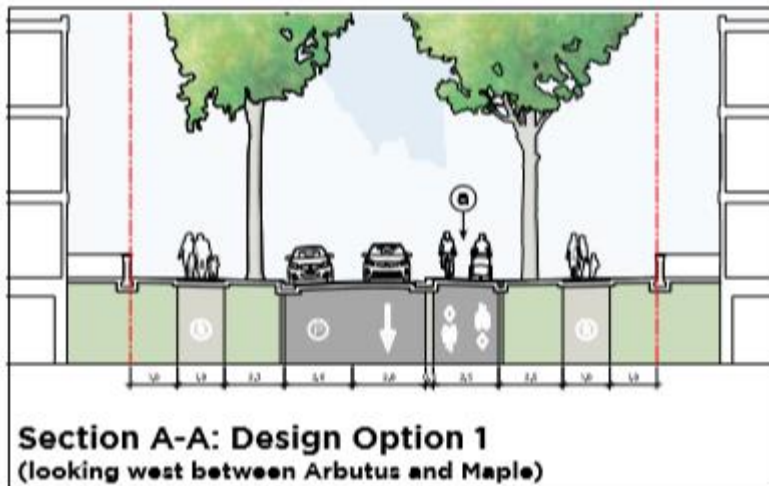
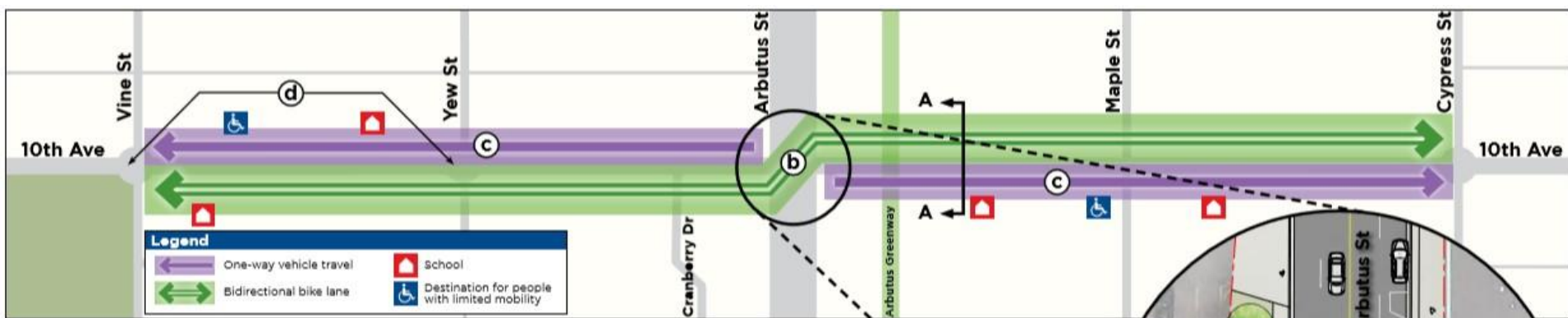
- 10<sup>th</sup> Ave Improvements - Segment 1  
(Burrard to Trafalgar)
- Granville Bridge Walking and Cycling Improvements

# 10<sup>th</sup> Ave Improvements Burrard to Trafalgar



- Challenges with school and other pick-up and drop-off zones in Segment 1
- Three proposals – Design Option 1 preferred by staff
  - Bi-directional protected lane for four blocks
  - Includes a cross-over at Arbutus St
  - Implementation would be phased to coordinate with development and construction in this area

# 10<sup>th</sup> Ave Improvements Burrard to Trafalgar – Design Option 1



Plan of proposed Arbutus St & 10th Ave intersection



# Granville Bridge





# Linking Destinations and Connecting the City



- Safe, intuitive, enjoyable connections for both walking & cycling
- Opportunity for elevator & transit improvements
- Maintaining motor vehicle flow

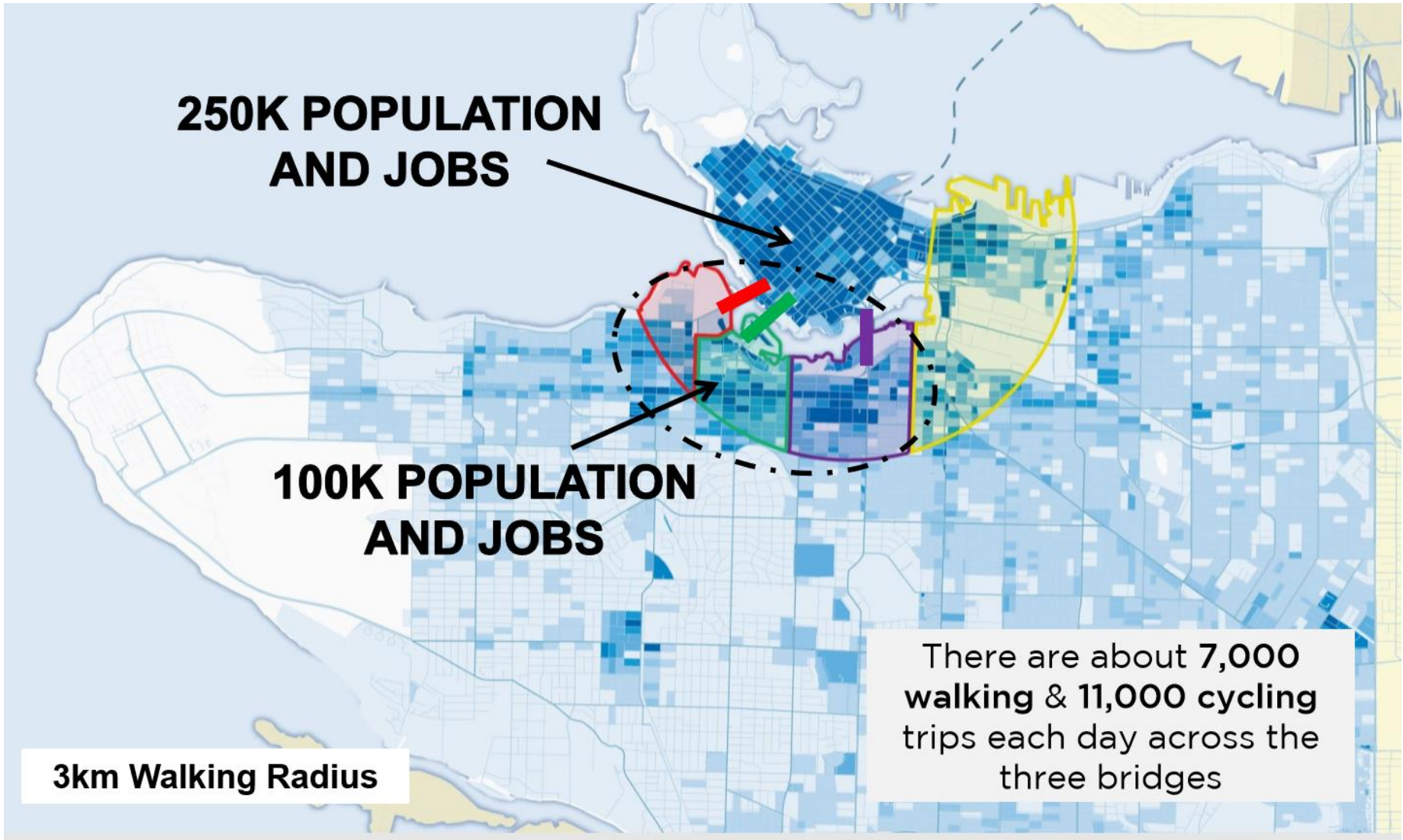
# Population and Jobs

**250K POPULATION  
AND JOBS**

**100K POPULATION  
AND JOBS**

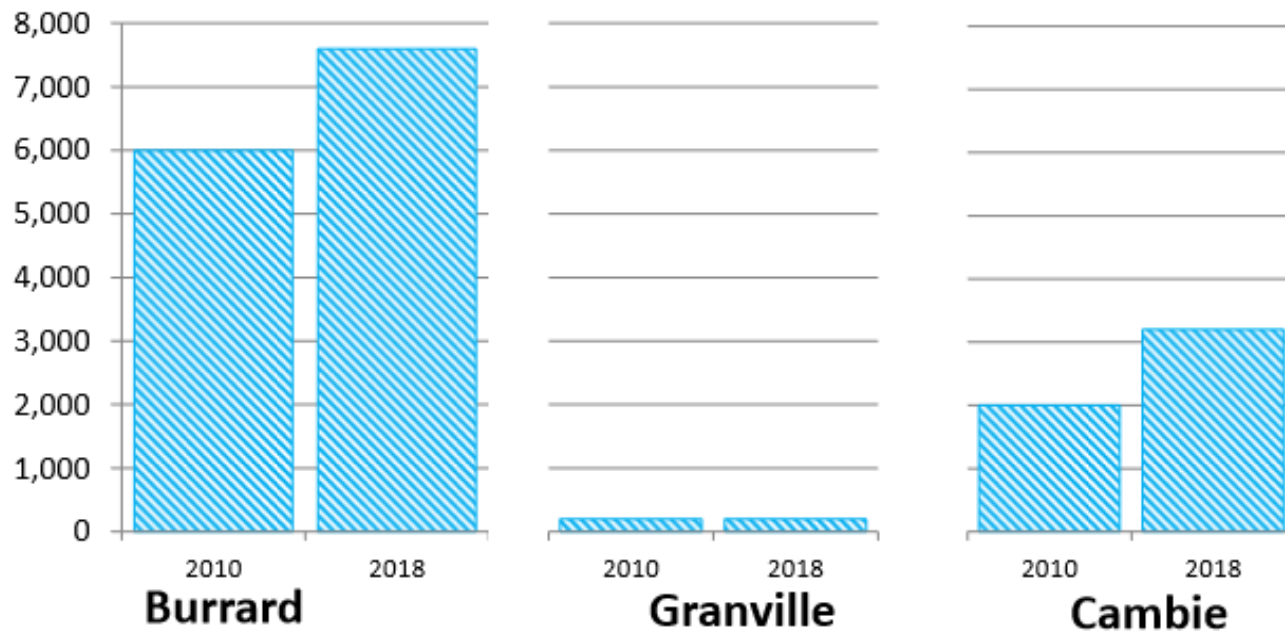
**3km Walking Radius**

There are about 7,000 walking & 11,000 cycling trips each day across the three bridges



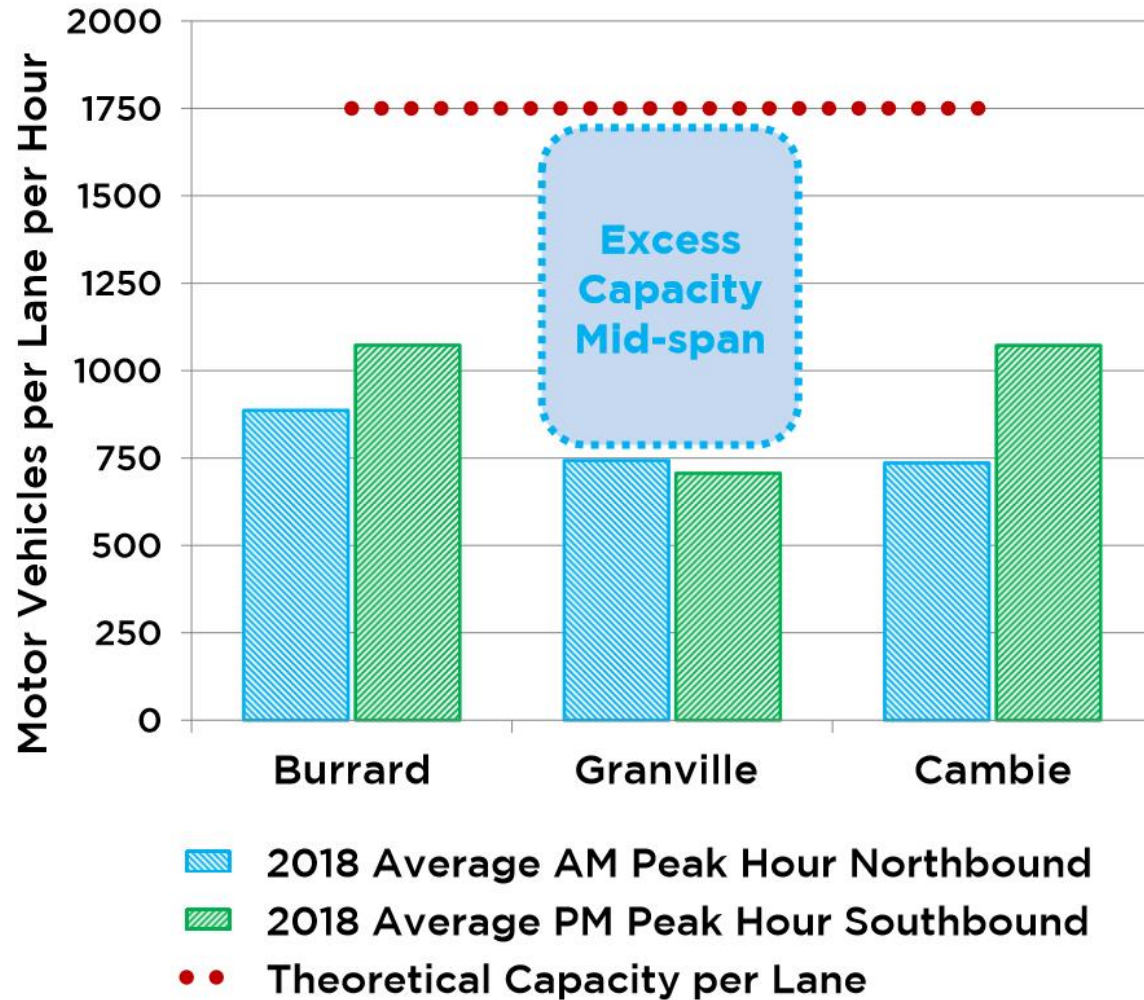
# Can we do better?

## 2-Way 24-hour Cycling Volumes

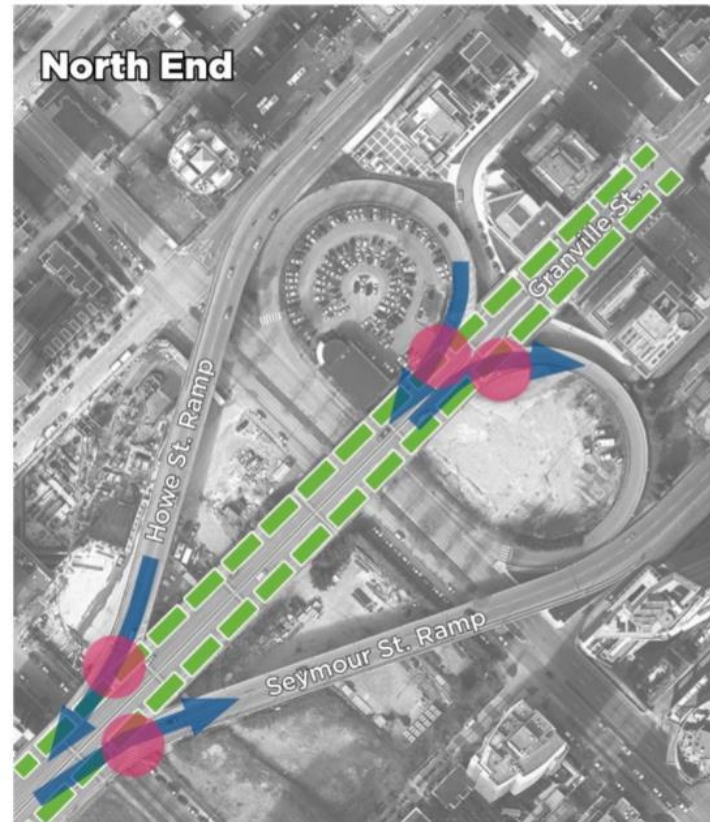
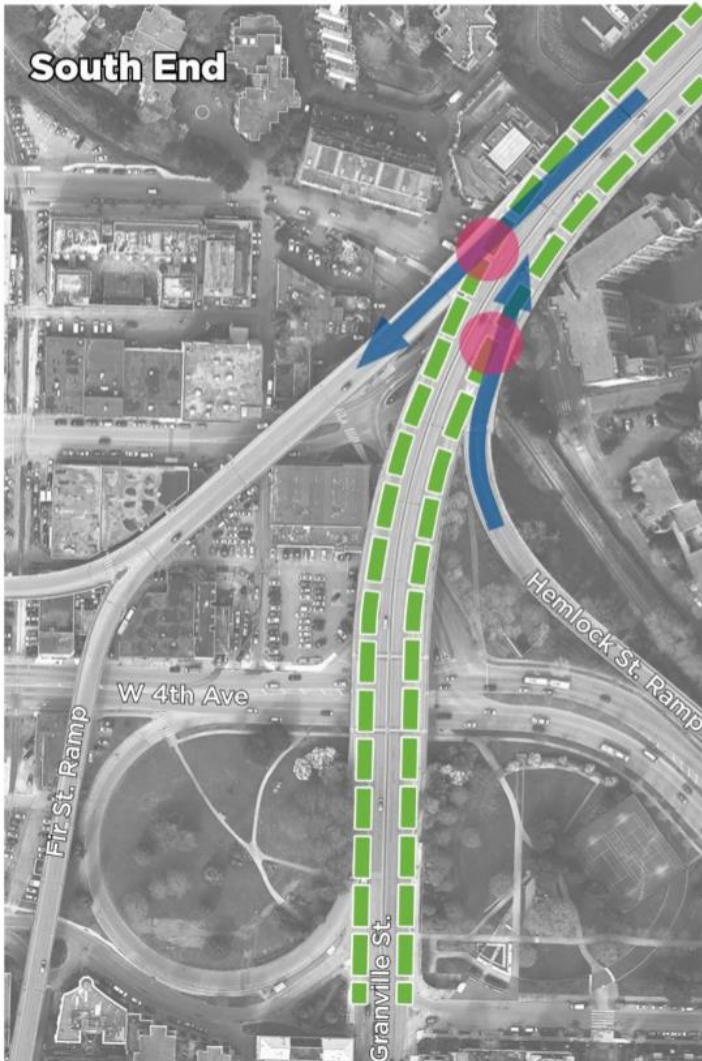




# Is there room?



# Challenges with using a Burrard Bridge design approach



Widen sidewalks and add “uni-directional” protected bike lanes on either side: challenging at ramps



# Past Options Explored

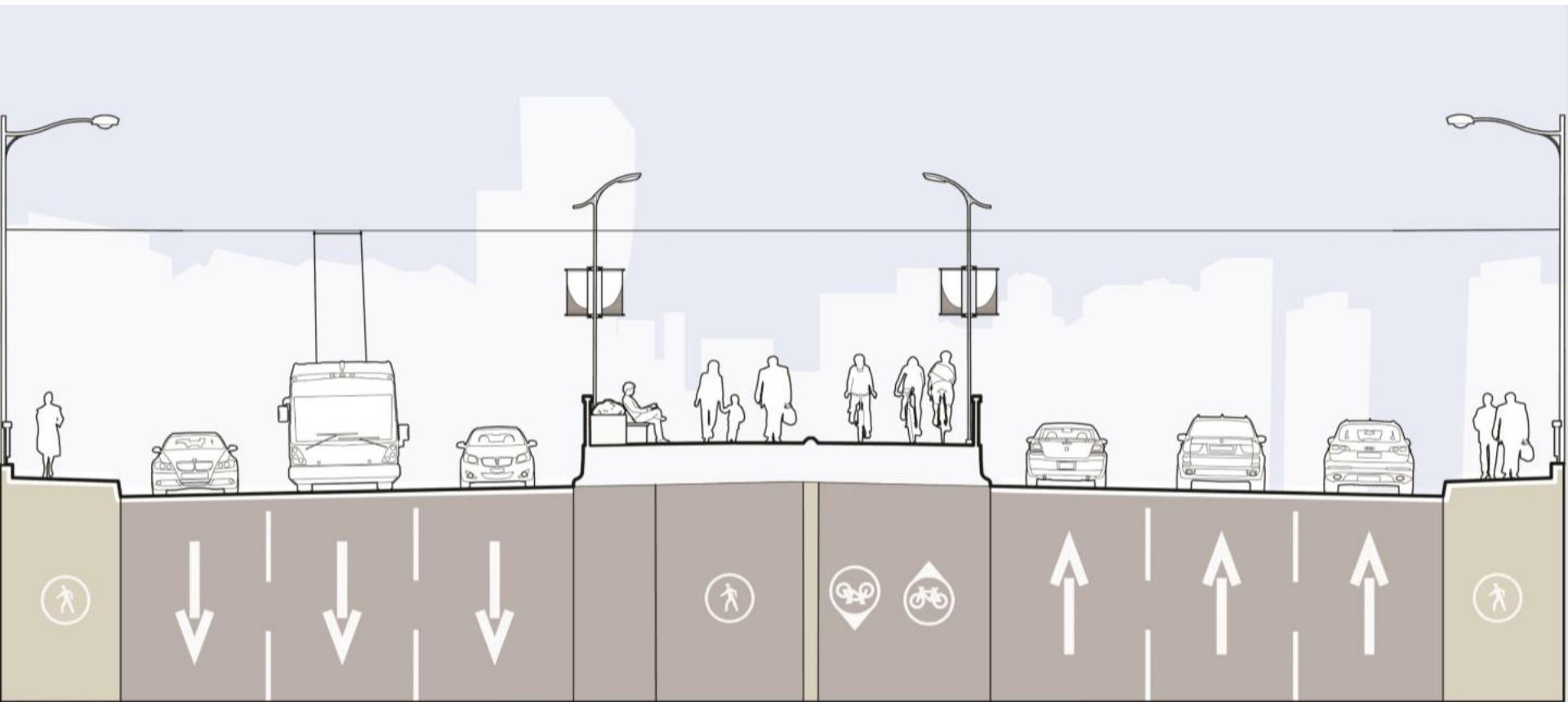
2000 - 2002



- Relies on 2 elevators for accessibility (expensive)
- Does not connect to Arbutus Greenway, or Granville Street Downtown to South Granville
- Access limited by potentially steep grades at ends
- Significant maintenance & operations costs by adding new structure
- Does not support convenient bike access
- Personal security concerns



# Early Concept – 2 Lanes Reallocated



# Potential Public Engagement

## Engagement Tactics

would include:

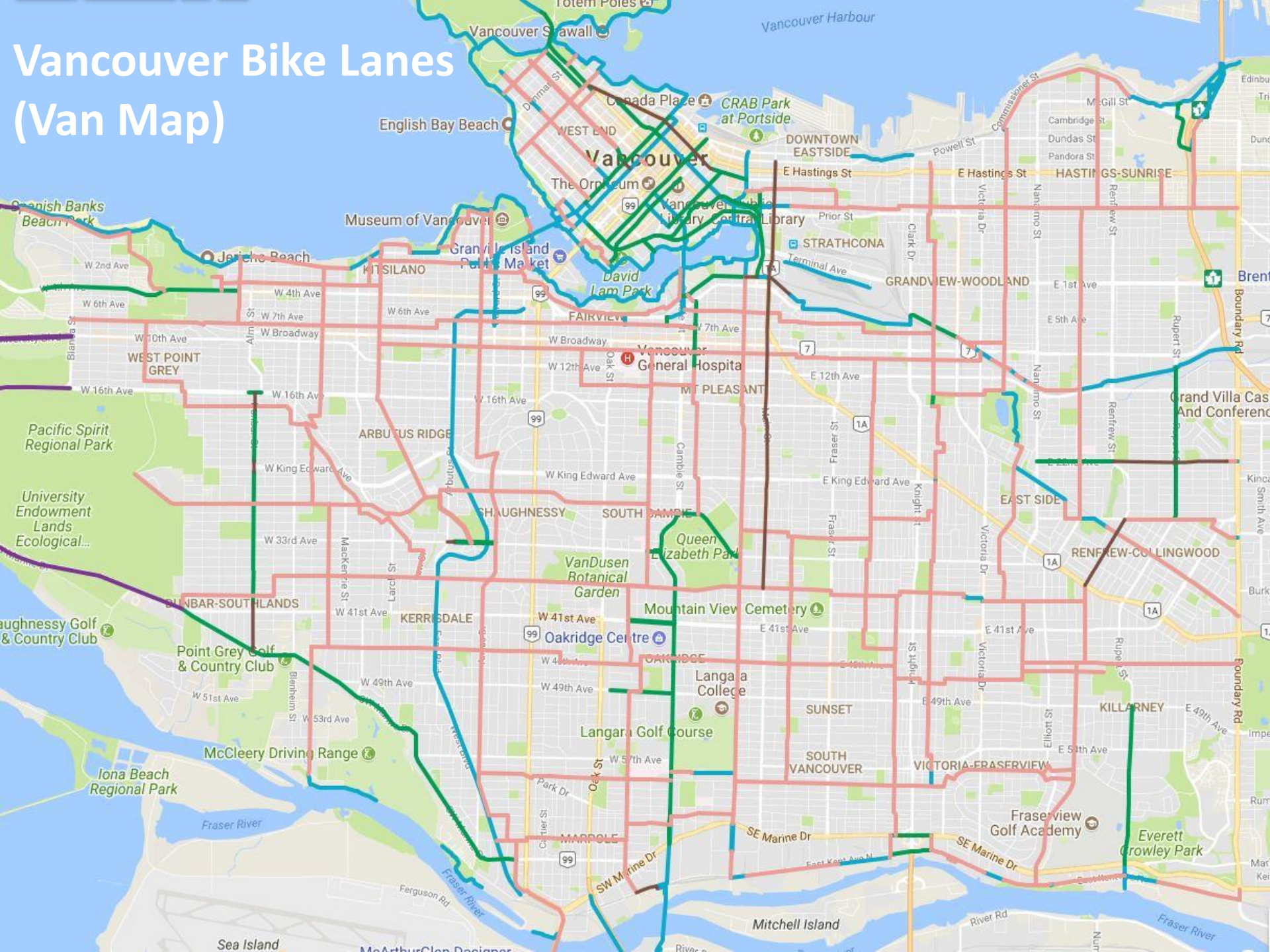
- **Focused stakeholder conversations**
- **Resident & business workshops**
- **Design jams**
  - Internal & external experts
  - Key user groups
- **Public open houses & surveys**



# Appendices

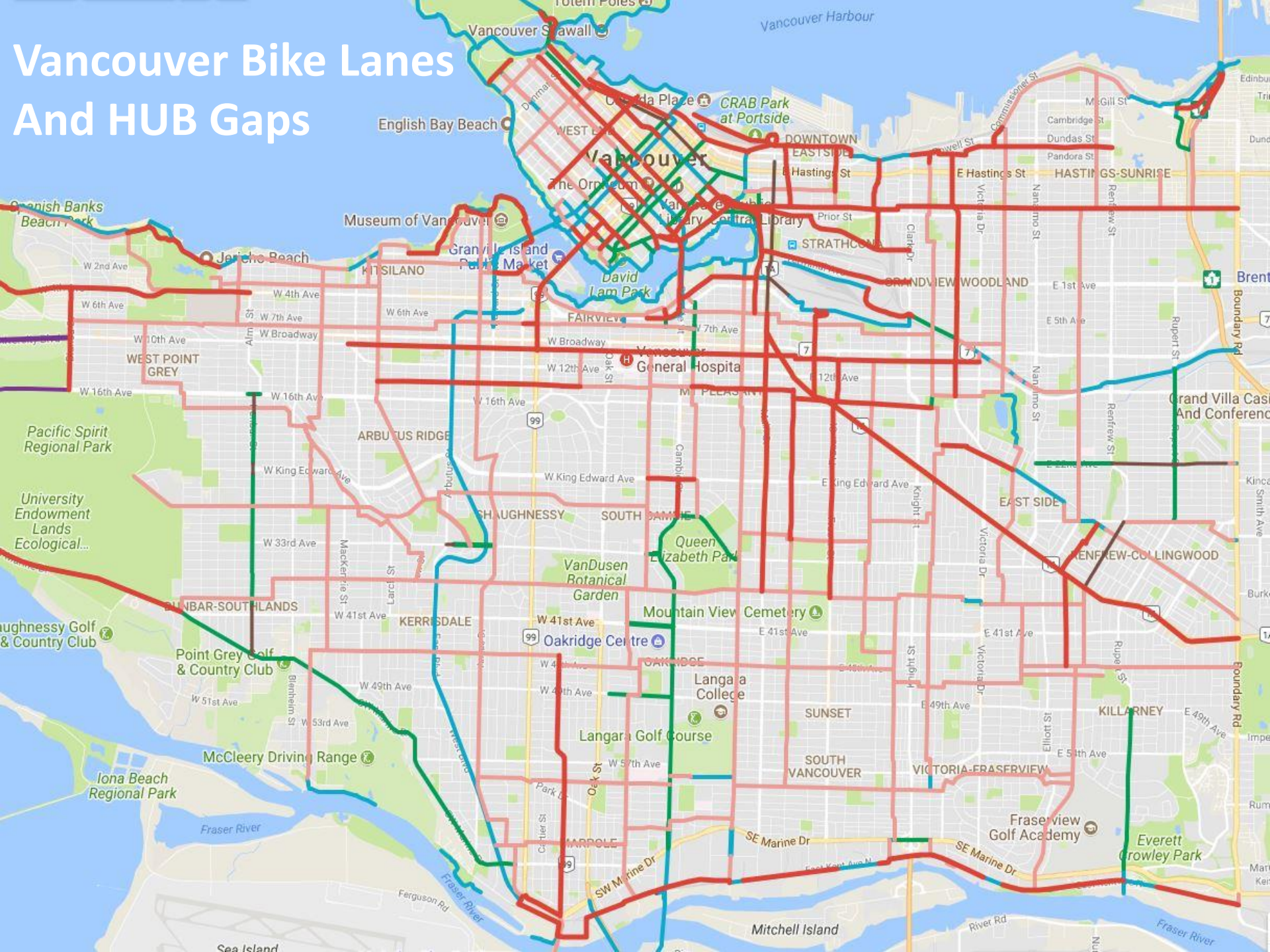


# Vancouver Bike Lanes (Van Map)





# Vancouver Bike Lanes And HUB Gaps





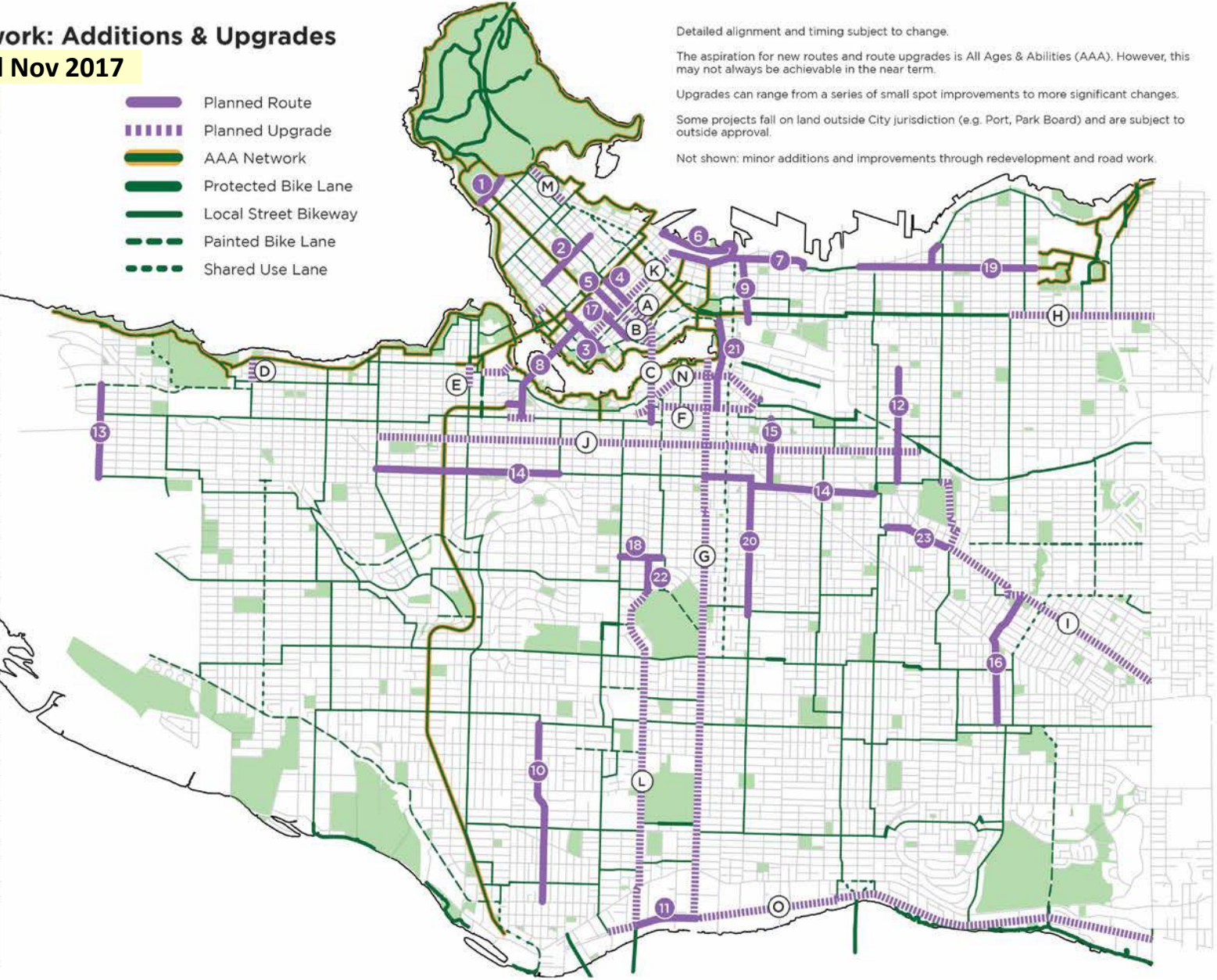
# 5-Year Cycling Network: Additions & Upgrades 2018-2022

Added Nov 2017

Detailed alignment and timing subject to change.  
 The aspiration for new routes and route upgrades is All Ages & Abilities (AAA). However, this may not always be achievable in the near term.  
 Upgrades can range from a series of small spot improvements to more significant changes.  
 Some projects fall on land outside City jurisdiction (e.g. Port, Park Board) and are subject to outside approval.  
 Not shown: minor additions and improvements through redevelopment and road work.

Planned Routes	
1	Park Lane*
2	Bute
3	Drake
4	Smithe
5	Nelson
6	West Waterfront Road**
7	Water-Alexander-Powell
8	Granville Bridge
9	Gore
10	Hudson
11	Kent
12	Commercial
13	Blanca
14	14th Ave
15	St. George Rainway
16	Duchess-Wales*
17	Helmcken
18	King Edward
19	Pandora-Semlin
20	Prince Edward
21	Quebec
22	Cambie
23	Stainsbury
Planned Upgrades	
A	Smithe
B	Nelson
C	Cambie Bridge
D	Highbury
E	Cypress
F	5th Ave
G	Ontario
H	Adanac
I	BC Parkway
J	10th Ave
K	Richards
L	Cambie
M	Georgia
N	1st Ave
O	Kent

- Planned Route
- Planned Upgrade
- AAA Network
- Protected Bike Lane
- Local Street Bikeway
- Painted Bike Lane
- Shared Use Lane

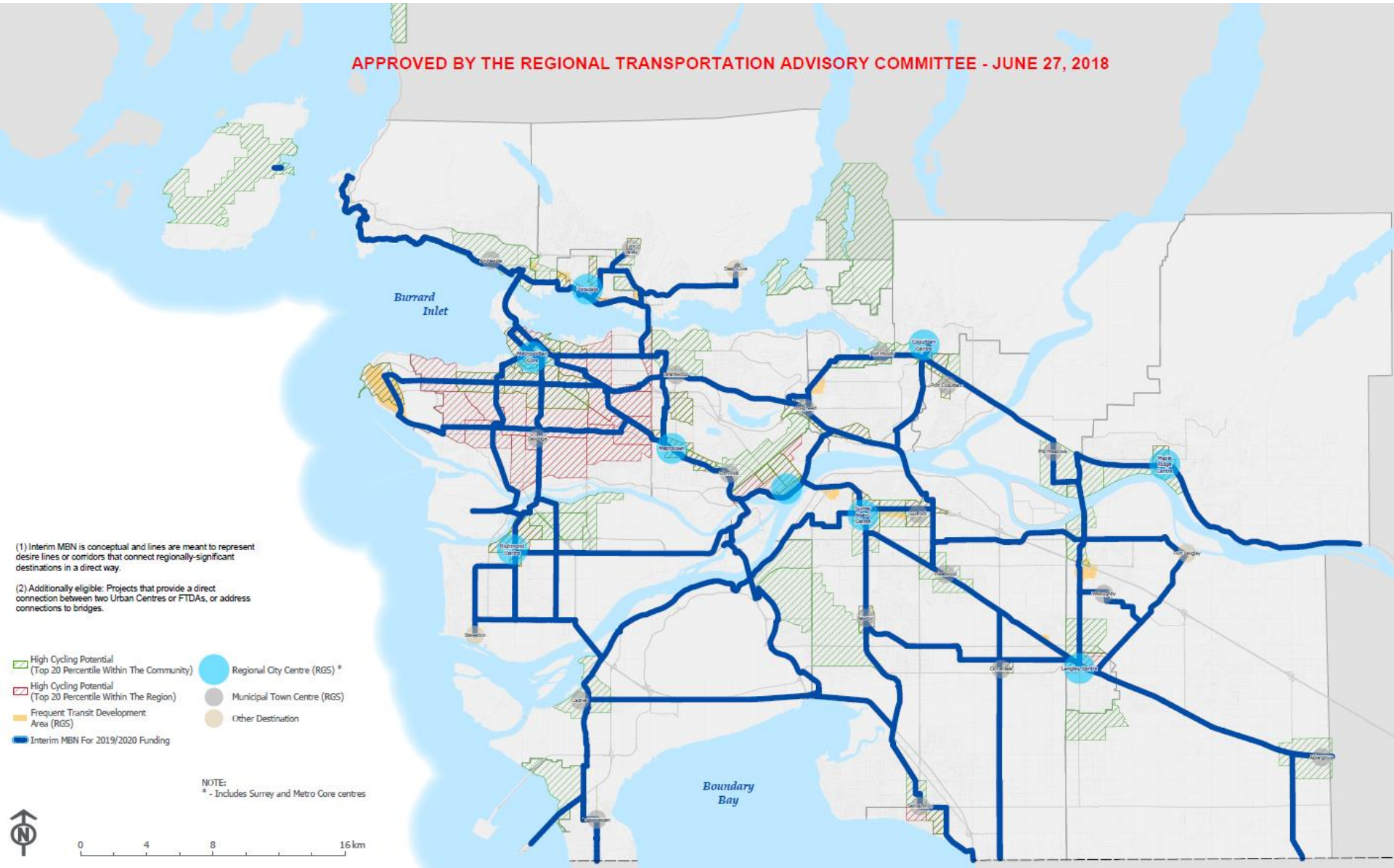


\* Park Board jurisdiction  
 \*\* Port Authority jurisdiction  
 Number/Letter sequence does not imply priority



# Translink Major Bikeway Network (MBN)

APPROVED BY THE REGIONAL TRANSPORTATION ADVISORY COMMITTEE - JUNE 27, 2018



(1) Interim MBN is conceptual and lines are meant to represent desire lines or corridors that connect regionally-significant destinations in a direct way.  
(2) Additionally eligible: Projects that provide a direct connection between two Urban Centres or FTDA's, or address connections to bridges.