

Vancouver-UBC Local Committee

March 15th, 2022

Web Meeting via Zoom

For a better web meeting:

- We may have many people online, so please mute your phone or microphone when you are not speaking
- Ensure your name is displayed so that we know who you are
- We have a volunteer co host who will watch the text chat queue and help make sure people can ask questions
- Take advantage of the text chat function; ask questions, raise your hand to speak, or provide feedback on a topic. This gives us a text log for the preparation of our minutes. Test it out before 6:30 pm by letting us know you are online, just enter your first name. This will help us with the minutes.
- If you are not logged in to the Zoom meeting you won't see the presentation, but you can access it on our wiki, [here](#) and follow along.
- You can use computer audio (microphone and speaker), or dial in separately

Meeting Agenda

- Welcome, introductions, and announcements
- Updates from Working Group leads
- Deep Dive – the Possibility of Cycle Highways in Metro Vancouver
- Consultations Update
- Regional Advisory Committee (RAC) update
- Other Business
- Meeting Adjourns
- Break Out Rooms (8:00 pm – 8:30 pm)
 - Cycling in Parks
 - General Topics

Welcome and Introductions

- Welcome to new attendees
- Anything to add to the agenda?
- Minutes from February

Announcements

- Van Connect – please report bike lane maintenance issues, particularly debris and/or flooding
- [HUB Cycling Bike Awards](#) were held Feb 24 via Zoom. The City of Vancouver won an award for the Richards Street Bikeway
- [VSB Youth Sustainability Conference](#) April 25th; opportunity to participate. Volunteers required.
- HUB Cycling has released a new [Bikes Mean Business](#) resource to support local committee advocacy work.
- Check out this video on different networks for different transportation modes: [“The Bike Lanes You Can’t See”](#)
- At the end of our regular meeting, at 8 pm, we will have several Zoom breakout rooms set up, for some of our working groups.
- Any other announcements?

Updates from Working Group Leads

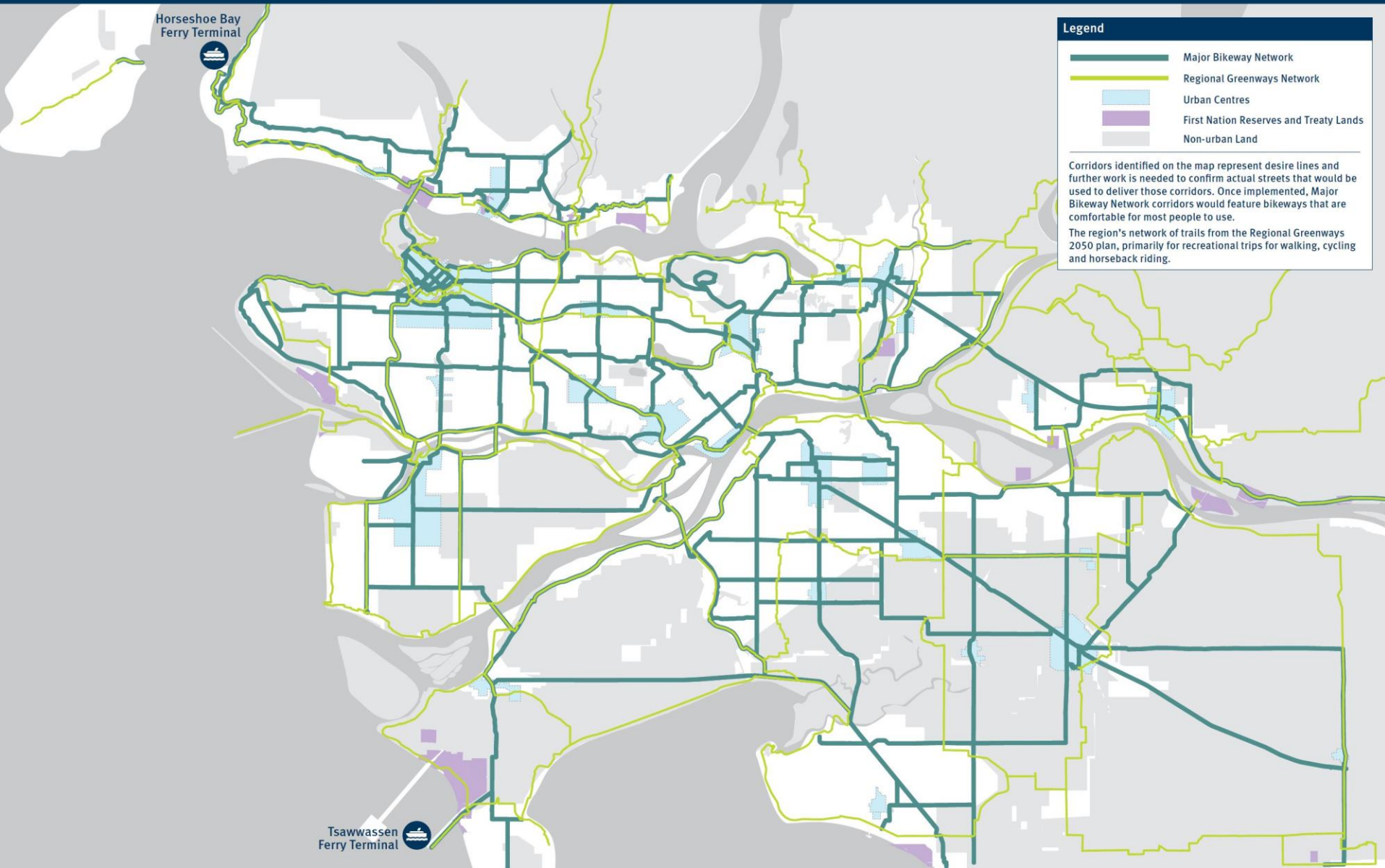
- Assessment Rides – Jeff, Philippe – Richard
St/Smithe St ride planned. Future assessment rides?
- Cycling in Parks – Lisa - Kits Beach Park path
stakeholder meetings, PB staff meeting.
- Arbutus Greenway – Stan
- Broadway Subway – Jeff, Anthony – Engagement
with the Business Stakeholders Advisory Group, and
Broadway Subway Project Traffic Advisory Group
- East Van Greenway – Clark – Portside Greenway
coming to public consultation in early 2022
- Vancouver Municipal Election – Lisa – preparing for
the 2022 election

Deep Dive – The Possibility of Cycle Highways in Metro Vancouver

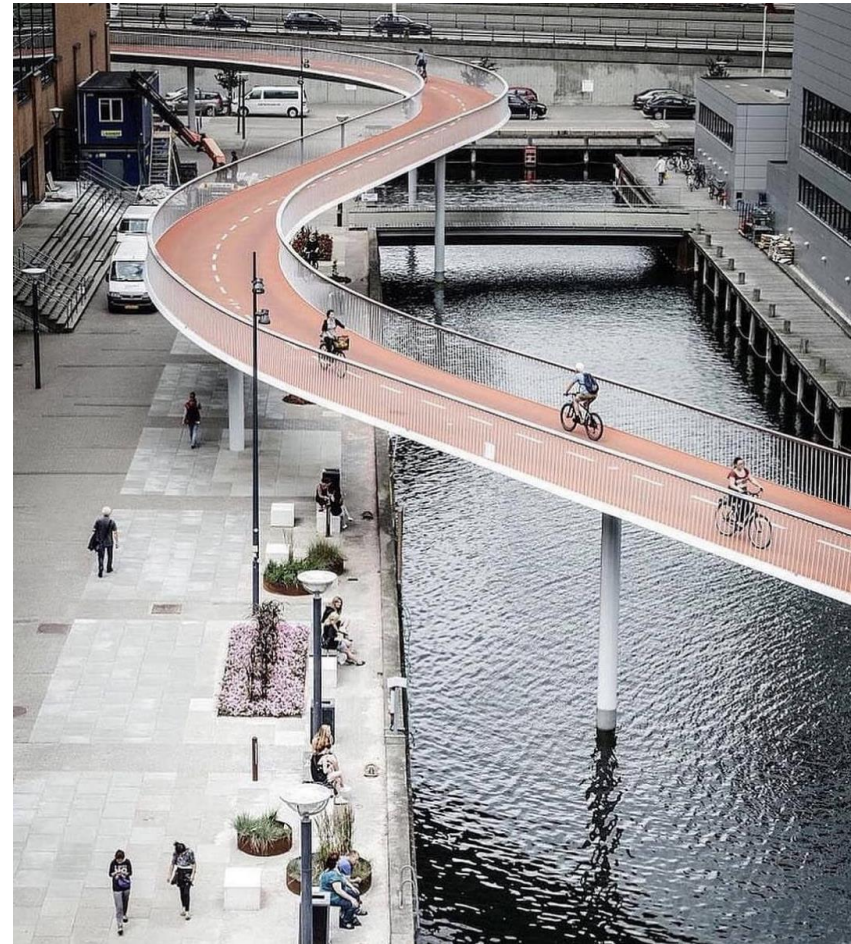
- Working group led by our staff research team
- This is a short introduction to the work
 - Presentation to Local Committee was March 14
 - Report is about to be released
 - This report is to get the conversation started, not to define where and where there should not be cycle highways
- Cycle Highways are characterized by their purpose, not just their design
- This work intersects with work on the Translink Major Bikeway Network, the Metro Vancouver Greenway Plan, MoTI Cycle Route Gap Analysis, and municipal cycle route plans

Translink Major Bikeway Network October 2021

Transport 2050 Regional Cycling Network



What Are Cycle Highways?



What Are Cycle Highways?



What Are Cycle Highways?



E & N Rail Trail, Victoria BC

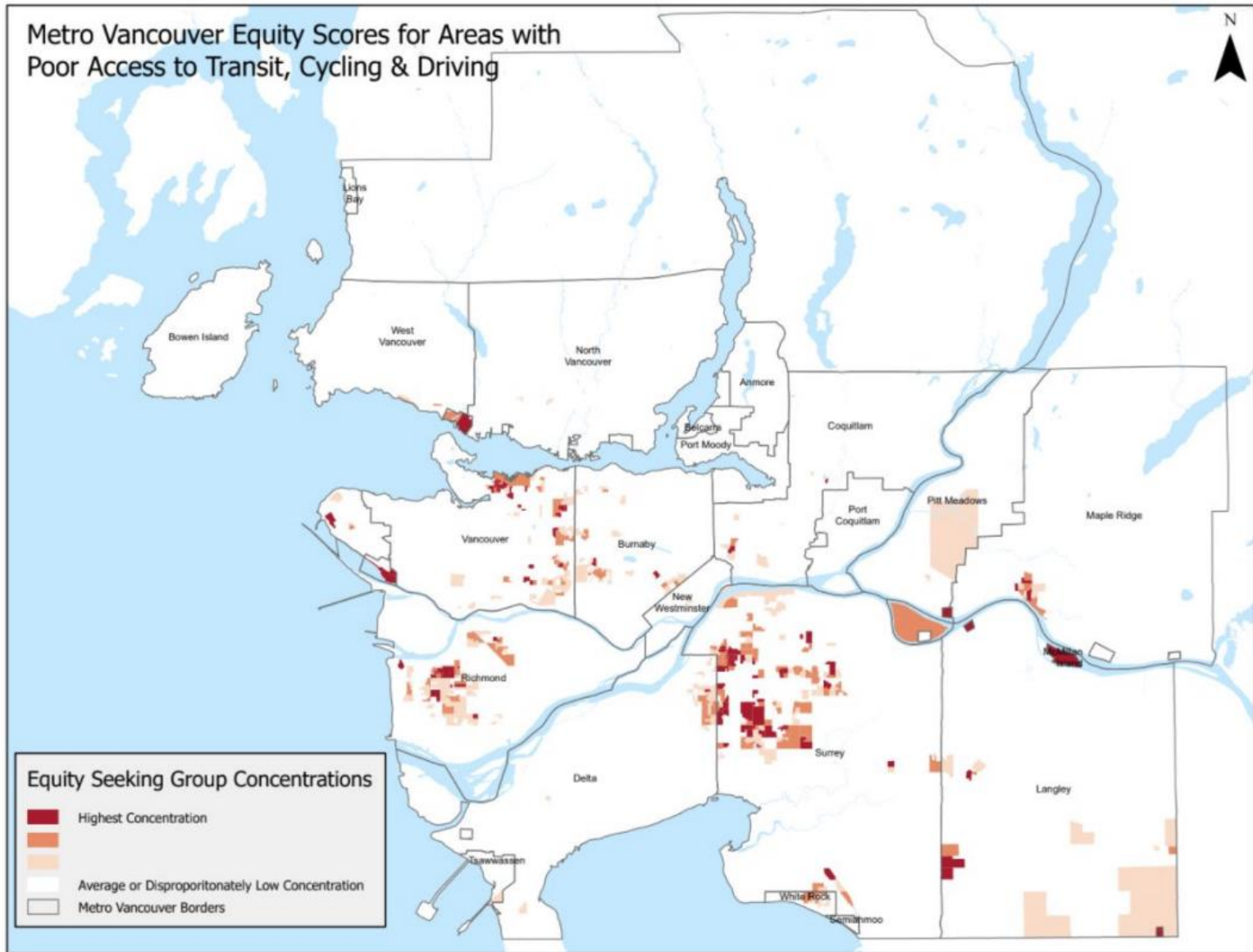
Cycle Highway Design Characteristics

- Directness
- Longer lengths, generally greater than 5 km
- Provide connections between major destinations
- Capacity for higher and more consistent speeds
- Mode separation and path types
- Intersection treatments
- Consistent and ample widths
- Consistent and high-quality paving and lighting
- Minimizing and alleviating gradients
- Clear signage and branding
- Regular maintenance and winter service
- Service stations, eg bike pumps, water, bike parking

Cycle Highways: HUB Definition

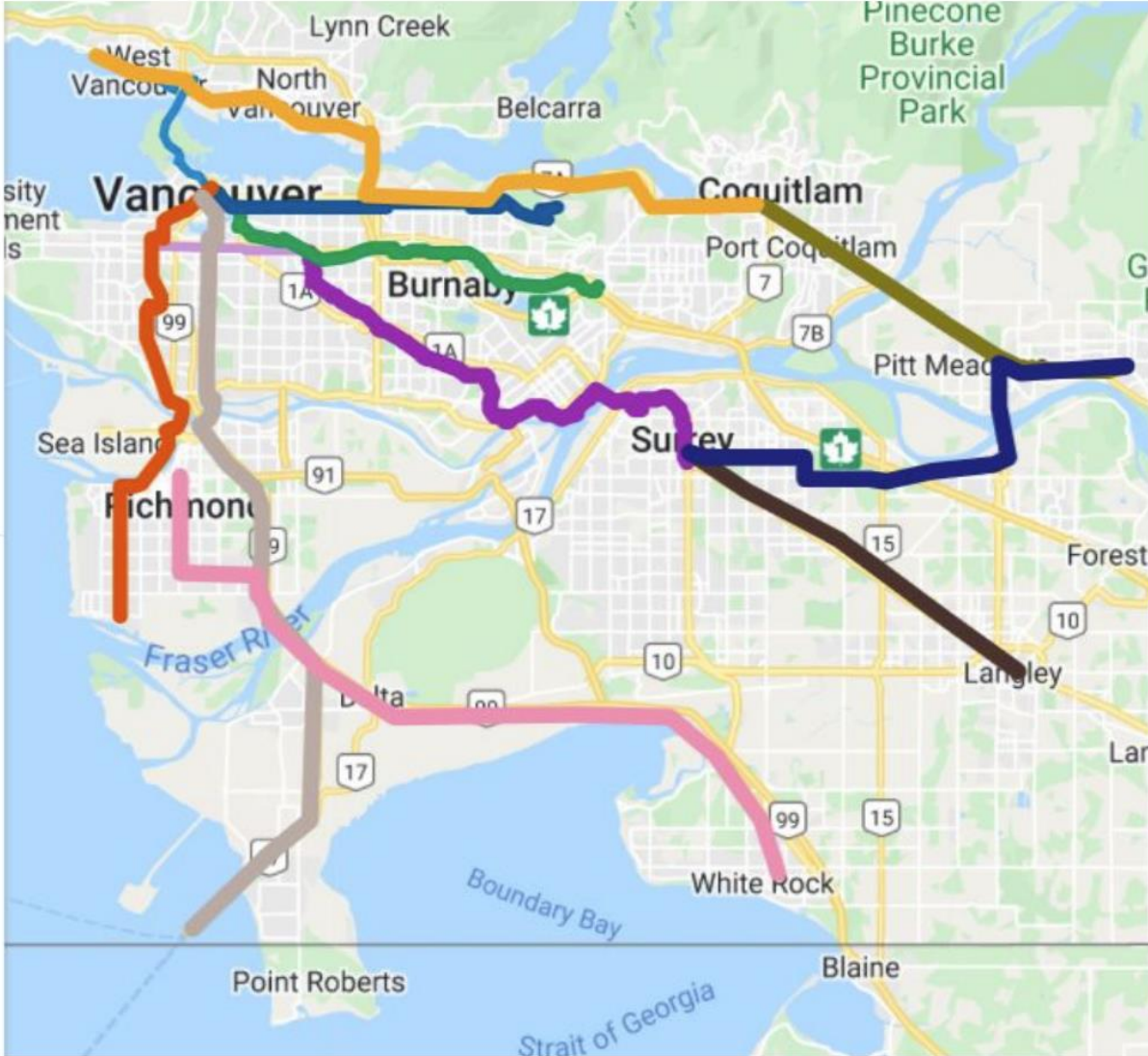
Cycle highways are the highest quality bike routes, covering long distances (5km+) and providing regional connections between major destinations. They are direct, paved, protected, lit, of ample width, and with intersections prioritizing people cycling. This, along with clear signage, branding, and regular maintenance, ensures cycle highways are safe, comfortable, and easy to use for people of all ages and abilities at all times of the day and year.

Cycle Highways – Equity Analysis



Cycle Highways – GIS Analysis

- Existing routes
 - Individual styles
 - Route 1 - BC Parkway
 - Route 1 - Extension
 - Route 2 - Central Valley Gree...
 - Route 3 - Adanac & FUB
 - Route 3 - Extension
 - Route 4 - Vancouver to Steve...
- Corridors
 - Individual styles
 - Corridor 1 - Downtown to Tsa...
 - Corridor 2 - Coquitlam to Ma...
 - Corridor 3 - Tri-Cities to Nort...
 - Corridor 4 - Surrey to Langley
 - Corridor 5 - Surrey to Maple ...
 - Corridor 6 - White Rock to Ri...

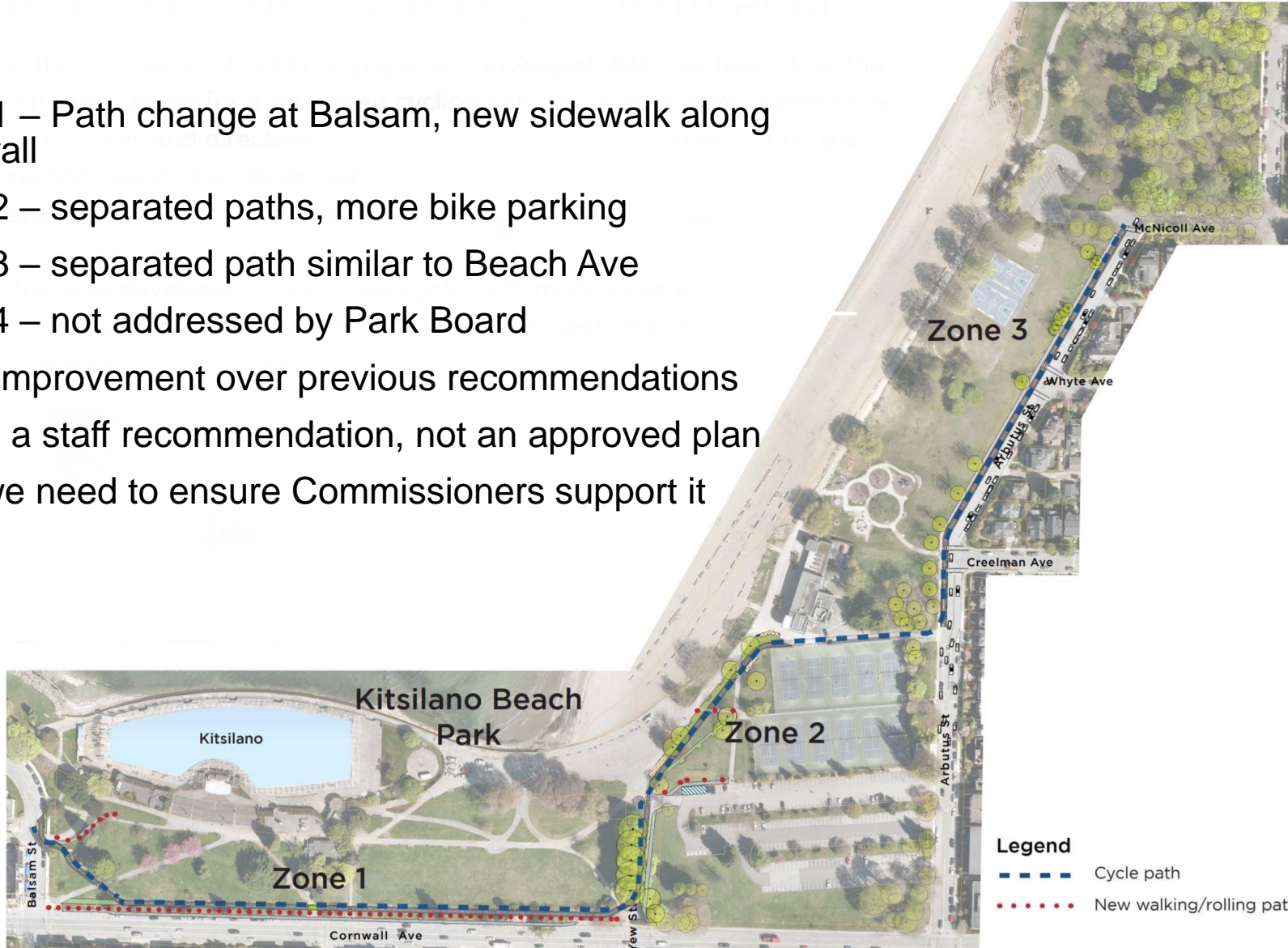


Consultations – Kits Beach Park Seaside Greenway improvements

- Round 3 – Preferred cycle path route announced
- Stakeholder Engagement Sessions held
- Feedback provided on specific aspects:
 - Strong support for routing, separation between modes
 - Dealing with Zone 4 (connecting to Ogden)
 - Intersection of the service lane and Arbutus protected lanes
 - Good to see some unnecessary pavement being removed, suggest more of this work be included.
- This is still an interim solution (eg 5 years, until the Kits Beach Park Master Plan is completed)

Consultations – Kits Beach Park Seaside Greenway improvements

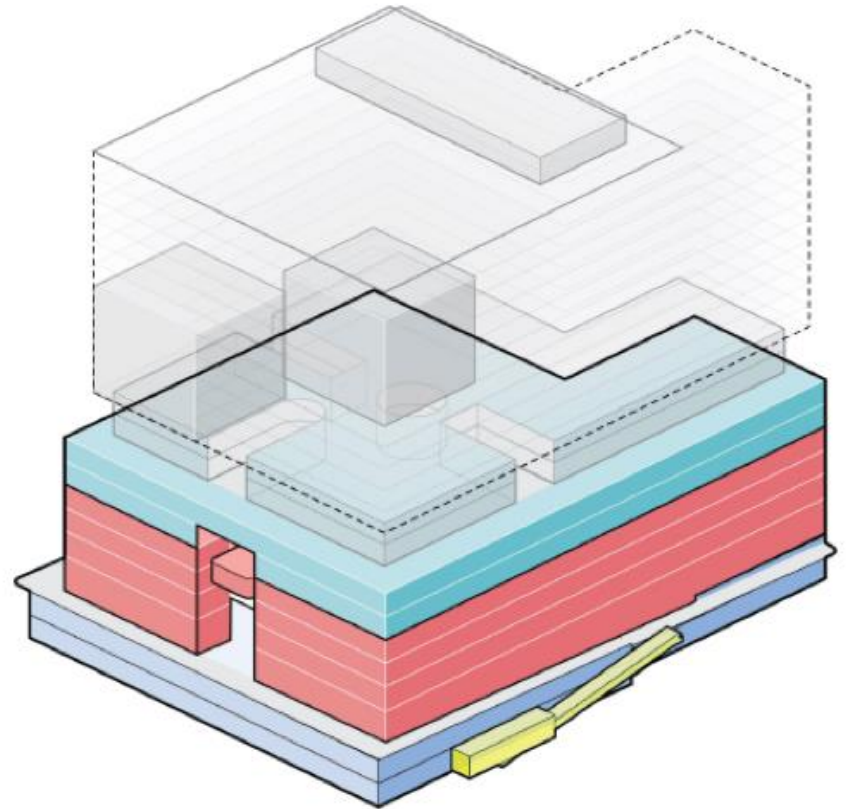
- Zone 1 – Path change at Balsam, new sidewalk along Cornwall
- Zone 2 – separated paths, more bike parking
- Zone 3 – separated path similar to Beach Ave
- Zone 4 – not addressed by Park Board
- Huge improvement over previous recommendations
- This is a staff recommendation, not an approved plan
- Now we need to ensure Commissioners support it



Consultations – The Bay Building

- Redevelopment of The Bay building at Georgia and Granville. Currently proposed, not yet approved.
- Will include no additional vehicle parking (the separate parkade on Seymour St has been sold for redevelopment)
- Improved access to the subway station, with an open arcade for access from Granville or Seymour
- Green Mobility Hub to connect walking, cycling, and transit, with a planned secure 1500 bike parkade, accessed off a new Seymour Street ramp, with a motorized ramp for exit

Consultations – The Bay Building



Consultations – The Bay Building



awadbrign - HBCHB - Final - Oct. 26-27/2021 - rev. Nov. 2/21

Consultations – The Bay Building

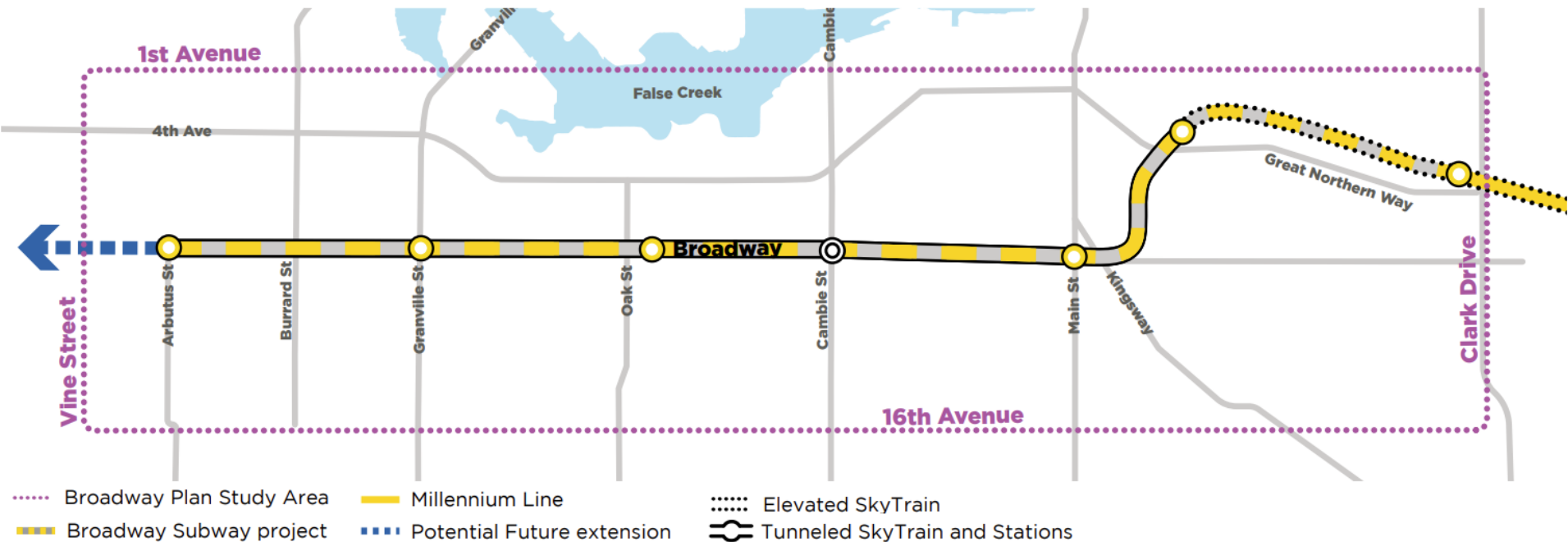


Consultations – The Bay Building



Consultations – The Broadway Plan

- Scope: The Broadway Corridor, from Clark Drive to Vine St, between 1st Ave and 16th Ave



Consultations – The Broadway Plan

- The plan seeks to leverage the opportunity of the Broadway Subway by coordinating planning with a review of land use, housing, transportation, and infrastructure
- The draft plan continues to not support cycling on Broadway, or to provide safe and comfortable cycling access to key subway stations
- The [Phase 4 Draft Plan](#) has been released, will go to Council for approval in May 2022
- [An online survey](#) is open until March 21st

Consultations – HUB Regional Advisory Committee (RAC)

- Massey Tunnel Shuttle relocation due to interchange improvements at Hwy 17A (south)
- Steveston Interchange improvements – contractor selected, work starting now in advance of the work on a new crossing
- Main GMC contract to be awarded. Proposed tunnel with cycle paths
- [Hwy 1 North Shore Corridor Study](#) released by MoTI. Includes consideration of cycling along the corridor.

Consultations – Portside Greenway

City Greenways Plan

- ① Seaside
 - ② Lagoon
 - ③ Central Valley
 - ④ Granville
 - ⑤ Downtown Historic Trail
 - ⑥ Carrall
 - ⑦ Portside
 - ⑧ Midtown Way
 - ⑨ Parkway
 - ⑩ Spirit Trail
 - ⑪ Ridgeway
 - ⑫ Arbutus
 - ⑬ Ontario
 - ⑭ Eastside Crosscut
 - ⑮ Masumi Mitsui
 - ⑯ Fraser River Trail
 - ⑰ City Centre
 - ⑱ Comox-Helmcken
- Greenway
Constructed or in progress
 - Proposed Greenway
Exact route to be determined through public consultation and detailed study
 - Bikeway
Constructed or in progress
 - TransCanada Trail

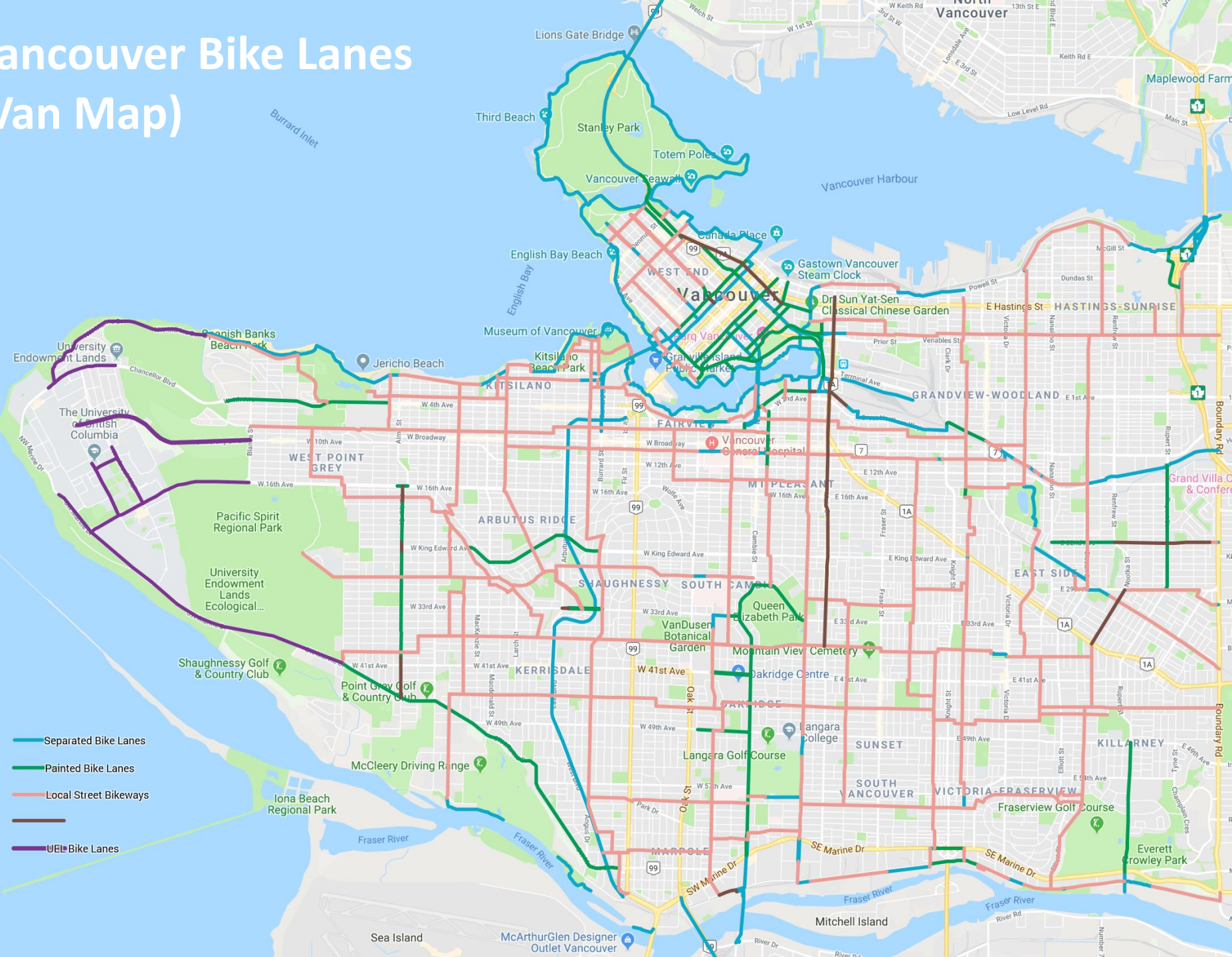


Breakout Rooms

- We have set up several Breakout Rooms so that our working groups can continue with smaller group discussions.
- Each will have a moderator/leader. The rooms will be open for 30 minutes.
- Please select which one you would like to go to
 - Cycling in Parks (Lisa)
 - General Discussion (Jeff)

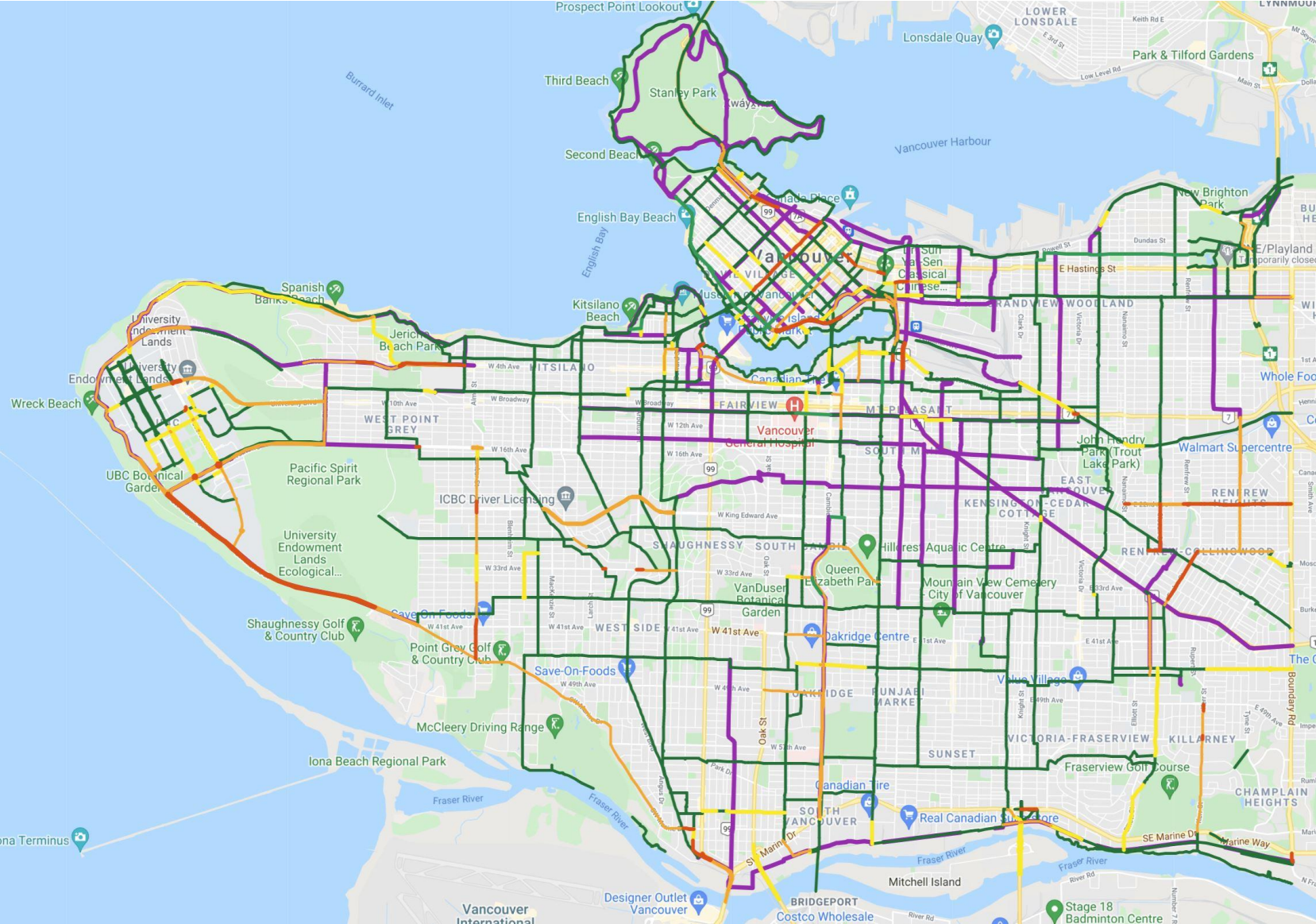
Appendices

Vancouver Bike Lanes (Van Map)



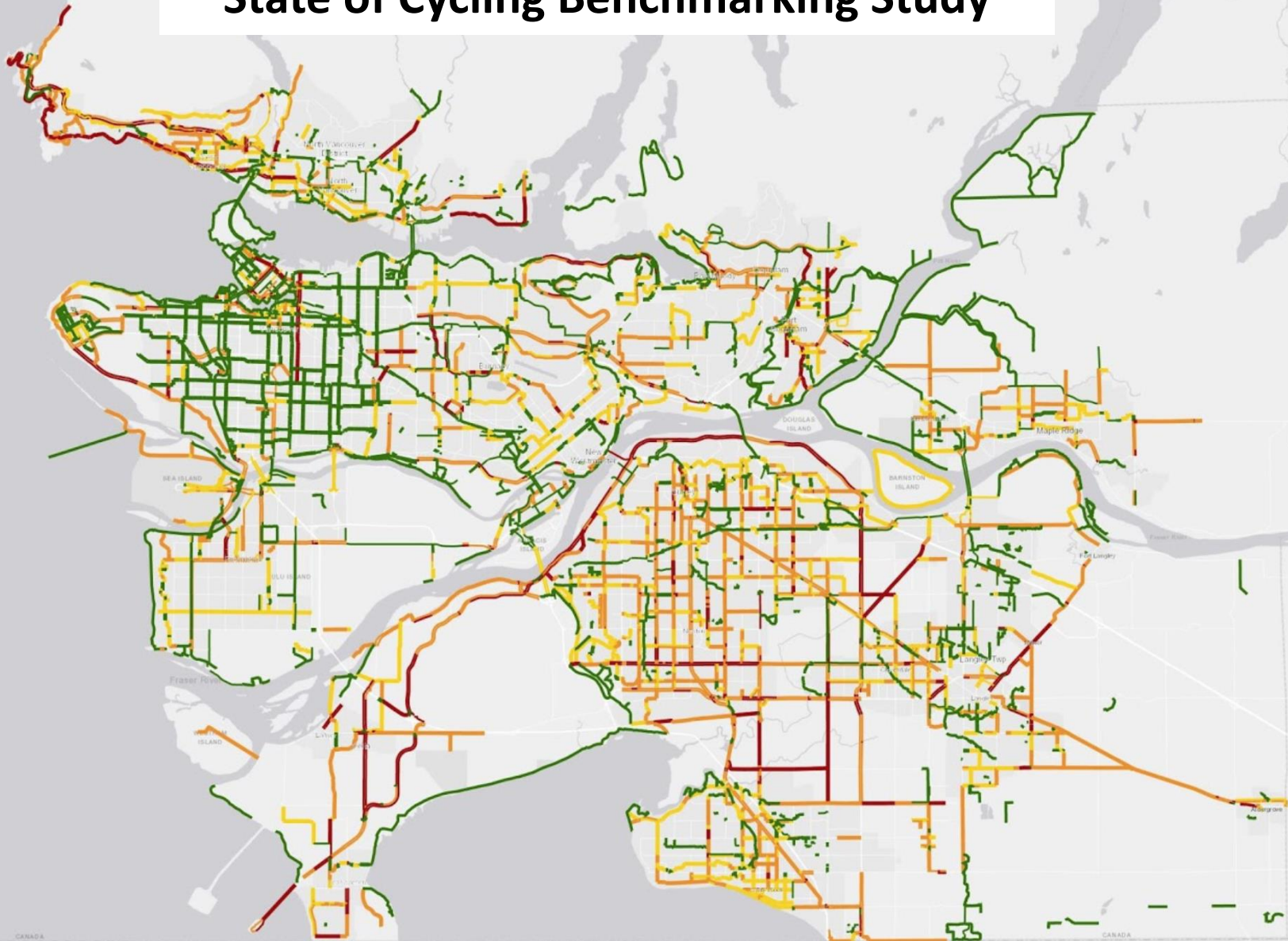
- Separated Bike Lanes
- Painted Bike Lanes
- Local Street Bikeways
- UEL Bike Lanes

Prototype Gap Map (Vancouver/UBC) with SoC Route Data (January 2022)



Regional Bikeway Map

State of Cycling Benchmarking Study



CoV Cycling Network Improvement Budget

5-Year Cycling Network: Additions & Upgrades 2018-2022 Added Nov 2017

Detailed alignment and timing subject to change.

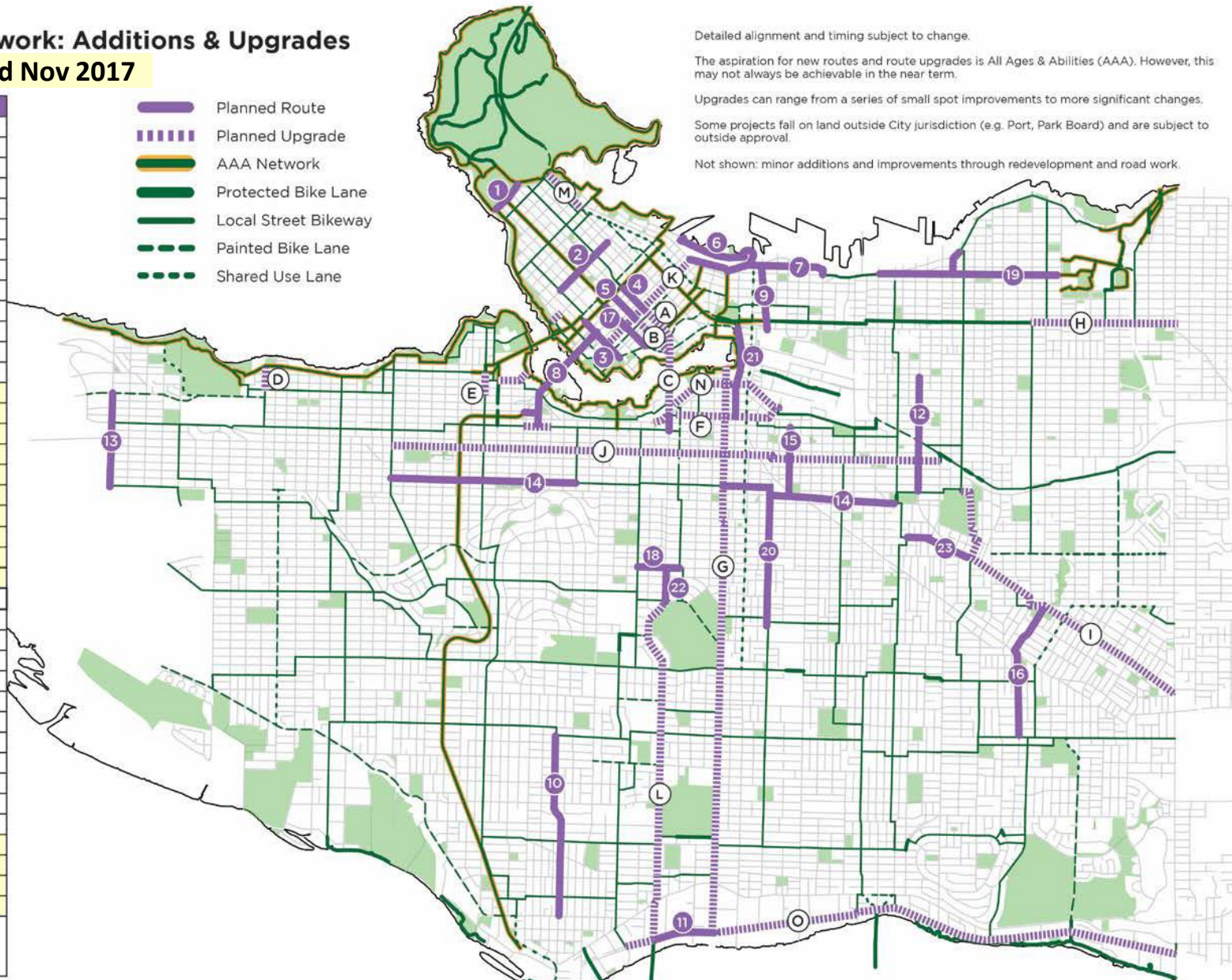
The aspiration for new routes and route upgrades is All Ages & Abilities (AAA). However, this may not always be achievable in the near term.

Upgrades can range from a series of small spot improvements to more significant changes.

Some projects fall on land outside City jurisdiction (e.g. Port, Park Board) and are subject to outside approval.

Not shown: minor additions and improvements through redevelopment and road work.

- Planned Route
- Planned Upgrade
- AAA Network
- Protected Bike Lane
- Local Street Bikeway
- Painted Bike Lane
- Shared Use Lane



Planned Routes	
1	Park Lane*
2	Bute
3	Drake
4	Smithe
5	Nelson
6	West Waterfront Road**
7	Water-Alexander-Powell
8	Granville Bridge
9	Gore
10	Hudson
11	Kent
12	Commercial
13	Blanca
14	14th Ave
15	St. George Rainway
16	Duchess-Wales*
17	Helmcken
18	King Edward
19	Pandora-Semlin
20	Prince Edward
21	Quebec
22	Cambie
23	Stainsbury

Planned Upgrades	
A	Smithe
B	Nelson
C	Cambie Bridge
D	Highbury
E	Cypress
F	5th Ave
G	Ontario
H	Adanac
I	BC Parkway
J	10th Ave
K	Richards
L	Cambie
M	Georgia
N	1st Ave
O	Kent

* Park Board jurisdiction
 ** Port Authority jurisdiction
 Number/Letter sequence does not imply priority

CoV Cycling Map – Fall 2021 Update



Protected Bike Lane
People cycling are protected from motor vehicles by physical barriers such as planters, curbs, or bollards; also includes off-street paths

Local Street Bikeway
People cycling share the roadway with motor vehicles on a relatively quiet neighbourhood street

Painted Bike Lane
People cycling have a dedicated painted lane, typically between the curb or parking lane and a driving lane

Shared Use Lane
People cycling share a lane with vehicles on a busy street; these lanes fill network gaps but are not comfortable for most

AAA Network
The most comfortable parts of the network are designated as All-Ages-and-Abilities (AAA) which are emphasized by the yellow highlighted routes. The AAA Network is a connected series of mostly protected bike lanes and some local street bikeways with lower traffic volumes.

- Map Symbols**
- Moderate Uphill Route
 - Steep Uphill Route
 - One Way Bike Route
 - Mobi Station Zone (boundary contains all public bike share stations, including Downtown & Stanley Park)
 - SkyTrain Station / Bus Loop
 - Bike Parkade
 - Train Station
 - Bus Station
 - SeaBus
 - Passenger Ferry
 - Hospital
 - Community Centre
 - School

Pavement Markings

Bicycle
Indicates a bicycle route or lane

Special Reserved Lane
Indicates a reserved lane for the devices noted on associated signs or pavement markings. When combined with a bicycle this symbol indicates a dedicated bicycle lane. People cycling in the City of Vancouver are allowed to ride in these lanes.

Narrow (Shared Roadway)
Indicates a roadway shared with motor vehicles. The arrow shows where a people cycling should generally position themselves

Bicycle with Arrow
Indicates the bike route direction is changing

Bicycle Pathway
Indicates an off-street cycling pathway

Shared Pathway
Indicates an off-street pathway shared by people walking and cycling

Pavement Markings (cont.)

Crosswalk (Elephants Feet)
Identifies the area where people biking may be crossing to provide wayfinding along protected bike lanes at intersections.

Green Paint
Highlights potential conflict areas with motor vehicles. Commonly used along protected bike lanes at intersections and driveways.

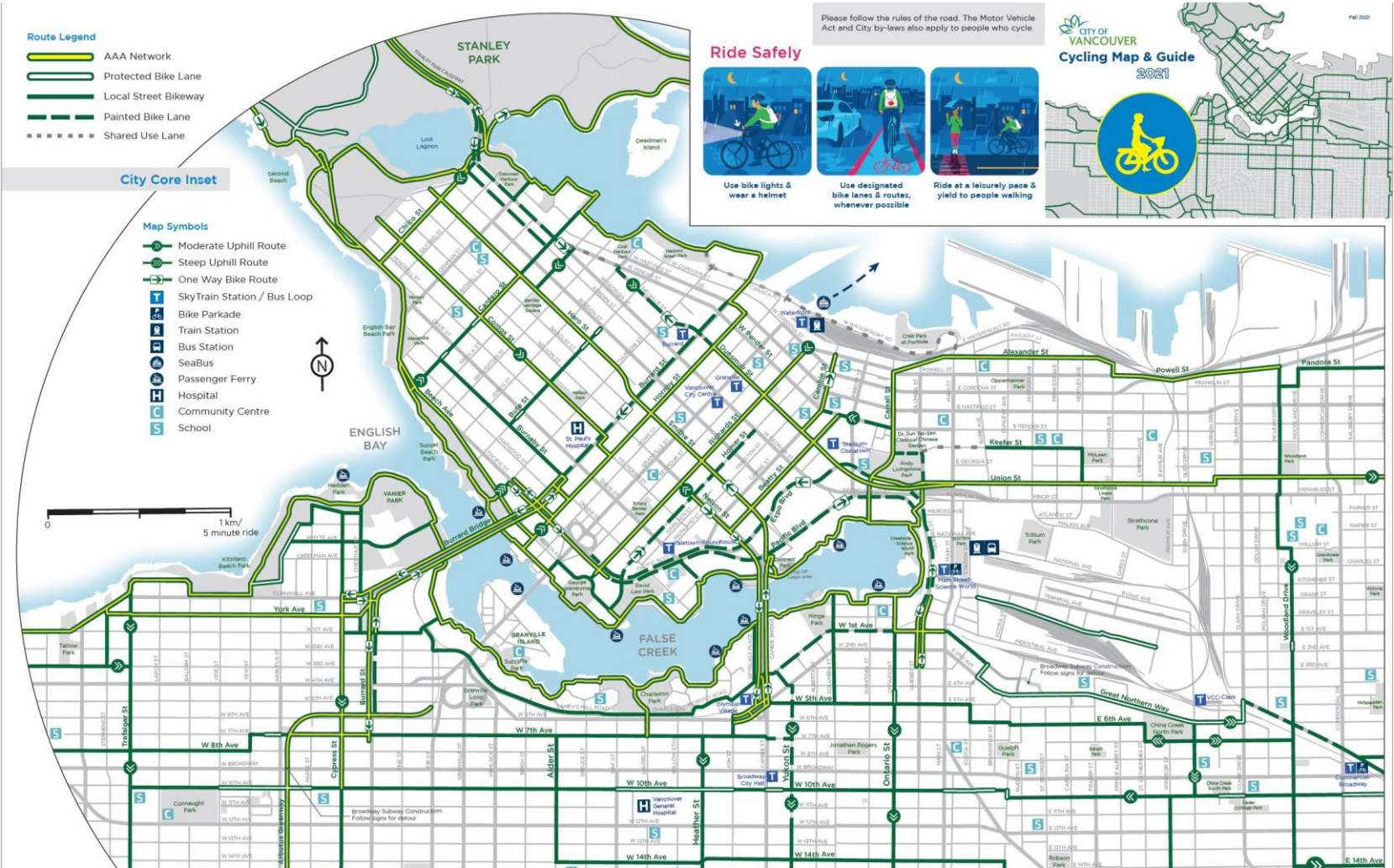
Bicycle Box
Indicates where people cycling should position themselves at a red signal, allowing them to turn left, right, or go straight in advance of other vehicles.

Bicycle Signal
Dedicated signal for people cycling

Turning Left Using a Bike Box
1) Go straight through the intersection when the signal is green and wait in the turn box
2) Proceed left across the intersection when the signal changes

Disclaimer of responsibility: This map is produced as a guide to cycling routes in the City of Vancouver. The City, its employees, officers, directors and representatives do not guarantee the accuracy of any information contained therein nor warrant the safety of any route, highway, road, street, designated cycling route or other shown in the map or information.
© 2021 City of Vancouver

CoV Cycling Map – Fall 2021 Update



Mobi by Show Go is Vancouver's public bike share system

- Users can unlock a bike at any station, ride, and return it to any station
- Users can take an unlimited number of trips during their membership period
- Most of the stations have free Wi-Fi

For more info and current station locations:

- Visit www.mobibikes.ca
- Download the "Mobi by Show Go" App
- Call 778-655-1800

Check out the Mobi Station Zone on the Main Map. The boundary contains all public bike share stations, including Downtown and Stanley Park.

Walk + Bike + Roll: Getting Around the Vancouver Way

By walking, cycling, rolling, and taking transit more often, you can:

- Improve your personal health
- Improve the health of your environment
- Alleviate congestion on our streets

vancouver.ca/walkbikeroll

For More Information from the City of Vancouver

Phone/TTY: 3-1-1/7-1-1

Web: vancouver.ca/cycling

Download the cycling map vancouver.ca/cycling

Bike network inquiries & small upgrade projects bikeupgrades@vancouver.ca

Report garbage, graffiti, and much more with the City's [VanConnect](http://vancouver.ca/vanconnect) app vancouver.ca/vanconnect

Micro Mobility: Where can I ride?

	Major Road	Local Road	Protected Bike Lane or Pathway	Sidewalk
Bicycle	✓	✓	✓	x
E-Bike*	✓	✓	✓	x
Moped	✓	✓	x	x
Skateboard** + Push Scooter + Rollerblades + E-Scooter*	x	✓	✓	x
Mobility Scooter	x	x	x	✓
Hoverboard** + E-Skateboard**	x	x	x	x

*With the exception of medical wheelchairs, Vancouver bylaws prohibit the use of motorized devices (e-bikes and e-scooters) on the seawall.
**Curry hoverboards and e-skateboards may not be operated on roads or sidewalks as per the BC Motor Vehicle Act.

Register your Bike to Reduce Theft

It's free and takes only 5 minutes. In the event your bike goes missing, you can activate the police and community to help recover your bike.

Always report a missing bike with police. Better reporting means more returned bikes and helps law enforcement to prioritize their efforts.

www.projects29.com

Bikes on Transit

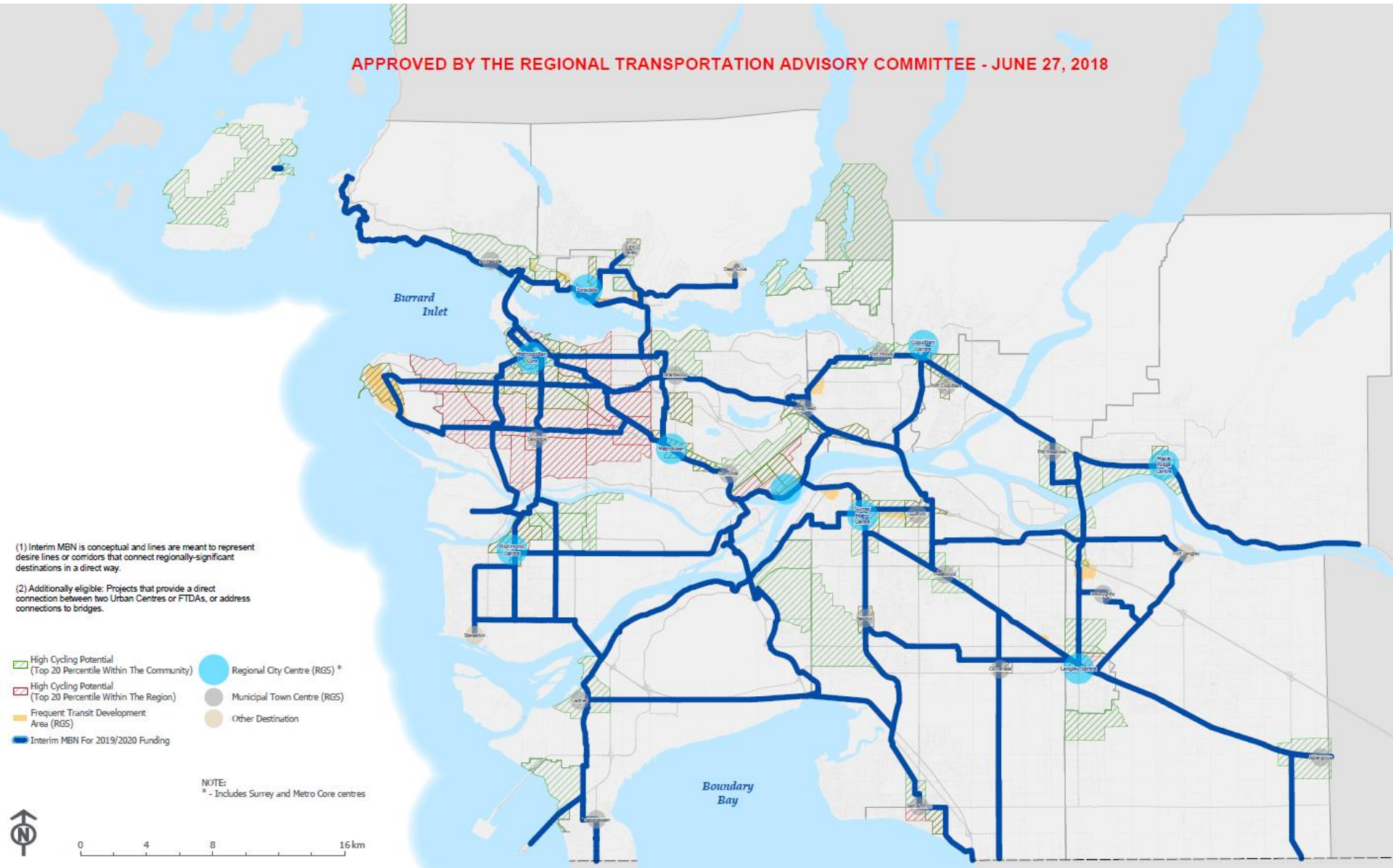
Public transit can help you and your bike go further. You can take your bike on the bus, SkyTrain, SeaBus, and WestCoast Express. Electric and folding bikes are also allowed on the system now (with some restrictions).

Bike Parkades are indoor facilities for registered Compass customers and are available in Vancouver at Main Street-Science World, King Edward, Commercial-Broadway, and Joyce-Collingwood.

For more information visit www.translink.ca

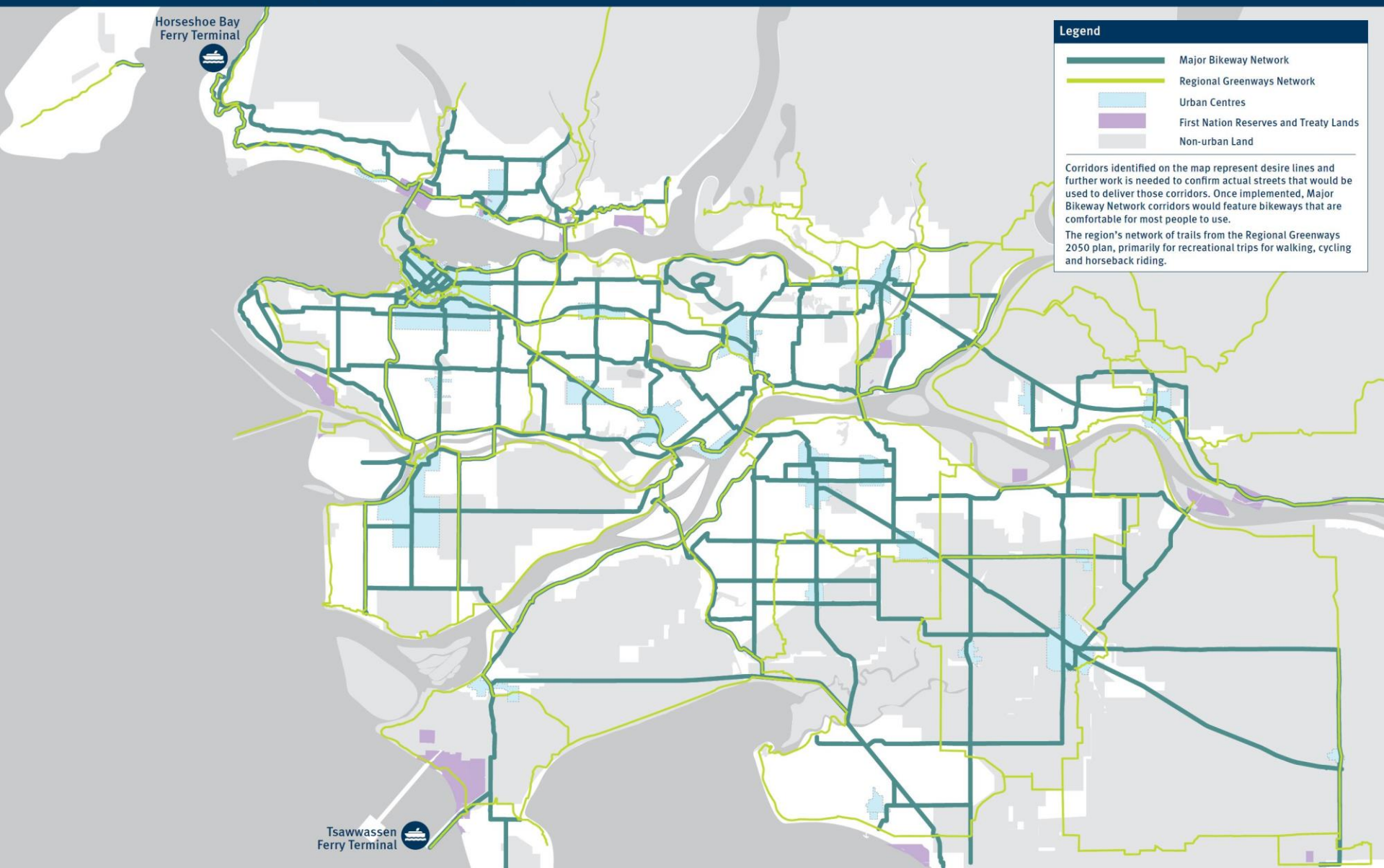
Translink Major Bikeway Network (MBN)

APPROVED BY THE REGIONAL TRANSPORTATION ADVISORY COMMITTEE - JUNE 27, 2018



Translink Proposed MBN October 2021

Transport 2050 Regional Cycling Network



Metro Vancouver Greenway Plan

