

Vancouver-UBC Local Committee

March 21, 2023

Web Meeting via Zoom

For a better web meeting:

- We may have many people online, so please mute your phone or microphone when you are not speaking
- Ensure your name is displayed so that we know who you are
- We have a co host who will watch the text chat queue and help make sure people can ask questions
- Take advantage of the text chat function; ask questions, raise your hand to speak, or provide feedback on a topic. This gives us a text log for the preparation of our minutes. Test it out before 6:30 pm by letting us know you are online, just enter your first name. This will help us with the minutes.
- If you are not logged in to the Zoom meeting you won't see the presentation, but you can access it on our wiki, [here](#) and follow along.
- You can use computer audio (microphone and speaker), or dial in separately

Meeting Agenda

- Welcome and introductions
- Agenda and Action Item Review
- Announcements
- Election for Local Committee Co Chairs
- Updates from Working Group leads
- Consultations Update
- Regional Advisory Committee (RAC) Update and Board Update
- Local Committee Correspondence
- Other Business
- Meeting Adjourns (8:00 pm) Break Out Rooms (8:00 pm)

Welcome and Introductions

- Welcome to new attendees
- Anything to add to the agenda?
- Minutes from February meeting
 - Note that the Angie's CoV presentation on Neighbourhood Traffic Management is now available on our wiki [here](#)

Announcements

- Van311 – please report bike lane maintenance issues to the City
- On March 29th, City staff will present their report on implementing Active Mobility lanes on Broadway, as part of the Broadway Plan. We plan to present our recommendations to Council. Please consider speaking to council in support, or writing a note to councillors expressing your support. More details in the presentation.
- Upcoming Local Committee social rides
- At the end of our regular meeting, at 8 pm, we will have several Zoom breakout rooms set up, for some of our working groups (Cycling in Parks, General Discussion)
- Any other announcements?

Election for Co Chairs

- Jonathan Mak, Community Organizer (HUB Cycling)
- Nominations have been open for one month

Action Item Review

- Van Connect – please report bike lane maintenance issues to the CoV
- Volunteer Opportunity - BEST event at Granville Island May 21. Volunteers needed to help staff the HUB Cycling tent and table. If you are interested and have not let us know already, please note your interest in the text chat.

Updates from Working Group Leads

- Assessment Rides – Jeff, Anthony – SW Marine report to complete. No rides are planned this month. HUB staff are offering a one day Ride Marshall course for those leading rides. Please put your name in the text chat if you are interested in this and have not advised us previously
- Cycling in Parks – Lisa - Kits Park improvements, East Park planning process, Stanley Park protected lanes
- Arbutus Greenway – Stan/Jeff – connections at each end of the Arbutus Greenway
- Broadway Subway – Anthony/Jeff – Traffic advisories being received
- Elections Working Group – Lisa
- East Van Greenway – Clark - More details on the Active Mobility plan are included in the presentation

Consultations – Broadway Active Mobility Lanes - Background

- The Broadway Plan was approved on June 22, 2022, with an amendment to include active travel lanes (this passed unanimously). Staff were directed to report back to Council with options
- At a high level (leaving out any turning lanes):
 - The original plan called for wider sidewalks, for 4 of 6 vehicle lanes to be used for sidewalks, and no bike lanes
 - One option would be to retain the current sidewalks, include 2 bike lanes, and 4 vehicle lanes
 - Another option would be to have the wider sidewalks, include 2 bike lanes, and 2 vehicle lanes

Consultations – Broadway Active Mobility Lanes - Where we are now

- The staff report has not been released yet
- We believe that the staff report will present three options:
 1. Stay with the original plan, and not respond to the council motion
 2. Keep the current sidewalk widths; include two Active Mobility Lanes, and four vehicle lanes
 3. Widen the sidewalks; include two Active Mobility Lanes, and two vehicle lanes

Consultations – Broadway Active Mobility Lanes - Issues

1. Option 1 gives new council an out, and we don't know how this council will vote
2. Station Blocks are distinct from non-station blocks. The Subway project team has a timeline to complete the street in front of each station, so this needs to be decided now. Delaying will add cost and complexity
3. There are lower vehicle volumes towards the western end of this route. Different treatments could be applied to different blocks.

Consultations – Broadway Active Mobility Lanes - Issues

4. Electric kick scooters and other micro mobility devices need to be considered, it isn't just about bikes.
5. Last km deliveries (using cargo bikes) should also be considered
6. The off-Broadway bike lanes do not provide access to businesses along Broadway, or to the new Broadway Subway stations. Neither do the cross streets.
7. We believe that not including Active Mobility lanes will push people on bikes and electric kick scooters onto the sidewalks, particularly at stations. Option 1 is thus the worst option for people walking.

Consultations – Broadway Active Mobility Lanes - Advocacy

- The staff report will be circulated to committee members when we receive it
- Registering to speak at Council
- Email to council members and the mayor
- Meetings with councillors to ask them for their support
- Contact with BIAs to ask them for their support (Mt Pleasant and South Granville)

Consultations - The 2017 Cycling Network Plan

5-Year Cycling Network: Additions & Upgrades

2018-2022 Added Nov 2017

| Planned Routes | |
|------------------|------------------------|
| 1 | Park Lane* |
| 2 | Bute |
| 3 | Drake |
| 4 | Smitha |
| 5 | Nelson |
| 6 | West Waterfront Road** |
| 7 | Water-Alexander-Powell |
| 8 | Granville Bridge |
| 9 | Gore |
| 10 | Hudson |
| 11 | Kent |
| 12 | Commercial |
| 13 | Banca |
| 14 | 14th Ave |
| 15 | St. George Rainway |
| 16 | Duchess-Wales* |
| 17 | Helmscken |
| 18 | King Edward |
| 19 | Pandora-Semlin |
| 20 | Prince Edward |
| 21 | Quebec |
| 22 | Cambie |
| 23 | Stainsbury |
| Planned Upgrades | |
| A | Smitha |
| B | Nelson |
| C | Cambie Bridge |
| D | Highbury |
| E | Cypress |
| F | 5th Ave |
| G | Ontario |
| H | Adanac |
| I | BC Parkway |
| J | 10th Ave |
| K | Richards |
| L | Cambie |
| M | Georgia |
| N | 1st Ave |
| O | Kent |

- Planned Route
- - - Planned Upgrade
- AAA Network
- Protected Bike Lane
- Local Street Bikeway
- - - Painted Bike Lane
- - - Shared Use Lane

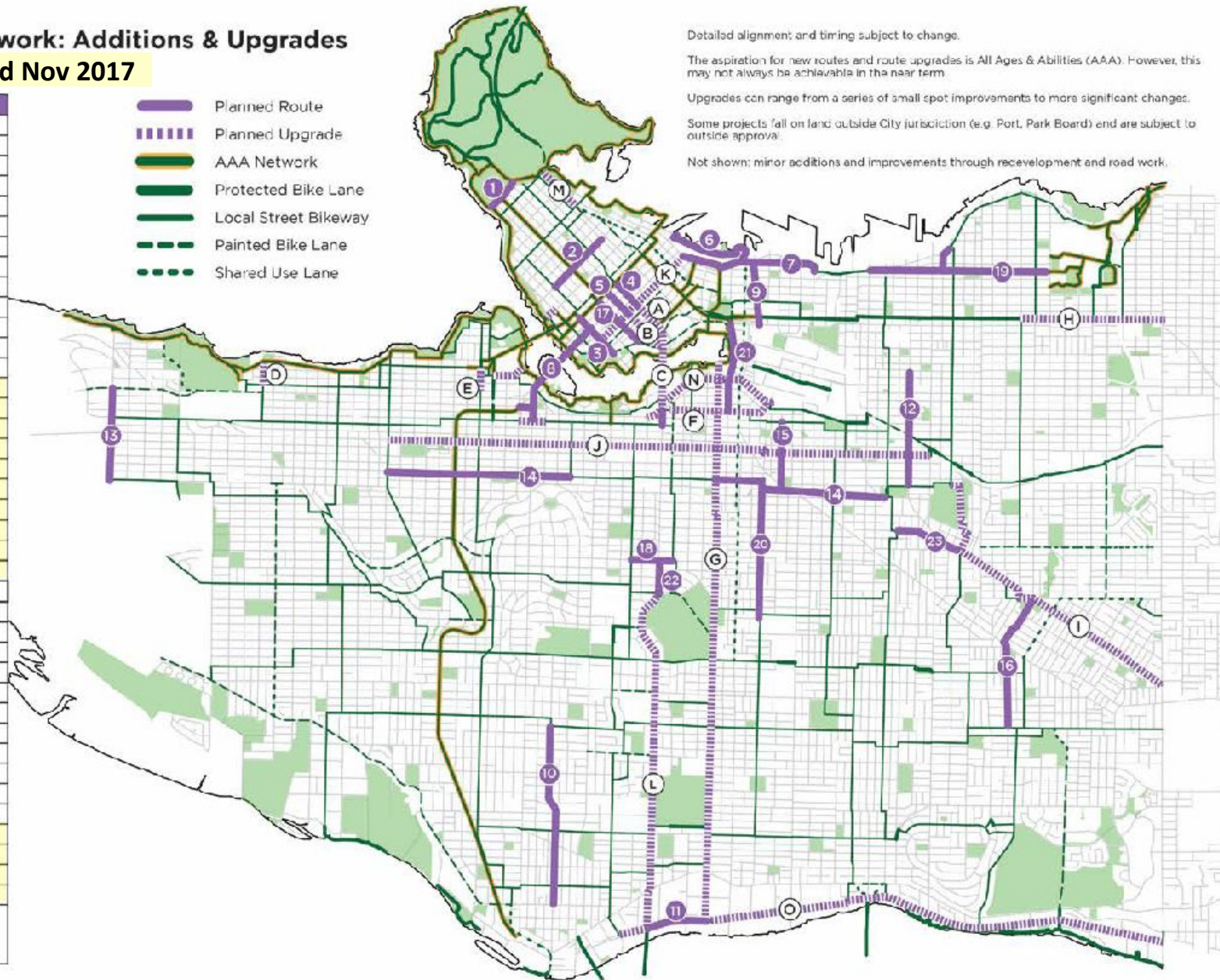
Detailed alignment and timing subject to change.

The aspiration for new routes and route upgrades is All Ages & Abilities (AAA). However, this may not always be achievable in the near term.

Upgrades can range from a series of small spot improvements to more significant changes.

Some projects fall on land outside City jurisdiction (e.g. Port, Park Board) and are subject to outside approval.

Not shown: minor additions and improvements through redevelopment and road work.



Consultations – The 2023 Active Mobility Plan

- Scheduled to be presented to Council in June (TBC)
- Successor to the 2017-2022 Cycling Network plan
- We provided input to the plan, and have had a briefing with City staff, but can not publish the draft plan yet
- The plan focuses on all types of active mobility
- Recognition that cycling projects have a significant walking component
- 2030 Target: $\frac{2}{3}$ of all trips made by walk/bike/transit. We need to double the historic rate of growth in AT mode share

Consultations – Active Mobility Plan

- Staff explicitly considered:
 - Routes that were not completed from the previous 5 year plan (42% were completed)
 - Translink MBN (funding considerations)
 - Access to retail destinations
 - Equity considerations (30% in low served areas)
 - CEAP mode shift targets, and the resulting increases in lane km needed
 - For 2030, target 80+km of new or upgraded infrastructure, with >40% of projects to be high impact

Consultations – Active Mobility Plan

- Route Utility Score (weighted criteria)
 - Destinations (population, retail, jobs, parks, schools, other key destinations)
 - Network Value (spacing, directness, regional connectivity, dangling nodes, cycling demand)
 - Comfort and Attractiveness
 - Equity (spatial and demographic)
- Level of Improvement (considers crashes)
- Overall Impact (a function of the above)

Consultations – Active Mobility Plan

Greenways under consideration:

- Adanac through to Boundary
- Alberta (37th to 45th)
- Arbutus Greenway connections (north end)
- BC Parkway
- CVG
- Eastside Crosscut (Hastings to CVG)
- Hawkes
- Heather
- Hudson (37th to 67th)
- Kent (Boundary to Heather)
- Kits Park (on street)
- Masumi Mitsui (Earles to Boundary)
- Ontario (through to Kent)
- Ridgeway (Larch to Ontario)
- Skeena/Kerr/McHardy (22nd to 49th)
- Waterfront (Main to Coal Harbour)
- 5th, 10th, 14th, 15th, 18th/19th, 45th (specific sections)

Consultations – Active Mobility Plan

Complete Streets under consideration:

- Burrard (Drake to Robson)
- Cambie
- Cordova (Burrard to Water)
- Drake
- Granville Connector (Drake to Broadway)
- King Edward (Heather to Yukon)
- Melville
- Pacific Blvd and Expo Blvd (Richards to Carrall)
- St Paul's Hospital streets
- 1st Ave (Ontario to Ash)
- 41st (Hudson to Alberta)
- 49th (Hudson to Cambie)

Consultations – Active Mobility Plan

Major Pedestrian/Public Realm Improvements:

- Commercial Drive (Charles to 10th)
- Davie (Denman to Burrard)
- Denman (Davie to Robson)
- Granville (downtown, and 4th to 16th)
- Main (7th to 22nd)
- Robson (Denman to Burrard)
- Water St
- 4th Ave (Pine to MacDonald)

Consultations – Active Mobility Plan

- Staff developed a scoring system, and shared how they prioritized these candidate routes
- They are planning on a significant increase in the rate of Active Mobility infrastructure construction
- Council will determine the final plan and level of investment
- Two specific items that we provided suggestions on were:
 - Hastings St near Broughton over Melville
 - Connecting the AG to Kent Ave

Consultations – School Streets

- A School Street is a car free block beside a school open to walking, biking, and rolling
- 7 schools are participating in the program now
- Volunteers set up barricades during pick up and drop off times (difficult to maintain)
- The Comox Year Round School Street is proposed for fall 2023, after two years of a pilot program
 - 95% of students/75% of parents feel safer
 - 42% of families report walking more
 - 24% of families report cycling more
 - 98% of students want it to continue
 - Street would remain accessible for emergency vehicles
 - There are no driveways in this block of Comox

Consultations – School Streets



Consultations – Adanac Overpass

- Traffic Calming is being proposed along the Adanac Bike Route
- A survey is available until April 28th
- Online workshops are scheduled in April
- More information is available at <https://www.shapeyourcity.ca/adanac-overpass>

Consultations – Granville Connector Progress - Removal of the North Loops

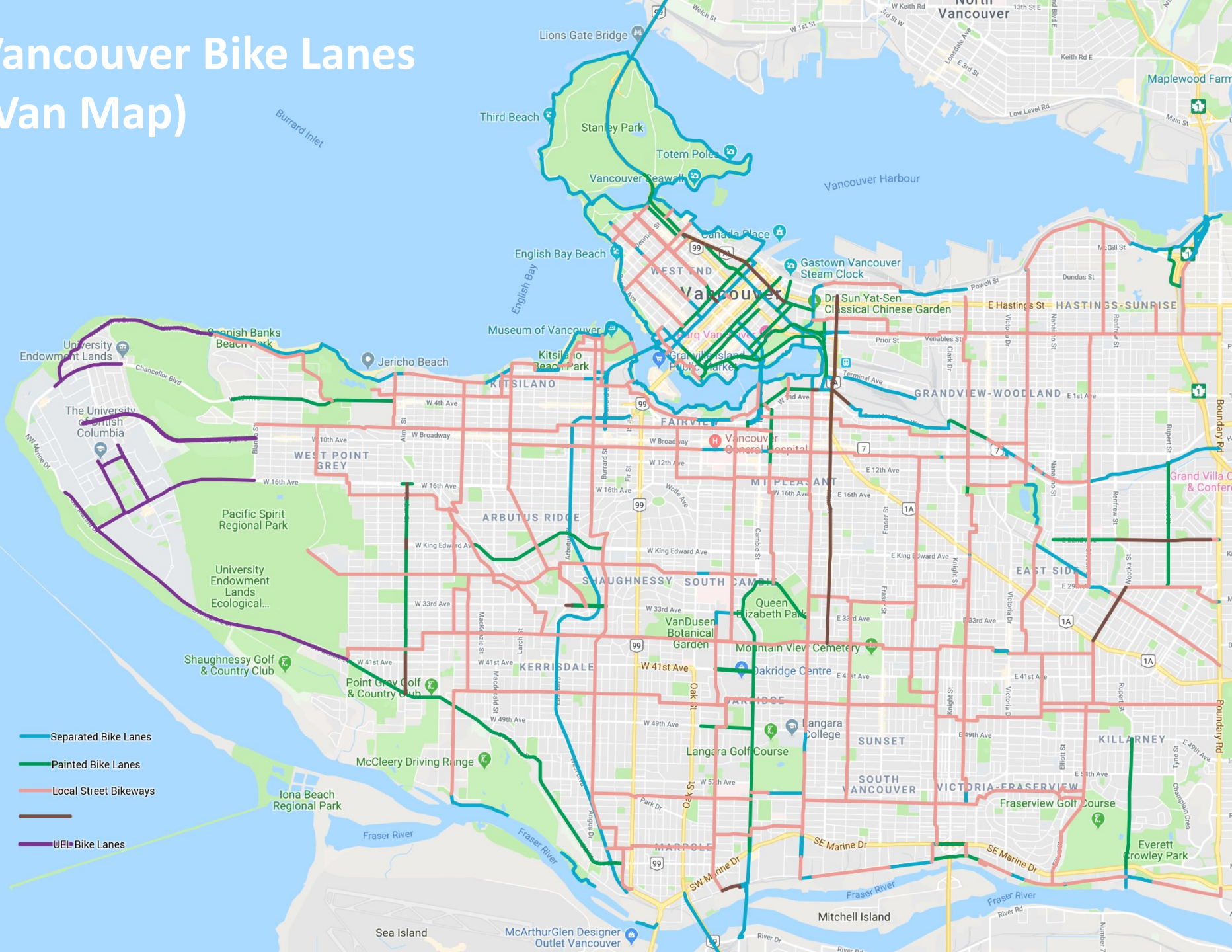


Breakout Rooms

- We have set up several Breakout Rooms so that our working groups can continue with smaller group discussions.
- Each will have a moderator/leader. The rooms will be open for 30 minutes.
- Please select which one you would like to go to
 - Cycling in Parks (Lisa)
 - General Discussion (Jeff)

Appendices

Vancouver Bike Lanes (Van Map)

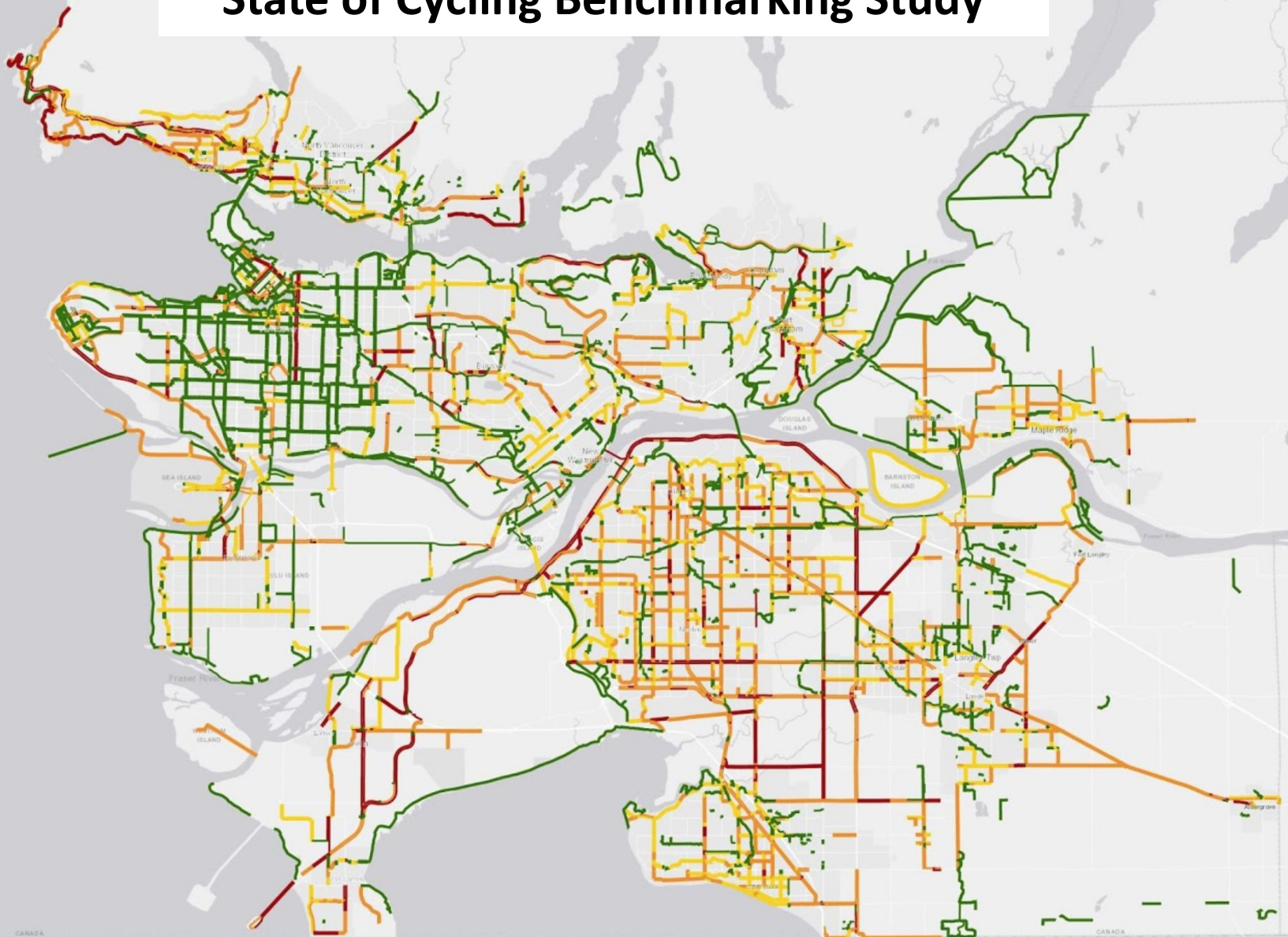


This is a detailed map of Vancouver, British Columbia, Canada. The map shows the city's layout, including major roads, parks, and landmarks. Key features include:

- Geography:** The Burrard Inlet to the north, the Fraser River to the south, and the city's grid system.
- Neighborhoods:** Various neighborhoods are labeled, including Stanley Park, Kitsilano, Fairview, West Point Grey, Arbutus Ridge, West Side, Oakridge, and South Vancouver.
- Landmarks:** Major landmarks like Stanley Park, Vancouver Island, and the University of British Columbia are visible.
- Infrastructure:** The map shows the city's grid system, major roads, and public transit routes.
- Surrounding Areas:** The map also shows the surrounding areas of Lower Lonsdale, Park & Tilford Gardens, and the Fraser River.

Regional Bikeway Map

State of Cycling Benchmarking Study



CoV Cycling Network Improvement Budget

5-Year Cycling Network: Additions & Upgrades

2018-2022 Added Nov 2017

| Planned Routes | |
|------------------|------------------------|
| 1 | Park Lane* |
| 2 | Bute |
| 3 | Drake |
| 4 | Smitha |
| 5 | Nelson |
| 6 | West Waterfront Road** |
| 7 | Water-Alexander-Powell |
| 8 | Granville Bridge |
| 9 | Gore |
| 10 | Hudson |
| 11 | Kent |
| 12 | Commercial |
| 13 | Banca |
| 14 | 14th Ave |
| 15 | St. George Rainway |
| 16 | Duchess-Wales* |
| 17 | Helmscken |
| 18 | King Edward |
| 19 | Pandora-Semlin |
| 20 | Prince Edward |
| 21 | Quebec |
| 22 | Cambie |
| 23 | Stainsbury |
| Planned Upgrades | |
| A | Smitha |
| B | Nelson |
| C | Cambie Bridge |
| D | Highbury |
| E | Cypress |
| F | 5th Ave |
| G | Ontario |
| H | Adanac |
| I | BC Parkway |
| J | 10th Ave |
| K | Richards |
| L | Cambie |
| M | Georgia |
| N | 1st Ave |
| O | Kent |

* Park Board jurisdiction
 ** Port Authority jurisdiction
 Number/Letter sequence does not imply priority

- Planned Route
- - - Planned Upgrade
- AAA Network
- Protected Bike Lane
- Local Street Bikeway
- - - Painted Bike Lane
- - - Shared Use Lane

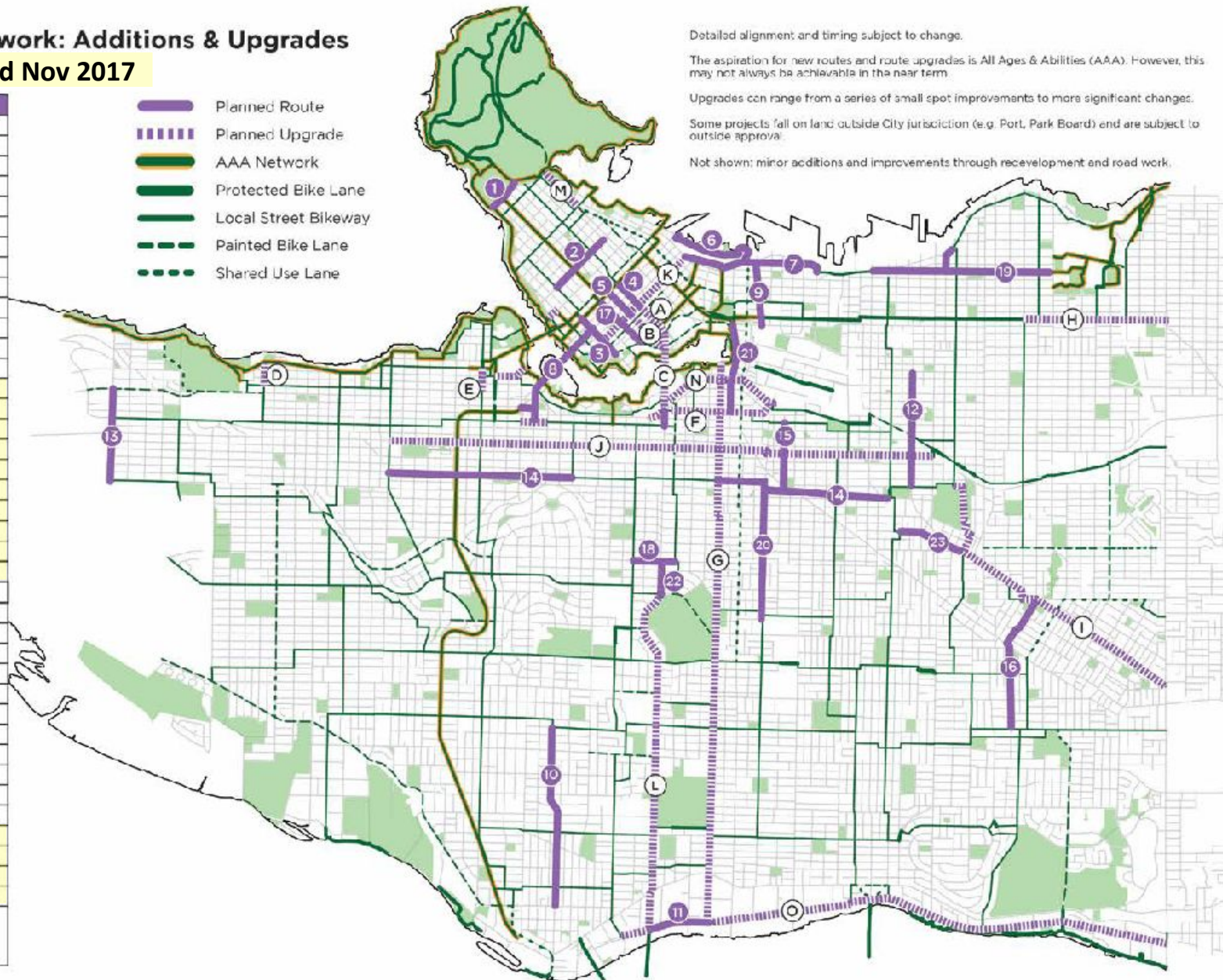
Detailed alignment and timing subject to change.

The aspiration for new routes and route upgrades is All Ages & Abilities (AAA). However, this may not always be achievable in the near term.

Upgrades can range from a series of small spot improvements to more significant changes.

Some projects fall on land outside City jurisdiction (e.g. Port, Park Board) and are subject to outside approval.

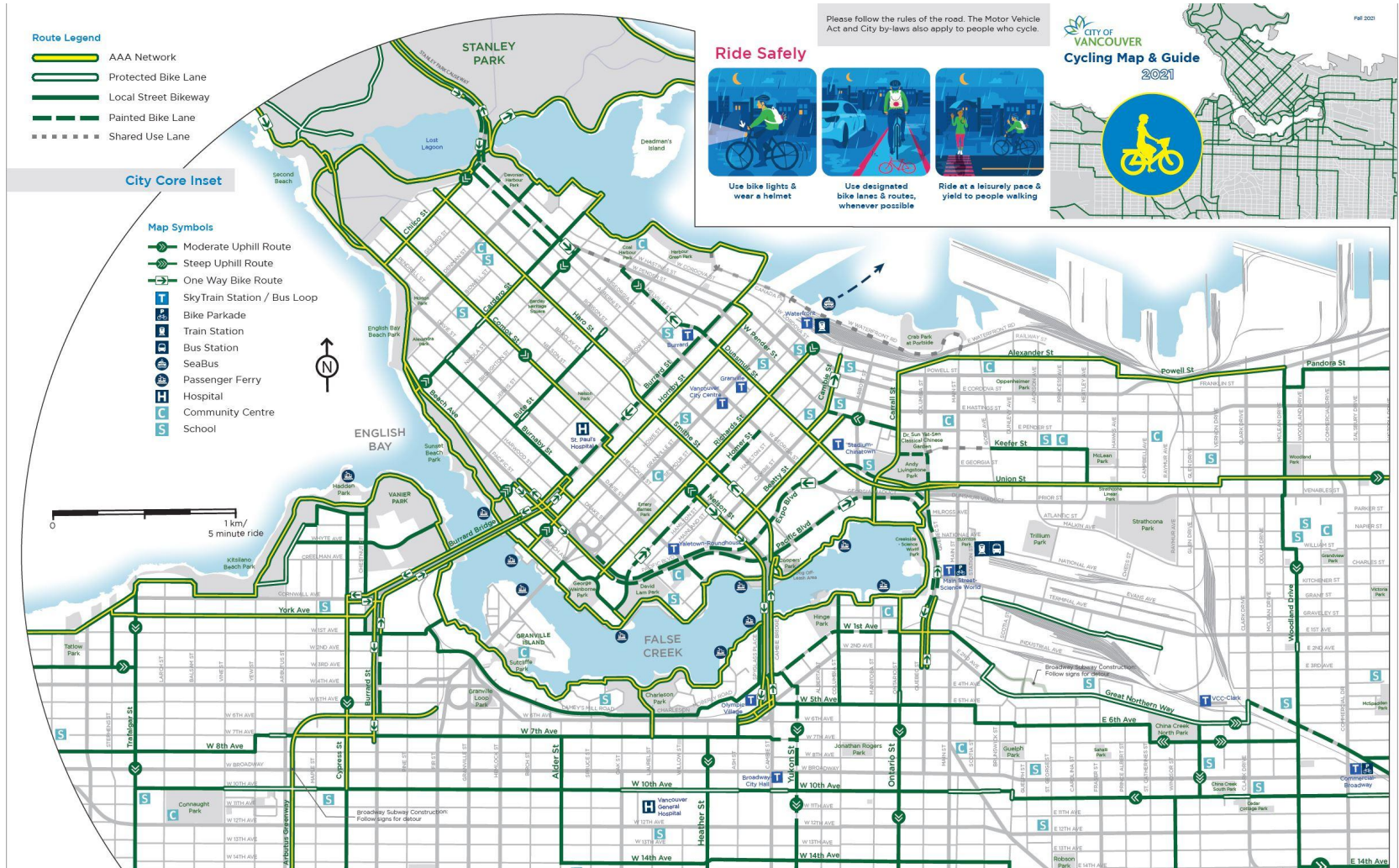
Not shown: minor additions and improvements through redevelopment and road work.



CoV Cycling Map – Fall 2021 Update



CoV Cycling Map – Fall 2021 Update



Mobi by Shaw Go is Vancouver's public bike share system

- Users can unlock a bike at any station, ride, and return it to any station
- Users can take an unlimited number of trips during their membership period
- Most of the stations have free Wi-Fi

For more info and current station locations:

- Visit www.mobibikes.ca
- Download the "Mobi by Shaw Go" App
- Call 778-655-1800

Check out the Mobi Station Zone on the Main Map. The boundary contains all public bike share stations, including Downtown and Stanley Park.



mobi | Shaw)Go

Walk + Bike + Roll: Getting Around the Vancouver Way



By walking, cycling, rolling, and taking transit more often, you can:

- Improve your personal health
- Improve the health of your environment
- Alleviate congestion on our streets

vancouver.ca/walkbikeroll

For More Information from the City of Vancouver

Phone/TTY: 3-1-1/7-1-1

Web: vancouver.ca/cycling

Bike network inquiries & small upgrade projects: bikeupgrades@vancouver.ca

Report garbage, graffiti, and much more with the City's VanConnect app: vancouver.ca/vanconnect

Micro Mobility: Where can I ride?

| | Major Road | Local Road | Protected Bike Lane or Pathway | Sidewalk |
|------------------|------------|------------|--------------------------------|----------|
| Bicycle | ✓ | ✓ | ✓ | ✗ |
| E-Bike* | ✓ | ✓ | ✓ | ✗ |
| Moped | ✓ | ✓ | ✗ | ✗ |
| Skateboard | ✗ | ✗ | ✗ | ✗ |
| Push Scooter | ✗ | ✓ | ✓ | ✗ |
| Rollerblades | ✗ | ✗ | ✗ | ✗ |
| E-Scooter* | ✗ | ✗ | ✗ | ✗ |
| Mobility Scooter | ✗ | ✗ | ✗ | ✓ |
| Hoverboard** | ✗ | ✗ | ✗ | ✗ |
| E-Skateboard** | ✗ | ✗ | ✗ | ✗ |

*Not free except for motorized wheelchairs. Vancouver bylaws prohibit the use of motorized devices (e-bikes and e-scooters) on the seawall.
**Currently hoverboards and e-skateboards may not be operated on roads or sidewalks as per the BC Motor Vehicle Act.

Register your Bike to Reduce Theft

It's free and takes only 5 minutes. In the event your bike goes missing, you can activate the police and community to help recover your bike.

Always report a missing bike with police. Better reporting means more returned bikes and helps law enforcement to prioritize their efforts.



www.projects29.com

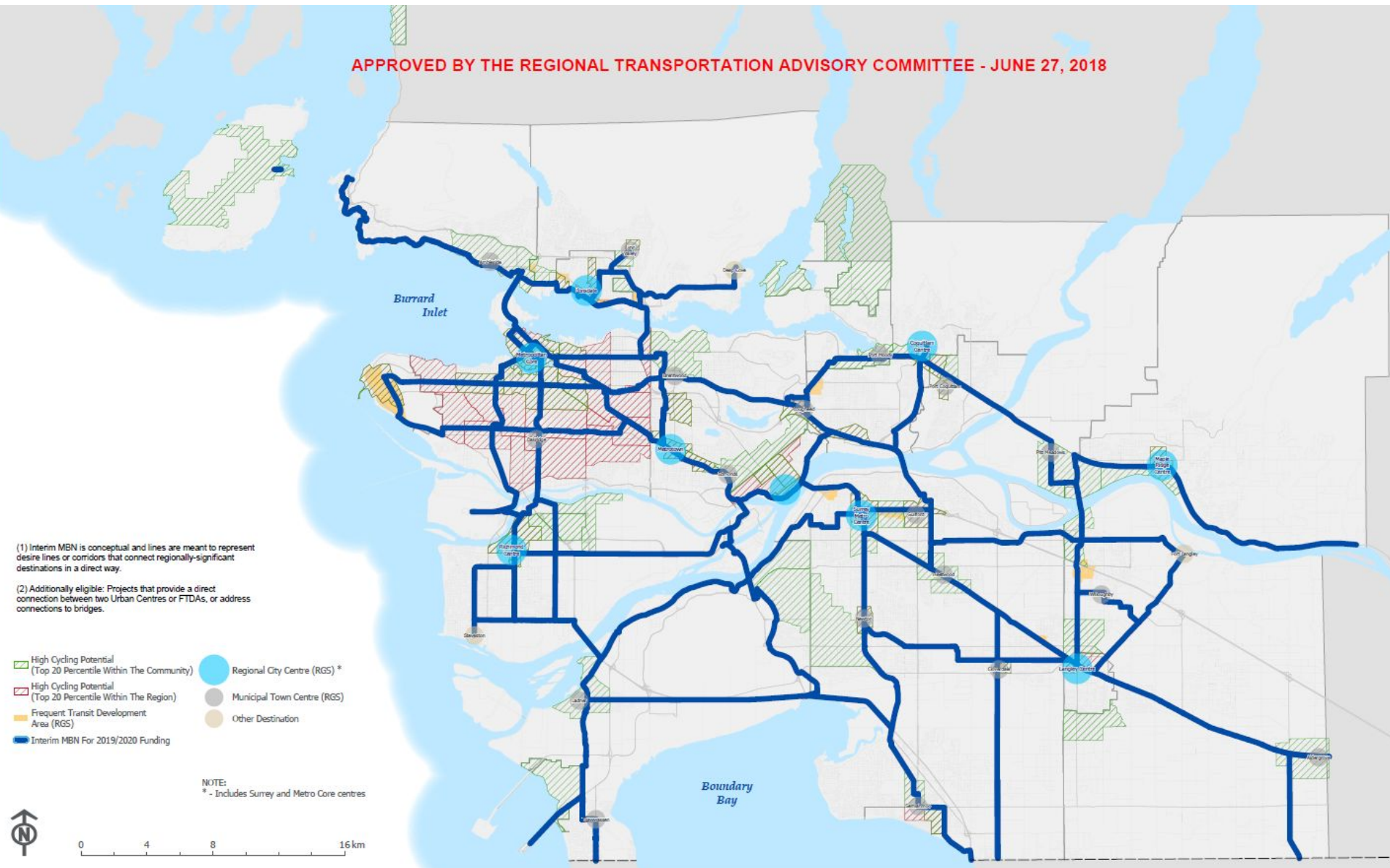
Bikes on Transit

Public transit can help you and your bike go further. You can take your bike on the bus, SkyTrain, SeaBus, and WestCoast Express. Electric and folding bikes are also allowed on the system now (with some restrictions).

Bike Parkades are indoor facilities for registered Compass customers and are available in Vancouver at Main Street-Science World, King Edward, Commercial-Broadway, and Joyce-Collingwood.

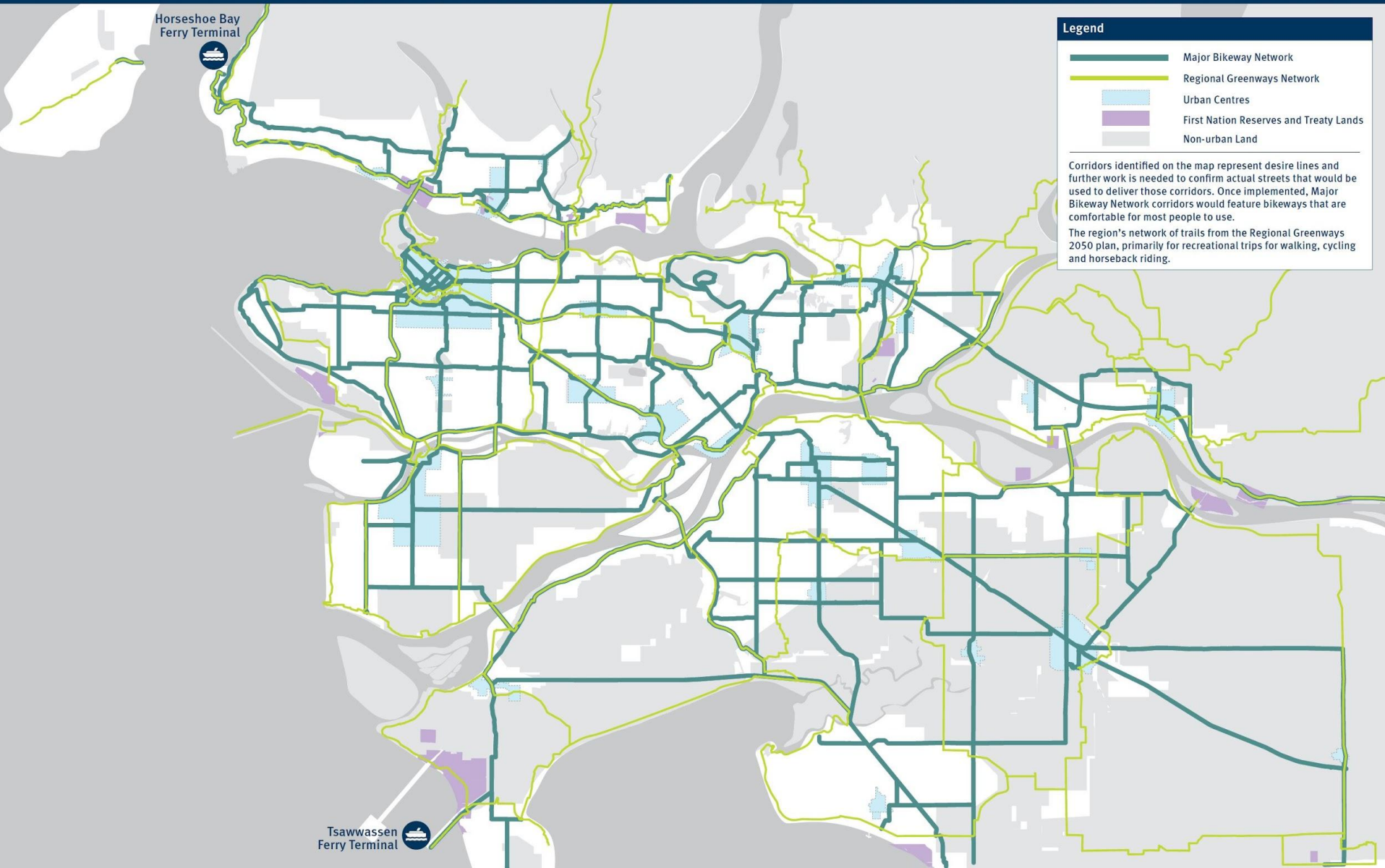
For more information visit www.translink.ca

Translink Major Bikeway Network (MBN)



Translink Major Bikeway Network October 2021

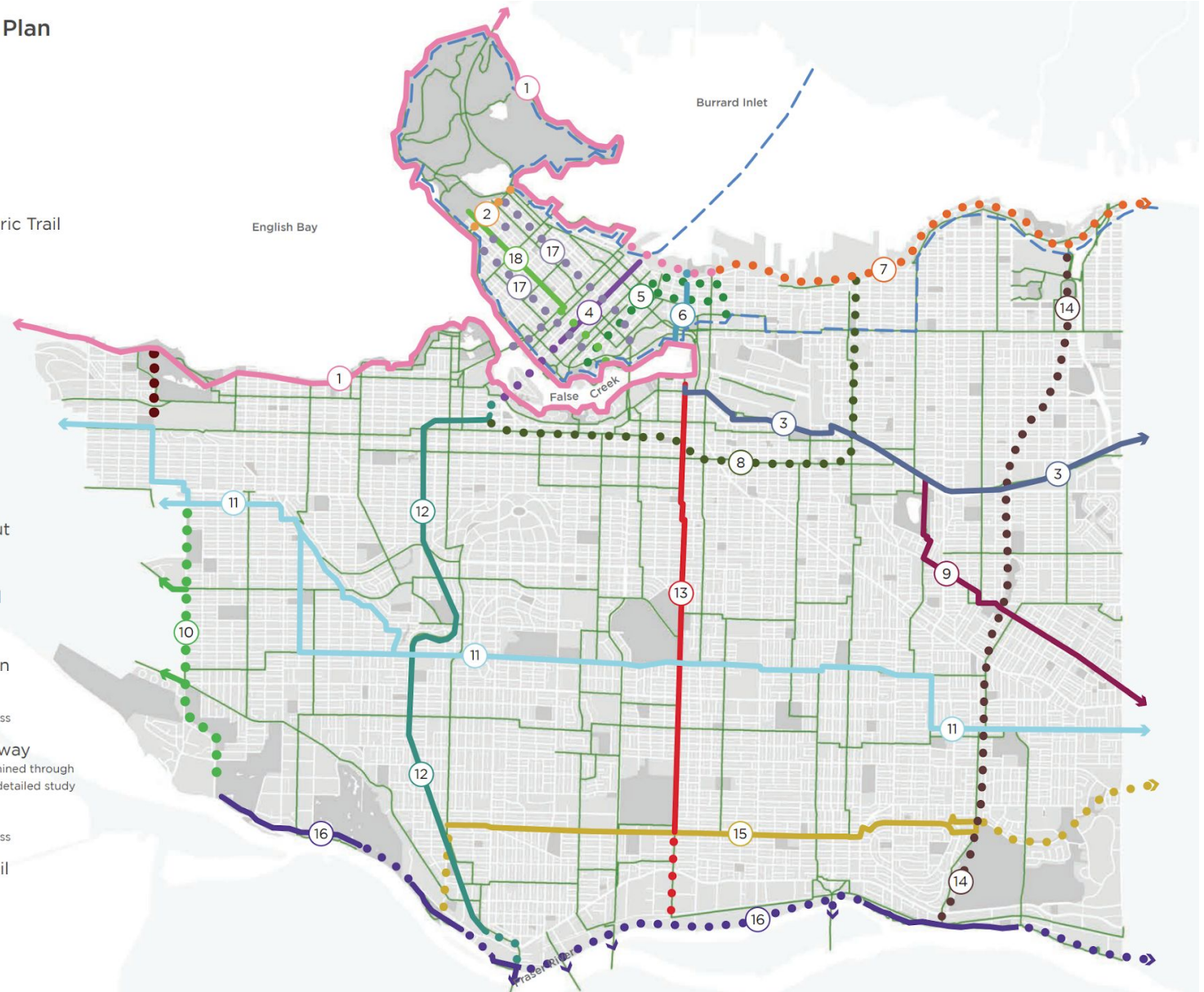
Transport 2050 Regional Cycling Network



Vancouver Greenways Plan

City Greenways Plan

- 1 Seaside
 - 2 Lagoon
 - 3 Central Valley
 - 4 Granville
 - 5 Downtown Historic Trail
 - 6 Carrall
 - 7 Portside
 - 8 Midtown Way
 - 9 Parkway
 - 10 Spirit Trail
 - 11 Ridgeway
 - 12 Arbutus
 - 13 Ontario
 - 14 Eastside Crosscut
 - 15 Masumi Mitsui
 - 16 Fraser River Trail
 - 17 City Centre
 - 18 Comox-Helmcken
- Greenway
Constructed or in progress
- Proposed Greenway
Exact route to be determined through
public consultation and detailed study
- Bikeway
Constructed or in progress
- TransCanada Trail



Metro Vancouver Greenway Plan

